

**STATIC SENSITIVE DEVICES**  
USE A GROUND STRAP  
WHEN SERVICING

# WIRING INSTRUCTIONS

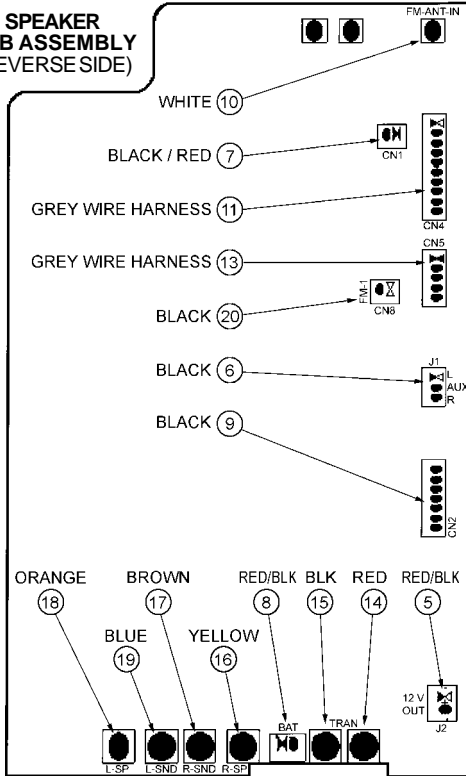
## JOB SITE RADIO

MILWAUKEE ELECTRIC TOOL CORP. 13135 WEST LISBON RD. BROOKFIELD, WIS.

DATE  
Oct. 2002

**BULLETIN**  
**58-01-0161**

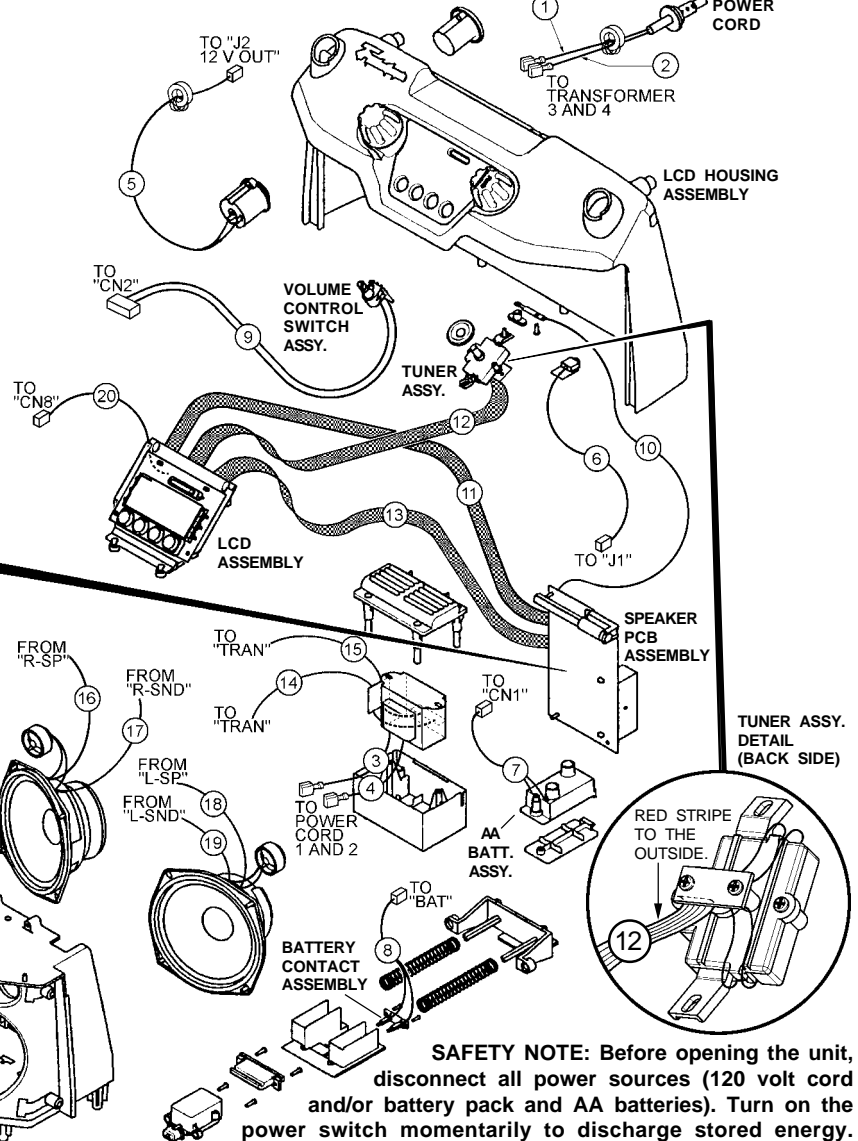
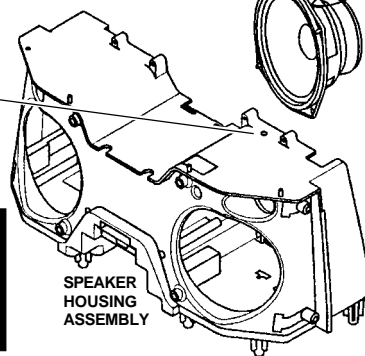
### SPEAKER PCB ASSEMBLY (REVERSE SIDE)



RED AND BLACK WIRES FROM THE TWEETERS, 23-45-2100, ARE TO BE SOLDERED TO THE 5-1/2" SPEAKERS, NO. 23-45-2000.

ROUTE WIRE #10 THROUGH THE HOLE IN THE SPEAKER HOUSING ASSEMBLY BEFORE PLACEMENT INTO THE LCD HOUSING ASSEMBLY.

**AS AN AID TO REASSEMBLY,  
TAKE NOTE OF WIRE  
ROUTING AND POSITION  
IN WIRE GUIDES AND TRAPS  
WHILE DISMANTLING RADIO.**



**SAFETY NOTE:** Before opening the unit, disconnect all power sources (120 volt cord and/or battery pack and AA batteries). Turn on the power switch momentarily to discharge stored energy.

### WIRING SPECIFICATIONS

Wire No.	Wire Color	Origin or Gauge	Length	Terminals, Connectors and 1 or 2 End Wire Preparation
1	Black	22-64-0980	----	Component of cord set.
2	White	22-64-0980	----	Component of cord set.
3	Red	23-81-0545	----	Component of the transformer assembly.
4	Red	23-81-0545	----	Component of the transformer assembly.
5	Red/Blk	45-34-0151	----	Component of the 12 volt socket assembly.
6	Black	45-34-0160	----	Component of the auxiliary socket assembly.
7	Red/Blk	31-50-1195	----	Component of the AA battery assembly.
8	Red/Blk	22-09-1651	----	Component of the battery contact assembly.
9	Black	23-66-0740	----	Component of the volume control switch assembly.
10	White	22-09-1545	----	Component of the speaker PCB assembly. Soldered to "FM-ANT-IN".
11	Grey	22-09-1575	----	Component of the PCB on the LCD assembly.
12	Grey	42-42-0500	----	Component of the PCB on the tuner assembly.
13	Grey	22-09-1575	----	Component of the PCB on the LCD assembly.
14	Red	23-81-0545	----	Component of the transformer assembly. Soldered to the "+" on the PCB.
15	Black	23-81-0545	----	Component of the transformer assembly. Soldered to the "-" on the PCB.
16	Yellow	22-09-1546	----	Component of the speaker PCB assembly. Soldered to the "R-SP".
17	Brown	22-09-1546	----	Component of the speaker PCB assembly. Soldered to the "R-SND".
18	Orange	22-09-1546	----	Component of the speaker PCB assembly. Soldered to the "L-SP".
19	Blue	22-09-1546	----	Component of the speaker PCB assembly. Soldered to the "L-SND".
20	Black	22-09-1575	----	Component of the PCB on the LCD assembly. Solder to the "FM-I SGND".