

WIRING INSTRUCTIONS

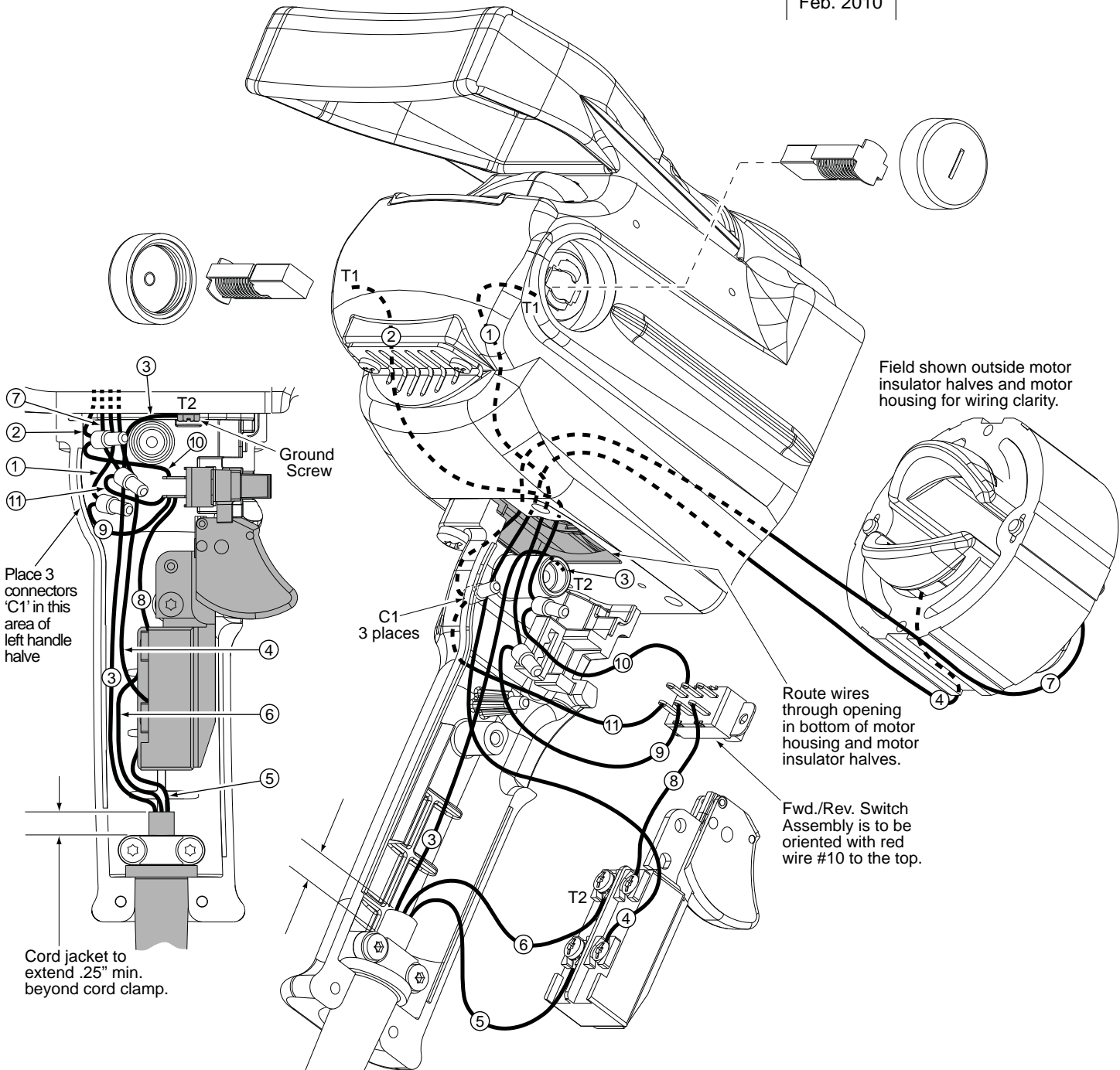
TITLE

1/2" COMPACT DRILL

MILWAUKEE ELECTRIC TOOL CORP. 13135 WEST LISBON RD. BROOKFIELD, WIS.

DATE
Feb. 2010

BULLETIN
58-01-0541



WIRING SPECIFICATIONS

Wire No.	Wire Color	Origin or Part No.	Gauge	Length	Terminals, Connectors and End Wire Preparation
1	White	23-94-6216	----	----	Strip .18" for T1, connect to right brush. Strip .5" and tin, connect to #9 with C1.
2	Red	23-94-6221	----	----	Strip .18" for T1, connect to left brush. Strip .5" and tin, connect to #10 with C1.
3	Green	22-64-1231	----	----	Component of cord set. Strip .18" for T2. Ground to motor hsg. with screw.
4	Black	18-50-0063	----	----	Component of field. Strip .18" for T2. Connect to '2A' on switch.
5	White	22-64-1231	----	----	Component of cord set. Strip .18" for T2. Connect to '2B' on switch.
6	Black	22-64-1231	----	----	Component of cord set. Strip .18" for T2. Connect to '1B' on switch.
7	Yellow	18-50-0063	----	----	Component of field. Strip .5" and tin, connect to #11 with C1.
8	Black	23-66-2517	----	----	Component of fwd./rev. switch. Strip .18" for T1. Connect to '1A' on switch.
9	White	23-66-2517	----	----	Component of fwd./rev. switch. Strip .5" and tin, connect to #1 with C1.
10	Red	23-66-2517	----	----	Component of fwd./rev. switch. Strip .5" and tin, connect to #2 with C1.
11	Yellow	23-66-2517	----	----	Component of fwd./rev. switch. Strip .5" and tin, connect to #7 with C1.

NOTE:

All leads must be held to $\pm 1/8"$.
All lead lengths are before stripping.

TERMINAL DESCRIPTION

Code	Part No.	Qty.
T1	23-74-0750	2
T2	23-74-0850	5

CONNECTOR DESCRIPTION

C1	22-56-0150	3
----	------------	---