

WIRING INSTRUCTIONS

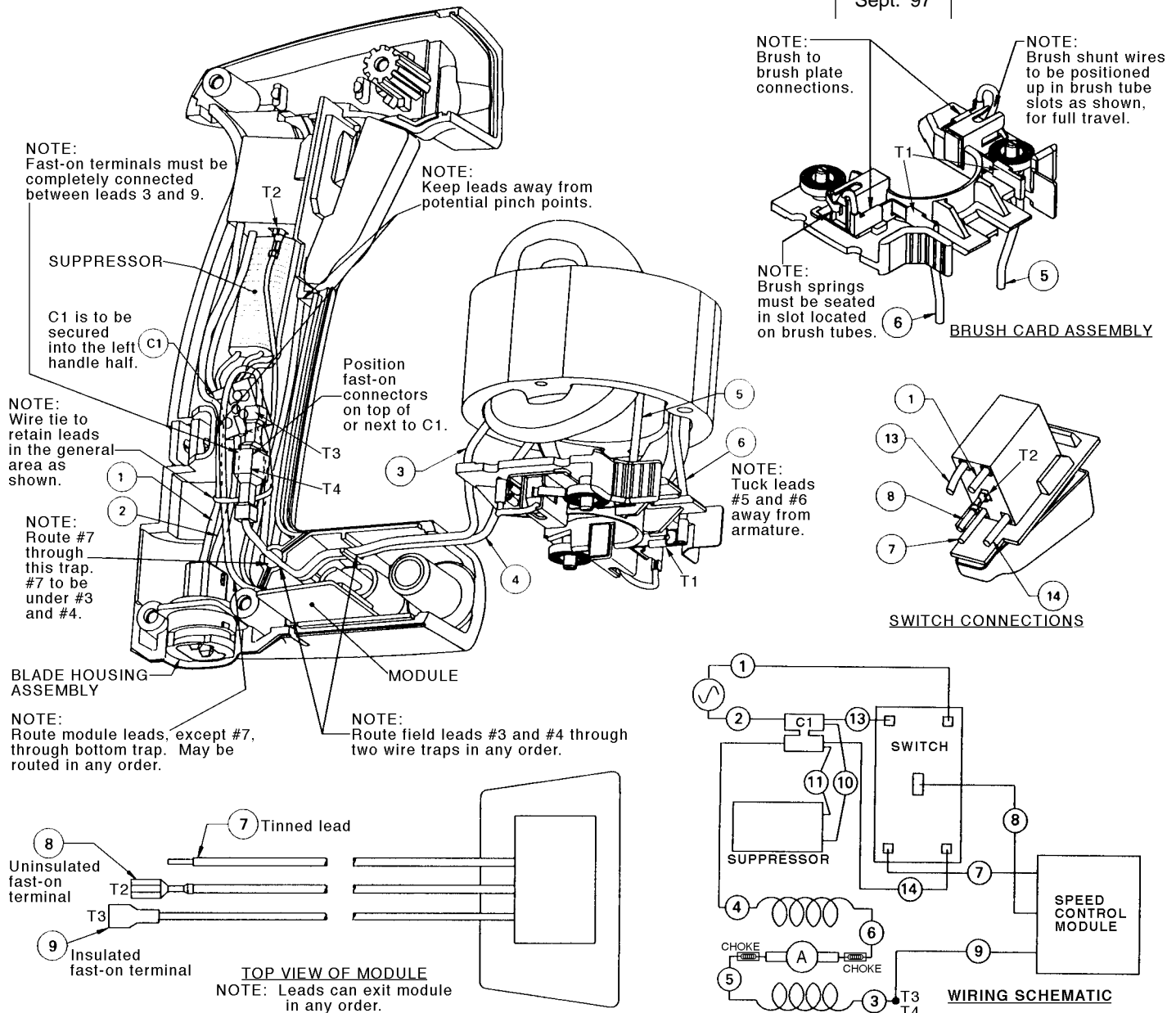
TITLE

THUNDERBOLT™ ROTARY HAMMERS

MILWAUKEE ELECTRIC TOOL CORP. 13135 WEST LISBON RD. BROOKFIELD, WIS.

DATE
Sept. '97

BULLETIN
58-03-1770



WIRING SPECIFICATIONS

Wire No.	Wire Color	Origin or Part No.	Gauge	Length	Terminals, Connectors and End Wire Preparation
1	Blue	Blade Hsg.	16	5.5"	Component of blade housing assembly.
2	Brown	Blade Hsg.	16	2.5"	Component of blade housing assembly.
3	Red	Field	16	7"	Strip .20" for T4.
4	Red	Field	16	7"	Strip .25" and tin for C1.
5	Yellow	Field	16	1.75"	Strip .18" for T1.
6	Black	Field	16	1.75"	Strip .18" for T1.
7	Black	Module	18	6"	Strip .25" and tin.
8	Black	Module	18	6"	Strip .16" for T2.
9	Blue	Module	18	6.37"	Strip .20" for T3.
10	Black	Suppressor	----	1"	Strip .25" for C1.
11	Black	Suppressor	----	1"	Strip .25" for C1.
13	Black	23-94-6645	18	3.75"	Strip .375" and tin for switch / Strip .25" for C1.
14	Red	23-94-6635	18	3.75"	Strip .375" and tin for switch / Strip .25" for C1.

BULK LEAD WIRE - BULLETIN 58-01-0003

NOTE:
All leads must be held to $\pm 1/8"$.
All lead lengths are before stripping.

TERMINAL DESCRIPTION

Code	Part No.	Qty.
T1	23-74-0750	2
T2	23-74-1060	1
T3	23-74-0440	1
T4	23-74-0970	1

CONNECTOR DESCRIPTION

Code	Part No.	Qty.
C1	22-56-0451	1