



## SERVICE PARTS LIST

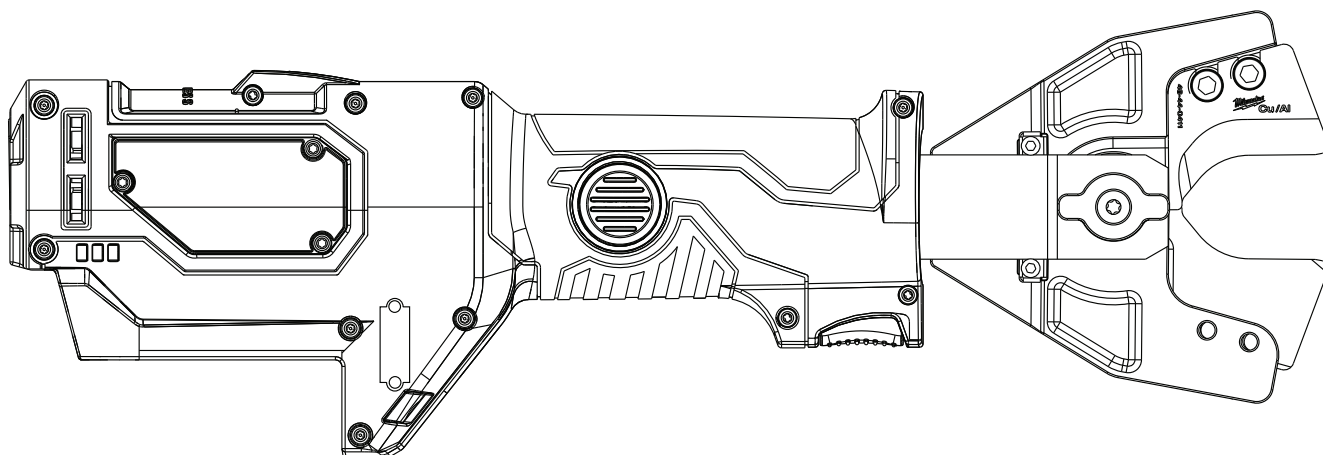
BULLETIN NO.  
54-00-2672

SPECIFY CATALOG NO. AND SERIAL NO. WHEN ORDERING PARTS			REVISED BULLETIN	DATE
M18™ FORCELOGIC™ 6T Cable Cutter				Jan. 2020
CATALOG NUMBER	2672-20	SERIAL NUMBER	G67(A thru C)	
WIRING INSTRUCTION				

CUTTER HEAD SERVICE PARTS PAGE 2-4

LUBRICATION INSTRUCTIONS PAGE 5

ACCESSORIES PAGE 2-4



**Due to the combination of hydraulics and electronics in this tool,  
service can only be performed at Milwaukee Authorized Hydraulic Repair Centers:**

### MILWAUKEE TOOL Central Repair

1401 Sycamore Avenue • Greenwood, MS 38930-7277

Please send your tool directly to this location for service.

Or

**Via e-Service at: [www.milwaukeetool.com/e-service](http://www.milwaukeetool.com/e-service)**  
questions, please call 1.800.SAWDUST (1.800.729.3878)

Or

Visit [www.milwaukeetool.com](http://www.milwaukeetool.com) to find your closest  
Milwaukee authorized Hydraulic repair center

Or

Return it to a MILWAUKEE *factory* Service Center location, freight prepaid and insured.  
A copy of the proof of purchase should be included with the return product.

---

If you have questions please contact Milwaukee Product Service at:

**Product Technical Support via phone at: 262.783.8642**

Or

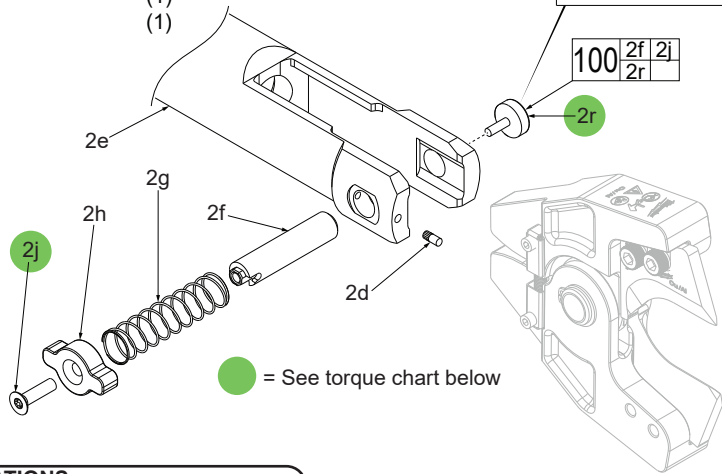
**Via email at: [METProductSupport@milwaukeetool.com](mailto:METProductSupport@milwaukeetool.com)**

**Disassembly is not recommended and could void the warranty.**

Accessories and External Service Parts for 2672-20 6T Cable Cutter

FIG.	PART NO.	DESCRIPTION OF PART	NO. REQ.
2d	-----	Half Knurled Pin	(1)
2e	-----	Clevis	(1)
2f	44-60-0042	Lock Pin	(1)
2g	40-50-0036	Lock Pin Spring	(1)
2h	31-12-0018	Lock Pin Cap	(1)
2j	06-82-0050	Clevis Pin Cap Screw T-25	(1)
2r	06-87-0010	Knurled Thumb Screw	(1)
32	12-20-0044	Service Nameplate (Not Shown)	(1)
40	42-55-0150	Carrying Case (Not Shown)	(1)
	48-22-8278	Bucket Bag, Accessory For 2672-21S (Not Shown)	(1)
41	42-70-0027	Carabiner (Not Shown)	(1)
42	49-96-0012	Hex Key (Not Shown)	(1)
100	44-60-0043	Clevis Pin Upgrade Kit	(1)

**NOTE:**  
Early design of this tool did not have the Knurled Thumb Screw (2r). The Lock Pin (2f) did not have threads on that corresponding end. **Order the Clevis Pin Upgrade Kit (100) 44-60-0043.**



**NOTE:**  
See page 3 for the servicing of Cu/Al Jaw Assembly 49-16-2772 and ACSR Jaw Assembly 49-16-2773.

See page 4 for the servicing of EHS Guy Wire Jaw Assembly 49-16-2777 and Fine Strand Cutting Jaw Assembly 49-16-2778.

TORQUE SPECIFICATIONS				
FIG.	PART NO.	PART or WHERE USED	SEAT TORQUE	
			(KG/CM)	(IN/LBS)
2j	06-82-0050	Screw, Lock Pin Cap	80±3	69±2
2r	06-87-0010	Knurled Thumb Screw	4±1	3.5

FIG.	PART NO.	DESCRIPTION OF PART	NO. REQ.
1	49-16-2772	Jaw Assembly with Cu/Al Jaws	(1)
1a	-----	Cu/Al Cutter Jaw	(2)
1b	48-44-0411	Cu/Al Replacement Blade (Set)	(1)
1c	05-74-0018	M6 x 1.0 x 14mm Blade Mount Screw	(4)
1d	44-86-0042	Retaining Ring	(2)
1e	-----	Spring Mounting Screw	(4)
1f	-----	Left Spring Cover	(2)
1g	-----	Right Spring Cover	(2)
1h	-----	Outer Spring	(2)
1j	-----	Hollow Pin	(1)
69	14-46-0018	Jaw Spring and Cover Service Kit	(1)

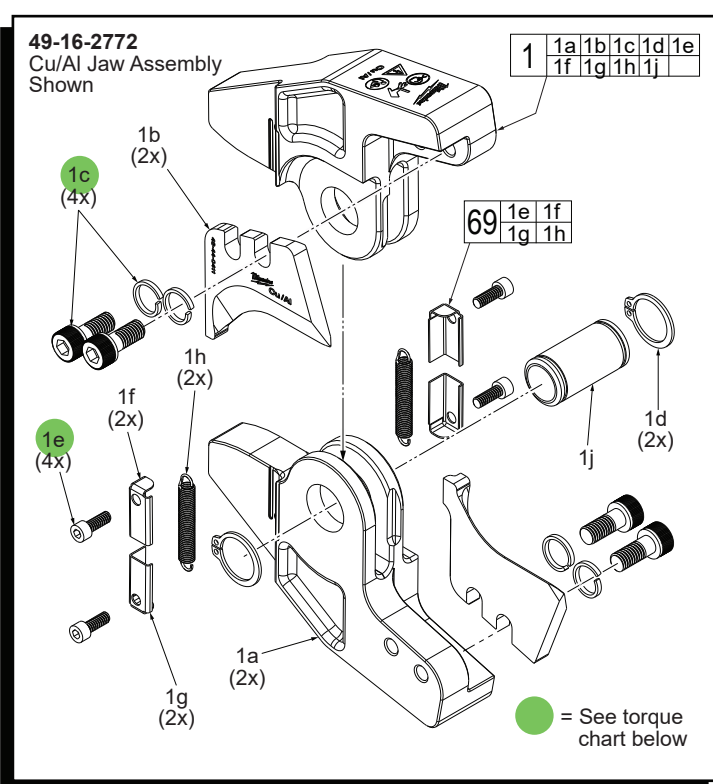
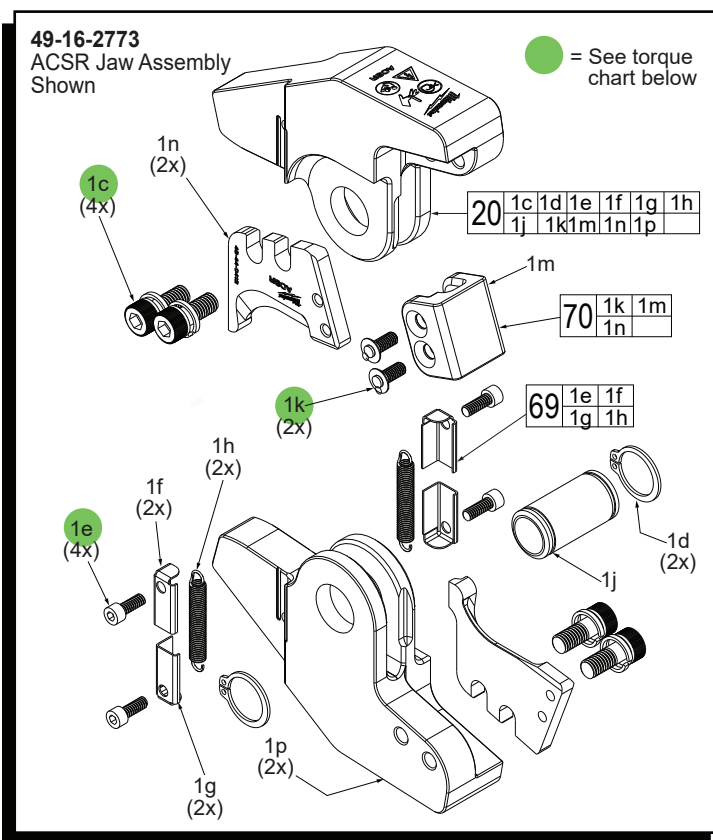


FIG.	PART NO.	DESCRIPTION OF PART	NO. REQ.
20	49-16-2773	Jaw Assembly with ACSR Jaws	(1)
1c	05-74-0018	M6 x 1.0 x 14mm Blade Mount Screw	(4)
1d	44-86-0042	Retaining Ring	(2)
1e	-----	Spring Mounting Screw	(4)
1f	-----	Left Spring Cover	(2)
1g	-----	Right Spring Cover	(2)
1h	-----	Outer Spring	(2)
1j	-----	Hollow Pin	(1)
1k	05-81-1050	Retainer Screw	(2)
1m	44-86-0053	Blade Retainer	(1)
1n	-----	ACSR Blade	(2)
1p	-----	ACSR Cutter Jaw	(2)
69	14-46-0018	Jaw Spring and Cover Service Kit	(1)
70	48-44-0412	ACSR Replacement Blade Kit	(1)



TORQUE SPECIFICATIONS			
FIG.	PART NO.	PART or WHERE USED	SEAT TORQUE (KG/CM)   (IN/LBS)
1c	05-74-0018	Screw, Blade	100±3   70±2
1e	-----	Screw, Jaw Spring Cover	3-5   3
1k	05-81-1050	Screw, Blade Retainer	35±3   30±2

See lubrication instructions on page 5 prior to installing and securing fasteners.

FIG.	PART NO.	DESCRIPTION OF PART	NO. REQ.
1	05-81-0132	M6 x 14mm Pan Hd. T-30 Mach. Screw	(2)
2	-----	Blade Retainer	(1)
3	-----	Guy Wire Jaw	(2)
4	44-86-0042	Retaining Ring	(2)
5	-----	Hollow Pin	(1)
6	-----	Guy Wire Blade	(2)
7	05-74-0001	M6 x 20mm Blade Mount Screw	(4)
8	-----	Spring Mounting Screw	(4)
9	-----	Left Spring Cover	(2)
10	-----	Right Spring Cover	(2)
11	-----	Outer Spring	(2)
69	14-46-0018	Jaw Spring and Cover Service Kit	(1)
70	48-44-2777	EHS Replacement Blade Kit	(1)
71	44-86-2777	Blade Retainer Kit	(1)

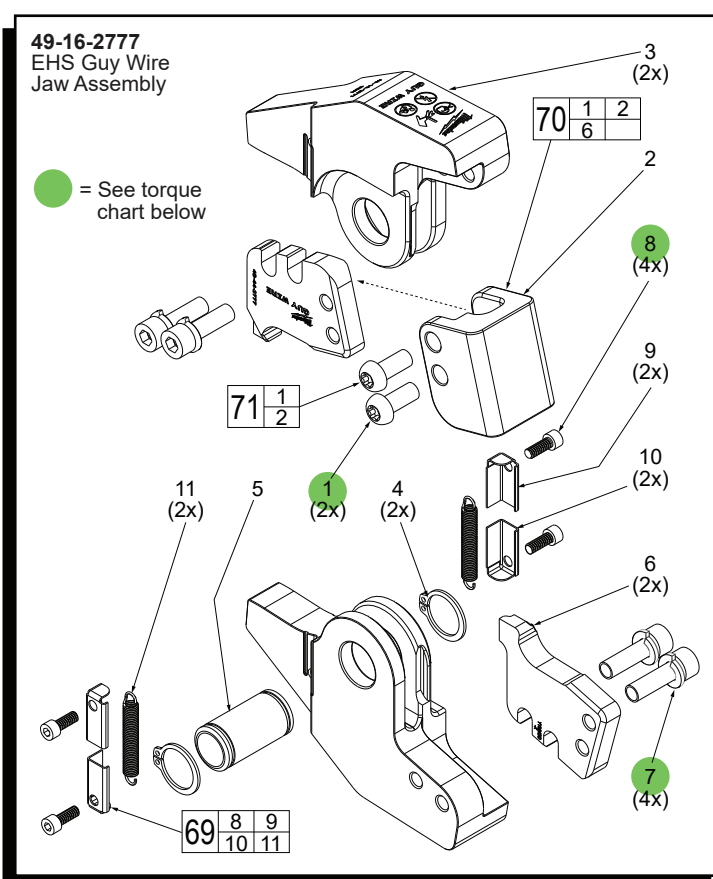
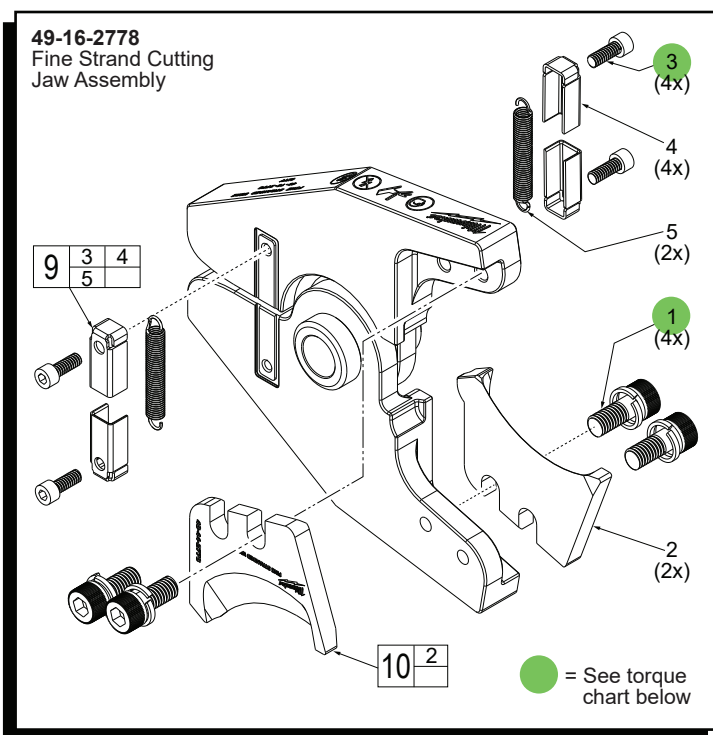


FIG.	PART NO.	DESCRIPTION OF PART	NO. REQ.
1	05-74-0018	M6 x 1.0 Fine Strand Blade Mount Screw	(4)
2	-----	Fine Strand Cutting Blade	(2)
3	-----	#6-32 UNC-3A Machine Screw	(4)
4	-----	Spring Cover	(4)
5	-----	Extension Spring	(2)
9	14-46-0111	Jaw Spring and Cover Service Kit	(1)
10	48-44-2778	Fine Strand Replacement Blade Kit	(1)



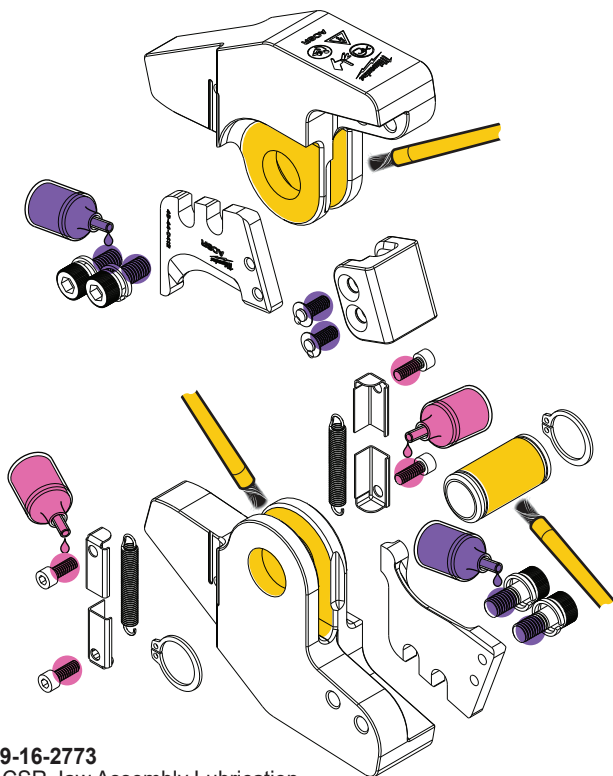
TORQUE SPECIFICATIONS			
FIG.	PART NO.	PART or WHERE USED	SEAT TORQUE (KG/CM) (IN/LBS)
For 49-16-2777:			
1	05-81-0132	Screw, Retainer	90±3 78±2
7	05-74-0001	Screw, Blade	110±3 95±2
8	-----	Screw, Spring Covers	3-4 2-3
For 49-16-2778:			
1	05-74-0018	Screw, Blade	100±3 87±2
3	-----	Screw, Spring Covers	3-5 2-4

See lubrication instructions on page 5 prior to installing and securing fasteners.

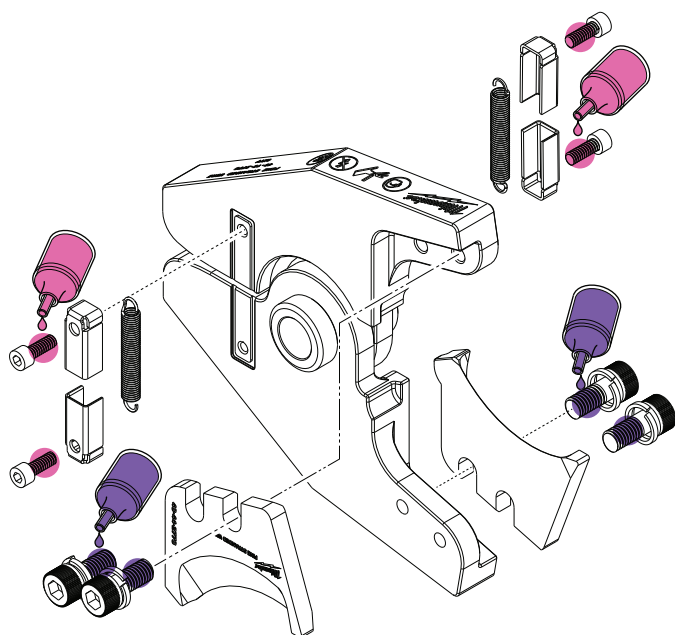
## LUBRICATION INSTRUCTIONS

### LUBRICATION:

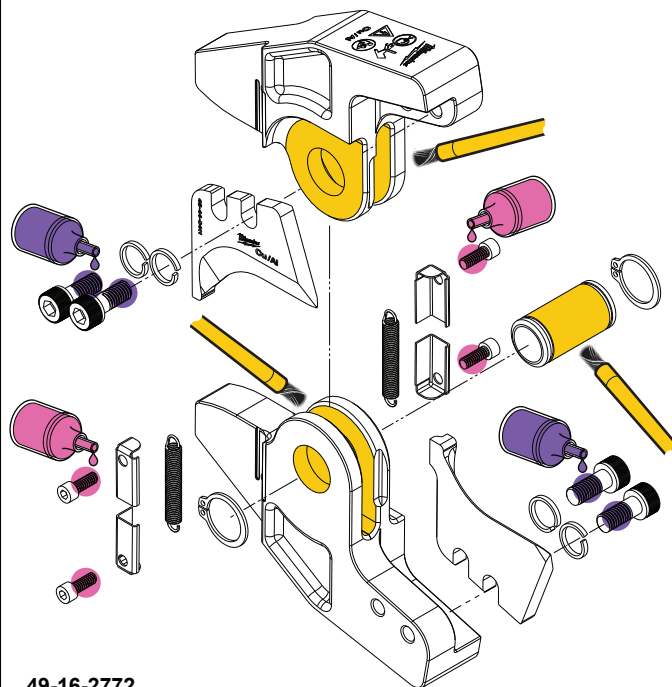
- = Type S2 Grease (7 oz. tube), 49-08-5265
- = 277 Red Loctite®, 44-22-0050
- = 243 Blue Loctite®, 44-22-0095



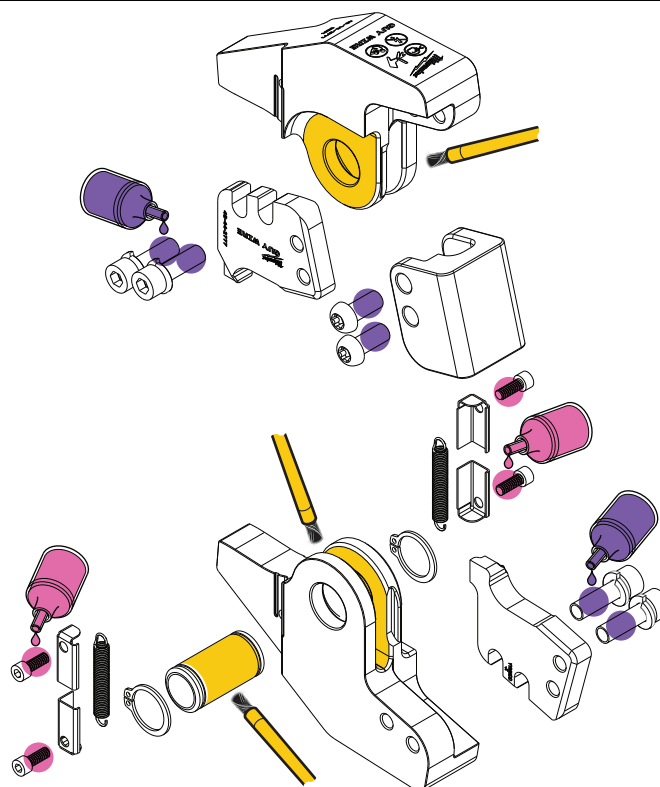
**49-16-2773**  
ACSR Jaw Assembly Lubrication



**49-16-2778**  
Fine Strand Cutting Jaw Assembly Lubrication



**49-16-2772**  
Cu/Al Jaw Assembly Lubrication



**49-16-2777**  
EHS Guy Wire Jaw Assembly Lubrication