

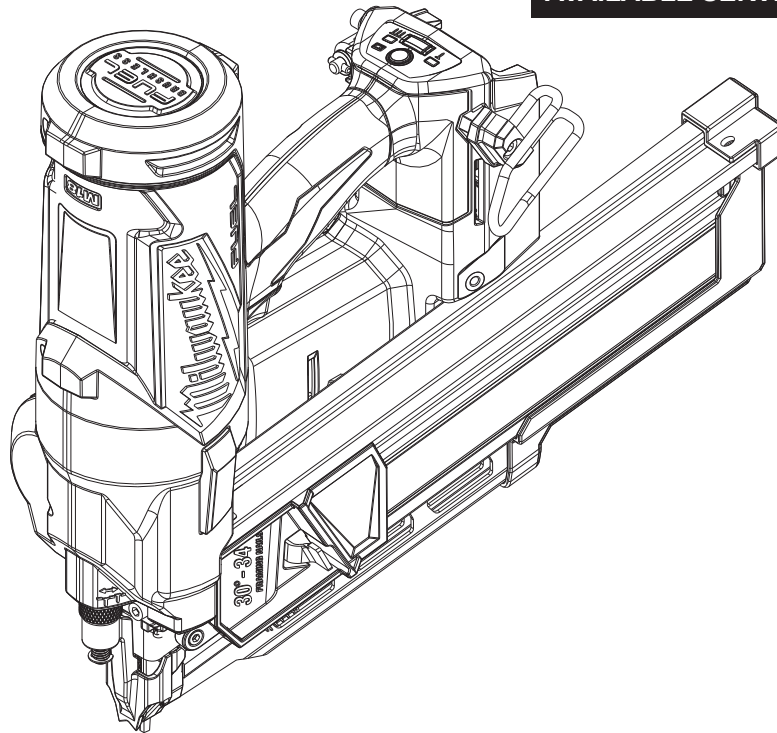


SERVICE PARTS LIST

BULLETIN NO.
54-00-2745

SPECIFY CATALOG NO. AND SERIAL NO. WHEN ORDERING PARTS		REVISED BULLETIN	DATE
M18™ FUEL™ Plastic Collated Framing Nailer			Aug. 2024
CATALOG NUMBER 2745-20	SERIAL NUMBER K83A thru K83C	WIRING INSTRUCTION	

AVAILABLE SERVICE PARTS PAGE 2 - 3



Only maintenance, service, repairs, and replacements of parts as defined in the Operator's Manual can be performed by the user.

All other repairs are to **ONLY** be performed by personnel authorized by MILWAUKEE TOOL. Do not attempt to install other parts; this **COULD** void your tool warranty.

For service, parts, or inquiries, contact us:

- Customer Service at 1.800.SAWDUST (1.800.729.3878)
- E-Service tool repair at: www.milwaukeetool.com/e-service
- Find a local authorized MILWAUKEE service location at Milwaukeetool.com
- Find a MILWAUKEE *factory* Service Center Location or MILWAUKEE *factory* Central Repair Center at Milwaukeetool.com. Send the following, posted paid and insured:
 - Your name, address, and phone number
 - Description of the issues
 - Copy of the proof of purchase
 - Tool, charger, and batteries involved with the issues

MILWAUKEE *factory* Central Repair Centers:

MILWAUKEE TOOL
Central Repair
1401 Sycamore Avenue
Greenwood, MS 38930

MILWAUKEE TOOL
Central Repair
2198 Southtech Drive
Greenwood, IN 46143

EXAMPLE:
Component Parts (Small #) Are Included
When Ordering The Assembly (Large #).

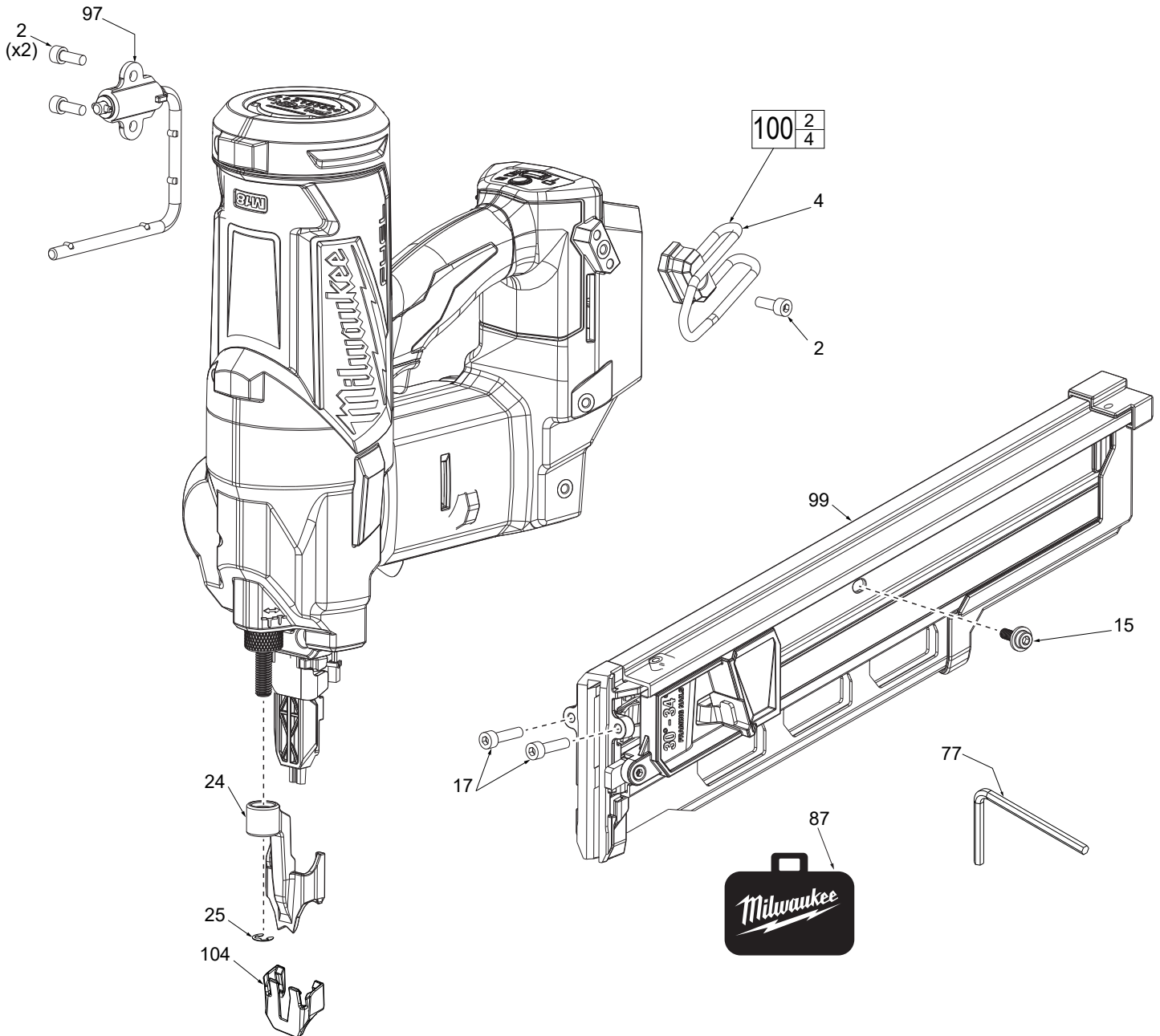


FIG.	PART NO.	DESCRIPTION OF PART	NO. REQ.
2	05-74-0019	M5 x 14mm Cap Hd. Hex Socket Screw	(3)
4	-----	Belt Hook	(1)
15	05-74-0021	M5 x 14mm Flanged Skt. Hd. Mach. Screw	(1)
17	06-75-0062	M5 x 20mm Socket Hex Drive Mach. Screw	(2)
24	44-62-0026	Work Piece Contact Bracket	(1)
25	42-70-0550	E-Retaining Ring	(1)
77	45-96-0024	Allen Wrench	(1)
86	12-20-0220	Service Nameplate (Not Shown)	(1)
87	42-55-0074	Tall FUEL Contractor Bag	(1)
97	14-36-0031	Rafter Hook Assembly	(1)
99	43-40-2745	Magazine Assy. (See page 3 for svc. parts)	(1)
100	42-70-0024	Belt Clip Kit	(1)
104	42-38-0026	No-Mar Pad	(1)

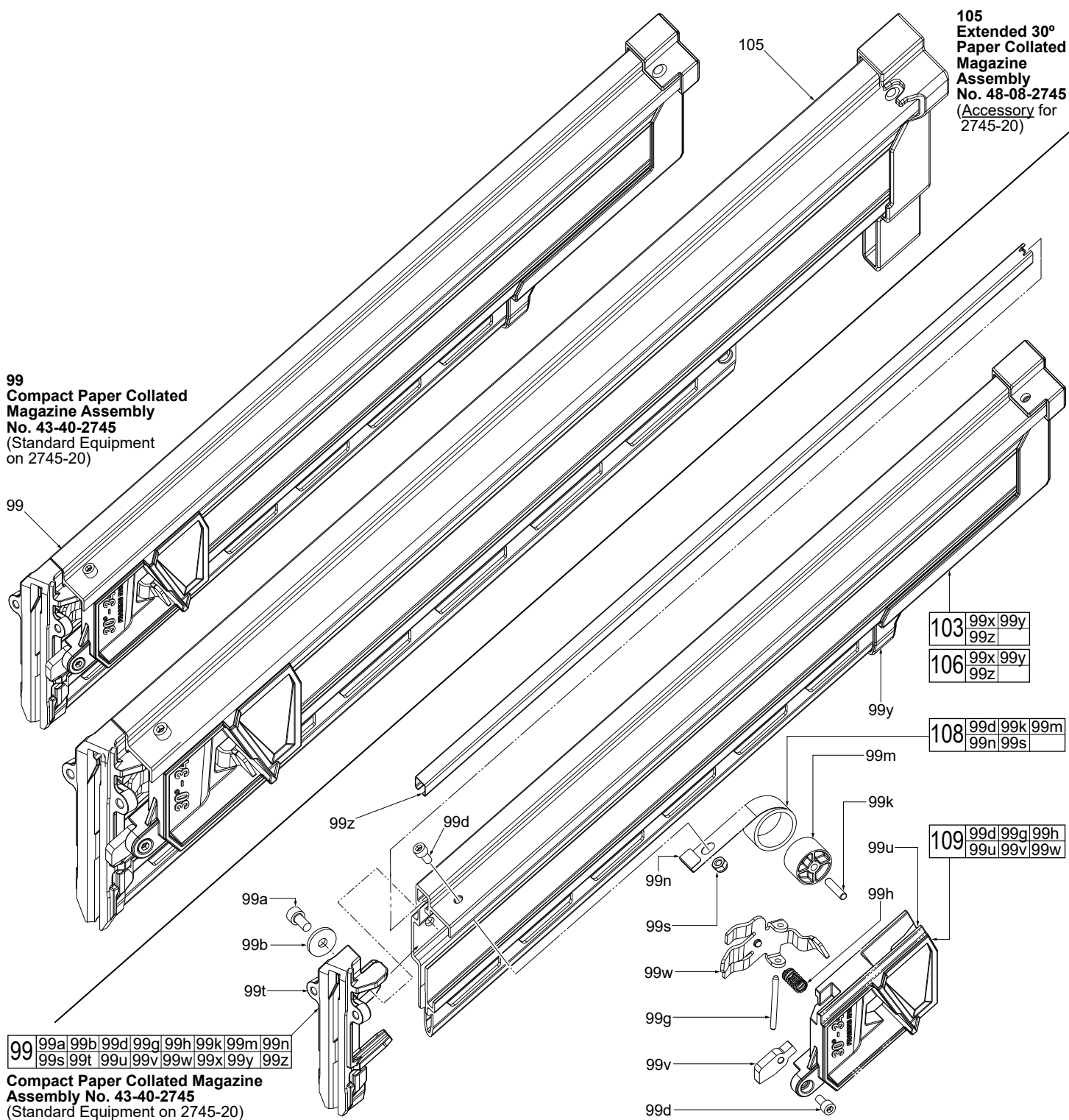


FIG.	PART NO.	DESCRIPTION OF PART	NO. REQ.
99	43-40-2745	30°-34° Plastic Collated Magazine Assembly	(1)
99a	-----	M5 x 10mm Cap Hd. Hex Recess Mach. Sc.	(1)
99b	45-88-2045	Flat Washer	(1)
99d	-----	M4 x 8mm Cap Hd. Hex Recess Mach. Sc.	(2)
99g	-----	Slider Pin	(1)
99h	-----	Spring	(1)
99k	-----	Roller Pin	(1)
99m	-----	Roller Wheel	(1)
99n	-----	Constant Force Spring	(1)
99s	-----	Hex Nut	(1)
99t	-----	Feed Lip	(1)

FIG.	PART NO.	DESCRIPTION OF PART	NO. REQ.
99u	-----	Slider	(1)
99v	-----	Lock Out Stopper	(1)
99w	-----	Nail Pusher	(1)
99x	10-20-3202	Warning Label (Not Shown), u/o #99	(1)
99y	10-20-3119	Warning Label (Not Shown), u/o #105	(1)
99y	-----	Magazine Frame Assy. w/ Riveted End Cap	(1)
99z	-----	Nail Guide	(1)
103	43-40-2746	30°-34° Magazine Frame Assembly	(1)
105	48-08-2745	30°-34° Ext. Plastic Collated Magazine Assy.	(1)
106	43-40-2748	30°-34° Extended Magazine Frame Assy.	(1)
108	14-46-0143	Spring Roller Kit	(1)
109	44-70-2745	30°-34° Nail Pusher Assembly	(1)