

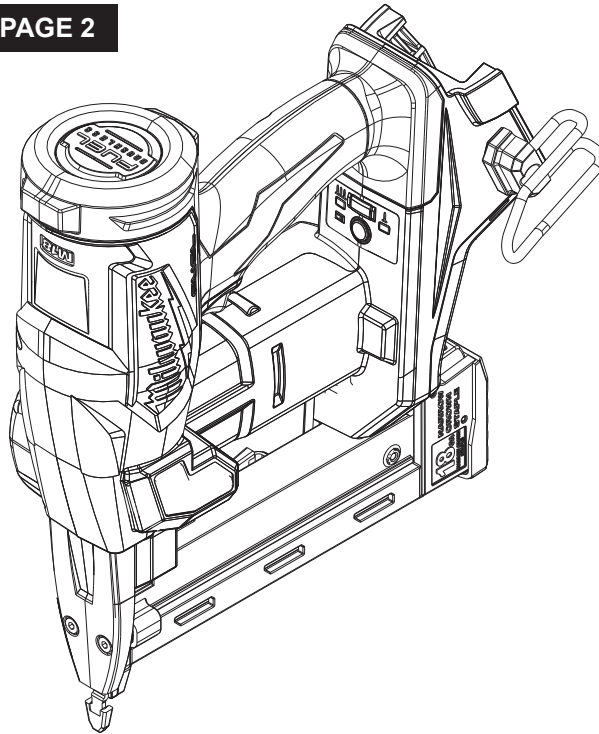


## SERVICE PARTS LIST

**BULLETIN NO.**  
**54-00-2749**

SPECIFY CATALOG NO. AND SERIAL NO. WHEN ORDERING PARTS		REVISED BULLETIN	DATE
<b>M18 FUEL™ 18 GA. Narrow Crown STAPLER</b>			Feb. 2025
CATALOG NO. 2749-20	SERIAL NO. L30A, L30B, L30C	WIRING INSTRUCTION	

**AVAILABLE SERVICE PARTS PAGE 2**



Only maintenance, service, repairs, and replacements of parts as defined in the Operator's Manual can be performed by the user.

All other repairs are to **ONLY** be performed by personnel authorized by MILWAUKEE TOOL. Do not attempt to install other parts; this **COULD** void your tool warranty.

### For service, parts, or inquiries, contact us:

- Customer Service at 1.800.SAWDUST (1.800.729.3878)
- E-Service tool repair at: [www.milwaukeetool.com/e-service](http://www.milwaukeetool.com/e-service)
- Find a local authorized MILWAUKEE service location at [Milwaukeetool.com](http://Milwaukeetool.com)
- Find a MILWAUKEE factory Service Center Location or MILWAUKEE factory Central Repair Center at [Milwaukeetool.com](http://Milwaukeetool.com). Send the following, posted paid and insured:
  - Your name, address, and phone number
  - Description of the issues
  - Copy of the proof of purchase
  - Tool, charger, and batteries involved with the issues

### MILWAUKEE factory Central Repair Centers:

MILWAUKEE TOOL  
Central Repair  
1401 Sycamore Avenue  
Greenwood, MS 38930

MILWAUKEE TOOL  
Central Repair  
2198 Southtech Drive  
Greenwood, IN 46143

00 0 **EXAMPLE:**  
Component Parts (Small #) Are Included  
When Ordering The Assembly (Large #).

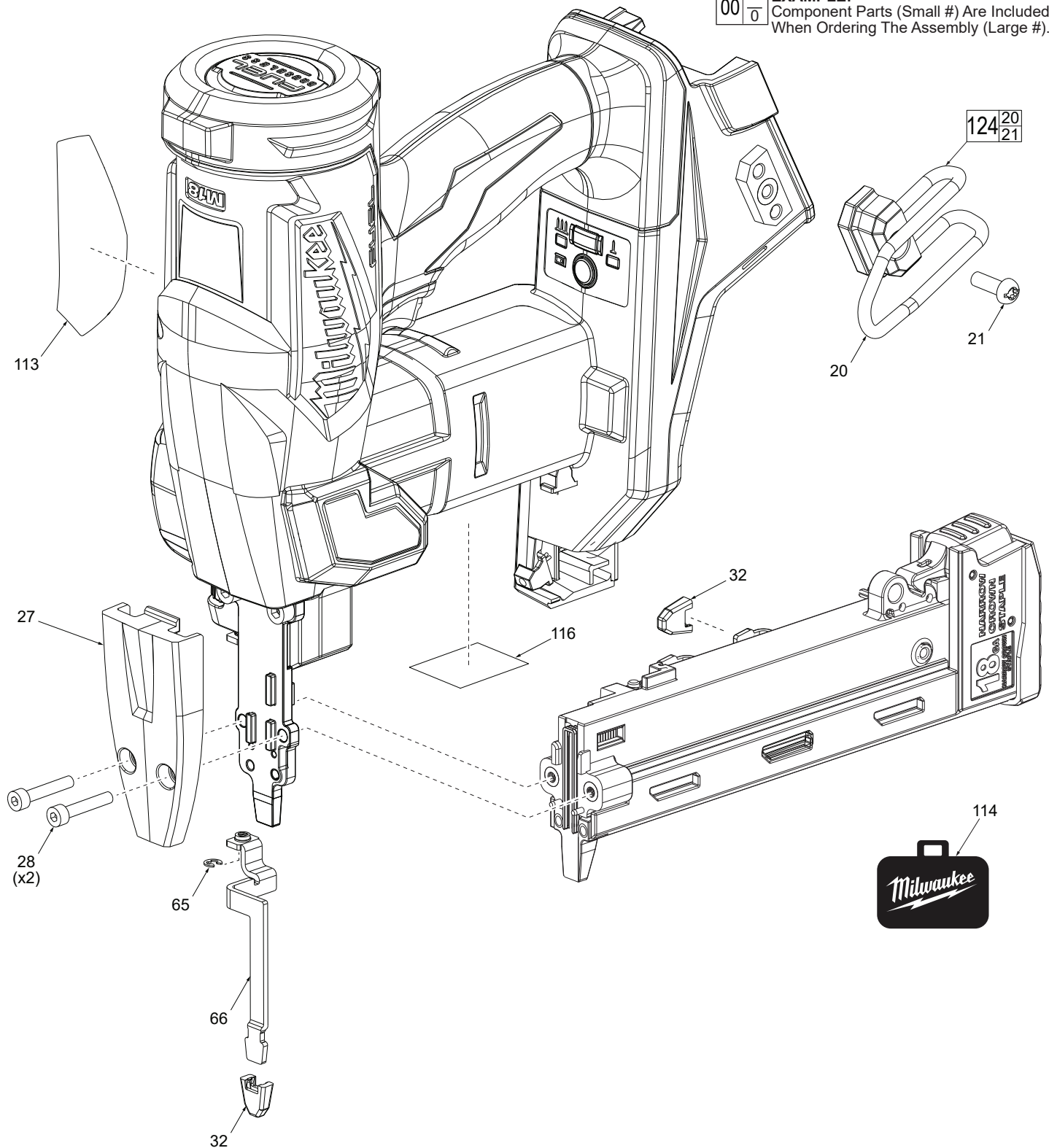


FIG.	PART NO.	DESCRIPTION OF PART	NO. REQ.
20	-----	Framer Belt Hook	(1)
21	05-74-0019	M5 x 14mm Cap Hd. Hex Socket Screw	(1)
27	28-20-0031	Receiver Cover	(1)
28	05-74-0445	M4 x 22mm Mach. Scr. w/ 3mm Hex	(2)
32	42-38-0033	No Mar Pad	(2)
65	42-70-0525	Retaining E-Ring	(1)
66	44-14-0028	Work Contact Bracket	(1)
113	12-20-0245	Service Nameplate	(1)
114	42-55-6150	Contractor Bag	(1)
115	10-20-3696	Magazine Label (Not Shown)	(1)
116	10-20-3697	Warning Label	(1)
124	42-70-0021	Belt Hook Assembly	(1)