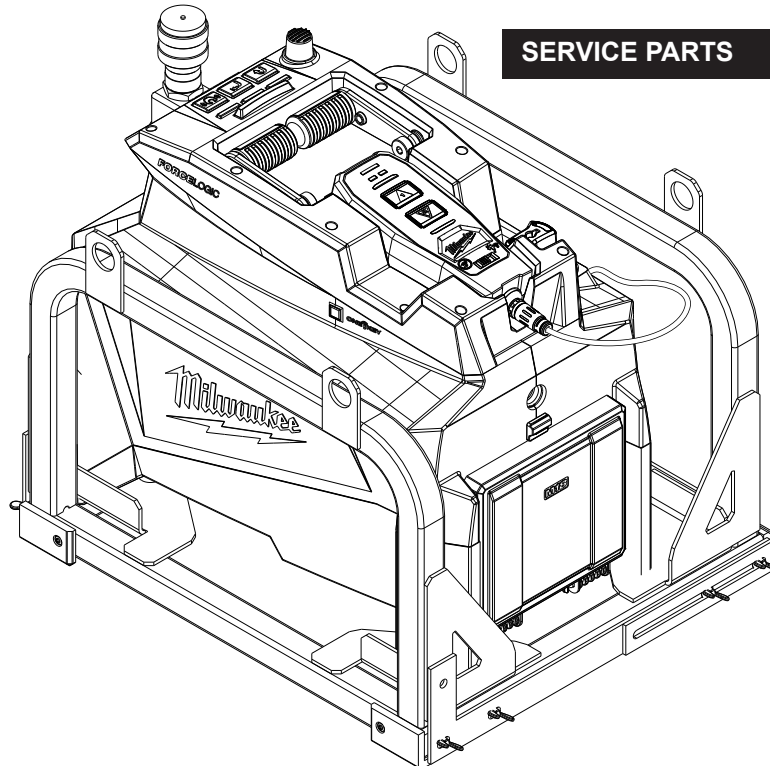




SERVICE PARTS LIST

BULLETIN NO.
54-00-2774

SPECIFY CATALOG NO. AND SERIAL NO. WHEN ORDERING PARTS			REVISED BULLETIN	DATE
M18™ Hydraulic Remote Pump				May 2022
CATALOG NO.	2774-20	SERIAL NUMBER	K15A	
			WIRING INSTRUCTION	



SERVICE PARTS

PAGE 2

**Due to the combination of hydraulics and electronics in this tool,
service can only be performed at Milwaukee Authorized Hydraulic Repair Centers:**

MILWAUKEE ELECTRIC TOOL Central Repair
1401 Sycamore Avenue • Greenwood, MS 38930-7277
Please send your tool directly to this location for service.

Or

Via e-Service at: www.milwaukeetool.com/e-service
questions, please call 1.800.SAWDUST (1.800.729.3878)

Or

Visit www.milwaukeetool.com to find your closest
Milwaukee authorized Hydraulic repair center

Or

Return it to a MILWAUKEE factory Service Center location, freight prepaid and insured.
A copy of the proof of purchase should be included with the return product.

If you have questions please contact Milwaukee Product Service at:

Product Technical Support via phone at: 262.783.8642

Or

Via email at: METProductSupport@milwaukeetool.com

Disassembly is not recommended and could void the warranty.

Removing/Replacing the Coupler (88):

WARNING! Follow the accessory manufacturers' installation instructions. Other uses may cause damage to the tool, accessories, and workpiece.

To remove the coupler:

1. Remove the battery pack.
2. Push and hold down the manual pressure release button for five seconds.
3. Place a wrench on the coupler swivel to steady swivel.
4. Place a second wrench on the coupler and loosen coupler.
5. Once removed, clean out any teflon tape still in the coupler area. **WARNING!** Only use couplers that are rated 10,000 psi (700 bar) or higher.

To replace the coupler:

1. Remove the battery pack.
2. Ensure the new coupler has teflon tape. If it does not, place two wraps of tape on the threads of the coupler. **NOTE:** Only use teflon tape.
3. Place a wrench on the coupler swivel to steady swivel.
4. Place the coupler onto the coupler swivel and, using a second wrench, tighten the coupler into place. **NOTE:** The coupler should be torqued to 45-55 lb.-ft.

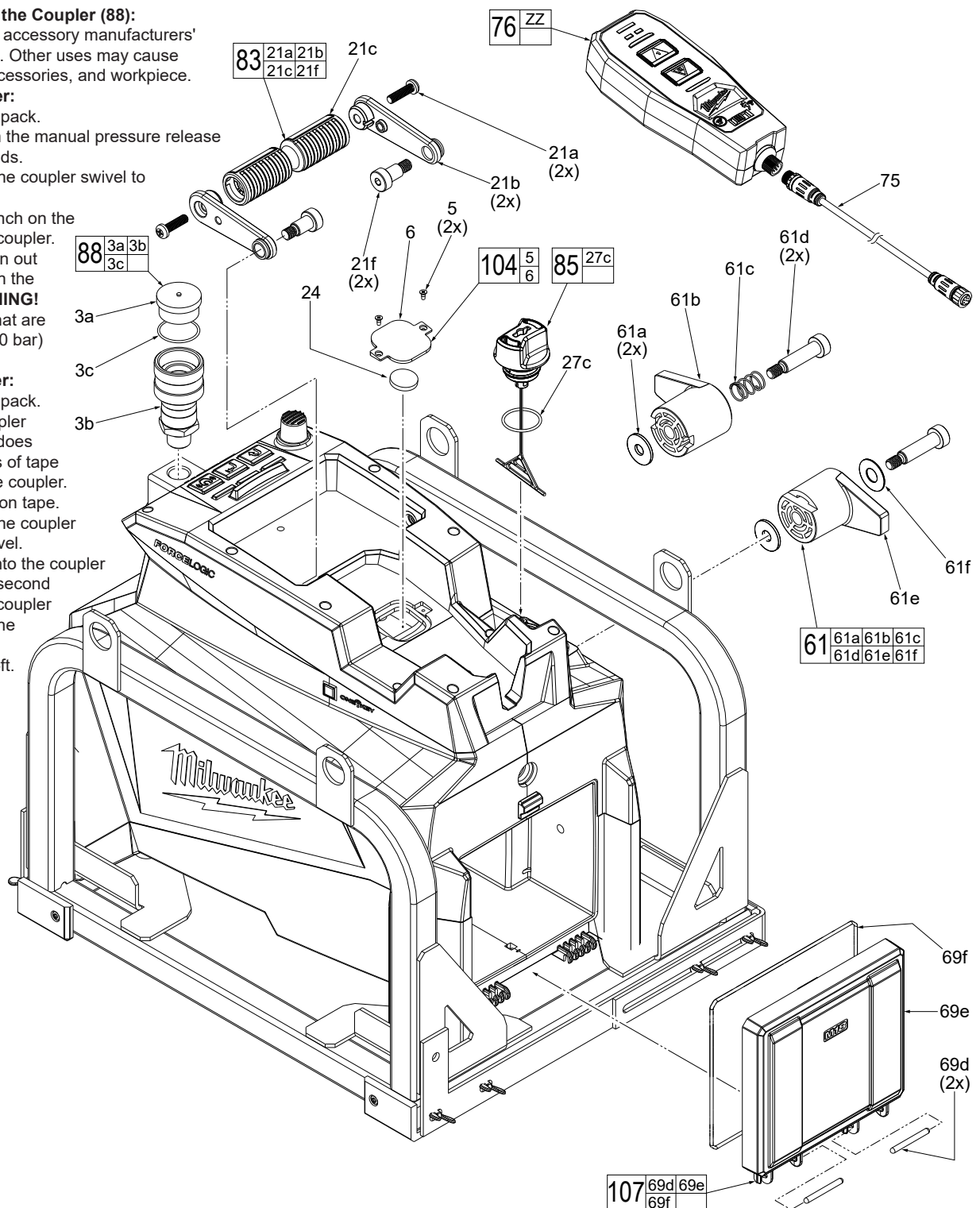


FIG.	PART NO.	DESCRIPTION OF PART	NO. REQ.
3a	-----	Coupler Plug	(1)
3b	-----	High Flow Coupler	(1)
3c	34-40-2774	O-Ring	(1)
5	05-81-1100	M2.6 x 6mm ST Phillips Screw	(2)
6	-----	Coin Cell Door with Anti-Static Seal	(1)
21a	-----	M6 x 22mm Pan Hd. Phillips Machine Screw	(2)
21b	-----	Bail Handle Support	(2)
21c	-----	Bail Handle Grip	(1)
21f	-----	Shoulder Bolt	(2)
24	-----	3V Coin Cell Battery (CR2032, available in stores)	(1)
27c	-----	O-Ring	(1)
61	43-72-0021	Cord Management Service Kit	(1)
61a	-----	Washer	(2)
61b	-----	Cord Wrap-Front	(1)
61c	-----	Spring	(1)
61d	-----	Shoulder Bolt	(2)

FIG.	PART NO.	DESCRIPTION OF PART	NO. REQ.
61e	-----	Cord Wrap-Rear	(1)
61f	-----	Washer	(1)
69d	-----	Door Pin	(2)
69e	-----	Battery Holder Door	(1)
69f	-----	Battery Door Seal	(1)
75	42-44-0024	Controller Cable	(1)
76	14-20-0020	Controller	(1)
76b	12-20-0204	Service Nameplate - Controller (Not Shown)	(1)
76c	10-20-2176	Warning Label - Controller (Not Shown)	(1)
78	12-20-0203	Service Nameplate - Pump (Not Shown)	(1)
79	10-20-2586	Remote Sequence Label-Pump (Not Shown)	(1)
83	43-62-0046	Top Handle Service Kit	(1)
85	42-52-0034	Oil Cap Service Assembly	(1)
88	42-90-0026	High Flow Coupler Service Kit with Plug	(1)
104	42-92-0064	Coin Cell Door Service Kit	(1)
107	42-92-0062	Battery Door Service Kit	(1)
ZZ	42-92-0069	Controller Battery Door Kit (Not Shown)	(1)