

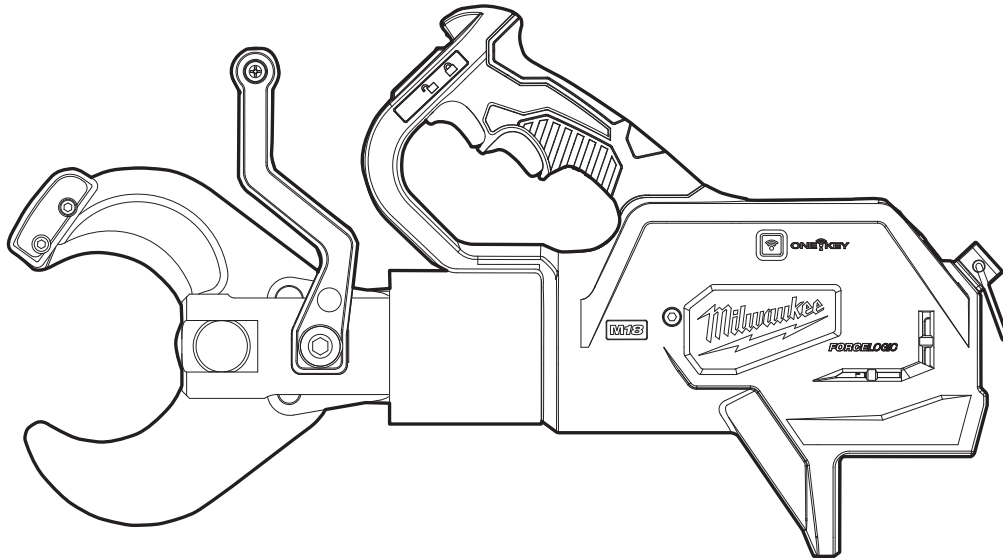


## SERVICE PARTS LIST

BULLETIN NO.  
54-00-2776

SPECIFY CATALOG NO. AND SERIAL NO. WHEN ORDERING PARTS		REVISED BULLETIN	DATE
<b>M18™ FORCELOGIC™ 3" Underground Cable Cutter</b>			Apr. 2025
CAT. NO. 2776-20 (Non-Remote)	SERIAL NUMBER H49A & B		
CAT. NO. 2776R-20 (Wireless Remote)	SERIAL NUMBER H50A & B & C		

CUTTER HEAD SERVICE PARTS	PAGE 2	LUBRICATION INSTRUCTIONS	PAGE 3
ACCESSORIES	PAGE 2	TORQUE SPECIFICATIONS	PAGE 4



**Due to the combination of hydraulics and electronics in this tool,  
service can only be performed at Milwaukee Authorized Hydraulic Repair Centers:**

### MILWAUKEE TOOL Central Repair

**1401 Sycamore Avenue • Greenwood, MS 38930-7277**

Please send your tool directly to this location for service.

Or

**Via e-Service at: [www.milwaukeetool.com/e-service](http://www.milwaukeetool.com/e-service)**

questions, please call 1.800.SAWDUST (1.800.729.3878)

Or

Visit [www.milwaukeetool.com](http://www.milwaukeetool.com) to find your closest  
Milwaukee authorized Hydraulic repair center

Or

Return it to a MILWAUKEE *factory* Service Center location, freight prepaid and insured.  
A copy of the proof of purchase should be included with the return product.

---

If you have questions please contact Milwaukee Product Service at:

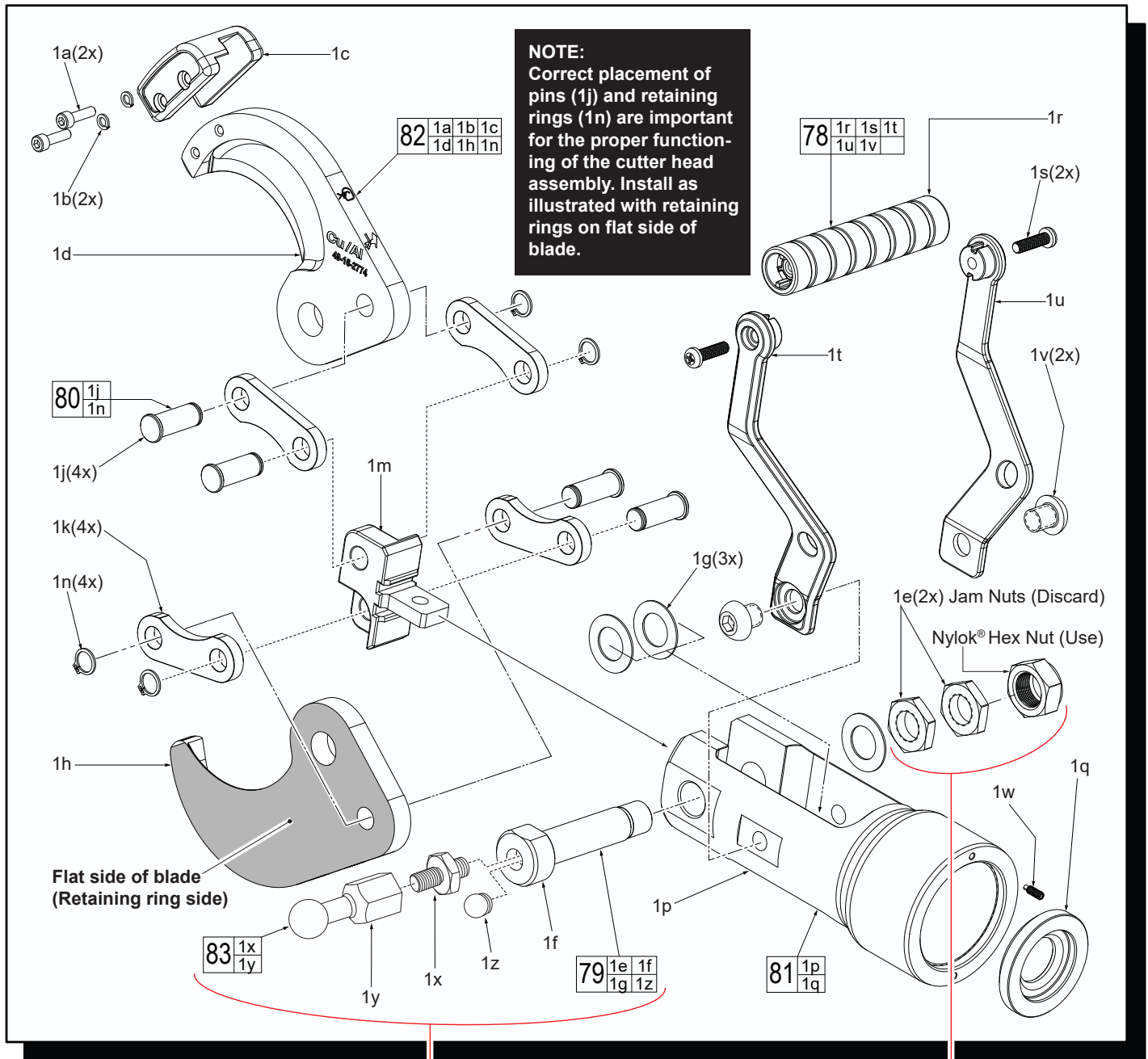
**Product Technical Support via phone at: 262.783.8642**

Or

**Via email at: [METProductSupport @milwaukeetool.com](mailto:METProductSupport@milwaukeetool.com)**

**Disassembly is not recommended and could void the warranty.**

# Accessories and External Service Parts for 2776-20 & 2776R-20 3" Underground Cable Cutters



## NOTE:

If the tool you are servicing has the old version of the M18 screw bolt (1f), you must also order screw bolt kit 42-32-0265 (79) when ordering the grounding service kit 14-46-0452 (83).


## NOTE:

The original design of this tool utilized two jam nuts (1e) to aid in securing the Cutting Blades (82) in the Clevis Assembly (81). One M17 Nylok® Hex Nut now replaces the two jam nuts. When servicing the tool, DO NOT attempt to reuse the two jam nuts...remove and discard.

FIG.	PART NO.	DESCRIPTION OF PART	NO. REQ.
1	-----	Underground Cutter Head Assembly	(1)
1a	-----	M5 x 18mm Cap Screw 4mm Hex Drive	(2)
1b	-----	Spring Washer	(2)
1c	-----	Blade Retainer	(1)
1d	-----	Left Blade	(1)
1e	-----	M17 Nut	(2)
1f	-----	M18 Screw Bolt	(1)
1g	-----	Washer	(3)
1h	-----	Right Blade	(1)
1j	44-60-0049	Pin	(4)
1k	44-66-0116	Connector Plate	(4)
1m	44-14-0075	T-Connector	(1)
1n	34-80-1300	Retaining Ring	(4)
1p	-----	Clevis - Underground Cutter	(1)
1q	-----	Stop Ring	(1)
1r	-----	Bail Handle Grip	(1)
1s	-----	M6 x 22mm Pan Hd. Phillips Screw	(2)
1t	-----	Bail Handle Support - Left	(1)

FIG.	PART NO.	DESCRIPTION OF PART	NO. REQ.
1u	-----	Bail Handle Support - Right	(1)
1v	-----	M8 x 6.5 Screw with 8mm Hex Drive	(2)
1w	-----	Extended Point Set Screw	(1)
1x	-----	Thread Adapter	(1)
1y	-----	Grounding Ball Stud	(1)
1z	-----	Rubber Plug	(1)
78	14-34-0122	Bail Handle Kit	(1)
79	42-32-0265	Screw Bolt Kit (Accessory)	(1)
80	44-60-0059	Pin Kit	(1)
81	-----	Clevis Assembly	(1)
82	49-16-2774	Replacement UG Cutter Blade Set	(1)
83	14-46-0452	Grounding Service Kit (Accessory)	(1)
84	10-20-1119	Label for Wireless Remote (Not Shown)	(1)
85	42-70-0027	Carabiner (Not Shown)	(1)
86	48-22-8280	Underground Cutter Bag (Not Shown)	(1)
87	22-80-2776	Remote Control	(1)
		For 2776R-20 Only (Not Shown)	(1)

## LUBRICATION INSTRUCTIONS

 S2 Grease, No. 49-08-5267

 243 Blue Loctite® Thread Sealant, 44-22-0095



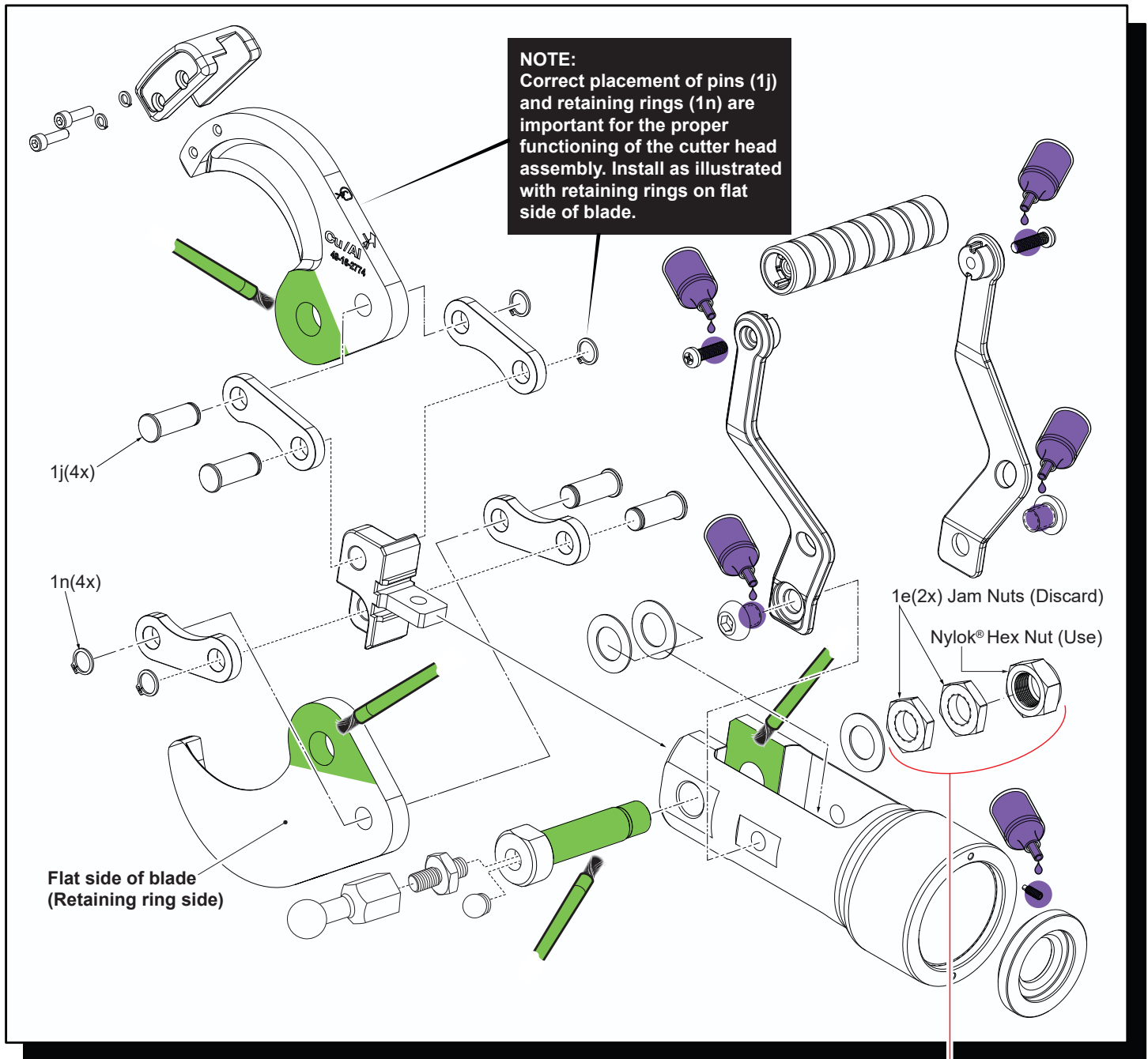
### NOTE

Regarding parts to receive thread locking sealant:  
Place one to two drops of the recommended Loctite® thread locking sealant (or the equivalent) to the threads of parts shown prior to installation.



### NOTE

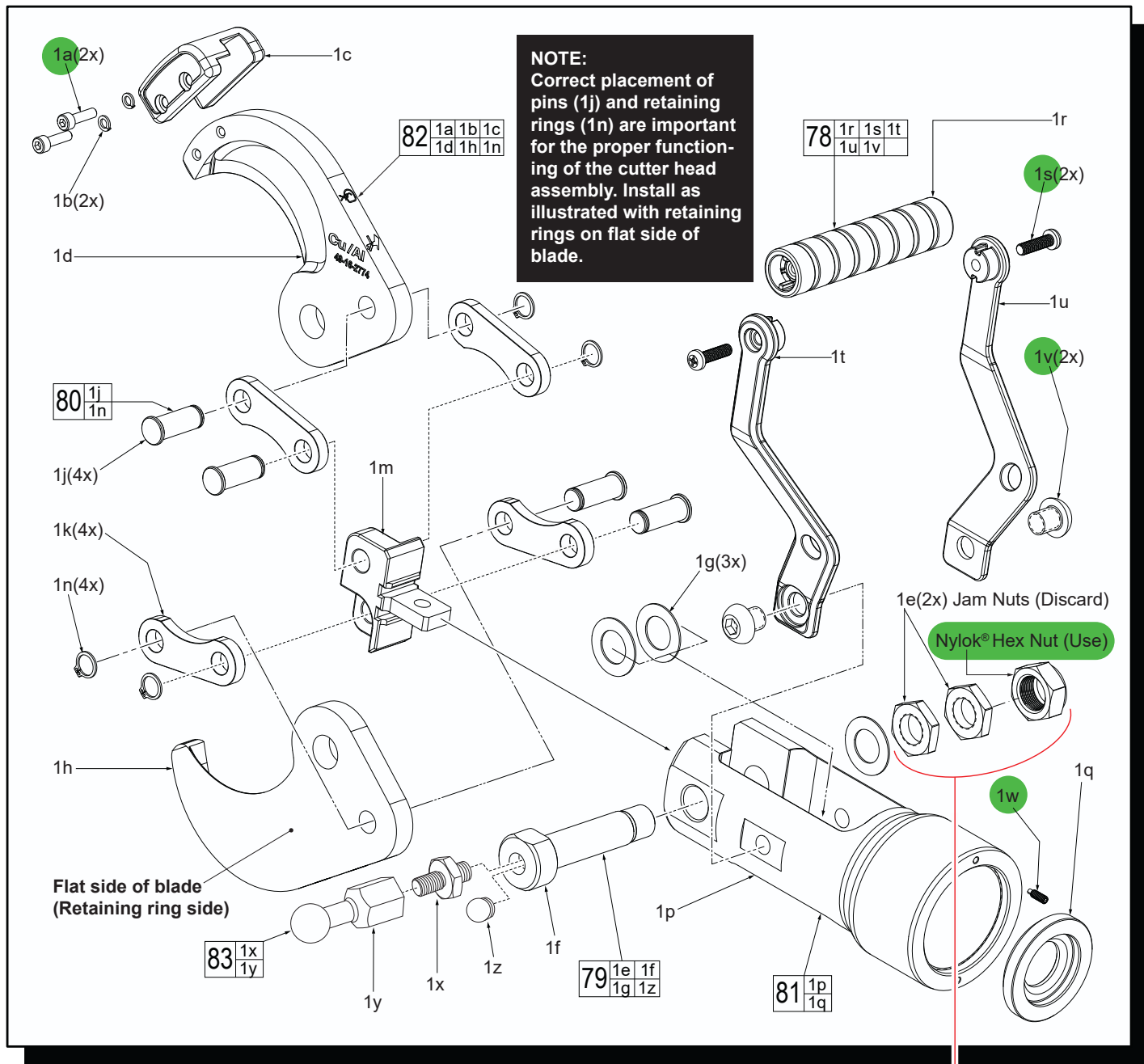
Regarding parts to be lubricated:  
Apply a light coating of grease to all highlighted parts shown prior to installation. Reference the key above for grease types.



### NOTE:

The original design of this tool utilized two jam nuts (1e) to aid in securing the Cutting Blades (82) in the Clevis Assembly (81). One M17 Nylok® Hex Nut now replaces the two jam nuts. When servicing the tool, DO NOT attempt to reuse the two jam nuts...remove and discard.

## TORQUE SPECIFICATIONS



### NOTE:

The original design of this tool utilized two jam nuts (1e) to aid in securing the Cutting Blades (82) in the Clevis Assembly (81). One M17 Nylok® Hex Nut now replaces the two jam nuts. When servicing the tool, DO NOT attempt to reuse the two jam nuts...remove and discard.

Cutter Head Assembly						
Torque Specifications *Red denotes Critical Torque						
Fig.	Part No.	Part or Where Used	kgf-cm		lb-in	
1a		M5 x 18 Screw (Blade Retainer)	100	±3	86.8	±2
1e		M17 Hex Nut	175	±3	151.9	±2
1s		M6 x 22 Screw (Bail Handle Support)	30	±3	26.04	±2
1v		M12 x 6.5 Screw (Bail Handle Support)	100	±3	86.8	±2
1w		Extended Point Set Screw (Clevis)	10	±1	8.6	±1