



SERVICE PARTS LIST

BULLETIN NO.
54-00-2777

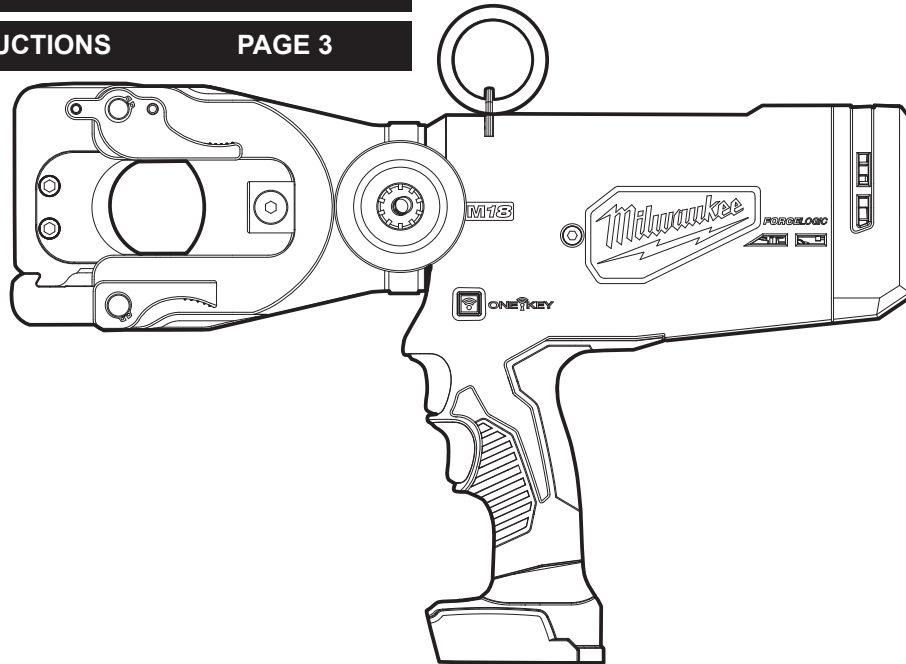
SPECIFY CATALOG NO. AND SERIAL NO. WHEN ORDERING PARTS		REVISED BULLETIN	DATE
M18™ FORCE LOGIC™ 1590 ACSR Cutter			May 2025
CATALOG NO. 2777-20	SERIAL NUMBER H51A H51B	WIRING INSTRUCTION	

CUTTER HEAD SERVICE PARTS PAGE 2

TORQUE SPECIFICATIONS PAGE 4

ACCESSORIES PAGE 2

LUBRICATION INSTRUCTIONS PAGE 3



Only maintenance, service, repairs, and replacements of parts as defined in the Operator's Manual can be performed by the user.

All other repairs are to ONLY be performed by personnel authorized by MILWAUKEE TOOL. Do not attempt to install other parts; this COULD void your tool warranty.

For service, parts, or inquiries, contact us:

- Customer Service at 1.800.SAWDUST (1.800.729.3878)
- E-Service tool repair at: www.milwaukeetool.com/e-service
- Find a local authorized MILWAUKEE service location at Milwaukeetool.com
- Find a MILWAUKEE factory Service Center Location or MILWAUKEE factory Central Repair Center at Milwaukeetool.com. Send the following, posted paid and insured:
 - Your name, address, and phone number
 - Description of the issues
 - Copy of the proof of purchase
 - Tool, charger, and batteries involved with the issues

MILWAUKEE factory Central Repair Centers:

MILWAUKEE TOOL
Central Repair
1401 Sycamore Avenue
Greenwood, MS 38930

MILWAUKEE TOOL
Central Repair
2198 Southtech Drive
Greenwood, IN 46143

SERVICE PARTS EXPLODED VIEW

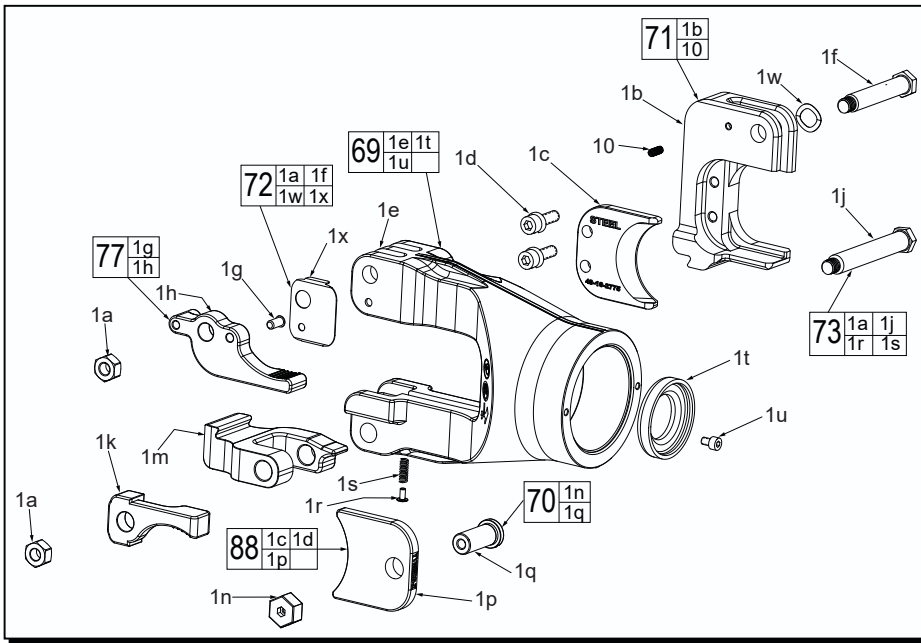


FIG.	PART NO.	DESCRIPTION OF PART	NO. REQ.	FIG.	PART NO.	DESCRIPTION OF PART	NO. REQ.
1	-----	Overhead Cutter Head Assembly	(1)	1r	-----	Head Pin	(1)
1a	-----	Hexagon Nut	(2)	1s	-----	Spring	(1)
1b	-----	Blade Holder	(1)	1t	-----	Stop Ring	(1)
1c	-----	Blade	(1)	1u	-----	M4 x 10mm Cap Screw	(1)
1d	-----	M6 x 20mm Hex Drive Scr. w/ Washer	(2)	1w	-----	Wave Spring	(1)
1e	-----	Cutter Head Body	(1)	1x	-----	Holder Plate	(1)
1f	-----	Pin	(1)	10	-----	Set Screw	(1)
1g	-----	Ball Spring Plunger	(1)	69	28-25-0040	Clevis and Stop Set Screw Assembly	(1)
1h	-----	Trip Lever	(1)	70	14-46-0641	Blade Pin and Thumb Screw Kit	(1)
1j	-----	Pin	(1)	71	43-72-0314	Fixed Blade Holder and Set Screw Kit	(1)
1k	44-10-0590	Release Lever	(1)	72	14-46-0642	Trip Lever, Pin and Nut Kit	(1)
1m	44-20-0555	Latch Clip	(1)	73	14-46-0643	Release Lever, Pin and Nut Kit	(1)
1n	-----	Thumb Screw	(1)	77	44-10-0585	Trip Lever Assembly	(1)
1p	-----	Moveable Blade	(1)	88	49-16-2775	Replacement OH Cutter Blade Set	(1)
1q	-----	Pin Blade Connector	(1)				

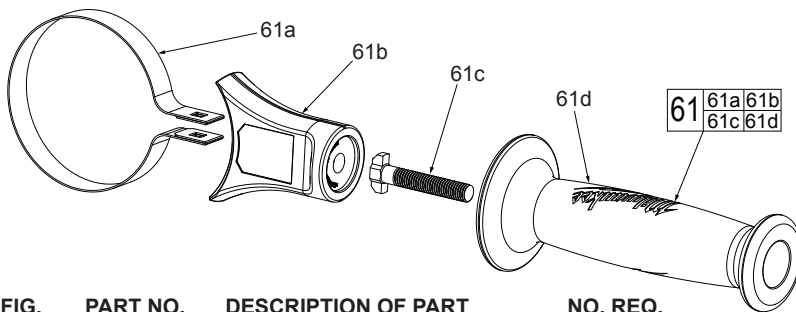



FIG.	PART NO.	DESCRIPTION OF PART	NO. REQ.
61	14-34-0270	Side Handle Assembly	(1)
61a	-----	Clamping Ring	(1)
61b	-----	Handle Housing with Warning Label	(1)
61c	-----	T-Bolt	(1)
61d	-----	Side Handle	(1)

ACCESSORIES

FIG.	PART NO.	DESCRIPTION OF PART	NO. REQ.
	48-22-8279	Overhead Cutter & Crimper Bag, Not Shown (Accessory)	(1)
	49-96-0012	5mm Hex Wrench (Not Shown)	(1)
	42-70-0027	Carabiner (Not Shown)	(1)
	12-20-0089	Service Nameplate (Not Shown)	(1)

LUBRICATION INSTRUCTIONS

 S2 Grease, No. 49-08-5267

 243 Blue Loctite® Thread Sealant, 44-22-0095



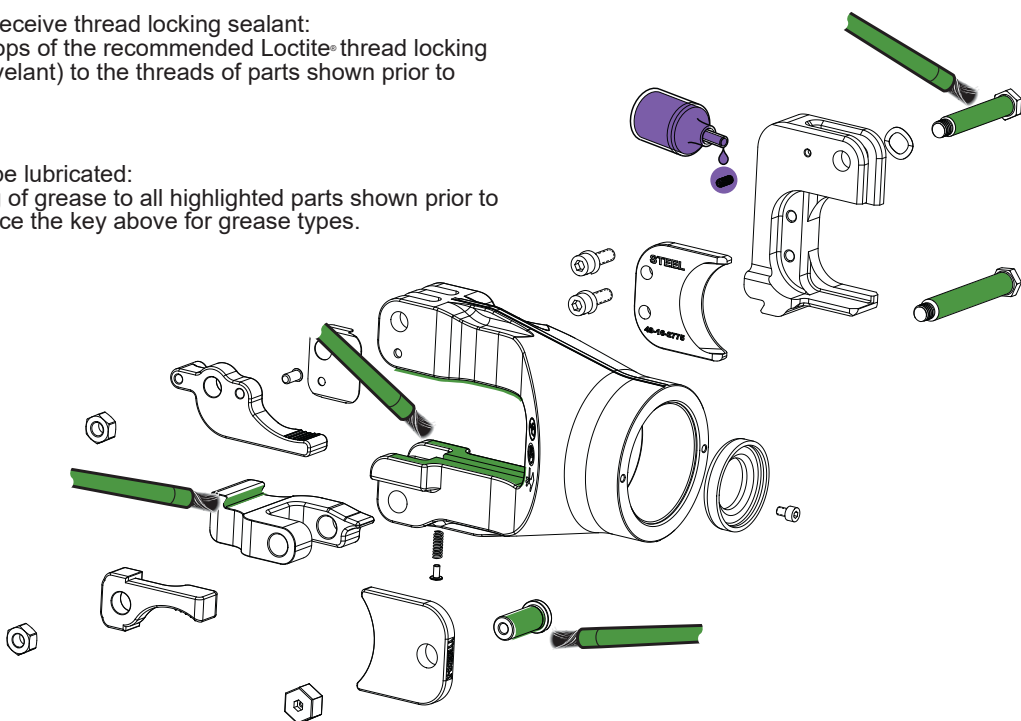
NOTE

Regarding parts to receive thread locking sealant:
Place one to two drops of the recommended Loctite® thread locking sealant (or the equivalent) to the threads of parts shown prior to installation.

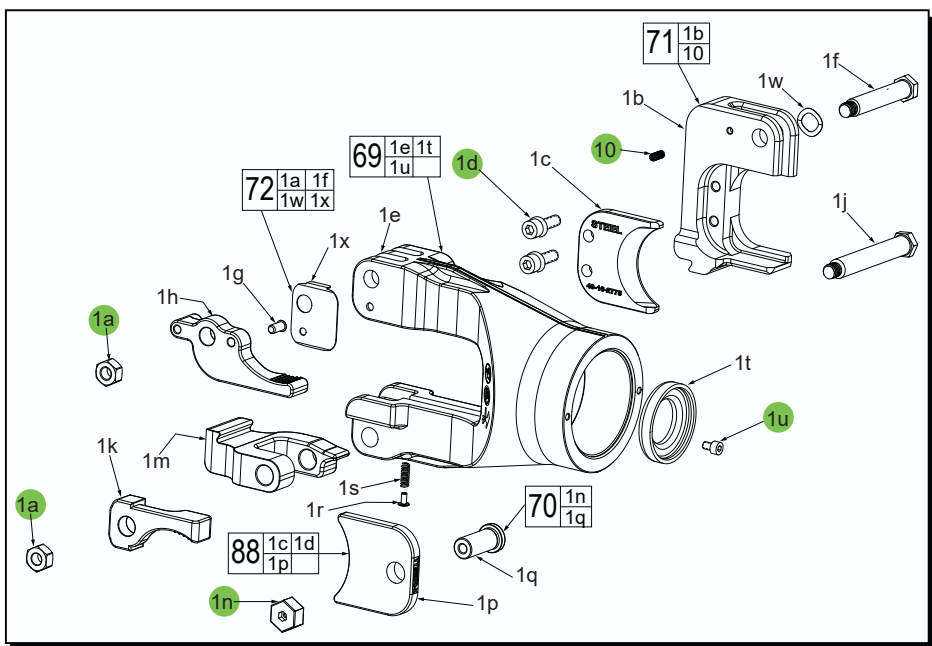


NOTE

Regarding parts to be lubricated:
Apply a light coating of grease to all highlighted parts shown prior to installation. Reference the key above for grease types.



TORQUE SPECIFICATIONS



SCREW TORQUE SPECIFICATIONS

FIG.	PART	WHERE USED	SEAT TORQUE	
			(kgf-cm)	(lb-in)
1a	Hexagon Nut	Levers	50±3	43±3
1d	Screw	Blade	150±5	130±4
1n	Thumb Screw	Moveable Blade	50±3	43±3
1u	Screw	Cutter Head Body	10±1	9±1
10	Screw	Blade Holder	15±3	13±3

*Red denotes Critical Torque