



## SERVICE PARTS LIST

BULLETIN NO.  
54-00-2778

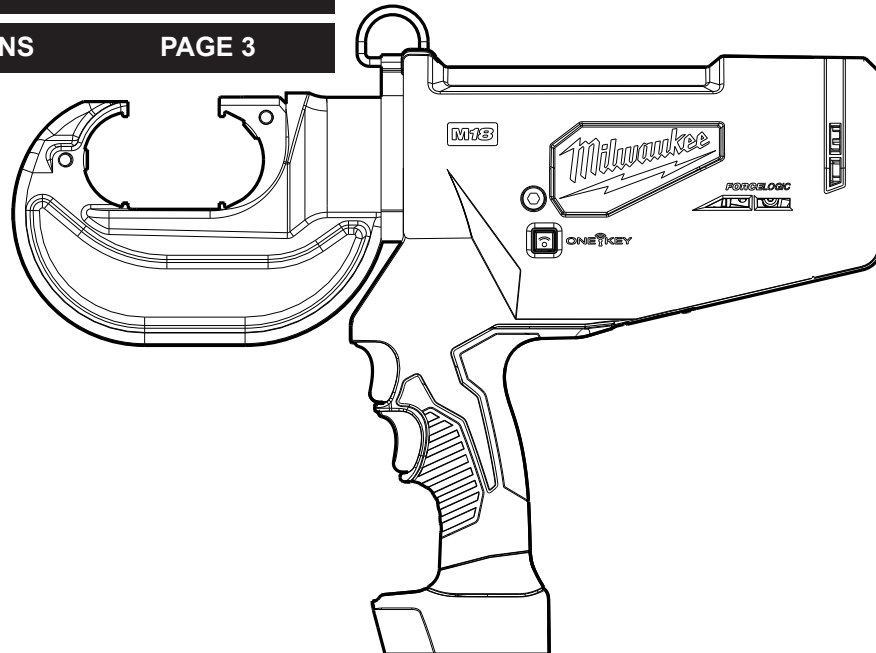
SPECIFY CATALOG NO. AND SERIAL NO. WHEN ORDERING PARTS			REVISED BULLETIN	DATE
M18™ FORCE LOGIC™ 12T Utility Crimper				Apr. 2025
CATALOG NO.	2778-20	SERIAL NUMBER	H52A H52B H52C	
			WIRING INSTRUCTION	

CUTTER HEAD SERVICE PARTS PAGE 2

U DIES and ACCESSORIES PAGE 2

LUBRICATION INSTRUCTIONS PAGE 3

TORQUE SPECIFICATIONS PAGE 3



Only maintenance, service, repairs, and replacements of parts as defined in the Operator's Manual can be performed by the user.

All other repairs are to ONLY be performed by personnel authorized by MILWAUKEE TOOL. Do not attempt to install other parts; this COULD void your tool warranty.

### For service, parts, or inquiries, contact us:

- Customer Service at 1.800.SAWDUST (1.800.729.3878)
- E-Service tool repair at: [www.milwaukeetool.com/e-service](http://www.milwaukeetool.com/e-service)
- Find a local authorized MILWAUKEE service location at [Milwaukeetool.com](http://Milwaukeetool.com)
- Find a MILWAUKEE factory Service Center Location or MILWAUKEE factory Central Repair Center at [Milwaukeetool.com](http://Milwaukeetool.com). Send the following, posted paid and insured:
  - Your name, address, and phone number
  - Description of the issues
  - Copy of the proof of purchase
  - Tool, charger, and batteries involved with the issues

### MILWAUKEE factory Central Repair Centers:

MILWAUKEE TOOL  
Central Repair  
1401 Sycamore Avenue  
Greenwood, MS 38930

MILWAUKEE TOOL  
Central Repair  
2198 Southtech Drive  
Greenwood, IN 46143

## SERVICE PARTS EXPLODED VIEW

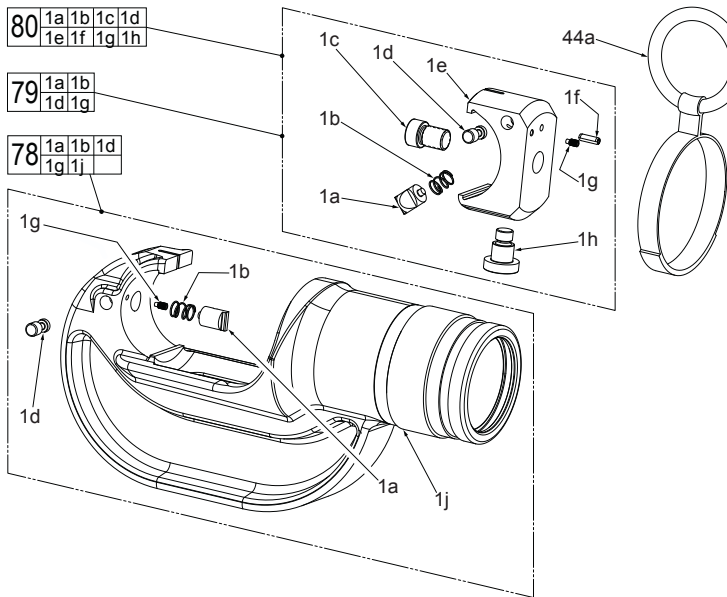


FIG.	PART NO.	DESCRIPTION OF PART	NO. REQ.
1a	-----	Die Holder	(2)
1b	-----	Die Spring	(2)
1c	-----	Cap Screw	(1)
1d	-----	Die Release	(2)
1e	-----	Ram Head	(1)
1f	-----	Roll Pin	(1)
1g	-----	Socket Set Screw	(1)
1h	-----	Head Screw	(1)
1j	-----	Cylinder	(1)
44a	44-90-0026	Lift Ring	(1)
45	43-86-2778	Crimper Head Boot (For serial break A)	(1)
45	43-86-0021	Crimper Head Boot (For serial break B)	(1)
78	28-25-2778	Crimper Head Assy. (For serial break A)	(1)
78	28-25-0015	Crimper Head Assy. (For serial break B)	(1)
79	43-72-0154	Die Holder Kit	(1)
80	14-12-0125	Ram Head Assembly	(1)
	42-70-0027	Carabiner (Not Shown)	(1)
	12-20-2780	Service Nameplate (Not Shown)	(1)
	48-22-8279	Utility Bag (Accessory, Not Shown)	(1)
	49-32-0110	32oz. FORCE LOGIC™ Oil (Not Shown)	(1)

12T COPPER U DIE			
	WIRE SIZE	COLOR CODE	PART NUMBER
COPPER	#8 AWG	RED	49-12-U008C
	#6 AWG	BLUE	49-12-U006C
	#4 AWG	GREY	49-12-U004C
	#2 AWG	BROWN	49-12-U002C
	#1 AWG	GREEN	49-12-U001C
	1/0 AWG	PINK	49-12-U01AC
	2/0 AWG	BLACK	49-12-U02AC
	3/0 AWG	ORANGE	49-12-U03AC
	4/0 AWG	PURPLE	49-12-U04AC
	250 MCM	YELLOW	49-12-U250C
	300 AWG	WHITE	49-12-U300C
	350 MCM	RED	49-12-U350C
	400 MCM	BLUE	49-12-U400C
	500 MCM	BROWN	49-12-U500C
	600 MCM	GREEN	49-12-U600C
	750 MCM	BLACK	49-12-U750C

U DIE KIT 49-12-KITC: Includes #6 AWG through 750 MCM (Total 15 sets)

12T DUAL RATED COPPER/ALUMINUM U DIE			
	WIRE SIZE	COLOR CODE	PART NUMBER
DUAL RATED COPPER/ALUMINUM	#8 AWG	BLUE	49-12-U008
	#6 AWG	GRAY	49-12-U006
	#4 AWG	GREEN	49-12-U004
	#2 AWG	PINK	49-12-U002
	#1 AWG	GOLD	49-12-U001
	1/0 AWG	TAN	49-12-U01A
	2/0 AWG	OLIVE	49-12-U02A
	3/0 AWG	RUBY	49-12-U03A
	4/0 AWG	WHITE	49-12-U04A
	250 MCM	RED	49-12-U250
	300 AWG	BLUE	49-12-U300
	350 MCM	BROWN	49-12-U350
	400 MCM	BLUE	49-12-U400
	500 MCM	BROWN	49-12-U500
	600 MCM	GREEN	49-12-U600
	750 MCM	BLACK	49-12-U750

U DIE KIT 49-12-KITA: Includes #6 AWG through 750 MCM (Total 15 sets)


## LUBRICATION INSTRUCTIONS


### NOTE

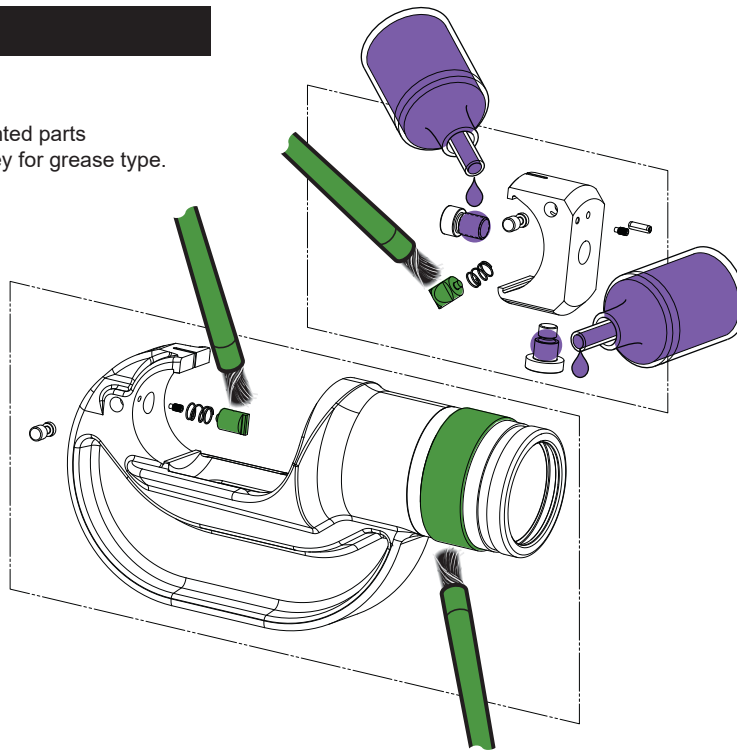
Regarding parts to be lubricated:  
Apply a light coating of grease to all highlighted parts  
shown prior to installation. Reference the key for grease type.

### NOTE

Regarding parts to receive  
thread locking sealant:  
Place one to two drops of the  
recommended Loctite® thread locking  
sealant (or the equivalent) to threads  
of parts shown prior to installation.

 ST-80 White Lithium Grease,  
No. 49-08-0145

 243 Blue Loctite® Thread Locking Sealant,  
No. 44-22-0095



## TORQUE SPECIFICATIONS

1c	Cap Screw	207±3 kgf-cm	180±2 lb-in
1h	Alignment Hd. Scr.	203±3 kgf-cm	176±2 lb-in

