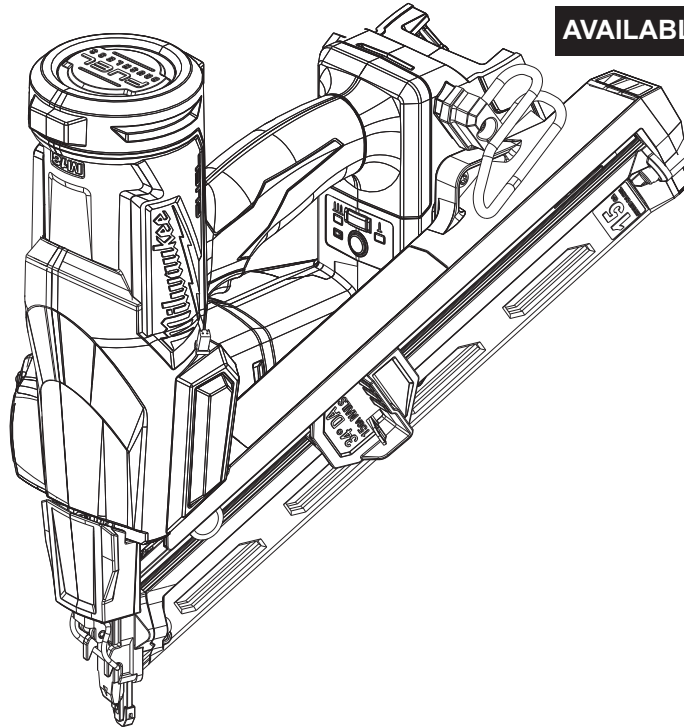




SERVICE PARTS LIST

BULLETIN NO.
54-00-2839

SPECIFY CATALOG NO. AND SERIAL NO. WHEN ORDERING PARTS				REVISED BULLETIN	DATE
M18™ FUEL™ 15 GA. Angled Finishing Nailer					Dec. 2024
CATALOG NUMBER	2839-20	SERIAL NUMBER	M03A	WIRING INSTRUCTION	



AVAILABLE SERVICE PARTS PAGE 2

Only maintenance, service, repairs, and replacements of parts as defined in the Operator's Manual can be performed by the user.

All other repairs are to ONLY be performed by personnel authorized by MILWAUKEE TOOL. Do not attempt to install other parts; this COULD void your tool warranty.

For service, parts, or inquiries, contact us:

- Customer Service at 1.800.SAWDUST (1.800.729.3878)
- E-Service tool repair at: www.milwaukeetool.com/e-service
- Find a local authorized MILWAUKEE service location at Milwaukeetool.com
- Find a MILWAUKEE *factory* Service Center Location or MILWAUKEE *factory* Central Repair Center at Milwaukeetool.com. Send the following, posted paid and insured:
 - Your name, address, and phone number
 - Description of the issues
 - Copy of the proof of purchase
 - Tool, charger, and batteries involved with the issues

MILWAUKEE *factory* Central Repair Centers:

MILWAUKEE TOOL
Central Repair
1401 Sycamore Avenue
Greenwood, MS 38930

MILWAUKEE TOOL
Central Repair
2198 Southtech Drive
Greenwood, IN 46143

00 0 **EXAMPLE:**
Component Parts (Small #) Are Included
When Ordering The Assembly (Large #).

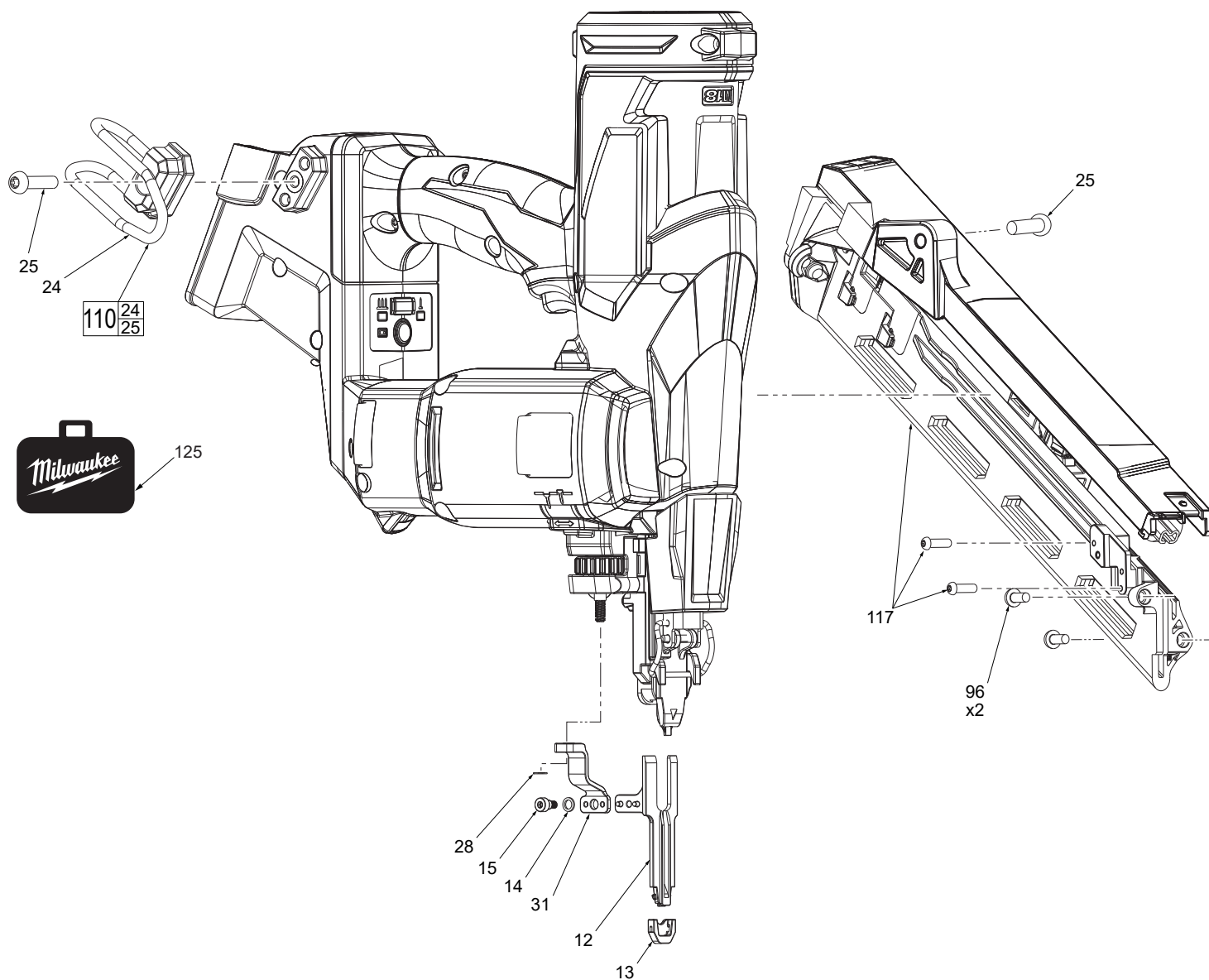


FIG.	PART NO.	DESCRIPTION OF PART	NO. REQ.
12	42-36-0116	WCB	1
13	14-46-0341	WCB Tip	2
14	45-88-0251	Washer	1
15	05-89-0100	Shoulder Screw	1
24	-----	Belt Hook	1
25	05-81-0707	M5 x 0.8mm PH T-25 Screw	2
28	42-24-0026	C Clip	1
31	14-30-0063	WCB Linkage	1
96	05-81-1030	M4 Hex Screw	2
110	42-70-0076	Belt Hook Kit	1
117	43-40-0064	Magazine Assembly	1
125	50-55-3560	Contractor Bag	1
126	12-20-0571	Service Nameplate (Not shown)	1