

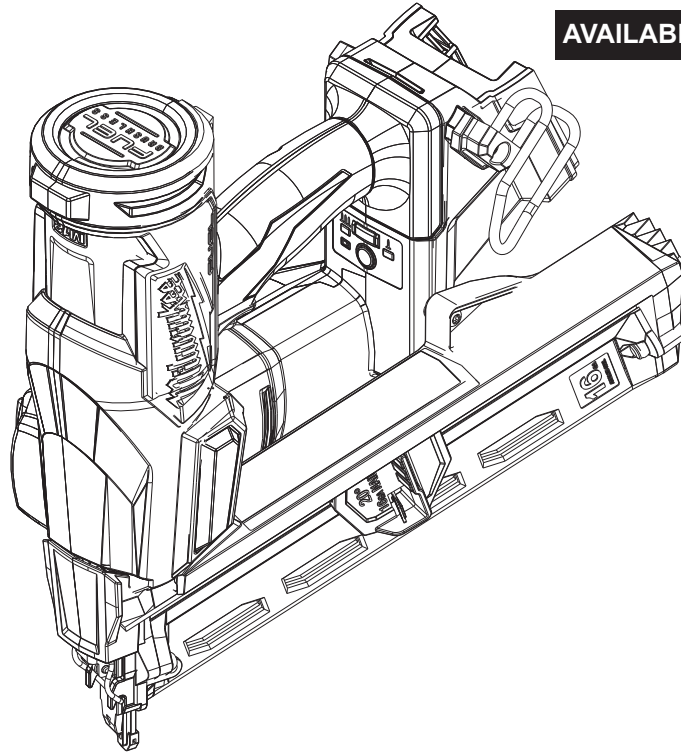


SERVICE PARTS LIST

BULLETIN NO.
54-00-2841

SPECIFY CATALOG NO. AND SERIAL NO. WHEN ORDERING PARTS				REVISED BULLETIN	DATE
M18™ FUEL™ 16 GA. Angled Finishing Nailer					Dec. 2024
CATALOG NUMBER	2841-20	SERIAL NUMBER	M04A	WIRING INSTRUCTION	

AVAILABLE SERVICE PARTS PAGE 2



Only maintenance, service, repairs, and replacements of parts as defined in the Operator's Manual can be performed by the user.

All other repairs are to **ONLY** be performed by personnel authorized by MILWAUKEE TOOL. Do not attempt to install other parts; this **COULD** void your tool warranty.

For service, parts, or inquiries, contact us:

- Customer Service at 1.800.SAWDUST (1.800.729.3878)
- E-Service tool repair at: www.milwaukeetool.com/e-service
- Find a local authorized MILWAUKEE service location at Milwaukeetool.com
- Find a MILWAUKEE *factory* Service Center Location or MILWAUKEE *factory* Central Repair Center at Milwaukeetool.com. Send the following, posted paid and insured:
 - Your name, address, and phone number
 - Description of the issues
 - Copy of the proof of purchase
 - Tool, charger, and batteries involved with the issues

MILWAUKEE *factory* Central Repair Centers:

MILWAUKEE TOOL
Central Repair
1401 Sycamore Avenue
Greenwood, MS 38930

MILWAUKEE TOOL
Central Repair
2198 Southtech Drive
Greenwood, IN 46143

00 0 **EXAMPLE:**
Component Parts (Small #) Are Included
When Ordering The Assembly (Large #).

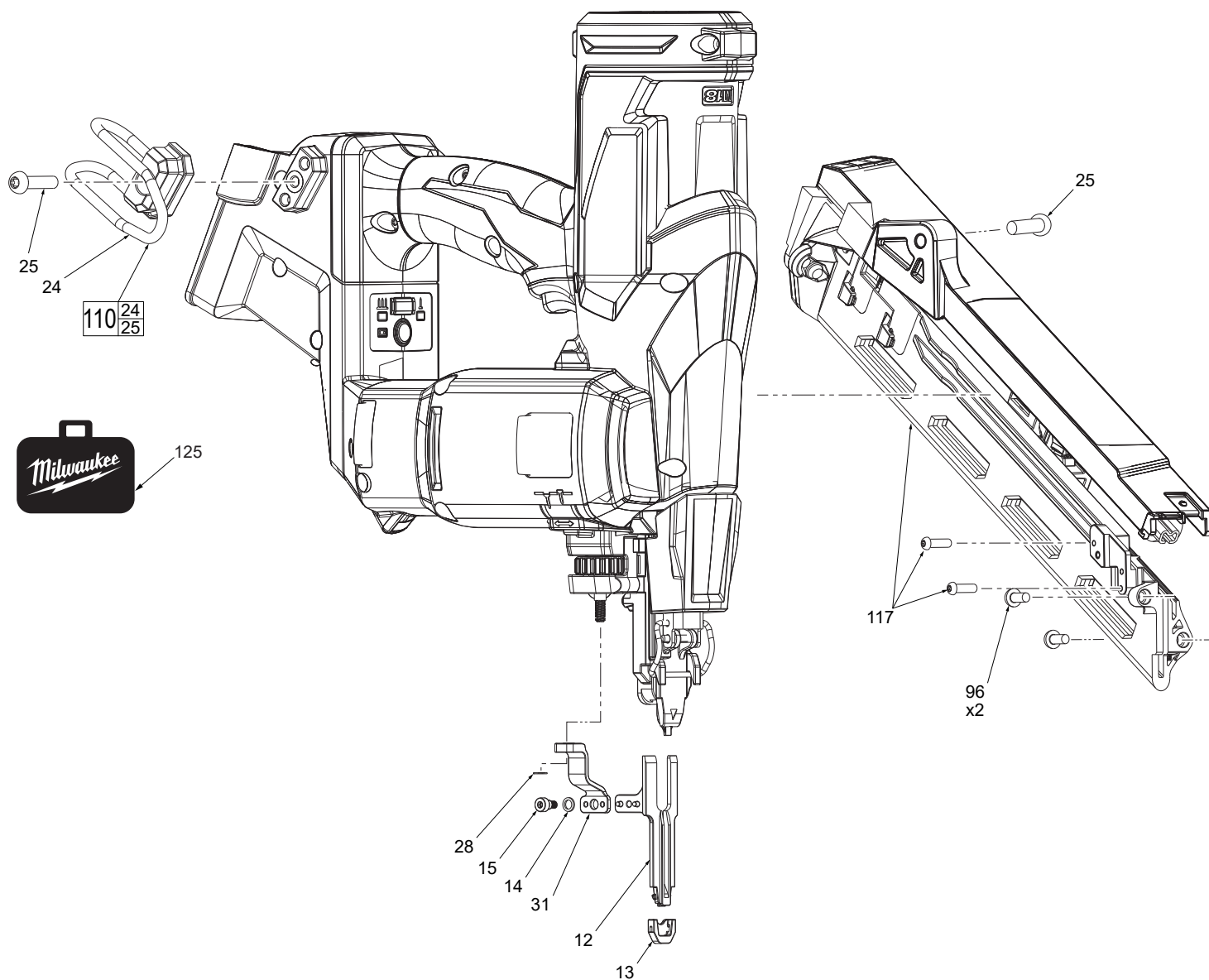


FIG.	PART NO.	DESCRIPTION OF PART	NO. REQ.
12	42-36-0069	WCB	1
13	14-46-0341	WCB Tip	2
14	45-88-0251	Washer	1
15	05-89-0100	Shoulder Screw	1
24	-----	Belt Hook	1
25	05-81-0707	M5 x 0.8mm PH T-25 Screw	2
28	42-24-0026	C Clip	1
31	14-30-0063	WCB Linkage	1
96	05-81-1030	M4 Hex Screw	2
110	42-70-0076	Belt Hook Kit	1
117	43-40-0047	Magazine Assembly	1
125	50-55-3560	Contractor Bag	1
126	12-20-0571	Service Nameplate (Not shown)	1