

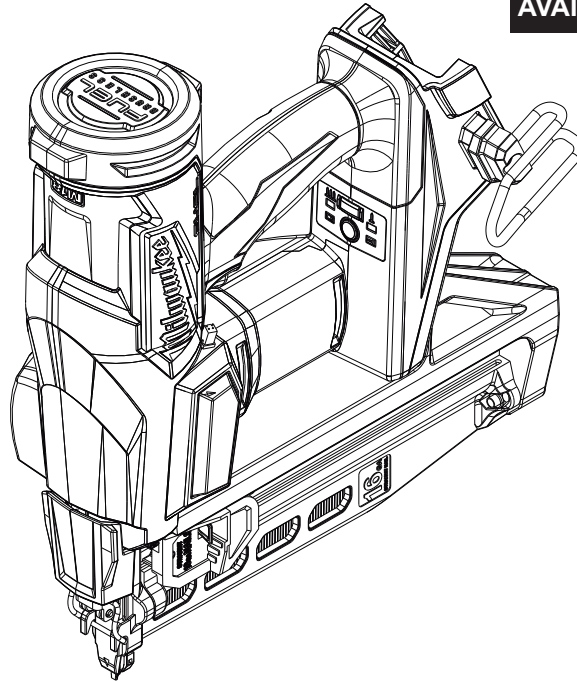


SERVICE PARTS LIST

BULLETIN NO.
54-00-3020

SPECIFY CATALOG NO. AND SERIAL NO. WHEN ORDERING PARTS				REVISED BULLETIN	DATE
M18 FUEL™ 16 GA. Straight Finishing Nailer					Sept. 2025
CATALOG NO.	3020-20	SERIAL NO.	N69A	WIRING INSTRUCTION	

AVAILABLE SERVICE PARTS PAGE 2



Only maintenance, service, repairs, and replacements of parts as defined in the Operator's Manual can be performed by the user.

All other repairs are to ONLY be performed by personnel authorized by MILWAUKEE TOOL. Do not attempt to install other parts; this COULD void your tool warranty.

For service, parts, or inquiries, contact us:

- Customer Service at 1.800.SAWDUST (1.800.729.3878)
- E-Service tool repair at: www.milwaukeetool.com/e-service
- Find a local authorized MILWAUKEE service location at Milwaukeetool.com
- Find a MILWAUKEE factory Service Center Location or MILWAUKEE factory Central Repair Center at Milwaukeetool.com. Send the following, prepaid and insured:
 - Your name, address, and phone number
 - Description of the issues
 - Copy of the proof of purchase
 - Tool, charger, and batteries involved with the issues

MILWAUKEE factory Central Repair Centers:

MILWAUKEE TOOL
Central Repair
1401 Sycamore Avenue
Greenwood, MS 38930

MILWAUKEE TOOL
Central Repair
2198 Southtech Drive
Greenwood, IN 46143

AVAILABLE SERVICE PARTS

EXAMPLE:
Component Parts (Small #) Are Included
When Ordering The Assembly (Large #).

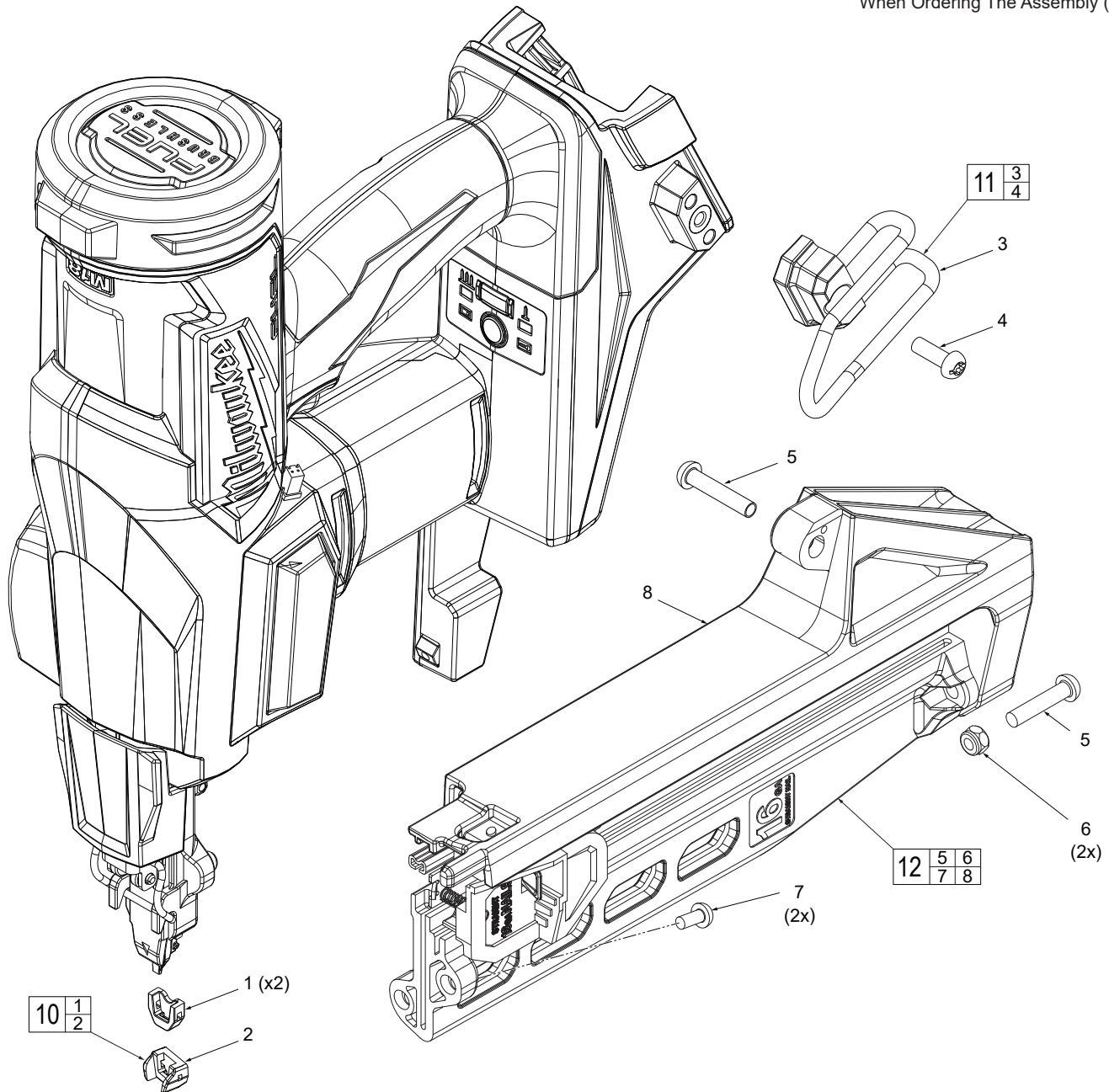


FIG.	PART NO.	DESCRIPTION OF PART	NO. REQ.
1	14-46-0341	WCB Tip	2
2	-----	Wing WCB Tip	1
3	-----	Belt Hook	1
4	-----	M5 PH T25 Screw	1
5	-----	M5 x 24mm Pan Hd. T-25 Machine Screw	2
6	05-55-0022	Nylon Insert Nut	2
7	05-81-1030	M4 Hex Screw	2
8	-----	Magazine	1
10	42-38-0126	No Mar Pad Kit	1
11	42-70-0021	Belt Hook Kit	1
12	43-40-0116	Magazine Assembly	1