



SERVICE PARTS LIST

BULLETIN NO.
54-02-0155

SPECIFY CATALOG NO. AND SERIAL NO. WHEN ORDERING PARTS			REVISED BULLETIN	DATE
1/2 TON CHAIN HOISTS				July 2010
CATALOG NOS. 9667-20, 9668-20 and 9669-20	STARTING SERIAL NO.	ND-B	WIRING INSTRUCTION N/A	

EXAMPLE:
Component Parts
(Small #) Are Included
When Ordering The
Assembly (Large #).

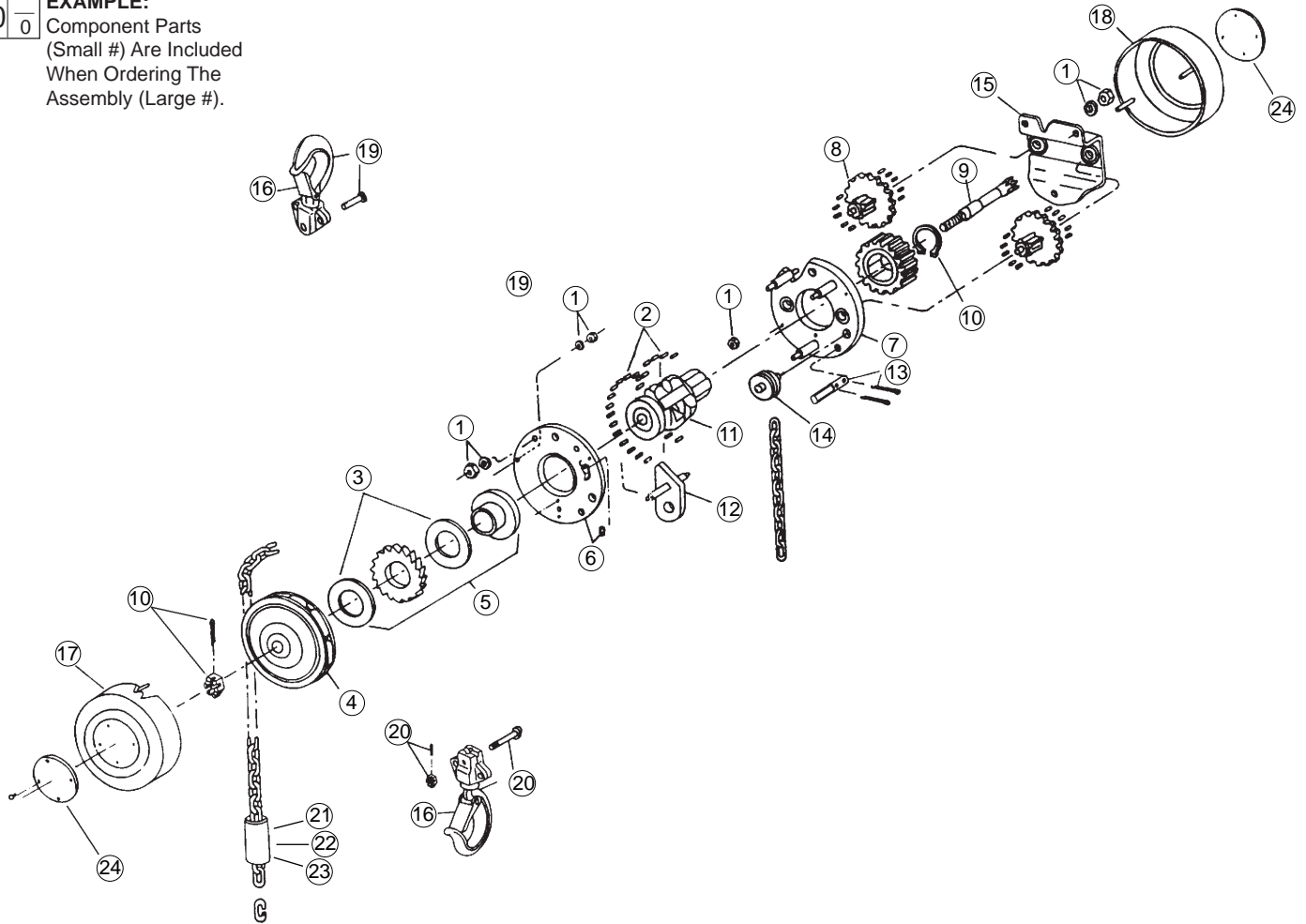


FIG.	PART NO.	DESCRIPTION OF PART	QTY	FIG.	PART NO.	DESCRIPTION OF PART	QTY
1	14-47-0845	Main Hardware Kit	(1)	13	44-60-1630	Loose End Pin Kit (1/2 Ton)	(1)
2	14-47-0850	Liftwheel Roller Kit	(1)	14	43-56-0585	Chain Guide Roller	(1)
3	45-88-8846	Washer-Friction	(2)	15	14-47-0935	Gear Cage w/Bushing	(1)
4	45-94-0435	Handwheel (1/2 Ton)	(1)	16	14-47-0940	Latch Kit (1/2 Ton)	(2)
5	14-47-0920	Brake Set	(1)	17	42-92-1280	Handwheel Cover w/Studs	(1)
6	44-66-6189	Handwheel Side Plate (1/2 Ton)	(1)	18	42-92-1285	Gear Cover w/Studs	(1)
7	44-66-6190	Geared Side Plate (1/2 Ton)	(1)	19	14-47-0930	Upper Hook Kit (1/2 Ton)	(1)
8	32-60-2670	Gear Set (1/2 Ton)	(1)	20	14-36-0245	Lower Hook Kit (1/2 Ton)	(1)
9	36-66-9688	Pinion Shaft (1/2 Ton)	(1)	21	10-15-1520	Warning Tube (English)	(1)
10	14-47-0925	Pinion & Liftwheel Hardware Kit	(1)	22	10-15-1525	Warning Tube (Spanish)	(1)
11	45-11-0215	Liftwheel w/Bearing Races	(1)	23	10-15-1530	Warning Tube (French)	(1)
12	44-77-0125	Stripper (1/2 Ton)	(1)	24	12-20-9667	Service Nameplate Kit (1/2 Ton)	(1)