



# SERVICE PARTS LIST

**BULLETIN NO.**  
**54-05-5325**

SPECIFY CATALOG NO. AND SERIAL NO. WHEN ORDERING PARTS		REVISED BULLETIN	DATE
<b>Dry Coring Attachment</b>			Nov. 2019
<b>CATALOG NO.</b>	<b>5319-DE</b>	WIRING INSTRUCTION	
	STARTING SERIAL NO.		

**EXAMPLE:**  

00	0
----	---

 Component Parts (Small #)  
 Are Included When Ordering  
 The Assembly (Large #).

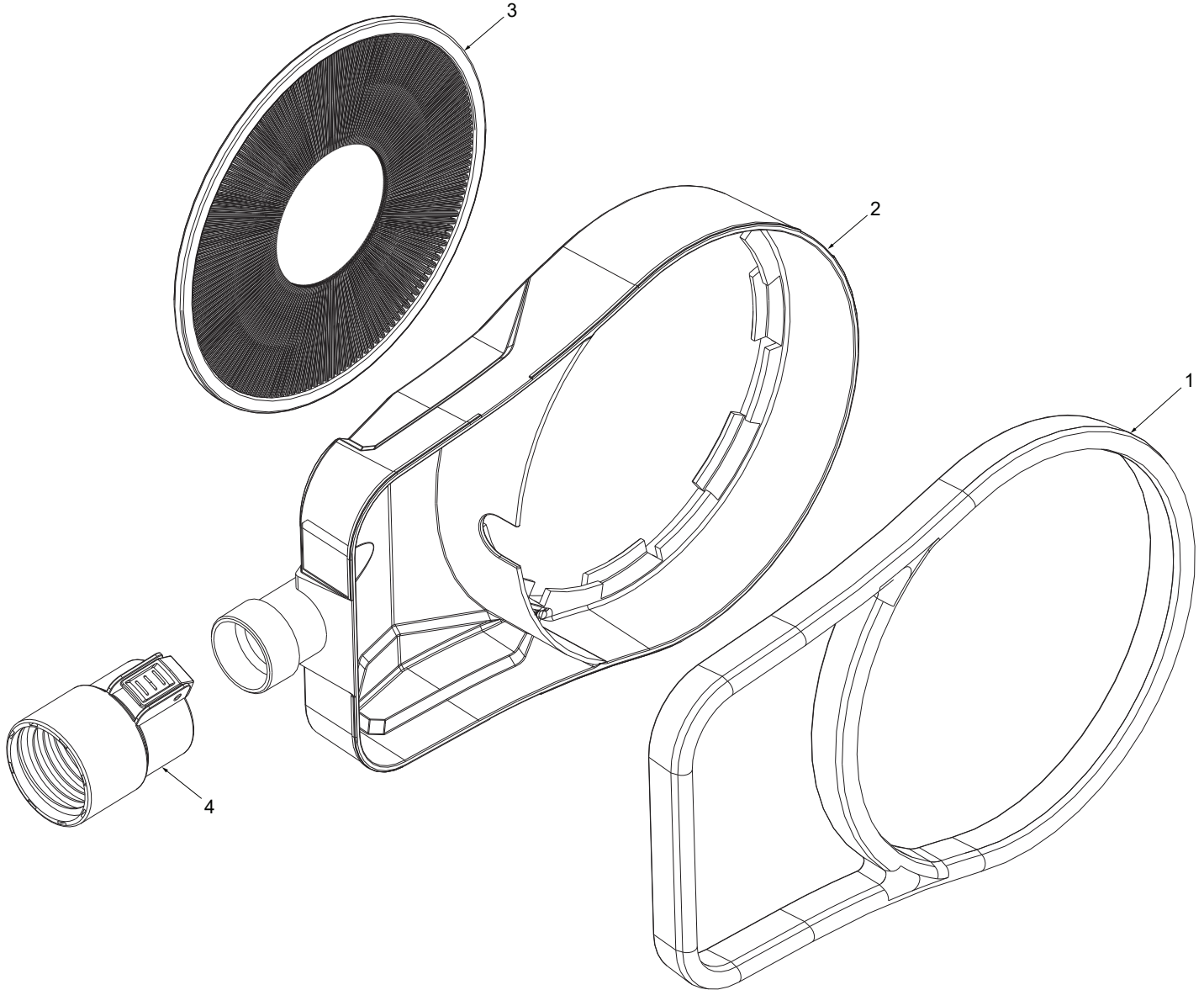


FIG.	PART NO.	DESCRIPTION OF PART	NO. REQ.
1	-----	Rubber Gasket	(1)
2	-----	Attachment Body	(1)
3	43-31-0018	Brush Ring	(1)
4	49-90-1959	Hose Clip Adaptor	(1)
5	12-25-0327	Nameplate (Not Shown)	(1)

**FIG. NOTES**  
 5 A clean, dry surface is essential for proper performance for any adhesive system. The area intended for application of any adhesive label or nameplate must be prepared by cleaning with isopropyl alcohol. The solvent is to be applied with a clean, lint free applicator and the surface allowed to dry before applying the label or nameplate.