



SERVICE PARTS LIST

BULLETIN NO.
54-06-1105

SPECIFY CATALOG NO. AND SERIAL NO. WHEN ORDERING PARTS				REVISED BULLETIN	DATE
PENLIGHT					Sep. 2017
CATALOG NO.	2105	STARTING SERIAL NO.	J13A	WIRING INSTRUCTION	

00 0 **EXAMPLE:**
Component Parts (Small #)
Are Included When Ordering
The Assembly (Large #).

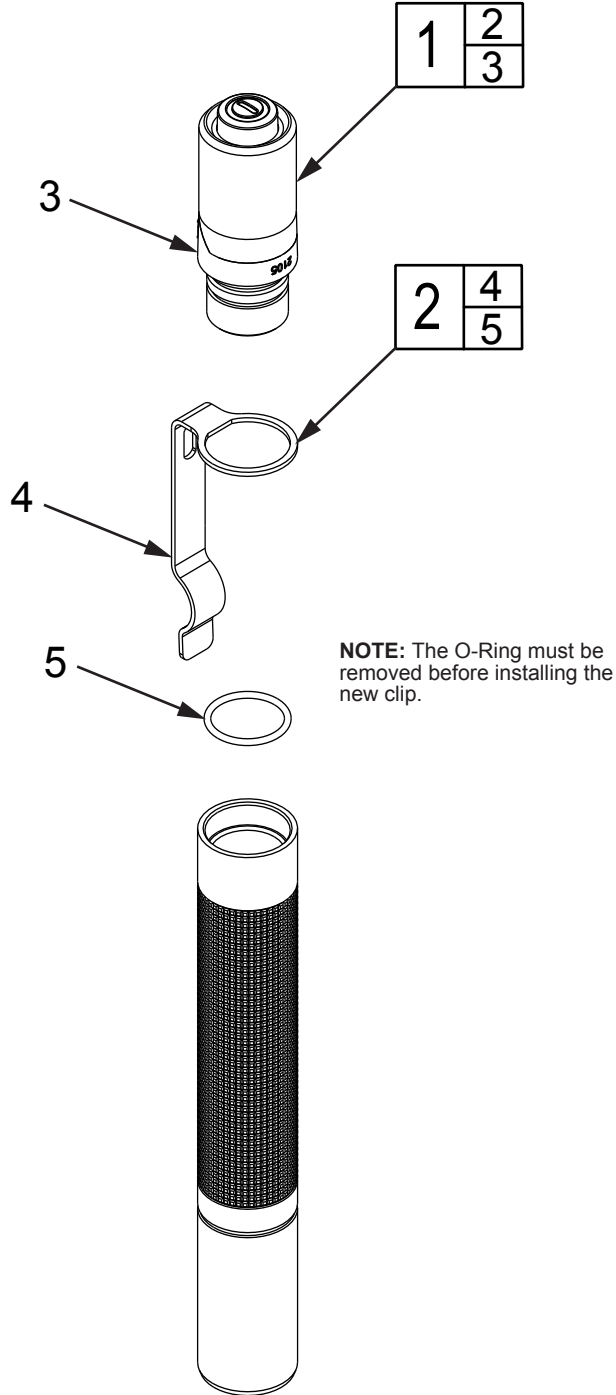


FIG.	PART NO.	DESCRIPTION OF PART	NO. REQ.	FIG.	PART NO.	DESCRIPTION OF PART	NO. REQ.
1	42-52-0275	End Cap Assembly	(1)	3	-----	End Cap	(1)
2	42-70-0175	Clip w/ O-Ring	(1)	4	-----	Clip	(1)
				5	-----	O-Ring	(1)