



SERVICE PARTS LIST

BULLETIN NO.
54-06-2810

SPECIFY CATALOG NO. AND SERIAL NO. WHEN ORDERING PARTS		REVISED BULLETIN	DATE
M18™ FUEL™ Mud Mixer			Apr. 2017
CATALOG NO.	2810-20	STARTING SERIAL NO.	H92A
		WIRING INSTRUCTION See Reverse Side	

00
0

EXAMPLE:
Component Parts (Small #)
Are Included When Ordering
The Assembly (Large #).

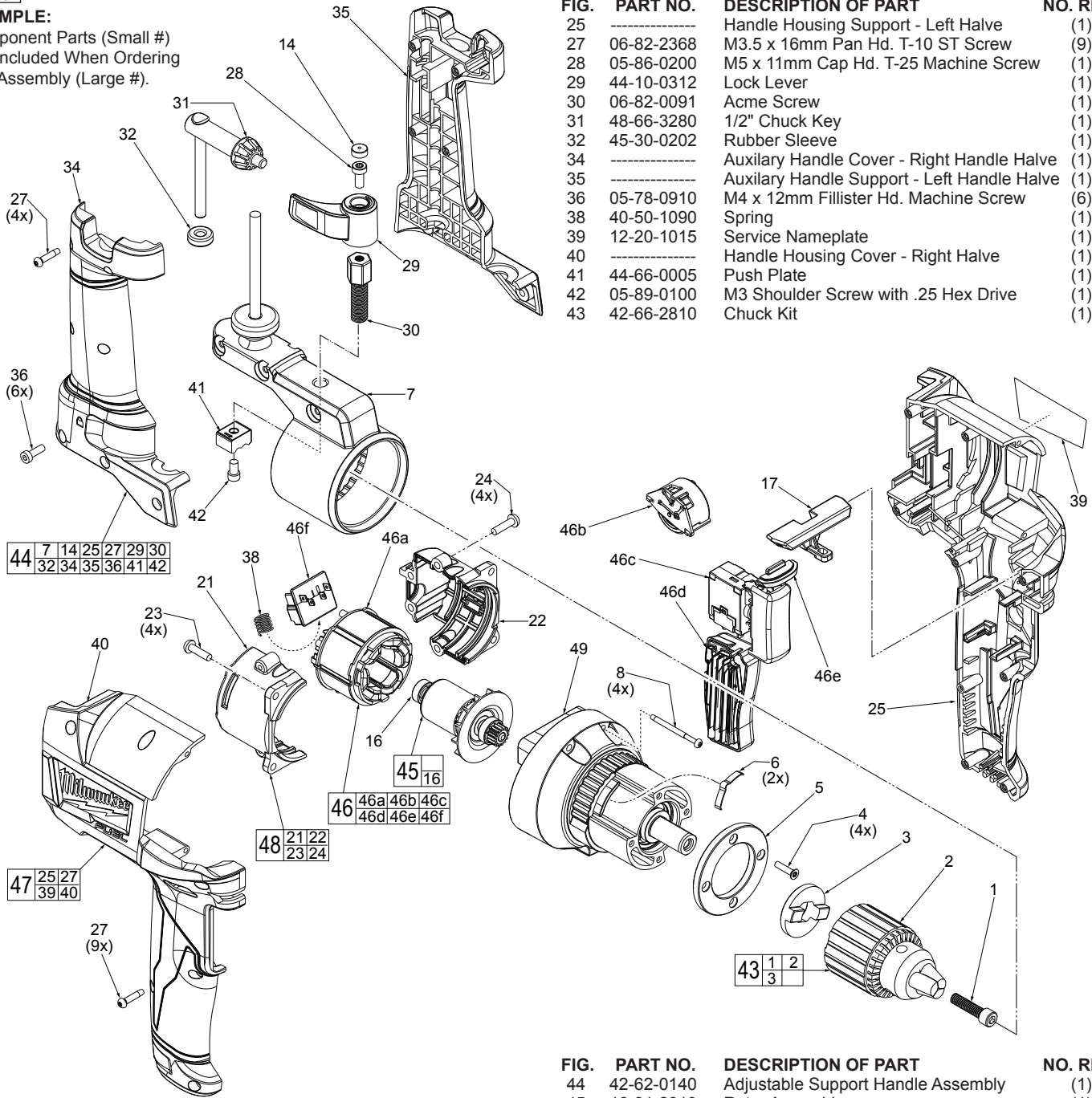


FIG.	PART NO.	DESCRIPTION OF PART	NO. REQ.
1	06-75-3155	1/4-20 x 1 Socket Hd. Screw LH Thread	(1)
2	-----	1/2" Keyed Chuck	(1)
3	28-53-0117	Chuck Hub	(1)
4	05-80-0015	M3 x 15mm Flat Hd. T-15 Machine Screw	(4)
5	44-66-0054	Collar Mounting Plate	(1)
6	40-50-0801	Detent Spring	(2)
7	-----	Auxiliary Handle Collar with Support Rod	(1)
8	06-81-5376	M4 x 32 Pan Hd. ST T-20 Screw	(4)
14	42-52-2810	Screw Cap	(1)
16	02-04-0033	Ball Bearing	(1)
17	45-24-0078	Forward/Reverse Shuttle	(1)
21	-----	Motor Insulator-Right	(1)
22	-----	Motor Insulator-Left	(1)
23	05-88-1210	M4 x 14mm Pan Hd. T-20 Machine Screw	(4)
24	06-82-3006	M4 x 18mm Pan Hd. T-20 ST Screw	(4)

FIG.	PART NO.	DESCRIPTION OF PART	NO. REQ.
25	-----	Handle Housing Support - Left Halve	(1)
27	06-82-2368	M3.5 x 16mm Pan Hd. T-10 ST Screw	(9)
28	05-86-0200	M5 x 11mm Cap Hd. T-25 Machine Screw	(1)
29	44-10-0312	Lock Lever	(1)
30	06-82-0091	Acme Screw	(1)
31	48-66-3280	1/2" Chuck Key	(1)
32	45-30-0202	Rubber Sleeve	(1)
34	-----	Auxiliary Handle Cover - Right Handle Halve	(1)
35	-----	Auxiliary Handle Support - Left Handle Halve	(1)
36	05-78-0910	M4 x 12mm Fillister Hd. Machine Screw	(6)
38	40-50-1090	Spring	(1)
39	12-20-1015	Service Nameplate	(1)
40	-----	Handle Housing Cover - Right Halve	(1)
41	44-66-0005	Push Plate	(1)
42	05-89-0100	M3 Shoulder Screw with .25 Hex Drive	(1)
43	42-66-2810	Chuck Kit	(1)

FIG.	PART NO.	DESCRIPTION OF PART	NO. REQ.
44	42-62-0140	Adjustable Support Handle Assembly	(1)
45	16-01-2810	Rotor Assembly	(1)
46	14-20-2810	Electronics Assembly	(1)
46a	-----	Stator with PCBA	(1)
46b	-----	Speed Dial Module	(1)
46c	-----	On-Off Switch	(1)
46d	-----	Main PCBA	(1)
46e	-----	LED Assembly	(1)
46f	-----	Battery Terminal Block Assembly	(1)
47	31-44-0184	Housing Kit	(1)
48	31-50-0241	Insulator Housing Kit	(1)
49	14-29-2810	Gear Box Assembly	(1)
50	42-55-2743	Contractor Bag	(1)

Rotor (45) and Stator (46a) are captured in the Insulator Housing Halves (48).

Battery Terminal Block (46f) is to be placed firmly and squarely in rear cavity of Left Housing Halve (25). Be sure wires are tucked down into the wire traps.

Speed Dial Module (46b) is to be placed firmly and squarely in corresponding cavity of Left Housing Halve (25). Be sure wires are tucked down into the wire traps.

Place all wires shown in channel behind the On-Off Switch (46c). Be sure to prevent wire pinching in handle halves by tucking all wires down into channel.

Be sure the On-Off Switch (46c) is placed firmly and squarely in the switch cavity.

Be sure the Main PCBA (46d) is placed firmly and squarely in the bottom of the Left Housing Halve.

AS AN AID TO REASSEMBLY, TAKE NOTICE OF WIRE ROUTING AND POSITION IN WIRE GUIDES AND TRAPS WHILE DISMANTLING TOOL.

BE SURE THAT ALL COMPONENTS OF THE ELECTRONICS KIT ARE SEATED FIRMLY AND SQUARELY IN THE HOUSING RECESSES.

AVOID PINCHED WIRES, BE SURE THAT ALL WIRES AND SLEEVES ARE PRESSED COMPLETELY DOWN IN WIRE GUIDES AND TRAPS.

PRIOR TO INSTALLING THE HOUSING COVER ONTO THE HOUSING SUPPORT, BE SURE THAT THERE ARE NO INTERFERENCES.

To remove the Right Handle Halve (40), the two T-20 Screws (8) on the right side of Gear Box (9) must be completely removed. The two T-20 Screws on the left side of the Gear Box should be loosened, then remove nine T-10 Screw (27) from the side of Right Handle. Carefully remove the Handle Housing Cover - Right Halve.

Route and place LED and wires as shown.

