



SERVICE PARTS LIST

BULLETIN NO.
54-07-2405

SPECIFY CATALOG NO. AND SERIAL NO. WHEN ORDERING PARTS		DATE
M12™ HEATED JACKET		Feb. 2015
CAT. NO.	2340S, 2340M, 2340L, 2340XL, 23402X, 23403X	(RED-Multizone)
	2390S, 2390M, 2390L, 2390XL, 23902X, 23903X	(RED-Multizone)
	2342S, 2342M, 2342L, 2342XL, 23422X, 23423X	(CAMO-Multizone)
	2392S, 2392M, 2392L, 2392XL, 23922X, 23923X	(CAMO-Multizone)
	2344S, 2344M, 2344L, 2344XL, 23442X, 23443X	(BLACK-Multizone)
	2394S, 2394M, 2394L, 2394XL, 23942X, 23943X	(BLACK-Multizone)
	2346M, 2346L, 2346XL, 23462X, 23463X, 23464X	(HIGH VISIBILITY)
	2334S, 2334M, 2334L, 2334XL, 23342X, 23343X	(BLACK-Basic, Canada)
	2337M, 2337L, 2337XL, 23372X, 23373X, 23374X	(HIGH VISIBILITY-Canada)
	2339S, 2339M, 2339L, 2339XL	(LADIES BLACK)

Red Multizone Jacket Only-

- 2340S M12 Heated Jacket - Small
- 2340M M12 Heated Jacket - Medium
- 2340L M12 Heated Jacket - Large
- 2340XL M12 Heated Jacket - Extra Large
- 23402X M12 Heated Jacket - Extra Large (2X)
- 23403X M12 Heated Jacket - Extra Large (3X)

Red Multizone Jacket Only-

- 2390S M12 Heated Jacket - Small
- 2390M M12 Heated Jacket - Medium
- 2390L M12 Heated Jacket - Large
- 2390XL M12 Heated Jacket - Extra Large
- 23902X M12 Heated Jacket - Extra Large (2X)
- 23903X M12 Heated Jacket - Extra Large (3X)

Camouflage Multizone Jacket Only-

- 2342S M12 Heated Jacket - Small
- 2342M M12 Heated Jacket - Medium
- 2342L M12 Heated Jacket - Large
- 2342XL M12 Heated Jacket - Extra Large
- 23422X M12 Heated Jacket - Extra Large (2X)
- 23423X M12 Heated Jacket - Extra Large (3X)

Camouflage Multizone Jacket Only-

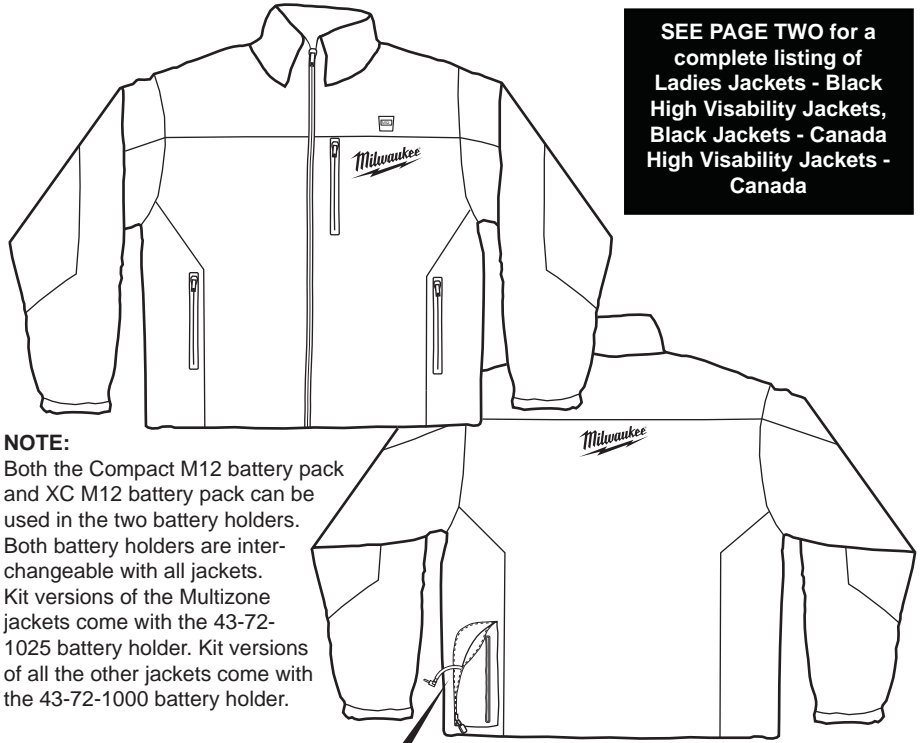
- 2392S M12 Heated Jacket - Small
- 2392M M12 Heated Jacket - Medium
- 2392L M12 Heated Jacket - Large
- 2392XL M12 Heated Jacket - Extra Large
- 23922X M12 Heated Jacket - Extra Large (2X)
- 23923X M12 Heated Jacket - Extra Large (3X)

Black Multizone Jacket Only-

- 2344S M12 Heated Jacket - Small
- 2344M M12 Heated Jacket - Medium
- 2344L M12 Heated Jacket - Large
- 2344XL M12 Heated Jacket - Extra Large
- 23442X M12 Heated Jacket - Extra Large (2X)
- 23443X M12 Heated Jacket - Extra Large (3X)

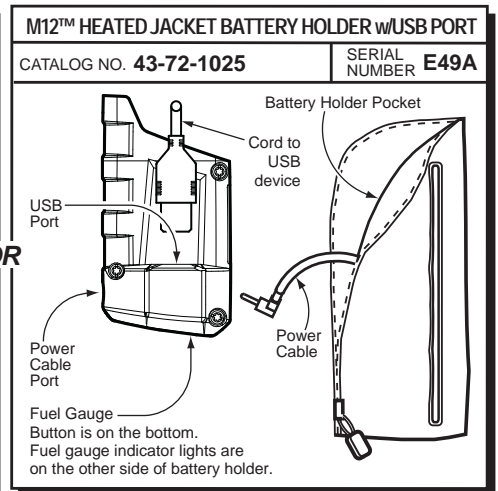
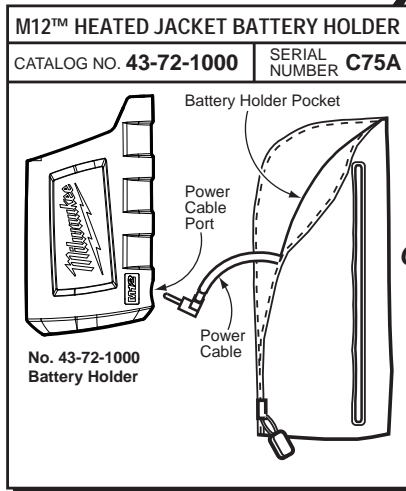
Black Multizone Jacket Only-

- 2394S M12 Heated Jacket - Small
- 2394M M12 Heated Jacket - Medium
- 2394L M12 Heated Jacket - Large
- 2394XL M12 Heated Jacket - Extra Large
- 23942X M12 Heated Jacket - Extra Large (2X)
- 23943X M12 Heated Jacket - Extra Large (3X)



SEE PAGE TWO for a complete listing of Ladies Jackets - Black High Visibility Jackets, Black Jackets - Canada High Visibility Jackets - Canada

NOTE:
Both the Compact M12 battery pack and XC M12 battery pack can be used in the two battery holders. Both battery holders are interchangeable with all jackets. Kit versions of the Multizone jackets come with the 43-72-1025 battery holder. Kit versions of all the other jackets come with the 43-72-1000 battery holder.



43-72-1000 BATTERY HOLDER

FIG.	PART NO.	DESCRIPTION OF PART	NO. REQ.
	143-72-1000	Battery Holder	(1)
	2	12-20-2330 Service Nameplate - Battery Holder	(1)
	3	10-20-2318 Warning Label - Battery Holder	(1)

43-72-1025 BATTERY HOLDER

FIG.	PART NO.	DESCRIPTION OF PART	NO. REQ.
	1	43-72-1025 Battery Holder	(1)
	2	12-20-1025 Service Nameplate - Battery Holder	(1)
	3	10-20-1028 Warning Label - Battery Holder	(1)

49-24-2310 Power Source (Not Illustrated)

FIG.	PART NO.	DESCRIPTION OF PART	NO. REQ.
	1	49-24-2310 Power Source	(1)
	2	12-20-1025 Service Nameplate - Battery Holder	(1)
	3	10-20-1028 Warning Label - Battery Holder	(1)

FIG. 2, 3 NOTES
A clean, dry surface is essential for proper performance for any adhesive system. The area intended for application of any adhesive label or nameplate must be prepared by cleaning with isopropyl alcohol. The solvent is to be applied with a clean, lint free applicator and the surface allowed to dry before applying the label or name plate.



SERVICE PARTS LIST

SPECIFY CATALOG NO. AND SERIAL NO. WHEN ORDERING PARTS		DATE
M12™ HEATED JACKET		
CAT. NO.	2340S, 2340M, 2340L, 2340XL, 23402X, 23403X 2390S, 2390M, 2390L, 2390XL, 23902X, 23903X 2342S, 2342M, 2342L, 2342XL, 23422X, 23423X 2392S, 2392M, 2392L, 2392XL, 23922X, 23923X 2344S, 2344M, 2344L, 2344XL, 23442X, 23443X 2394S, 2394M, 2394L, 2394XL, 23942X, 23943X 2346M, 2346L, 2346XL, 23462X, 23463X, 23464X 2347M, 2347L, 2347XL, 23472X, 23473X, 23474X 2334S, 2334M, 2334L, 2334XL, 23342X, 23343X 2337M, 2337L, 2337XL, 23372X, 23373X, 23374X 2339S, 2339M, 2339L, 2339XL 2399S, 2399M,	(RED-Multizone) (RED-Multizone) (CAMO-Multizone) (CAMO-Multizone) (BLACK-Multizone) (BLACK-Multizone) (HIGH VISIBILITY) (HIGH VISIBILITY-Kit) (BLACK-Basic, Canada) (HIGH VISIBILITY-Canada) (LADIES BLACK) (LADIES BLACK-Kit)

Ladies Black Jacket Only-

- 2339S M12 Heated Jacket - Small
- 2339M M12 Heated Jacket - Medium
- 2339L M12 Heated Jacket - Large
- 2339XL M12 Heated Jacket - Extra Large

Ladies Black Jacket (Kit)-

- 2399S M12 Heated Jacket - Small
- 2399M M12 Heated Jacket - Medium
- 2399L M12 Heated Jacket - Large
- 2399XL M12 Heated Jacket - Extra Large

High Visibility Jacket Only-

- 2346M M12 Heated Jacket - Medium
- 2346L M12 Heated Jacket - Large
- 2346XL M12 Heated Jacket - Extra Large
- 23462X M12 Heated Jacket - Extra Large (2X)
- 23463X M12 Heated Jacket - Extra Large (3X)
- 23464X M12 Heated Jacket - Extra Large (4X)

High Visibility Jacket (Kit)-

- 2347M M12 Heated Jacket - Medium
- 2347L M12 Heated Jacket - Large
- 2347XL M12 Heated Jacket - Extra Large
- 23472X M12 Heated Jacket - Extra Large (2X)
- 23473X M12 Heated Jacket - Extra Large (3X)
- 23474X M12 Heated Jacket - Extra Large (4X)

Black Jacket Only (Basic, Canada)-

- 2334S M12 Heated Jacket - Small
- 2334M M12 Heated Jacket - Medium
- 2334L M12 Heated Jacket - Large
- 2334XL M12 Heated Jacket - Extra Large
- 23342X M12 Heated Jacket - Extra Large (2X)
- 23343X M12 Heated Jacket - Extra Large (3X)

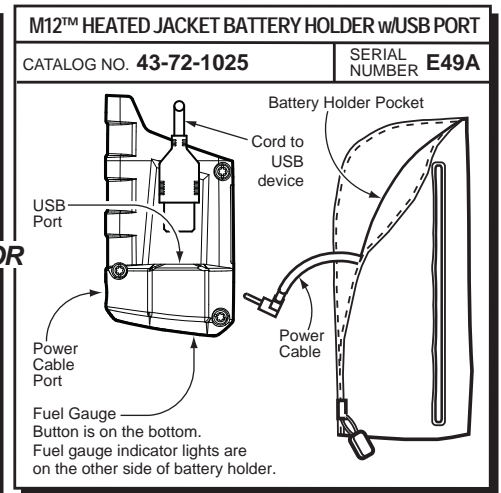
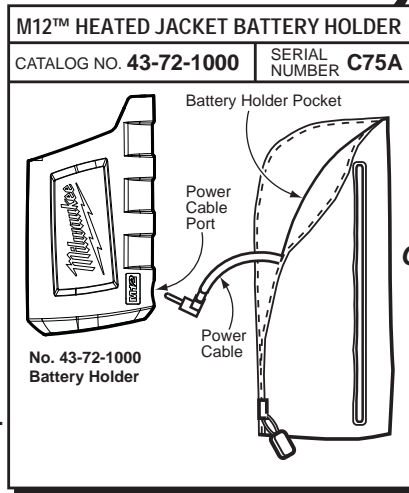
High Visibility Jacket Only (Canada)-

- 2337M M12 Heated Jacket - Medium
- 2337L M12 Heated Jacket - Large
- 2337XL M12 Heated Jacket - Extra Large
- 23372X M12 Heated Jacket - Extra Large (2X)
- 23373X M12 Heated Jacket - Extra Large (3X)
- 23374X M12 Heated Jacket - Extra Large (4X)



SEE PAGE ONE for a complete listing of Multizone Jackets

NOTE:
Both the Compact M12 battery pack and XC M12 battery pack can be used in the two battery holders. Both battery holders are interchangeable with all jackets. Kit versions of the Multizone jackets come with the 43-72-1025 battery holder. Kit versions of all the other jackets come with the 43-72-1000 battery holder.



43-72-1000 BATTERY HOLDER

FIG.	PART NO.	DESCRIPTION OF PART	NO. REQ.
	143-72-1000	Battery Holder	(1)
	2	12-20-2330 Service Nameplate - Battery Holder	(1)
	3	10-20-2318 Warning Label - Battery Holder	(1)

43-72-1025 BATTERY HOLDER

FIG.	PART NO.	DESCRIPTION OF PART	NO. REQ.
	1	43-72-1025 Battery Holder	(1)
	2	12-20-1025 Service Nameplate - Battery Holder	(1)
	3	10-20-1028 Warning Label - Battery Holder	(1)

49-24-2310 Power Source (Not Illustrated)

FIG.	PART NO.	DESCRIPTION OF PART	NO. REQ.
	1	49-24-2310 Power Source	(1)
	2	12-20-1025 Service Nameplate - Battery Holder	(1)
	3	10-20-1028 Warning Label - Battery Holder	(1)

FIG. 2, 3

NOTES

A clean, dry surface is essential for proper performance for any adhesive system. The area intended for application of any adhesive label or nameplate must be prepared by cleaning with isopropyl alcohol. The solvent is to be applied with a clean, lint free applicator and the surface allowed to dry before applying the label or name plate.