



SERVICE PARTS LIST

BULLETIN NO.
54-07-3100

SPECIFY CATALOG NO. AND SERIAL NO. WHEN ORDERING PARTS		REVISED BULLETIN	DATE
M12™ Auto Technician Borescope			April 2023
CATALOG NO.	3150-20	SERIAL NO.	M82A
WIRING INSTRUCTION			

FIG.	PART NO.	DESCRIPTION OF PART	NO. REQ.
1	-----	Front Housing	(1)
2	-----	Silicone Pad	(1)
3	-----	LCD Lens	(1)
4	14-46-1017	Screw 2 x 5	(15)
5	-----	LCD Cushion	(2)
6	-----	LCD	(1)
7	-----	PCB Holder	(1)
8	14-46-1018	Screw 2 x 8	(6)
9	-----	Electronics Assembly	(1)
10	-----	Washer	(7)
11	-----	Head Cover	(1)
12	14-46-1022	Screw 2.6 x 8	(21)
13	-----	Stopper	(1)
14	-----	O-ring	(1)
24	-----	Slider	(1)

EXAMPLE:

00	0
----	---

 Component Parts (Small #)
 Are Included When Ordering
 The Assembly (Large #).

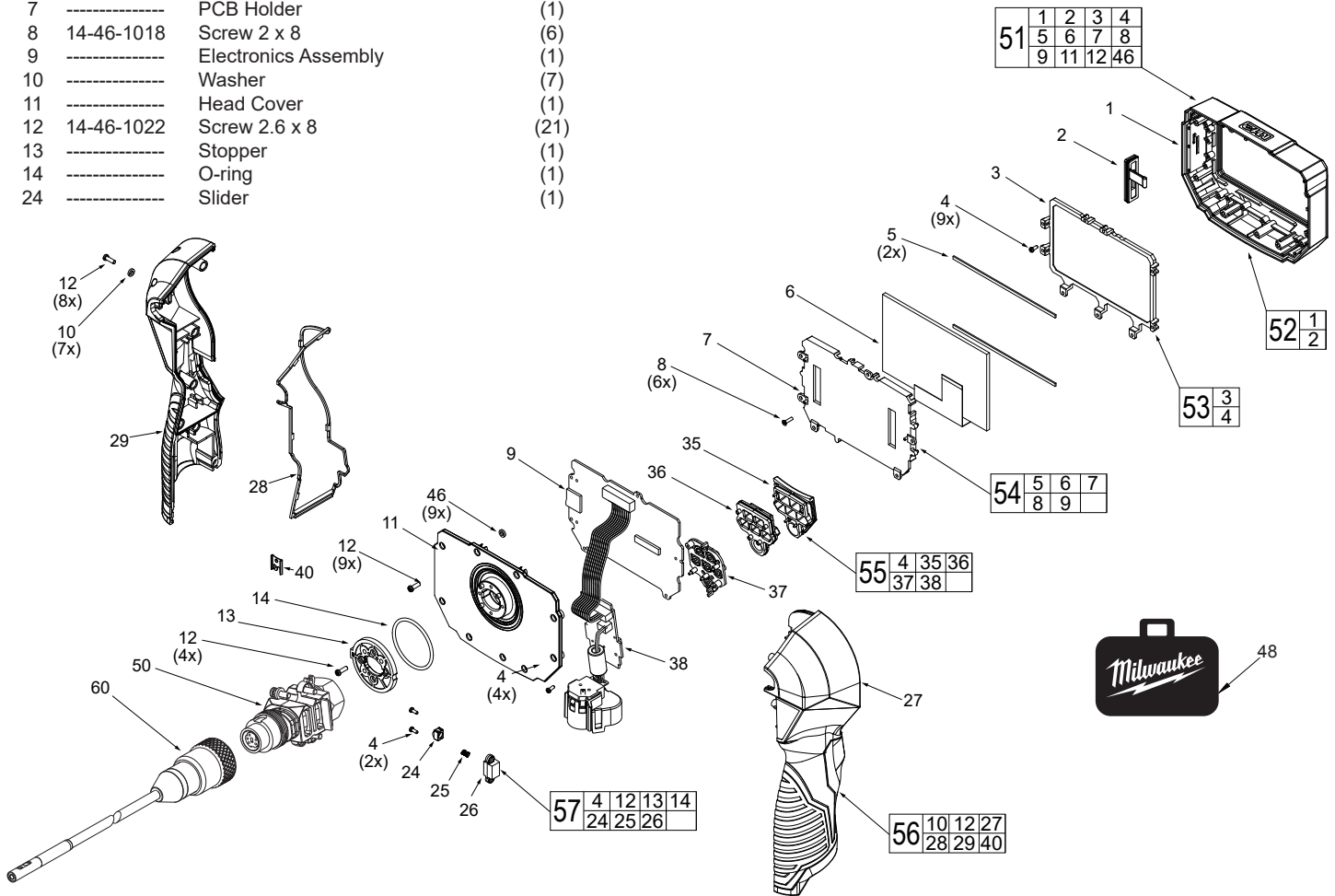


FIG.	PART NO.	DESCRIPTION OF PART	NO. REQ.
25	-----	Spring	(1)
26	-----	Slider Holder	(1)
27	-----	Left Handle Cover	(1)
28	-----	Gasket	(1)
29	-----	Right Handle Cover	(1)
35	14-38-0452	Button Faceplate	(1)
36	-----	Button Holder	(1)
37	-----	PCB	(1)
38	-----	Button PCB	(1)
46	14-46-1021	Rubber Washer	(9)
48	42-55-3150	Carrying Case	(1)

FIG.	PART NO.	DESCRIPTION OF PART	NO. REQ.
50	23-36-0005	Borescope Camera Connector Assy	(1)
51	14-20-0171	Display Assembly	(1)
52	14-38-2003	Front Housing Kit	(1)
53	14-38-2004	Display Lens Kit	(1)
54	14-20-0179	Electronics Kit	(1)
55	14-46-1019	Button Assembly	(1)
56	14-38-0453	Handle Assembly	(1)
57	14-14-0190	Rotation Mechanism Assembly	(1)
59	12-20-3103	Service Nameplate (Not Shown)	(1)
60	48-53-3150	36" Camera Cable (Optional)	(1)