



SERVICE PARTS LIST

BULLETIN NO.
54-10-2700

SPECIFY CATALOG NO. AND SERIAL NO. WHEN ORDERING PARTS		REVISED BULLETIN	DATE
M18 FUEL™ Hole-Hawg™ Right Angle Drills, 1/2"			Oct. 2022
CATALOG NO.	2707-20	STARTING SERIAL NO.	G02A
		WIRING INSTRUCTION SEE PAGE 3	

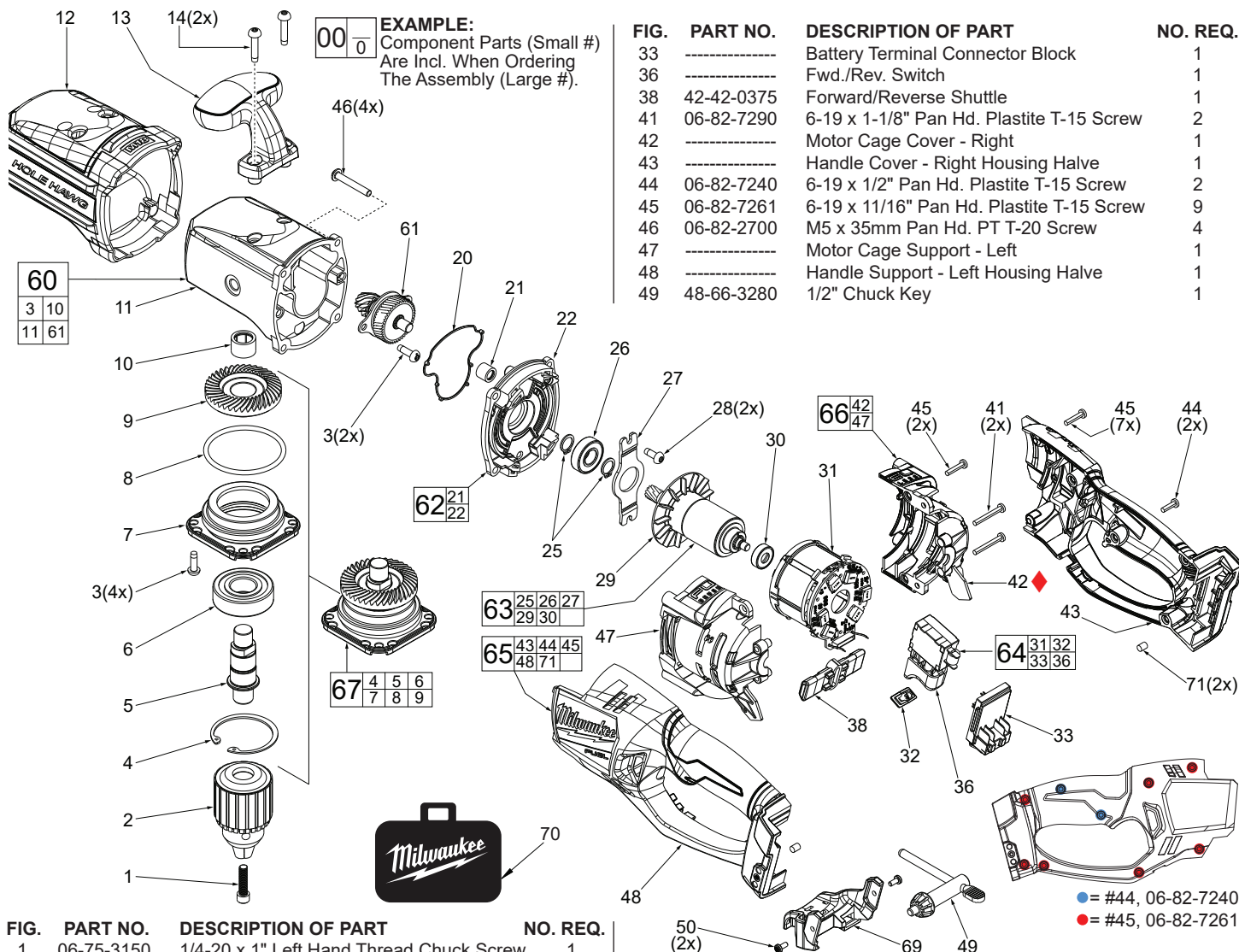
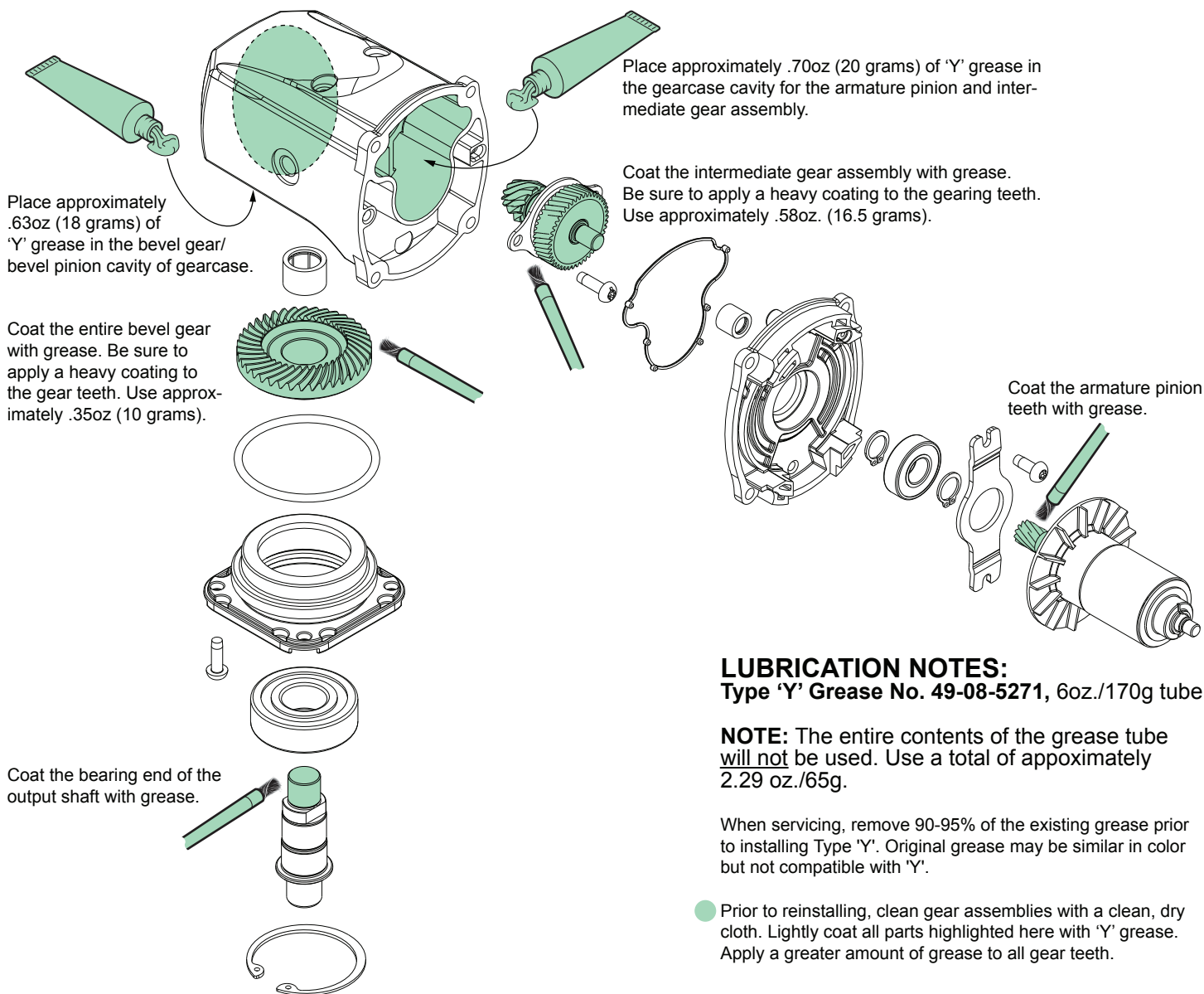


FIG.	PART NO.	DESCRIPTION OF PART	NO. REQ.
1	06-75-3150	1/4-20 x 1" Left Hand Thread Chuck Screw	1
2	48-66-1381	1/2" Chuck	1
3	06-82-5411	10-24 x .625" Pan Hd. Tapt. T-25 Screw	6
4	-----	Retaining Ring	1
5	-----	Output Shaft	1
6	-----	Ball Bearing	1
7	-----	Output Mount Hub	1
8	34-40-2700	O-Ring	1
9	-----	Bevel Gear	1
10	-----	Needle Bearing	1
11	-----	Gearcase	1
12	45-12-0050	Insulated Boot	1
13	31-44-2717	Top Handle	1
14	05-88-9915	M5 x 25mm DG Pan Hd. T-25 Screw	1
20	43-44-0115	Gasket Seal	1
21	-----	Needle Bearing	1
22	-----	Diaphragm	1
23	23-94-2717	High Voltage Wire (Not Shown, see wiring diagram)	1
24	06-82-0165	M2.5 x 0.45 Tapt. Screw (Not shown, see wiring dia.)	1
25	34-60-0610	Snap Ring	2
26	02-04-1204	Ball Bearing	1
27	-----	Pinion Bearing Plate	1
28	06-82-5314	10-24 x .5" Pan Hd. Taptite T-25 Screw	2
29	-----	Rotor	1
30	02-04-0645	Ball Bearing	1
31	-----	Stator Assembly with PCBA	1
32	-----	LED Assembly	1

FIG.	PART NO.	DESCRIPTION OF PART	NO. REQ.
50	06-82-0130	6-32 x 5/16" Pan Hd. T-15 Screw	2
59	12-20-2717	Service Nameplate (Not Shown)	1
60	14-29-8815	Gearcase Assembly	1
61	-----	Intermediate Gear Assembly	1
62	14-13-0030	Diaphragm Assembly	1
63	16-01-2400	Rotor Assembly	1
64	14-20-2717	Electronics Assembly	1
65	31-44-2718	Housing Assembly	1
66	23-16-0285	Motor Cage Assembly	1
67	14-29-0125	Output Assembly	1
69	43-72-0260	Chuck Key Holder Assembly	1
70	48-55-3565	FUEL™ Contractor Bag - Large	1
71	45-30-1000	Rubber Slug	2

IMPORTANT!
To prevent damage to the High Voltage Wire Assembly #23, see service note on page 3 prior to removing the Motor Cage Cover #42.



LUBRICATION NOTES:

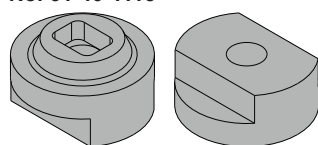
Type 'Y' Grease No. 49-08-5271, 6oz./170g tube

NOTE: The entire contents of the grease tube will not be used. Use a total of approximately 2.29 oz./65g.

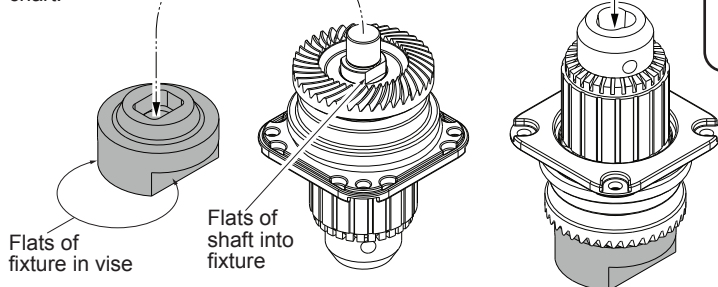
When servicing, remove 90-95% of the existing grease prior to installing Type 'Y'. Original grease may be similar in color but not compatible with 'Y'.

- Prior to reinstalling, clean gear assemblies with a clean, dry cloth. Lightly coat all parts highlighted here with 'Y' grease. Apply a greater amount of grease to all gear teeth.

Chuck Tightening Fixture No. 61-40-1115

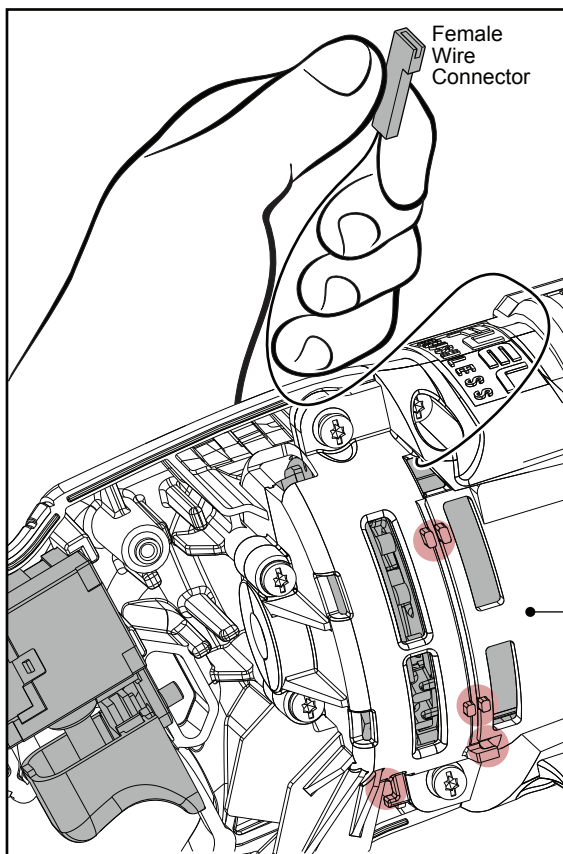


Place a 7/16" or 1/2" Hex Bit Socket in chuck (be sure that most of the hex shaft is inserted and that the shaft is in chuck squarely). Use chuck key to tighten at all three chuck hole positions! Place a torque wrench in socket and tighten to approximately 80-90 ft-lbs. (108.5-122 Nm). Install the chuck screw and torque to the value in chart.



SCREW TORQUE SPECIFICATIONS

FIG.	PART NO.	WHERE USED	SEAT TORQUE	
			(kgf-cm)	(lb-in)
1	06-75-3150	Chuck Screw	103-115	90-100
2	48-66-1381	1/2" Chuck (2707-20 only)	1100-1250	955-1085
3	06-82-5411	Output Assembly	35-50	30.5-43.5
14	05-88-9915	Top Handle	60-65	52-56
24	06-82-0165	High Voltage Terminal	5-9	4.5-7.5
28	06-82-5314	Pinion Bearing Plate	46-58	40-50
41	06-82-7290	Motor Cage Assembly	12-17	10.5-14.5
44	06-82-7240	Handle Cover	12-17	10.5-14.5
45	06-82-7261	Handle Cover/Motor Cage	12-17	10.5-14.5
46	06-82-2700	Gearcase Assembly	38-45	33-39
50	06-82-0130	Chuck Key Holder (2707-20 only)	10-14	9-12
68	42-66-0050	7/16" Hex Chuck (2708-20 only)	1100-1250	955-1085



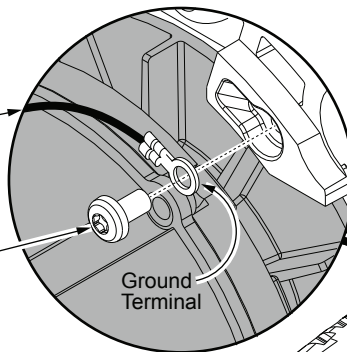
IMPORTANT!

Prior to opening the Motor Cage Cover #42, be sure to disconnect the female wire connector (component of #23 High Voltage Wire Assembly) from the male wire connector that comes from the terminal connector block. Remove the high voltage wire from the wire traps to create the slack needed to properly remove the motor cage cover and access the Rotor and Stator. Failure to do so will result in the wire pulling out of the ground terminal.

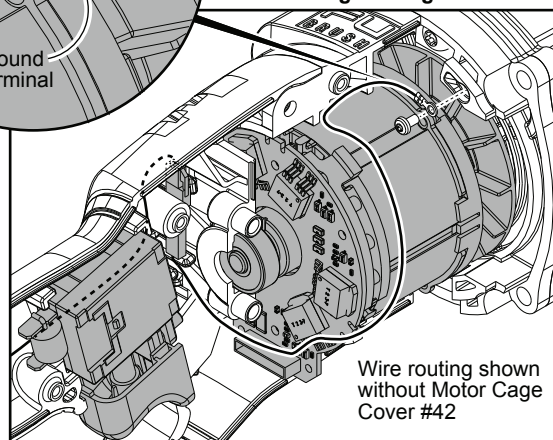
#23
23-94-2717
High Voltage
Wire Assembly

#24
06-82-0165
M2.5 x .45
Taprite Screw

#42
Motor Cage
Cover



High Voltage Wire Detail



● = WIRE TRAPS or GUIDES

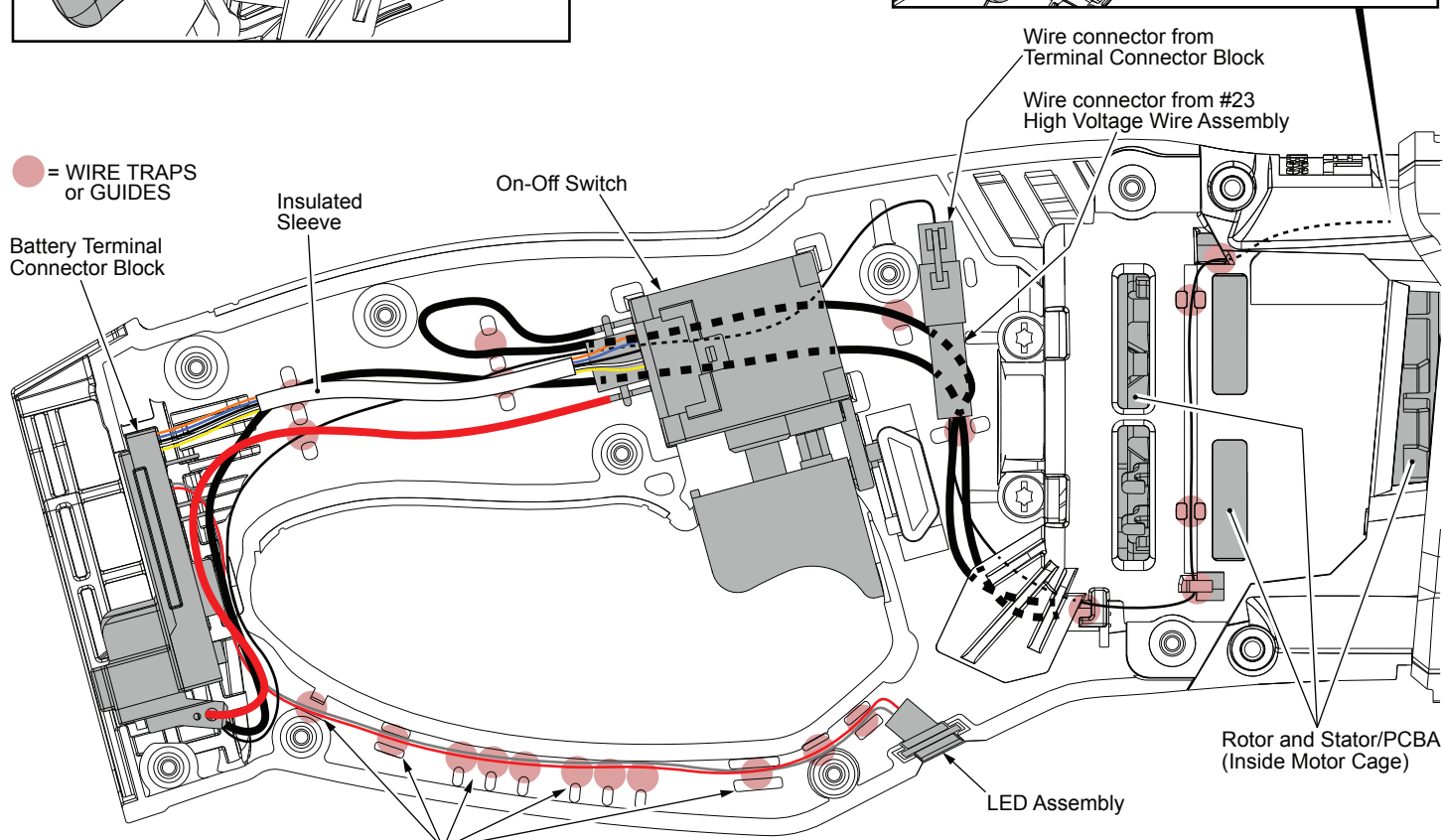
Battery Terminal Connector Block

Insulated Sleeve

On-Off Switch

Wire connector from Terminal Connector Block

Wire connector from #23 High Voltage Wire Assembly



16 Wire Ribbon Cable from Terminal Connector Block to the PCBA is not shown for clarity. Ribbon Cable is routed over the LED Assembly wires using the same traps.

AS AN AID TO REASSEMBLY, TAKE NOTICE OF WIRE ROUTING AND POSITION IN WIRE GUIDES AND TRAPS WHILE DISMANTLING TOOL.

BE SURE THAT ALL COMPONENTS OF THE ELECTRONICS KIT ARE SEATED FIRMLY AND SQUARELY IN THE HANDLE RECESSES.

AVOID PINCHED WIRES, BE SURE THAT ALL WIRES AND SLEEVES ARE PRESSED COMPLETELY DOWN IN WIRE GUIDES AND TRAPS.

PRIOR TO INSTALLING THE HANDLE COVER ONTO THE HANDLE SUPPORT, BE SURE THAT THERE ARE NO INTERFERENCES.