



# SERVICE PARTS LIST

**BULLETIN NO.**  
**54-22-2710**

SPECIFY CATALOG NO. AND SERIAL NO. WHEN ORDERING PARTS		REVISED BULLETIN	DATE
<b>M18 FUEL™ Braking Die Grinder, Slide Switch</b>			Nov. 2025
<b>CATALOG NO.</b>	<b>2939-20</b>	<b>WIRING INSTRUCTION</b>	
	<b>SERIAL NO.</b>	<b>See Page 2</b>	
	<b>N43A</b>		

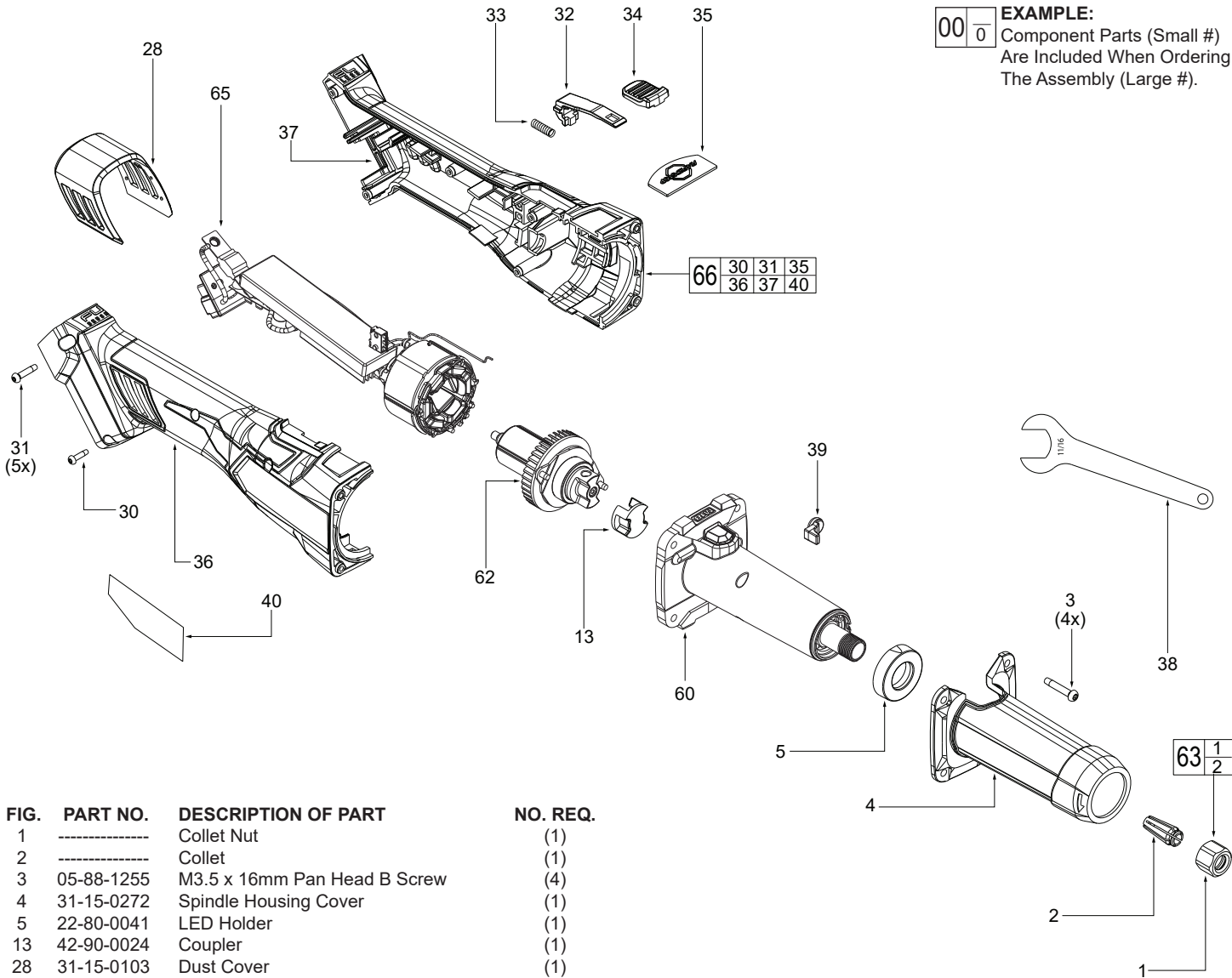
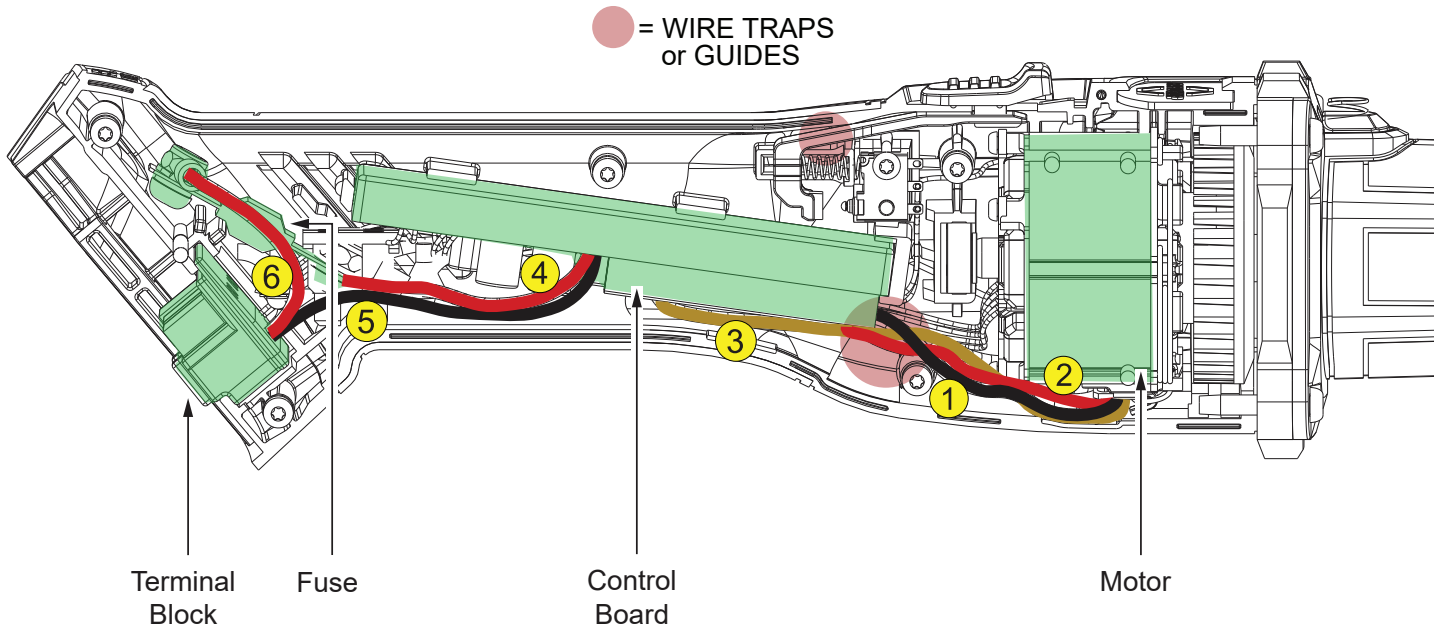


FIG.	PART NO.	DESCRIPTION OF PART	NO. REQ.
1	-----	Collet Nut	(1)
2	-----	Collet	(1)
3	05-88-1255	M3.5 x 16mm Pan Head B Screw	(4)
4	31-15-0272	Spindle Housing Cover	(1)
5	22-80-0041	LED Holder	(1)
13	42-90-0024	Coupler	(1)
28	31-15-0103	Dust Cover	(1)
30	06-82-1087	M3.0 x 1.058 Pan Head Torx T-10 Screw	(1)
31	06-82-2025	M3.5 x 16mm Pan Head B Torx Screw	(5)
32	31-92-0286	Slide Pole	(1)
33	40-50-0217	Spring	(1)
34	42-42-0147	Lock-On Button	(1)
35	43-84-0207	Rapid Stop Plate	(1)
36	-----	Handle Housing Cover	(1)
37	-----	Handle Housing Support	(1)
38	49-96-4090	11/16" Open End Wrench	(1)
39	44-68-0027	Rubber Plug	(1)
40	12-20-0587	Service Nameplate	(1)
60	28-50-0113	Spindle Housing Assembly	(1)
62	16-01-0071	Rotor Assembly	(1)
63	44-40-0091	Collet Nut Assembly	(1)
65	14-20-0402	Electronic Assembly	(1)
66	14-38-0328	Housing Kit	(1)
70	49-92-9000	10PC Die Grinder Kit (Accessory) (Not Shown)	(1)

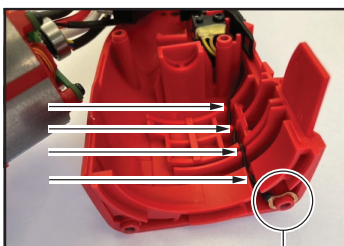
SCREW TORQUE SPECIFICATIONS				
FIG.	PART NO.	WHERE USED	SEAT TORQUE	
			(kgf-cm)	(lb-in)
3	05-88-1255	Spindle Housing Cover	16-20	6.1-17.3
30	06-82-1087	Handle Housing Cover	3.5-4.5	3-3.9
31	06-82-2025	Handle Housing Cover	12.5-15.5	10.8-4.3

# WIRING INSTRUCTIONS

For the sake of clarity, the white wire is represented in gold color in the diagram.



WIRING SPECIFICATIONS			
Wire No.	Wire Color	Length	Terminals, Connectors and 1 or 2 End Wire Preparation
1	Black	74 +4/-0	Connect with Motor and Control Board
2	Red	89 +4/-0	Connect with Motor and Control Board
3	White	104 +4/-0	Connect with Motor and Control Board
4	Red	55 +4/-0	Connect with Fuse and Control Board
5	Black	70 +4/-0	Connect with Terminal Block and Control Board
6	Red	40 +4/-0	Connect with Terminal Block and Fuse



Ground Terminal

Prior to installing the electronics assembly (65) into the housing support (37), place grounding terminal over screw boss as shown. Route ground wire, removing as much slack as possible. Be sure wire is pressed firmly to the back of the wire traps.

Install the electronics assembly as shown. Route wires around screw bosses and into wire traps. Be sure all components are seated squarely and firmly in place. Be sure there is no interference when installing the housing cover (36).



Wire Traps