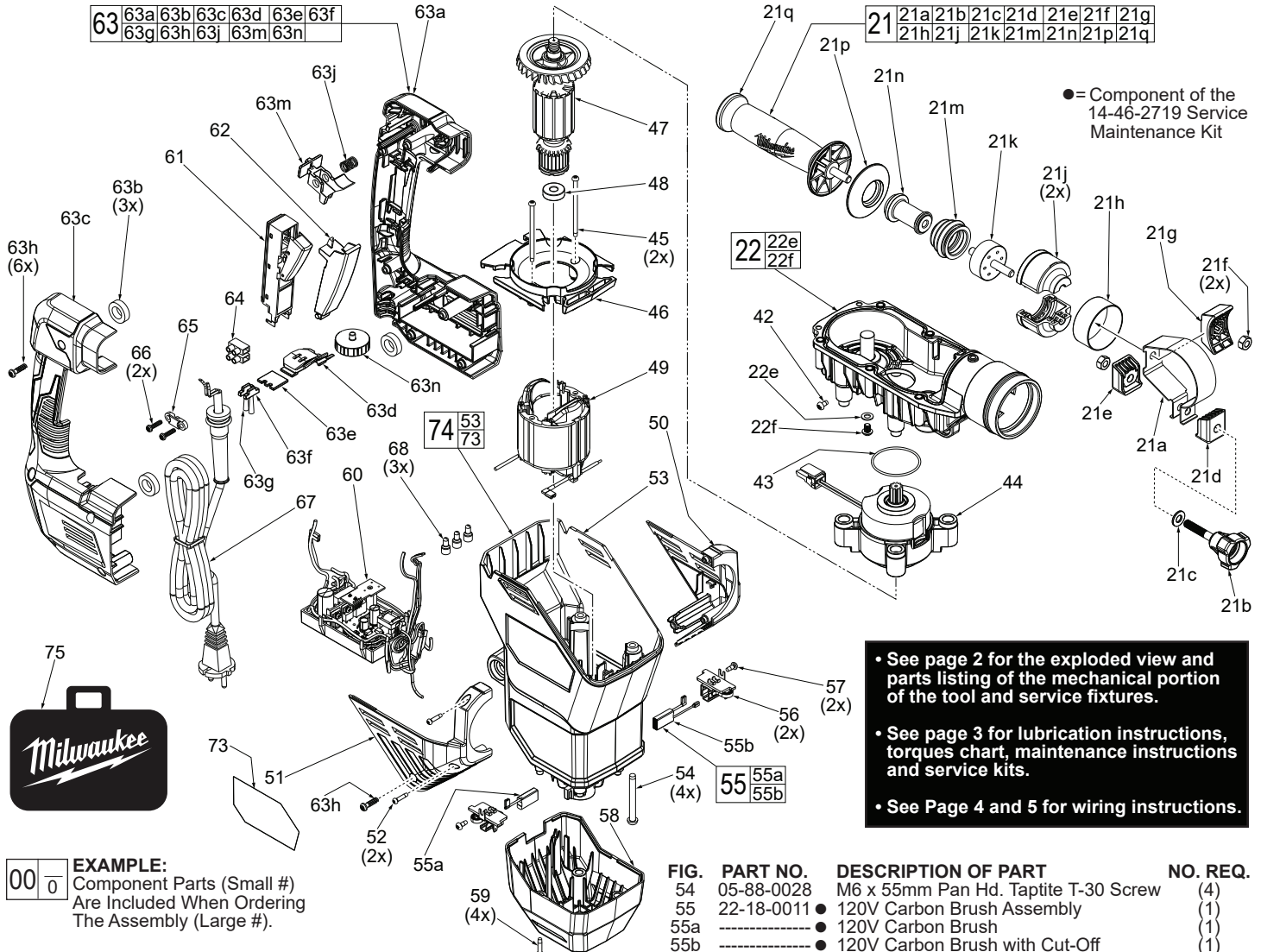




SERVICE PARTS LIST

BULLETIN NO.
54-24-2791

SPECIFY CATALOG NO. AND SERIAL NO. WHEN ORDERING PARTS		REVISED BULLETIN	DATE
1-3/4" SDS-Max ROTARY HAMMER		54-24-2790	June 2024
CATALOG NO.	5546-21	WIRING INSTRUCTION SEE PAGES 4 & 5	
SERIAL NO.	K61B		



EXAMPLE:
Component Parts (Small #)
Are Included When Ordering
The Assembly (Large #).

FIG.	PART NO.	DESCRIPTION OF PART	NO. REQ.
21	42-62-0013	Side Handle Assembly	(1)
21a	31-05-0011	Clamping Ring	(1)
21b	05-89-0015	Fixing Screw	(1)
21c	45-88-0103	Flat Washer	(1)
21d	43-72-0002	Holder 1	(1)
21e	43-72-0003	Holder 2	(1)
21f	05-55-0018	Hex Nut	(2)
21g	44-66-0049	Support Plate	(1)
21h	44-90-0046	Ring	(1)
21j	43-76-0012	Absorber Housing	(2)
21k	44-52-0013	Absorber	(1)
21m	43-87-0015	Bellows	(1)
21n	43-24-0010	Extension	(1)
21p	42-52-0031	Side Handle Cap	(1)
21q	43-98-5316	Side Handle	(1)
22	14-29-0039	Gearcase Assembly	(1)
22e	-----	Flat Washer	(1)
22f	-----	M6 x 10mm Pan Hd. Hex Drive Mach. Scr.	(1)
42	06-82-8828	8-32UNC x .313" Pan Hd. Taptite T-20 Scr.	(1)
43	34-40-0088	● O-Ring	(1)
44	42-70-0128	EM-Clutch Assembly	(1)
45	05-88-1275	M4 x 70mm Pan Hd. ST Phillips Screw	(2)
46	42-14-0027	Fan Baffle	(1)
47	16-01-0011	Armature Assembly	(1)
48	02-04-0530	Ball Bearing	(1)
49	18-01-0011	Field Assembly	(1)
50	43-76-0013	Front Housing Support - Left	(1)
51	43-76-0014	Front Housing Cover - Right	(2)
52	06-82-2025	M3.5 x 16mm Pan Hd. Plastite T-10 Screw	(2)
53	-----	Motor Housing	(1)

FIG.	PART NO.	DESCRIPTION OF PART	NO. REQ.
54	05-88-0028	M6 x 55mm Pan Hd. Taptite T-30 Screw	(4)
55	22-18-0011	● 120V Carbon Brush Assembly	(1)
55a	-----	● 120V Carbon Brush	(1)
55b	-----	● 120V Carbon Brush with Cut-Off	(1)
56	22-22-0021	Brush Holder Assembly	(2)
57	05-78-5313	M4 x 9mm Pan Hd. Plastite T-15 Screw	(3)
58	42-92-0049	Bottom Cover	(1)
59	06-82-0121	M4 x 18mm Pan Hd. ST T-20 Screw	(4)
60	14-20-0090	120V PCBA	(1)
61	23-66-0059	120V On-Off Switch	(1)
62	45-72-0017	Switch Trigger	(1)
63	14-34-0012	Handle Service Kit	(1)
63a	-----	Handle Support - Left	(1)
63b	42-42-0054	● Foam Bushing	(3)
63c	-----	Handle Cover - Right	(1)
63d	44-66-0098	Auto Stop Plate	(1)
63e	44-66-0099	LED Lens Holder Plate	(1)
63f	44-06-0007	Working Lens with Ink Print	(1)
63g	44-06-0008	Working Lens	(1)
63h	05-78-5311	M5 x 18mm Pan Hd. ST T-20 Screw	(7)
63j	40-50-0059	Spring	(1)
63m	44-60-0074	Lock Button	(1)
63n	43-98-0029	Speed Dial	(1)
64	22-56-0475	Terminal Block	(1)
65	31-17-0155	Cord Clamp	(1)
66	06-82-0995	M4 x 16mm Pan Hd. Plastite T-20 Screw	(2)
67	22-64-0019	120V Power Cord with Strain Relief	(1)
68	22-56-0150	Closed End Connector	(3)
73	12-20-0161	Service Nameplate	(1)
74	14-38-0032	Motor Housing Kit	(1)
75	42-55-0073	Blow Molded Carrying Case	(1)
	23-94-0048	Ground Wire Assembly (Not Shown)	(1)

Lubrication Note: MILWAUKEE recommends that scheduled maintenance of this Rotary Hammer include lubrication replacement, and replacement of vital O-rings and gaskets *at each carbon brush change*. Doing so will prolong the life of the hammer by reducing wear to gears and mechanism parts. The carbon brushes and armature commutator in this MILWAUKEE Rotary Hammer are designed and matched for many hours of reliable performance.

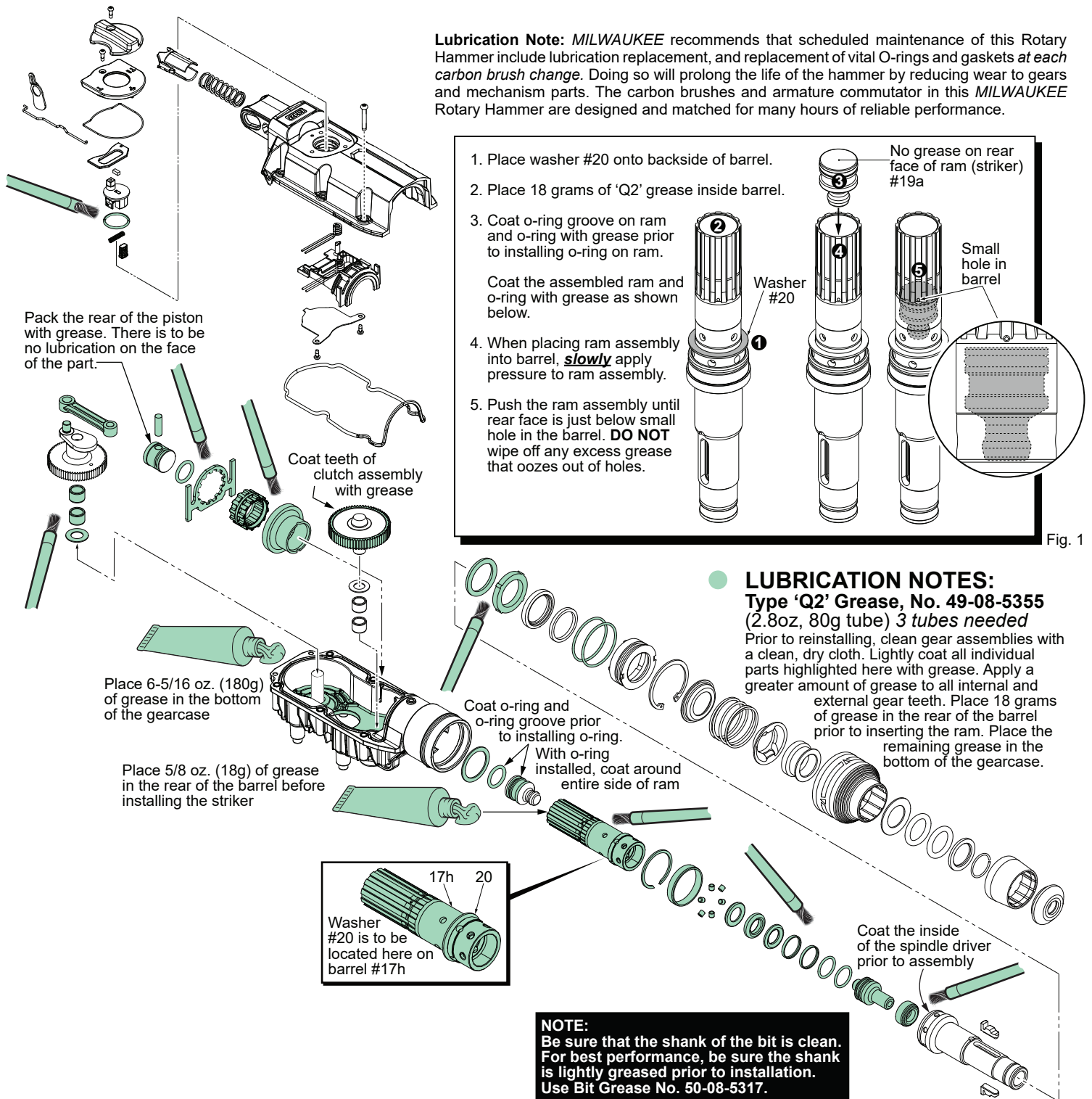


Fig. 1

LUBRICATION NOTES:
Type 'Q2' Grease, No. 49-08-5355 (2.8oz, 80g tube) 3 tubes needed

Prior to reinstalling, clean gear assemblies with a clean, dry cloth. Lightly coat all individual parts highlighted here with grease. Apply a greater amount of grease to all internal and external gear teeth. Place 18 grams of grease in the rear of the barrel prior to inserting the ram. Place the remaining grease in the bottom of the gearcase.

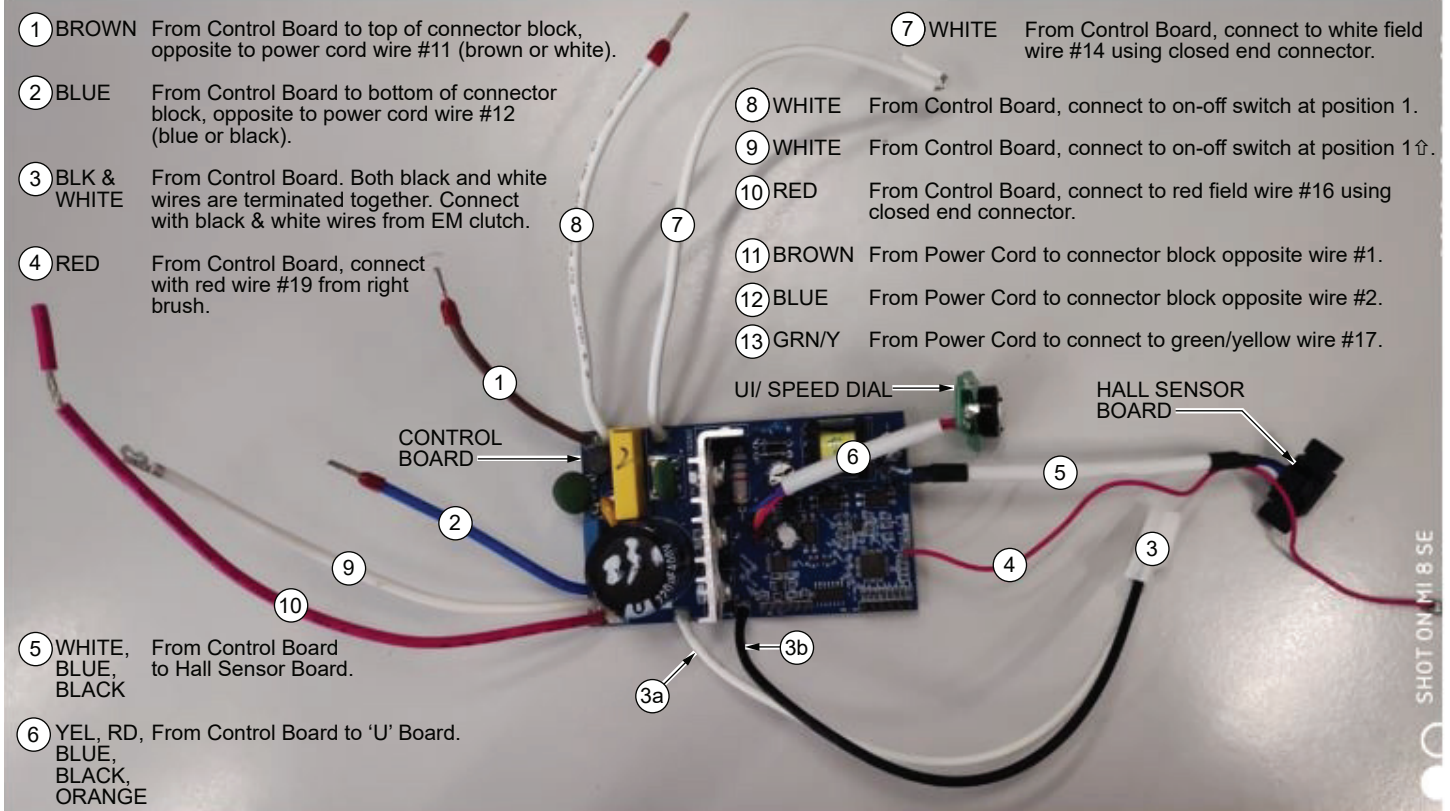
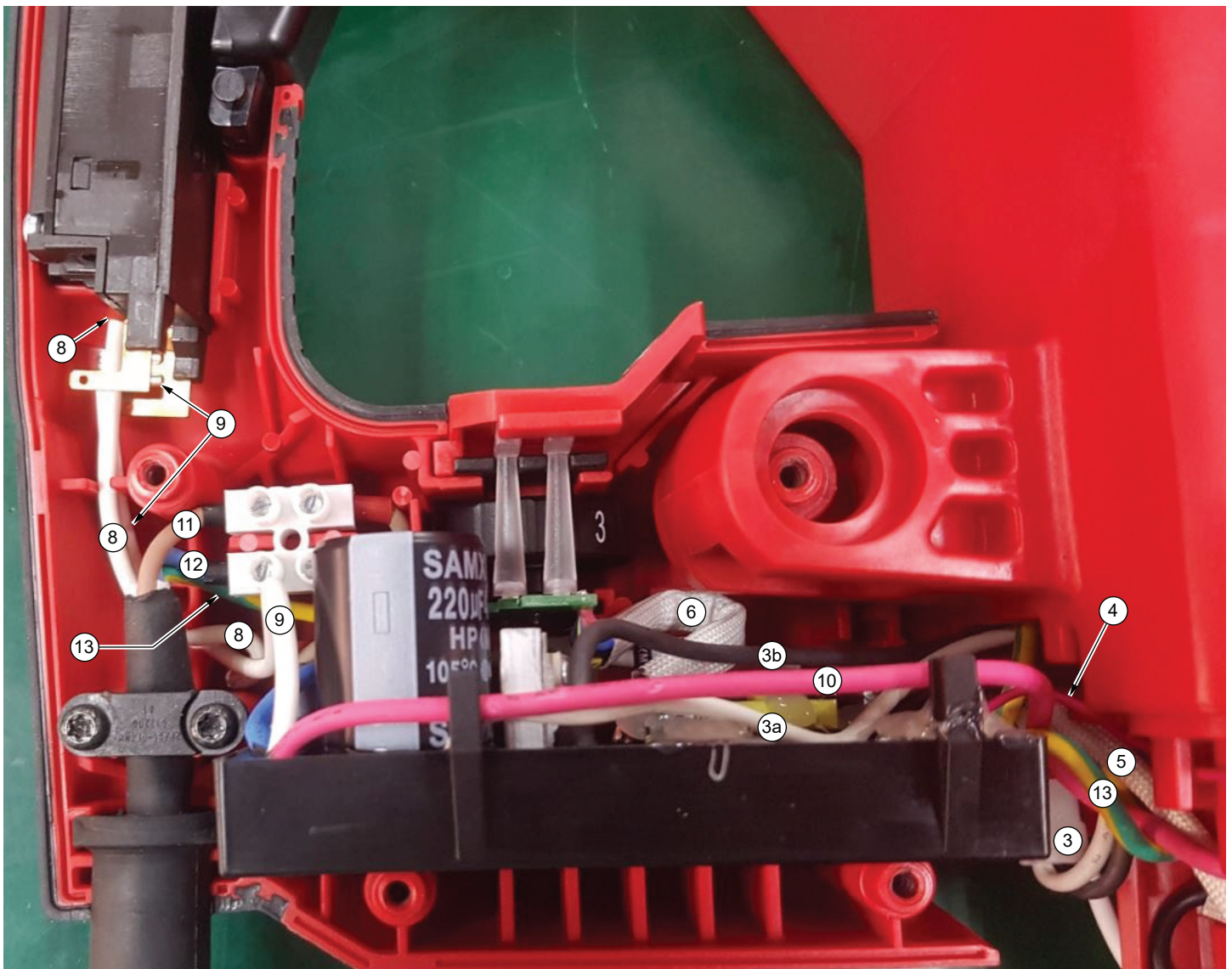
● **14-46-2719 MAINTENANCE SERVICE KIT**

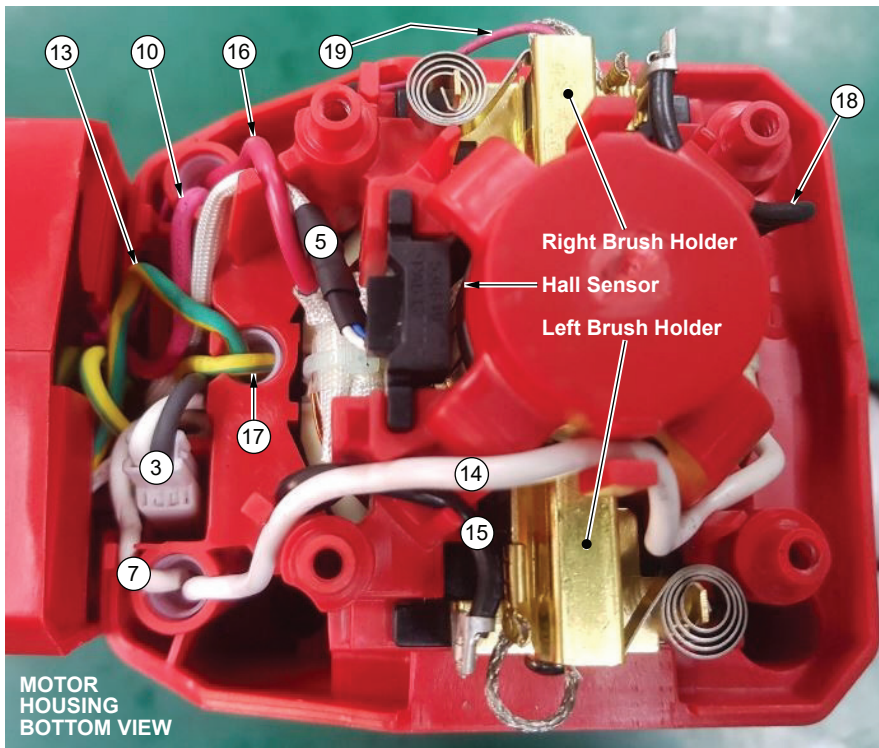
THIS KIT CONTAINS:

1	45-12-5316	Rubber Dust Shield
1	34-60-5316	Retaining Ring
2	34-40-5316	Spindle O-Ring
2	34-60-5319	O-Ring
2	45-06-5317	Turcon Seal
2	34-40-5308	O-Ring
2	42-42-0054	Foam Bushing
1	14-46-5316	Bearing Shield Assembly
1	34-60-0072	Back Press Ring
2	34-60-0078	O-Ring
1	43-44-0012	Rubber Gasket
1	34-40-5309	O-Ring
1	44-90-5319	Spring Ring
3	49-08-5355	'Q2' Grease (2.8oz/80g tube)
1	22-18-0011	120V Carbon Brush Assembly

FASTENER TORQUE SPECIFICATIONS

FIG. NO.	WHERE USED	SEATING TORQUE		
		lb-in	kgf-cm	Nm
34	Selector Bracket Clamp Plate	11	13	1.3
38	Gearcase Cover	44±3	51±4	5.0
47	Motor Housing	56	65	6.4
48d	Housing Halve Cover	25	29	2.9
48c	Housing Halve Cover	11	13	1.3
50b	Coin Cell Cover	2.6	3.05	0.3
39h	Selector Knob	16	18	1.8
39h	On-Off Switch	11	13	1.3
	Switch Termination Screws	8	10	1.0
	Ground Screw-Gearcase	44	50	5.0





- ③ BLK & WHITE From Control Board. Both black and white wires are terminated together. Connect with black & white wires from EM clutch.
- ⑤ WHITE, BLUE, BLACK From Control Board to Hall Sensor Board.
- ⑦ WHITE From Control Board, connect to white field wire #14 using closed end connector.
- ⑩ RED From Control Board, connect to red field wire #16 using closed end connector.
- ⑬ GRN/Y From Power Cord to connect to green/yellow wire #17 using closed end connector.
- ⑭ WHITE From Field, connect to white wire #7 from control board assembly using closed end connector.
- ⑮ BLACK From Field, connect to left brush holder assembly.
- ⑯ RED From Field, connect with red wire #11 using closed end connector.
- ⑰ GRN/Y Ground wire assembly, connect to green/yellow wire #13 using closed end connector.
- ⑱ BLACK From Field, connect to right brush holder assembly.
- ⑲ RED From Right Brush, connect to red wire #4 from control board.

