



SERVICE PARTS LIST

BULLETIN NO.
54-24-6050

SPECIFY CATALOG NO. AND SERIAL NO. WHEN ORDERING PARTS

2" SPLINE ROTARY HAMMER

CATALOG NO. 5340-20

SERIAL
NUMBER

A49A

REVISED BULLETIN

DATE
Mar. 2013

WIRING INSTRUCTION
58-01-0195

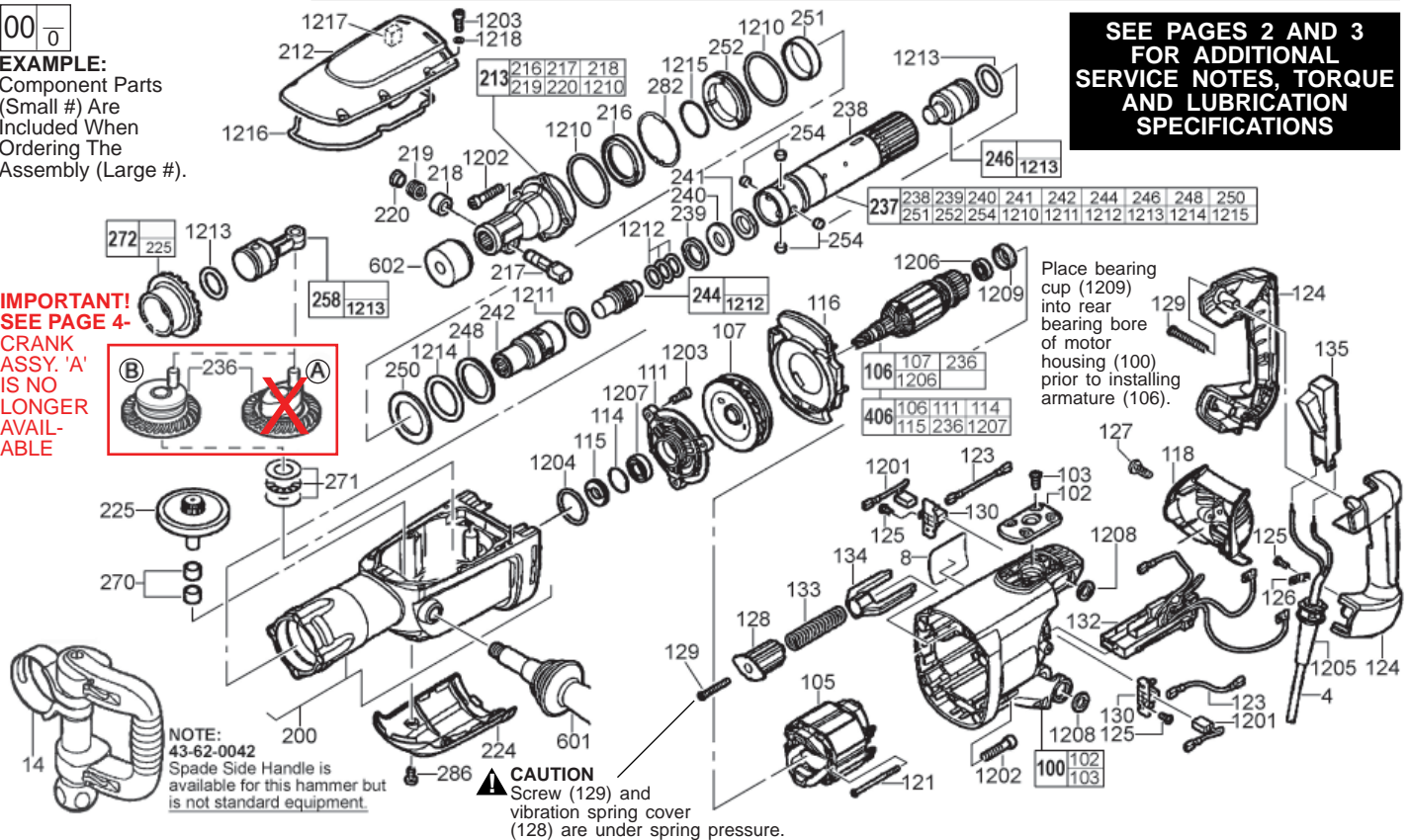
00
0

EXAMPLE:

Component Parts
(Small #) Are
Included When
Ordering The
Assembly (Large #).

SEE PAGES 2 AND 3
FOR ADDITIONAL
SERVICE NOTES, TORQUE
AND LUBRICATION
SPECIFICATIONS

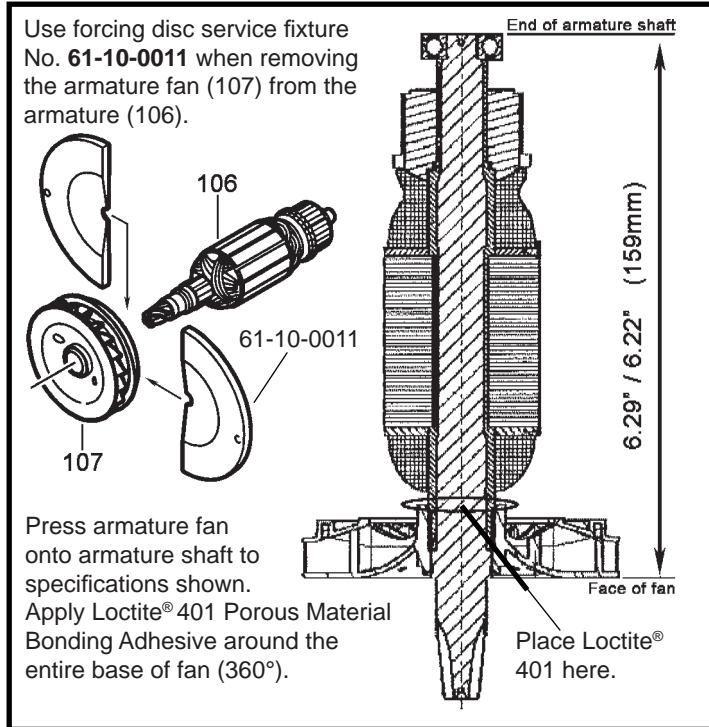
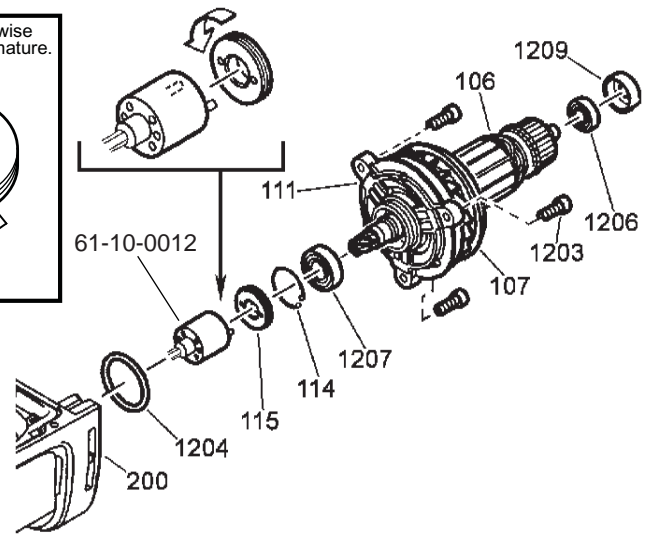
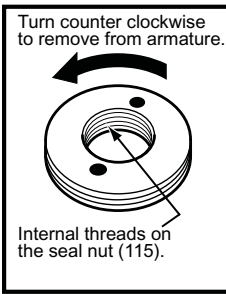
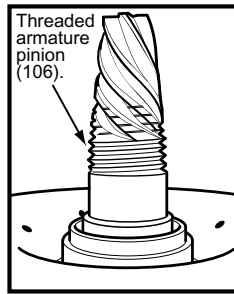
IMPORTANT!
SEE PAGE 4-
CRANK
ASSY. 'A'
IS NO
LONGER
AVAIL-
ABLE



◆=Component of the 14-46-0041 MAINTENANCE SET (NOT SHOWN)

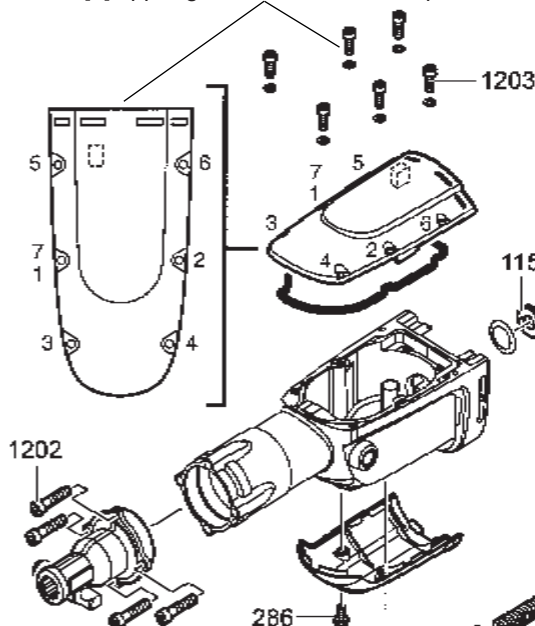
MILWAUKEE ELECTRIC TOOL CORPORATION
13135 W. LISBON RD., BROOKFIELD, WI 53005
Drwg.6

Service fixture **No. 61-10-0012** is required to remove seal nut (115) from armature shaft (106)/ bearing end plate (111). Secure armature, insert pins of service fixture into holes located in seal nut and turn counter clockwise to remove. When reassembling seal nut to bearing plate, tighten to 141 in.-lbs. (16Nm).



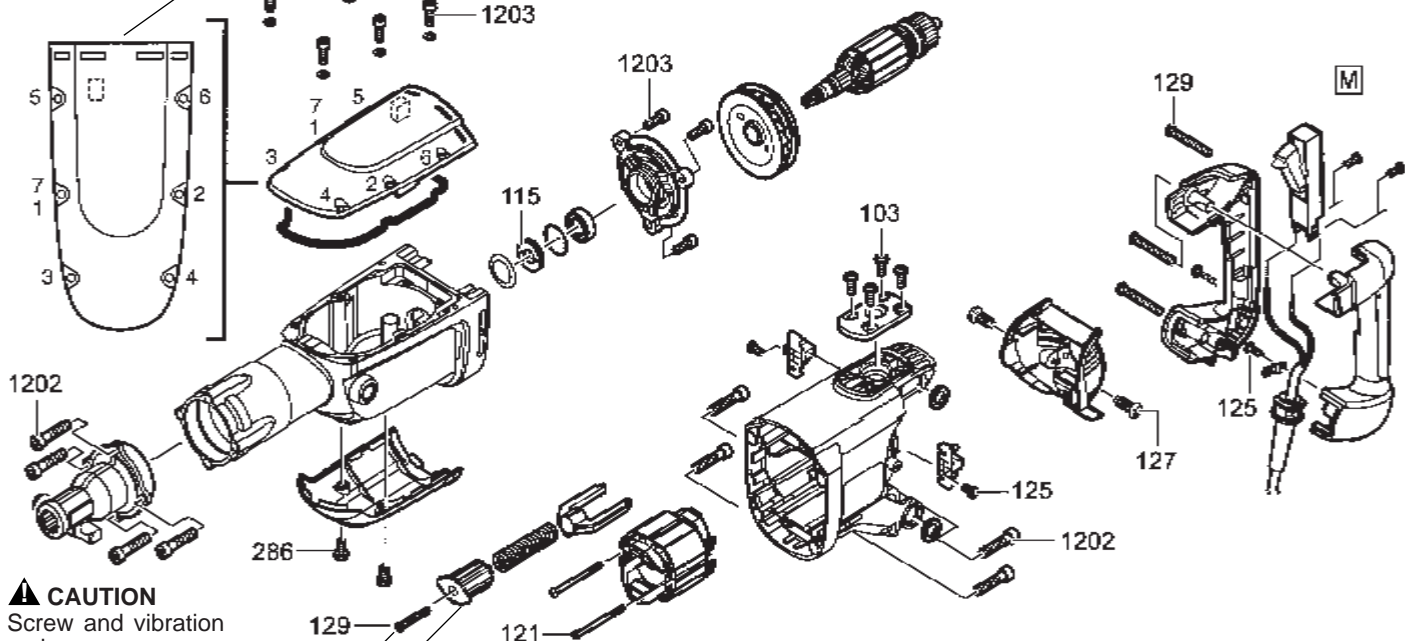
Apply blue Loctite® ThreadLocker 242 adhesive, or the equivalent, to ALL #1202 and #1203 screws prior to reassembly.

When securing upper gear box cover to gear box, tighten the six [6] upper gear box screws in sequence illustrated.

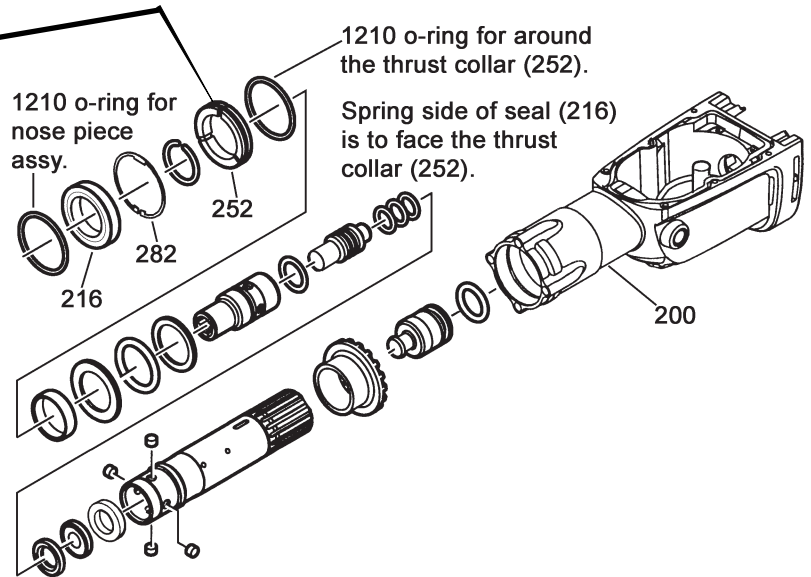
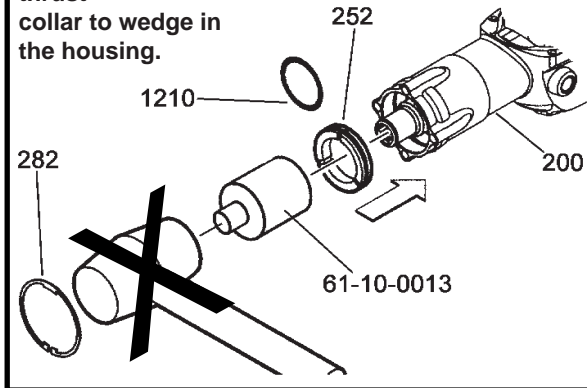


CAUTION
Screw and vibration spring cover are under spring pressure.

SEQUENCE AND TORQUES OF SCREWS			
Callout	Fastener/Part Description	Torque (Nm)	Torque (Lbs-In)
1203	Bearing End Plate Screws	4	35
1203	Upper Gear Box Cover Screws	4.5	40
286	Lower Gear Box Cover Screws	3	27
1202	Nose Piece Screws	18	159
1202	Motor Housing Screws	13	115
127	Servicing Lid Screws	1.3	12
129	D-Handle Screws	3	27
121	Field Screws	2	18
129	Anti-Vibration Mechanism Scr.	3	27
115	Seal Nut	16	141
125	Strain Relief Clamp Screws	1.3	12
125	Carbon Brush Holders	1.3	12
M	Switch Screws	0.5	4
103	Side Handle Plate Screws	4	35



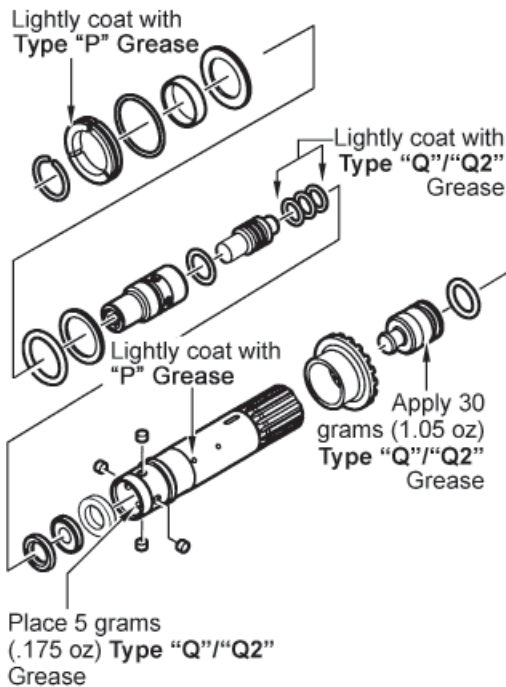
Place o-ring (1210) onto the thrust collar (252). Lightly grease the O.D. of the thrust collar. Insert the thrust collar assembly into gear box (200) until the outside face of the thrust collar assembly is flush with the face of the gear box. Place the open end of the service fixture 61-10-0013 over the spindle assembly and gently push the thrust collar assembly into the gearcase prior to installing the retaining ring (282). **Striking the service fixture with a hammer is not recommended, doing so may cause the thrust collar to wedge in the housing.**



MAINTENANCE KIT CONTAINING "Q"/"Q2" GREASE, FOLLOW THESE INSTRUCTIONS

Lubrication of this tool should be performed at regular intervals or when the carbon brushes switch off at the latest.

**FOR
5340-20
HAMMERS**

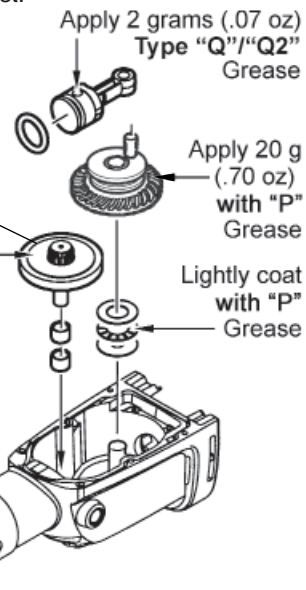


Approximately 150 grams (65.3 oz) of Type "P" Grease and 37 grams (1.32 oz) of Type "Q" or Type "Q2" Grease will be needed in total.

Do not wash-up clutch assembly. Wipe old lubrication off with a clean, dry cloth.

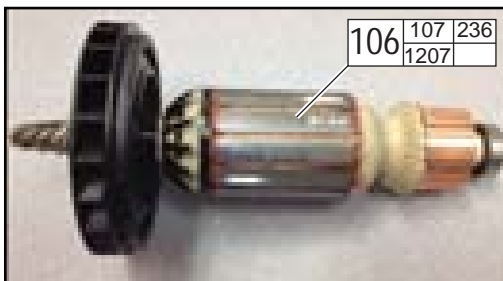
Place 80 grams (2.8 oz) Type "P" Grease

Place 50 grams (1.75 oz) Type "P" Grease



LUBRICATION CHART		
LUBRICATION DESCRIPTION	CATALOG NO.	QTY. REQ.
◆ Type "P" Grease (100 g tube)	49-08-5350	2
◆ Type "Q" Grease (45 g tube)	49-08-4255	1
OR		
◆ Type "Q2" Grease (45 g tube)	49-08-5345	1
◆ Hammer Bit Grease (20 g tube)	49-08-5383	1

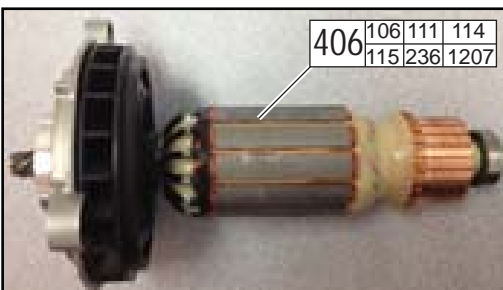
◆=Component of the 14-46-0041 Maintenance Set. **Note:** Maintenance Set includes either "Q" or "Q2" grease, not both!



#106, No. 16-10-0137
Armature Assembly
(Armature, fan and rear
ball bearing) with
Crank Assembly #236



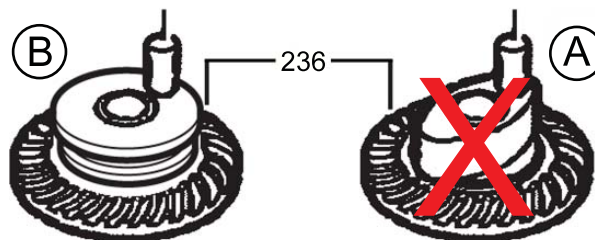
236 (Crank Assembly)



#406, No. 16-10-0138
Armature Assembly
(Armature, fan, rear ball
bearing, bearing end
plate, retaining ring, seal
nut and front ball
bearing) with Crank
Assembly #236



236 (Crank Assembly)



The 'A' profile of Crank Assembly #236 was manufactured into the hammer models listed below. The 'A' design is no longer available. The 'B' profile of Crank Assembly #236 is the direct replacement.

3/4" Hex Demolition Hammer **5337-20**, serial break **A47A**

SDS Max Demolition Hammer **5339-20**, serial break **A48A**

2" Spline Rotary Hammer **5340-20**, serial break **A49A**

SDS Max Rotary Hammer **5342-20**, serial break **A50A**

The 'B' Crank Assembly is not available as an individual part but is a component of #106, Armature Assembly 16-10-0137 and #406, Armature Assembly 16-10-0138. When installing any of these two armature assemblies, the new 'B' crank assembly that is supplied must be used.

DISCARD 'A' profile Crank Assemblies. DO NOT attempt to utilize an old crank assembly with the 'A' profile with a new service armature assembly! This may cause extensive damage to the tool.