



SERVICE PARTS LIST

BULLETIN NO.
54-26-2995

SPECIFY CATALOG NO. AND SERIAL NO. WHEN ORDERING PARTS		REVISED BULLETIN	DATE
M18 FUEL™ 1/4" Hex Impact Driver with ONE-KEY™			Feb. 2026
CATALOG NO. 2957-20	SERIAL NO. N57A	WIRING INSTRUCTION See Pages 3 - 5	
NAMEPLATE SPECIFICATIONS: INPUT: 18 V = n 0-4 400 min ⁻¹ (IPM) n ₀ 0-3 900 min ⁻¹ (RPM) Contains FCC ID: QQQ-BGM220S2 Contains IC: 5123A-BGM220S2			

EXAMPLE:
Component Parts (Small #)
Are Included When Ordering
The Assembly (Large #).

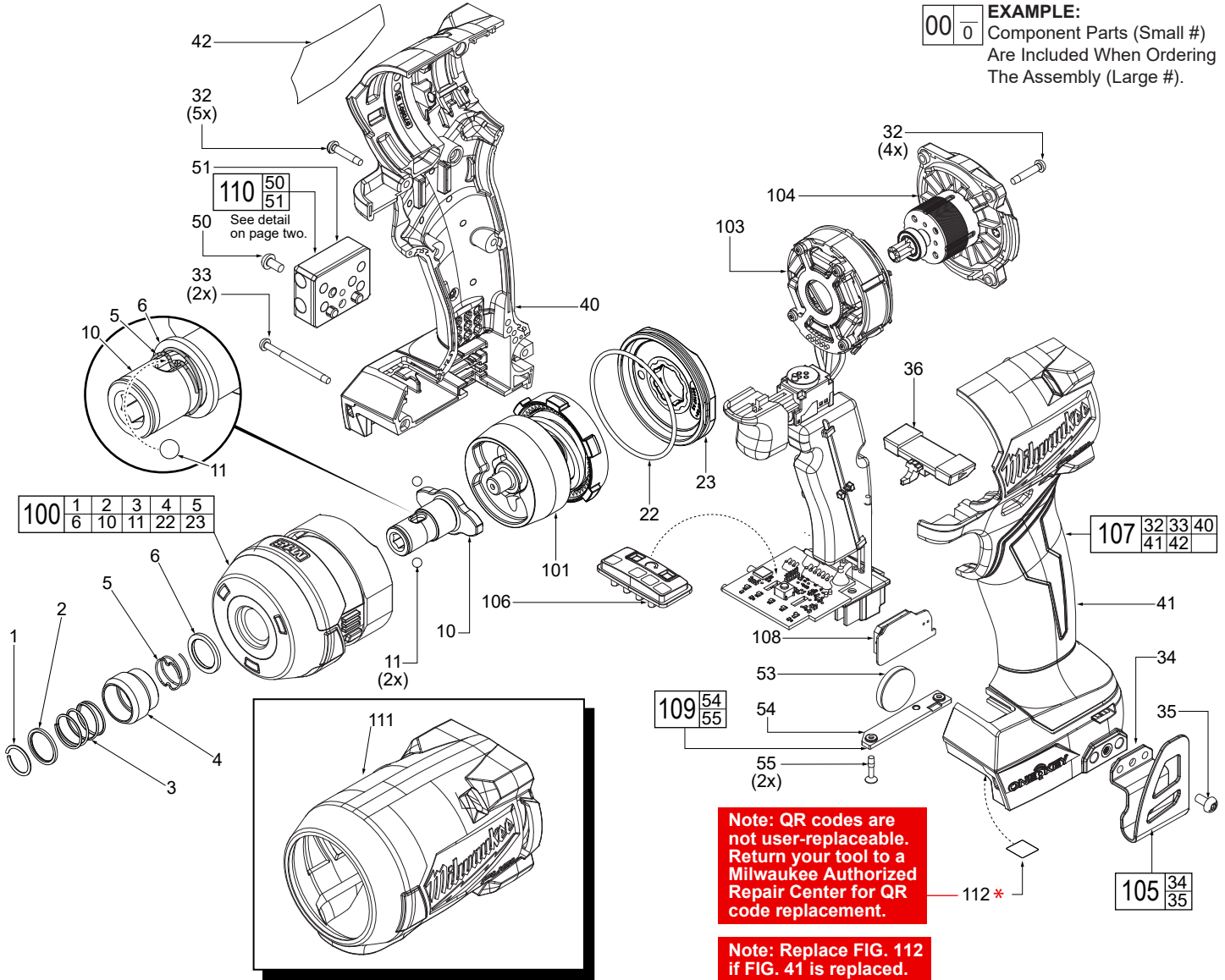
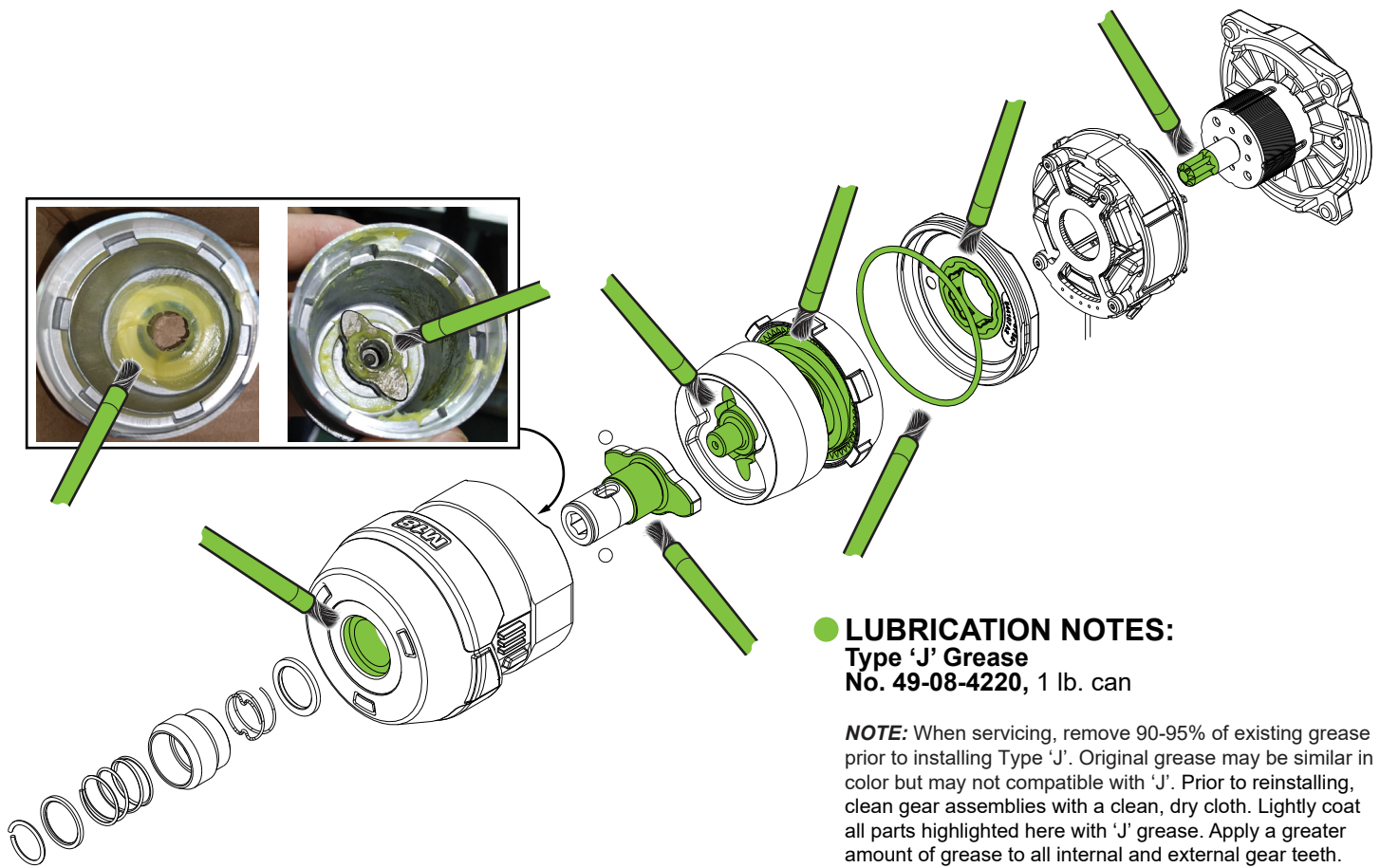


FIG.	PART NO.	DESCRIPTION OF PART	NO. REQ.
1	05-92-1010	Retaining Ring	(1)
2	45-88-2026	Washer	(1)
3	40-50-0056	Spring	(1)
4	42-76-0019	Sleeve	(1)
5	40-50-9215	Anvil Spring	(1)
6	45-88-1547	Washer	(1)
10	42-06-7033	1/4" Hex Anvil	(1)
11	02-02-1100	Steel Ball	(2)
22	34-40-0596	O-Ring	(1)
23	-----	Gearcase Cap	(1)
32	06-82-6351	M3 x 16mm Pan Hd. ST T-10 Screw	(9)
33	06-82-2367	M3 x 38mm Pan Hd. ST T-10 Screw	(2)
34	-----	Belt Clip	(1)
35	06-82-2500	6-32 x 7mm Pan Hd. Phillips Mach. Scr.	(1)
36	45-24-8005	Forward/Reverse Shuttle	(1)
40	-----	Right Handle Halve - Cover	(1)
41	-----	Left Handle Halve - Support	(1)
42	12-20-9920	Service Nameplate	(1)
50	06-82-2500	6-32 x 7mm Pan Hd. Phillips Screw (for M18™) (Accessory)	(1)

FIG.	PART NO.	DESCRIPTION OF PART	NO. REQ.
51	-----	Bit Holder (Accessory)	(1)
53	-----	3V Coin Cell	(1)
54	-----	Coin Cell Cover	(1)
55	-----	M2.6 x 12mm FH Phillips ST Screw	(2)
100	14-46-2902	Gearcase and Gearcase Cap Assembly	(1)
101	14-30-2810	Impacting Assembly	(1)
103	14-20-9240	Electronics Assembly	(1)
104	16-01-3045	Rotor/End Cap Service Assembly	(1)
105	42-70-0950	Belt Clip Service Kit	(1)
106	45-24-9025	Speed Selector Service Assembly	(1)
107	14-34-7040	Housing Service Kit	(1)
108	14-20-0068	Coin Cell Board Assembly	(1)
109	45-04-7015	Coin Cell Cover Assembly	(1)
110	49-16-3697	Bit Holder Kit (Accessory, Optional)	(1)
111	49-16-2953	Rubber Boot (Accessory)	(1)
112	10-15-9730	QR Code Label	(1)

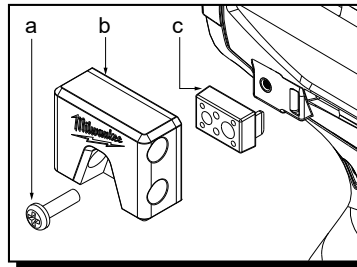
MILWAUKEE TOOL • www.milwaukeetool.com
13135 W. LISBON RD., BROOKFIELD, WI 53005
Dwg. 3



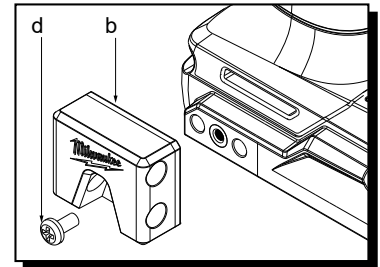
LUBRICATION NOTES:
Type 'J' Grease
No. 49-08-4220, 1 lb. can

NOTE: When servicing, remove 90-95% of existing grease prior to installing Type 'J'. Original grease may be similar in color but may not be compatible with 'J'. Prior to reinstalling, clean gear assemblies with a clean, dry cloth. Lightly coat all parts highlighted here with 'J' grease. Apply a greater amount of grease to all internal and external gear teeth.

Bit Holder on M12™ Products

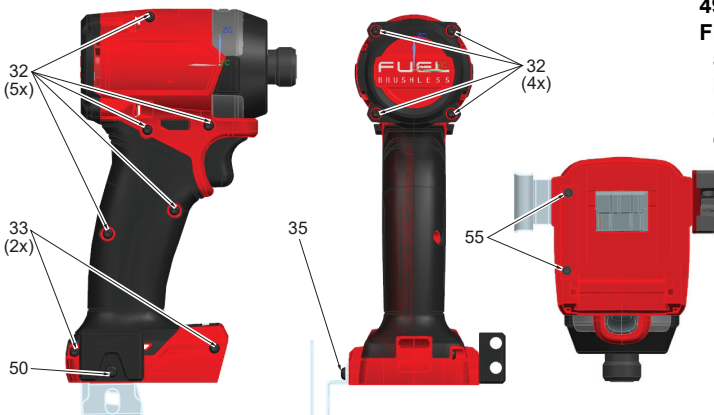


Bit Holder on M18™ Products



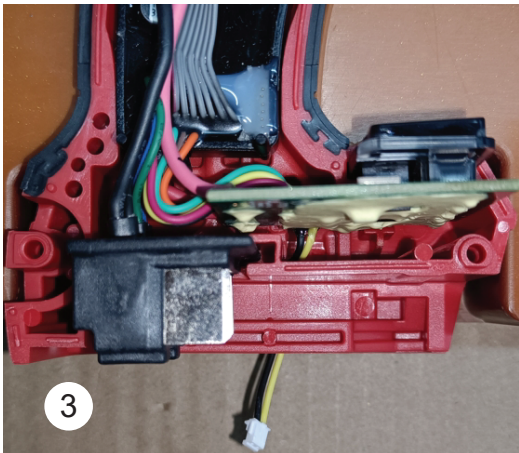
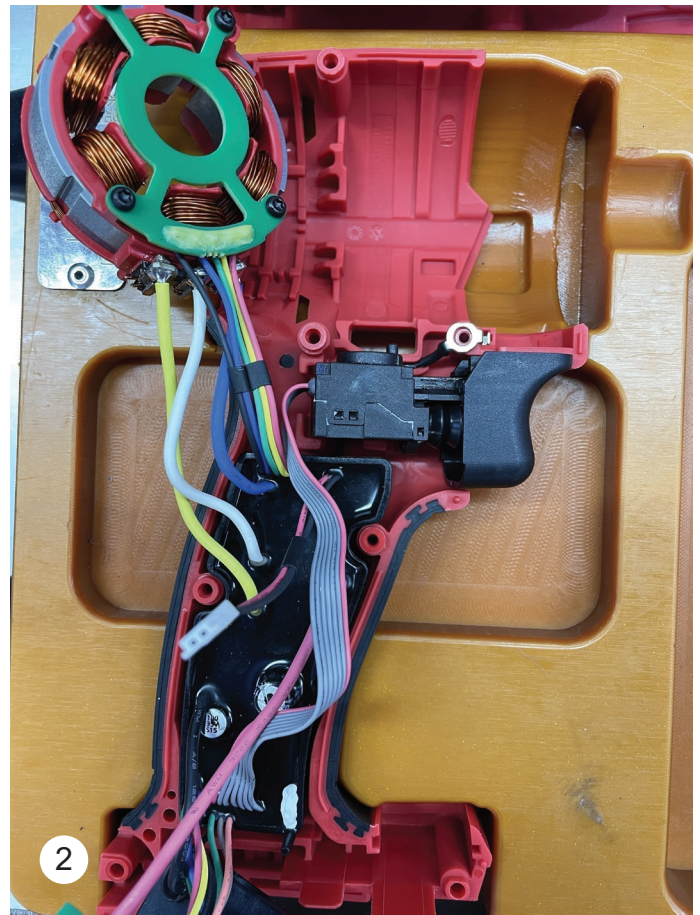
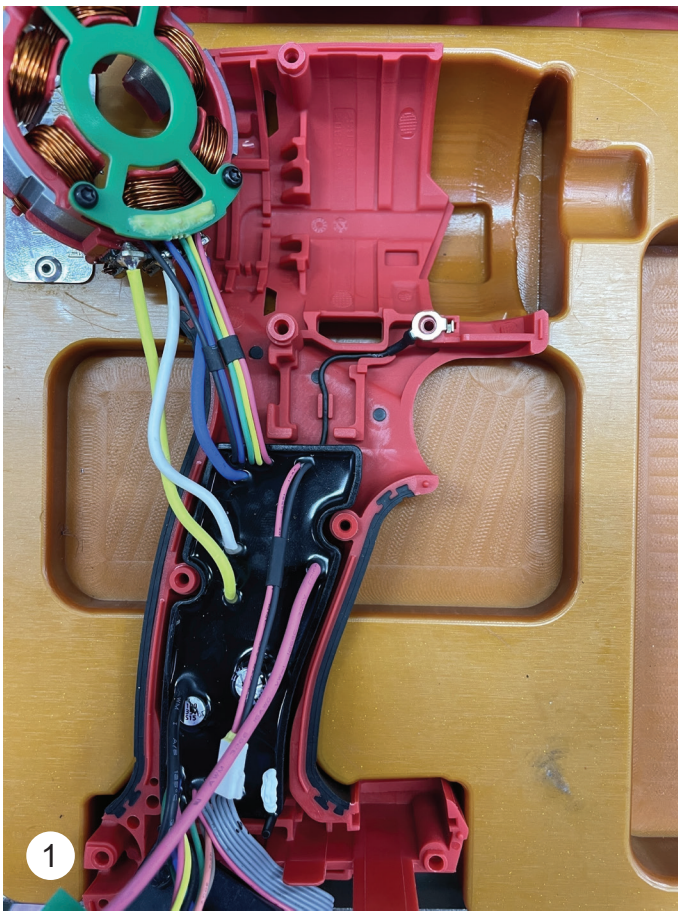
49-16-3697 BIT HOLDER (ACCESSORY)

FIG.	PART NO.	DESCRIPTION OF PART
a	06-82-3008	6-32 x 12.7mm Pan Hd. Phillips Screw (For M12™ Tools)
b	-----	Bit Holder
c	-----	Adapter (For M12™ Tools)
d	06-82-2500	6-32 x 7mm Pan Hd. Phillips Screw (For M18™ Tools)



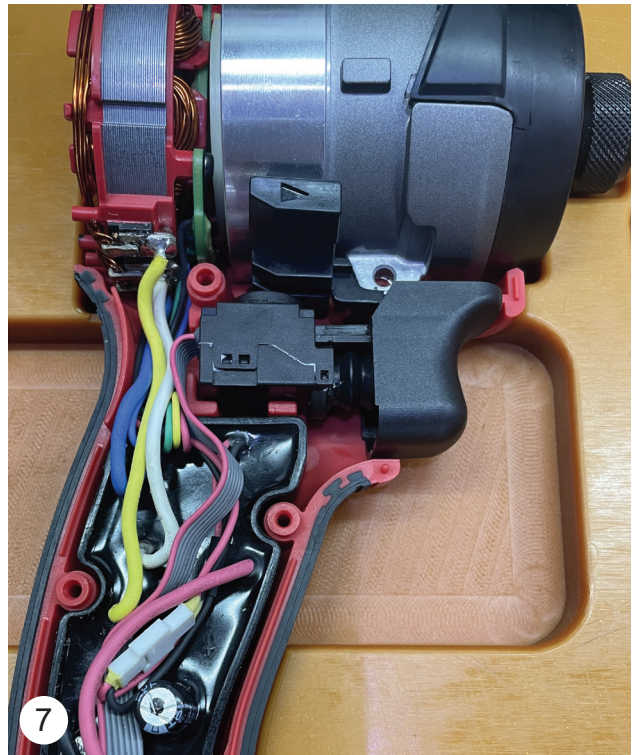
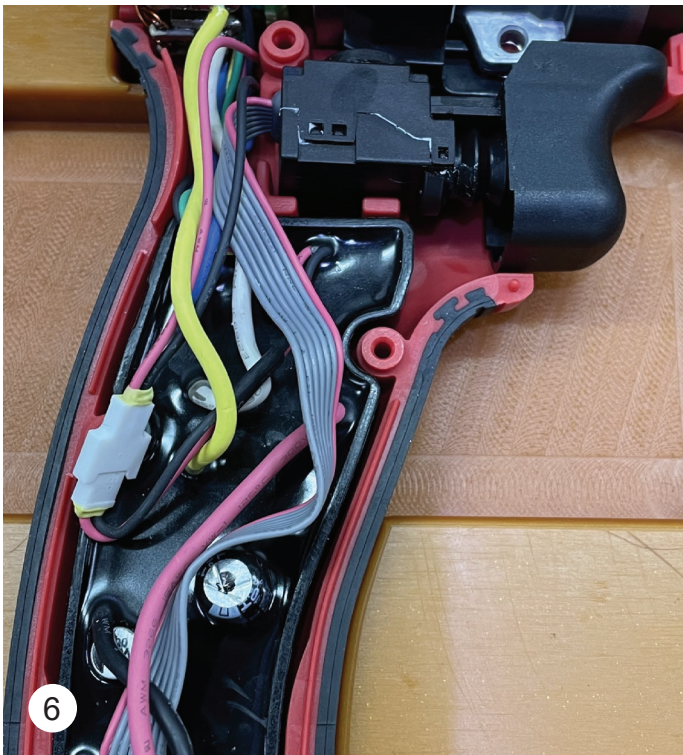
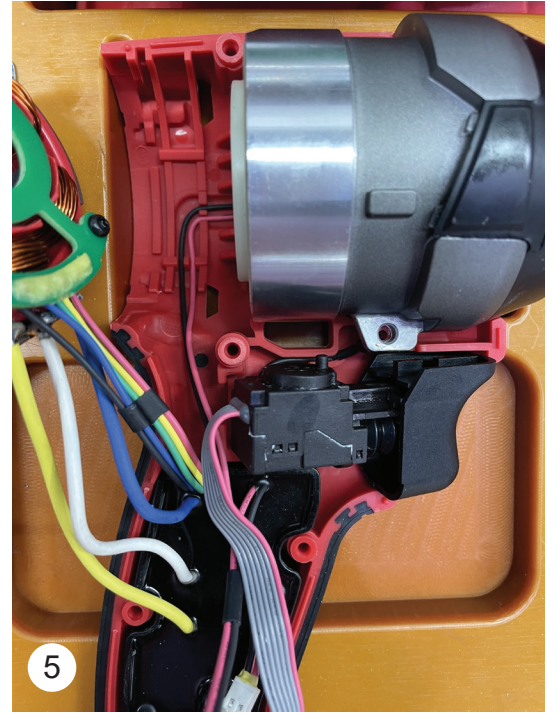
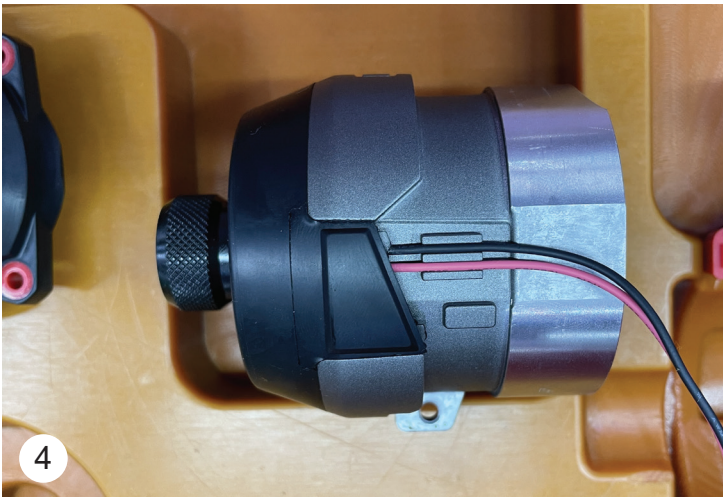
SCREW TORQUE SPECIFICATIONS

FIG.	PART NO.	DESCRIPTION OF FASTENER	WHERE USED	SEAT TORQUE	
				(kgf-cm)	(lb-in)
32	06-82-6351	M3 x 16mm Pan Hd. ST T-10 Screw	Right Handle Halve - Handle Cover (Qty. of 5)	9±1	7.81±1
32	06-82-6351	M3 x 16mm Pan Hd. ST T-10 Screw	Rotor/End Cap Service Assembly (Qty. of 4)	6.5±1	5.64±1
33	06-82-2367	M3 x 38mm Pan Hd. ST T-10 Screw	Right Handle Halve - Handle Cover (Qty. of 2)	9±1	7.81±1
35	06-82-2500	6-32 x 7mm Pan Hd. Phillips Screw	Belt Clip	16±2	13.88±1
50	06-82-2500	6-32 x 7mm Pan Hd. Phillips Screw	Bit Holder	16±2	13.88±1
55	-----	M2.6 x 12mm FH Phillips ST Screw	Coin Cell Cover (Qty. of 2)	4±0.5	3.47±0.5



1. Place potted boat PCBA in handle half as shown.
2. Install On-Off Switch in handle cavity as shown.
3. Insert coin cell battery wire through hole. Insert Speed Selector Assembly in handle slot. Assemble Battery Terminal Block in corresponding handle slot. Install ground wire terminal and route wire through traps as shown. Be sure that wire is pressed down completely in each trap.

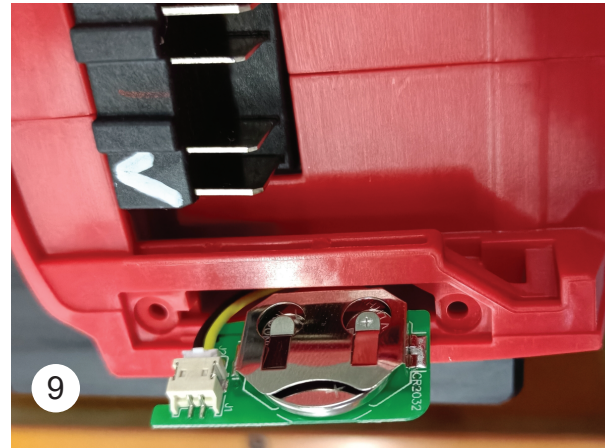
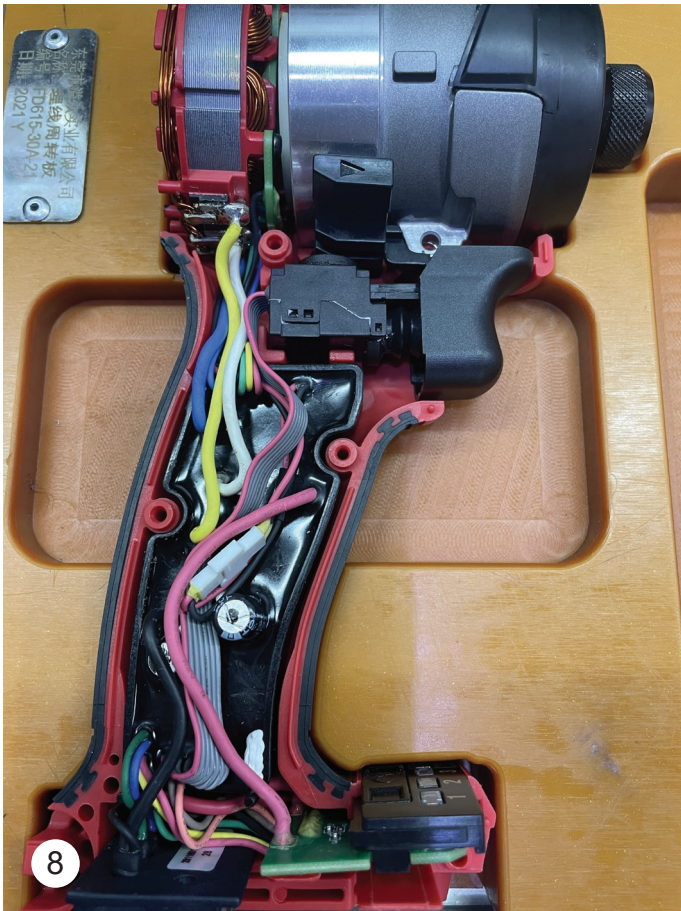
Continue on next page...



4. Route wires from Shadowless LED Assembly as shown. Secure wires to Gearcase with a piece of tape (approximately 35mm long).
5. Install Gearcase/Shadowless LED Assembly onto handle half. Route wires from Shadowless LED Assembly in traps as pictured. Be sure that wires are pressed down completely in each trap.
6. Assemble connector from the Shadowless LED Assembly to the connector on the Potted Boat PCBA. Lightly tug at the connectors to assure that they are joined properly.

7. Install Stator into handle half. Route stator wires from bottom to top (gray, purple and black). Be sure that the Stator, Gearcase and Shadowless LED Assembly are seated firmly and squarely in the handle half cavities. Install the Forward/Reverse Shuttle over On-Off Switch and into shuttle opening of handle. Be sure On-Off Switch is seated firmly and squarely in the handle half cavity.

Continue on next page...



8. Prior to installing Cover (Right Handle Halve), check that all electrical components are seated firmly and squarely in the handle cavities. Be sure all wires and connectors are tucked in place and are not interfering with the trigger movement of the On-Off Switch. Be sure wires are not going to be pinched.

As an aid to reassembly, take notice of wire routings and position in wire guides and traps while dismantling the tool.

Before securing Cover (Right Handle Halve) onto Support (Left Handle Halve), check for proper functionality of the Switch trigger as well as the Forward/Reverse Shuttle.

9. Connect wire to the coin cell battery PCBA. Assemble into the pocket and secure cover.

Install battery and depress switch trigger to assure tool is operating properly.