

## SERVICE PARTS LIST

**BULLETIN NO.**  
**54-40-8015**

SPECIFY CATALOG NO. AND SERIAL NO. WHEN ORDERING PARTS		REVISED BULLETIN	DATE Mar. 2025
M18 FUEL™ Deep Cut Band Saw		WIRING INSTRUCTION <b>See Page 3</b>	
CATALOG NO.    2929-20	SERIAL NO.        P60A		

00	0	<b>EXAMPLE:</b> Component Parts (Small #) Are Included When Ordering The Assembly (Large #).
----	---	----------------------------------------------------------------------------------------------------

**NOTE: Use of this bandsaw is not recommended on bandsaw tables.**

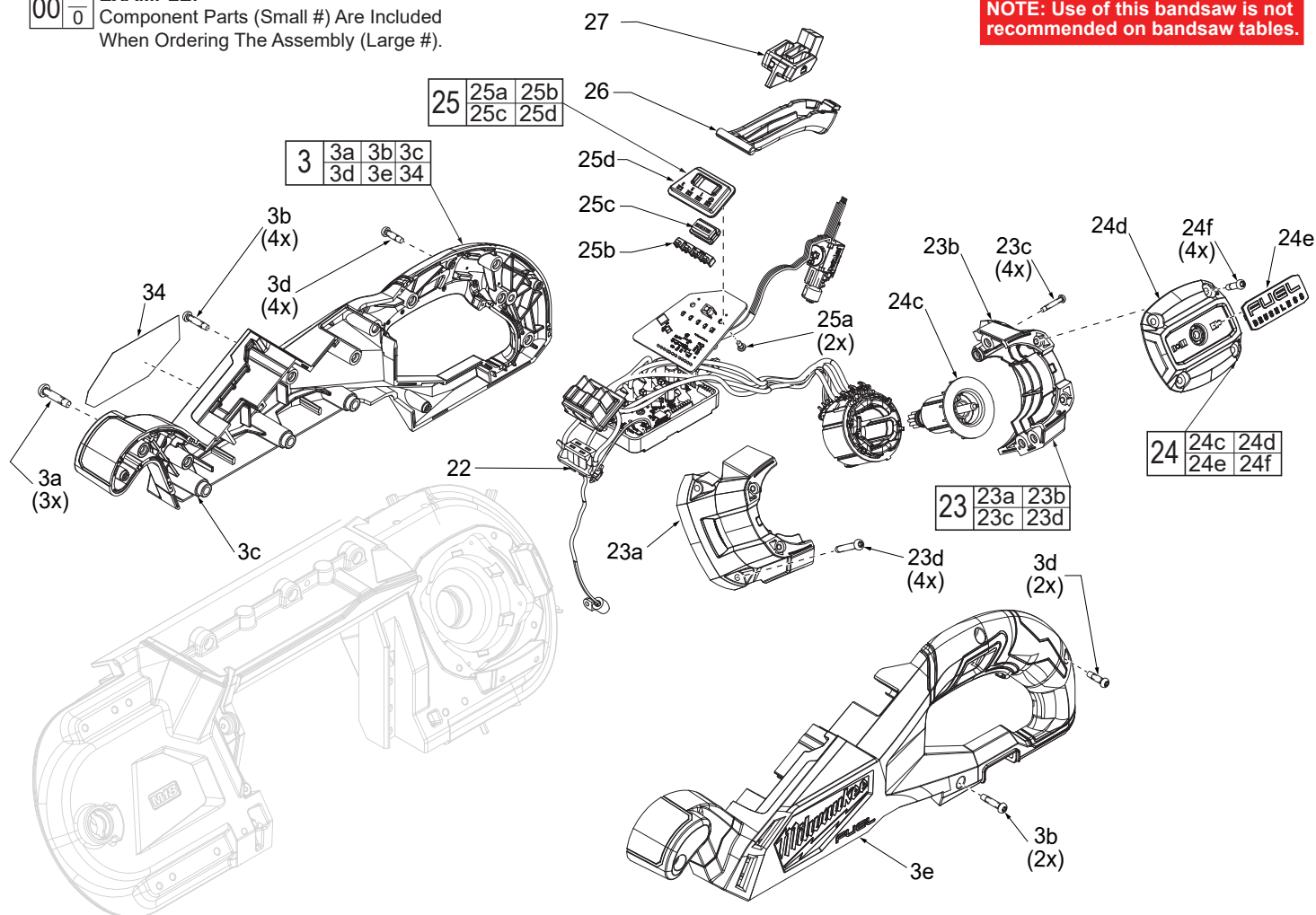


FIG.	PART NO.	DESCRIPTION OF PART	NO. REQ.
3	31-44-3250	Handle Service Kit	(1)
3a	06-82-0152	M5 x 22mm Pan Hd. ST T-25 Screw	(3)
3b	06-82-0044	M4 x 18mm Pan Hd. ST T-20 Screw	(7)
3c	-----	Handle Cover	(1)
3d	06-82-8895	M4 x 14mm Pan Hd. ST T-20 Screw	(6)
3e	-----	Handle Support	(1)
22	14-20-0775	Electronics Assembly	(1)
23	31-50-3375	Motor Housing Kit	(1)
23a	-----	Motor Housing Support	(1)
23b	-----	Motor Housing Cover	(1)
23c	05-88-0780	M3 x 18mm Pan Hd. ST T-10 Screw	(4)
23d	05-78-0870	M4 x 16mm Pan Hd. T-20 Screw	(4)
24	16-01-0085	Rotor Kit	(1)
24c	-----	Motor Assembly	(1)
24d	-----	Motor Housing Cap	(1)
24e	-----	Logo Plate	(1)
24f	-----	M4 x 12mm Pan Hd. T-20 Screw	(4)
25	42-92-1570	UI Cover Kit	(1)
25a	-----	M3 x 6mm Pan Hd. PH Screw	(2)
25b	-----	Lens Cover	(1)
25c	-----	Mode Select Button	(1)
25d	-----	UI Panel	(1)
26	45-72-0075	Trigger	(1)
27	42-42-0875	Lock-off Button	(1)
34	12-20-1010	Service Nameplate	(1)

SCREW TORQUE SPECIFICATIONS				
FIG.	PART NO.	WHERE USED	SEAT TORQUE	
			(kgf-cm)	(lb-in)
1a	06-82-0985	Rear Pulley	200±20	174±17
2a	05-74-0740	Output Shaft Ret. Kit	14±1.5	12±1
3a	06-82-0152	Handle	18±2	16±2
3b	06-80-0044	Handle	18±2	16±2
3d	06-82-8895	Handle	12±2	10±2
4c	05-78-0910	Hang Hook Kit	20±2	17±2
6b	-----	Tensioning Mechanism	35±3.5	30±3
6f	-----	Tensioning Mechanism	130±10	113±9
11a	-----	Tire Cleaning Brush	19±2	17±2
12b	06-82-5314	Shroud	35±3	30±3
13	06-82-5574	Rear Blade Guide	34±3	30±3
17a	-----	Tension Lever	32±3	28±3
18a	-----	LED Housing	3.5±0.5	3±0.4
18c	-----	LED Housing	8±1	7±1
20b	-----	Tether Hook	42±3	37±3
21h	05-74-0117	Gear Assembly	6±1	5±1
23c	05-88-0780	Motor Housing	10±1	9±1
23d	05-78-0870	Motor Housing	25±2.5	22±2
24f	-----	Rotor Assembly	16±1.5	14±1
25a	-----	UI Cover	3.5±0.5	3±0.4

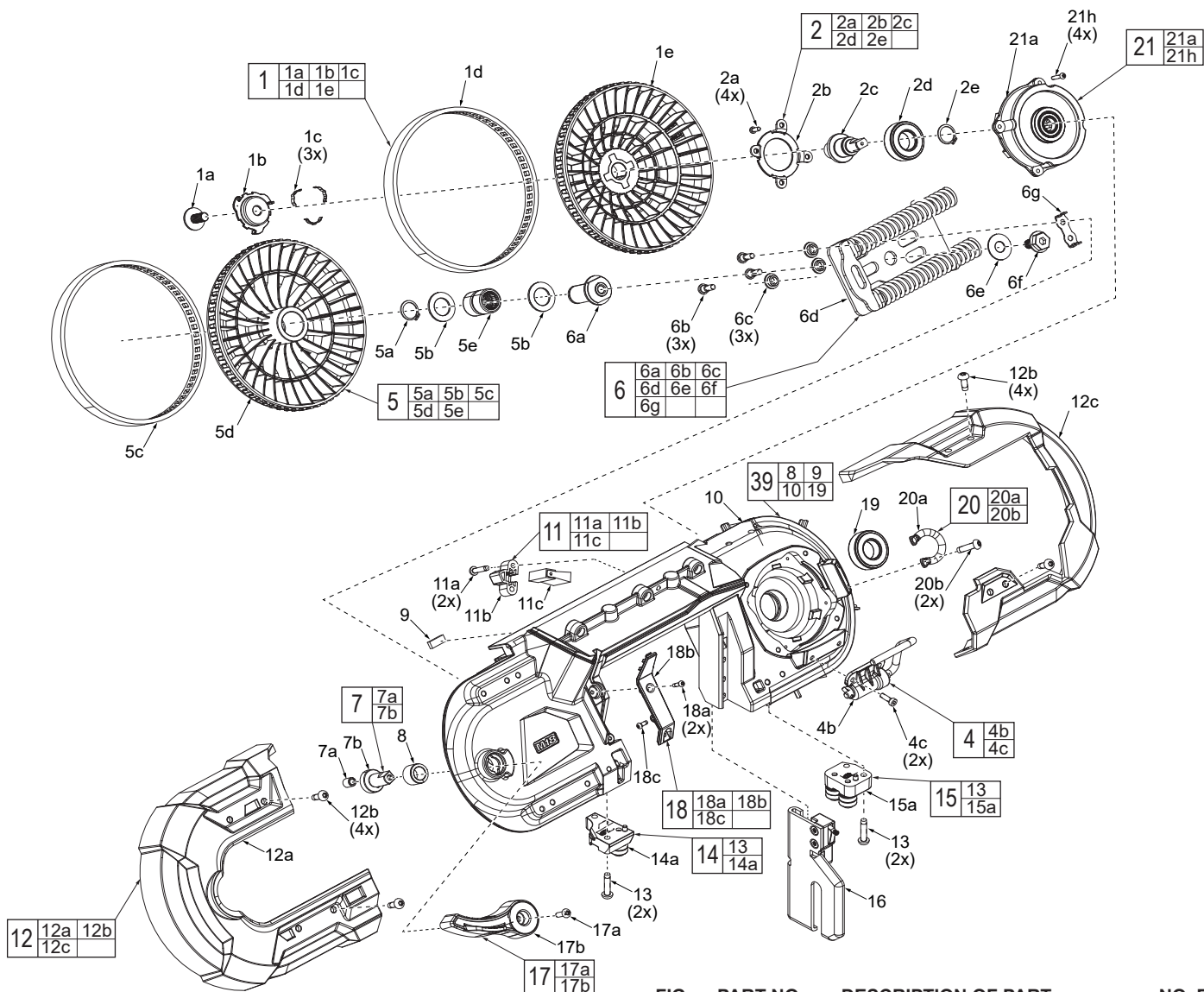


FIG.	PART NO.	DESCRIPTION OF PART	NO. REQ.
1	28-95-2745	Rear Pulley Kit	(1)
1a	06-82-0985	5/16-28-UNC-2A x 15mm TH Hex Screw	(1)
1b	-----	Reamer Retaining Washer	(1)
1c	-----	Reamer Detent Spring Plate	(3)
1d	45-69-0010	Pulley Tire	(1)
1e	-----	Rear Pulley with Insert	(1)
2	38-50-6555	Output Shaft Retaining Kit	(1)
2a	05-74-0740	M3.5 x 8mm Pan Hd. M Screw	(4)
2b	-----	Retaining Plate	(1)
2c	-----	Output Shaft	(1)
2d	-----	Ball Bearing	(1)
2e	34-60-0009	Retaining Ring	(1)
4	14-36-0085	Hang Hook Kit	(1)
4b	-----	Hang Hook Bracket Assembly	(1)
4c	05-78-0910	M4 x 12mm Cap Hd. Hex Socket Screw	(2)
5	28-95-2740	Front Pulley Kit	(1)
5a	34-60-1400	Snap Ring	(1)
5b	45-88-7165	Pulley Hub Washer	(2)
5c	45-69-0010	Pulley Tire	(1)
5d	-----	Front Pulley	(1)
5e	-----	Needle Bearing	(2)
6	42-28-0570	Tensioning Mechanism Kit	(1)
6a	-----	Front Pulley Shaft	(1)
6b	-----	Shoulder Screw	(3)
6c	-----	Tension Bushing	(3)
6d	42-18-0285	Blade Tension Mechanism	(1)
6e	-----	Thrust Washer	(1)
6f	-----	5/16-18 x 9/16" Screw	(1)
6g	-----	Wear Plate	(1)
7	36-10-0915	Cam Shaft Kit	(1)
7a	-----	Cam Bushing	(1)

FIG.	PART NO.	DESCRIPTION OF PART	NO. REQ.
7b	-----	Cam Shaft	(1)
8	-----	Bushing	(1)
9	44-52-0120	Blade Backing Pad	(1)
10	-----	Deck	(1)
11	44-60-0295	Tire Cleaning Brush Kit	(1)
11a	-----	8-32 x 3/4" Pan Hd. Tapt. T-20 Screw	(2)
11b	-----	Tire Cleaning Brush Cover	(1)
11c	-----	Tire Cleaning Brush	(1)
12	31-15-5535	Shroud Kit	(1)
12a	-----	Front Shroud	(1)
12b	06-82-5314	10-24 x 1/2" Pan Hd. Tapt. T-25 Screw	(8)
12c	-----	Rear Pulley Shroud	(1)
13	06-82-5574	10-24 x 7/8" Pan Hd. Tapt. T-25 Screw	(4)
14	42-28-0051	Front Blade Guide Assembly	(1)
14a	-----	Front Blade Guide	(1)
15	42-28-0052	Rear Blade Guide Assembly	(1)
15a	-----	Rear Blade Guide	(1)
16	45-16-0035	Shoe Assembly	(1)
17	30-58-0085	Tension Lever Kit	(1)
17a	-----	8-32 x .48 Pan Hd. M Screw T-20	(1)
17b	-----	Tension Lever	(1)
18	23-28-0285	LED Housing Kit	(1)
18a	-----	M3 x 11mm Pan Hd. Tapt. T-10 Screw	(2)
18b	-----	LED Housing	(1)
18c	-----	M3 x 8mm Pan Hd. Tapt. T-10 Screw	(1)
19	-----	Ball Bearing	(1)
20	43-74-0740	Tether Hook Kit	(1)
20a	-----	Tether Hook	(1)
20b	-----	M5 x 18mm Pan Hd. Tapt. T-25 Screw	(2)
21	14-29-0380	Gear Kit	(1)
21a	-----	Gear Assembly	(1)
21h	05-74-0117	M3 x 14mm Pan Hd. M Screw T-10	(4)
39	28-90-0315	Deck Service Assembly	(1)

As an aid to reassembly, take notice of wire routings and position in wire guides and traps while dismantling tool.

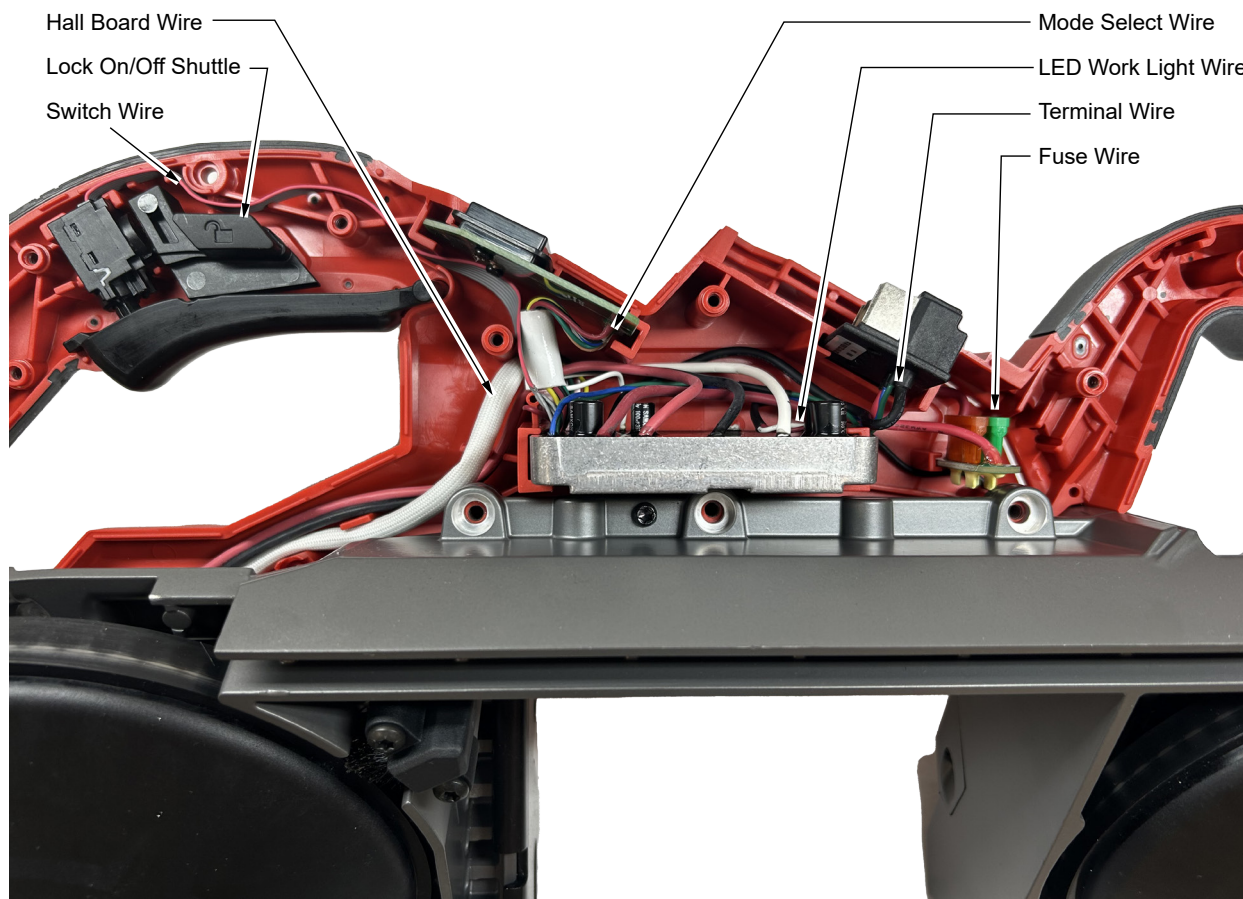
Be sure that all components of the electronics kit are seated firmly and squarely in the housing recesses.

Avoid pinched wires, be sure that all wires and sleeves are pressed completely down in wire guides and traps.

Prior to securing the housing cover onto the housing support, be sure that there are no interferences.

Before installing the battery, check for proper functionality of shuttle and triggers.

Install battery and depress switch triggers to assure tool is operating properly.



**NOTE**

Regarding parts to receive thread locking sealant: Place one to two drops of the recommended Loctite® thread locking sealant (or the equivalent) to the threads of parts shown prior to installation.

**NOTE**

Regarding parts to be lubricated: Apply a light coating of grease to all highlighted parts shown prior to installation. Reference the key below for grease types.

**LUBRICATION:**

- = DECH 5157 Grease, (49-08-0016)
- = LOCTITE® SF 7649, then LOCTITE® AA 326
- = 263 Red LOCTITE® (44-22-0130)
- = LOCTITE® LB 8008 C5-A®

