



SERVICE PARTS LIST

BULLETIN NO.
54-49-8400

SPECIFY CATALOG NO. AND SERIAL NO. WHEN ORDERING PARTS		REVISED BULLETIN	DATE
PACKOUT™ Rolling Storage			May 2025
CATALOG NO.	SERIAL NUMBER	WIRING INSTRUCTION	

48-22-8426	PACKOUT™ Rolling Tool Box	Page 1
48-22-8410	PACKOUT™ Flat Dolly	Page 3
48-22-8415	PACKOUT™ 2 Wheel Dolly	Page 4
48-22-8428	PACKOUT™ Rolling Tool Chest	Page 5
48-22-8420	PACKOUT™ Rolling Tool Drawer	Page 6
48-22-8027	Low-Profile Handle for PACKOUT™ Instructions	Page 7

00 0 **EXAMPLE:**
Component Parts (Small #) Are Included
When Ordering The Assembly (Large #).

48-22-8426 PACKOUT™ Rolling Tool Box

FIG.	PART NO.	DESCRIPTION OF PART	NO. REQ.
2		Screw	(2)
3	48-22-8027	Retractable Handle Service Assembly	(1)
4		Screw	(2)
5	43-62-8426	Side Handle Svc. Kit (Contains 2 Side Handles and 4 Pins)	(1)
6		Pin	(4)
7	48-22-8098	Wheel Svc. Kit (Contains 2 Wheels and 2 Locking Hex Nuts)	(1)
8		Locking Hex Nut	(2)
9	44-20-8400	Latch Service Assembly (Set of 2)	(1)
10	31-01-8400	Storage Tray	(1)
11	43-44-8400	Lid Gasket (Not Shown)	(1)
12	42-12-8426	Axle Svc. Kit (Contains 1 Axle and 2 Locking Hex Nuts)	(1)

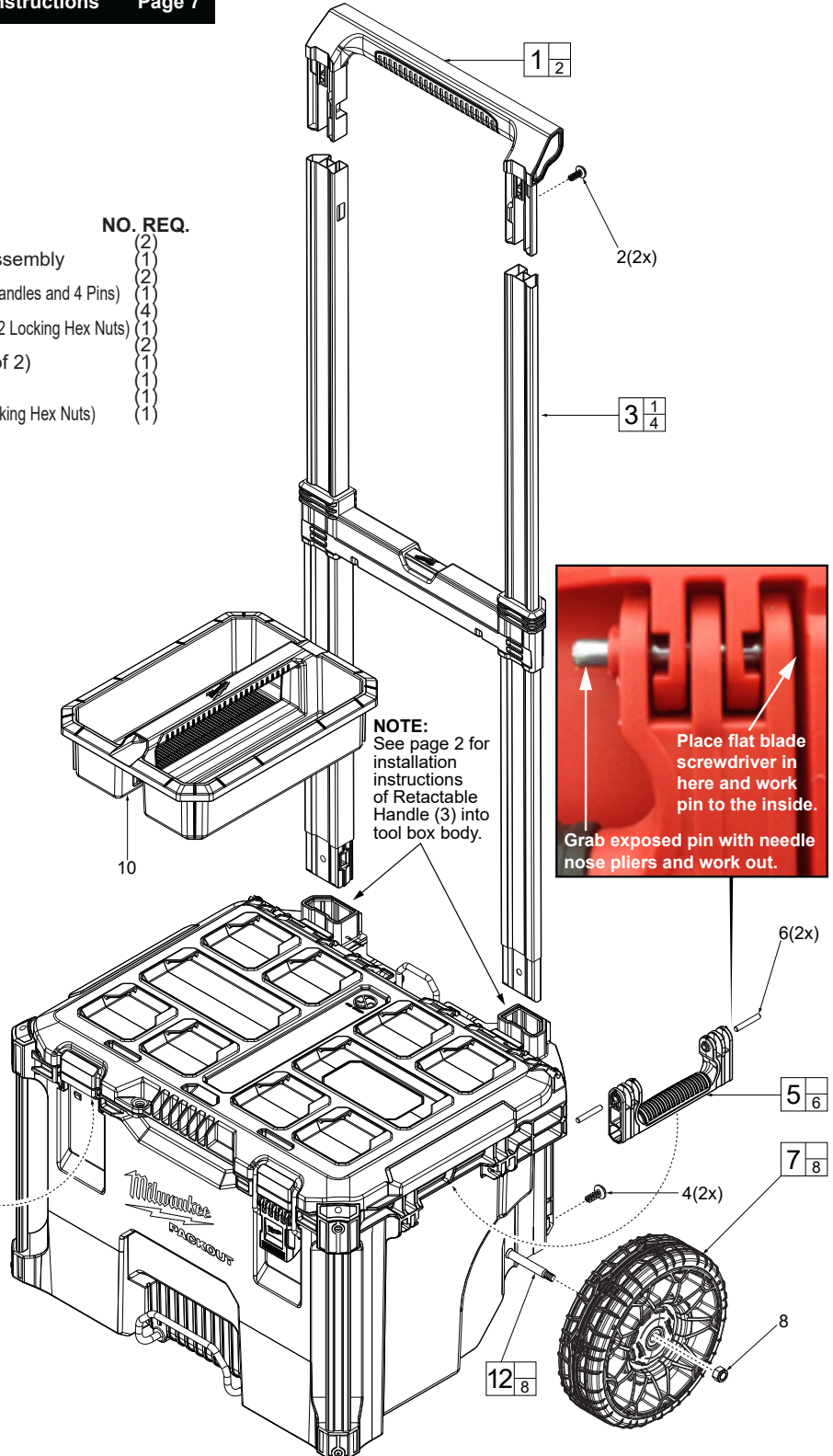


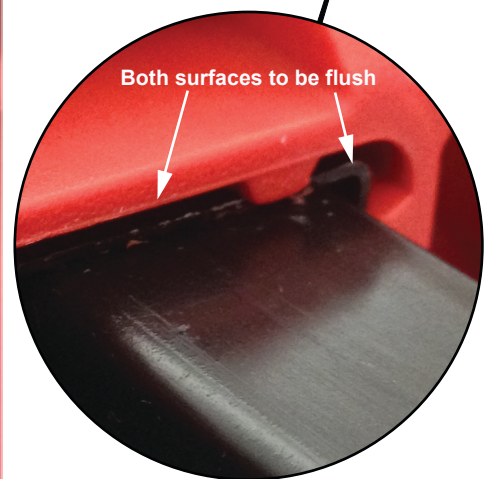
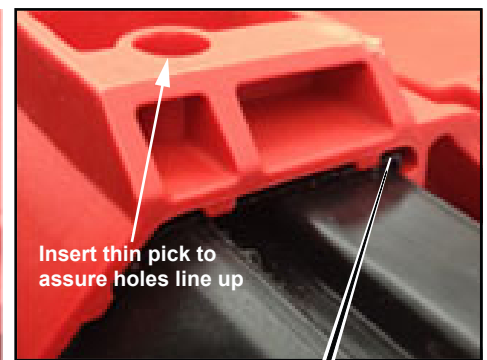
As an aid to removing a damaged Latch Assembly (9), use two large flat blade screwdrivers. Push blades between parts as shown. Twist both screwdrivers at same time to force the blades into opening and work the latch assembly over the two locking tabs.

To install a new latch assembly, position entire latch assembly over locking tabs with the two top lugs partially inserted in 'catch cavity' of main housing. Engage latch bar onto lid and gently press latch lever to slide assembly over two locking tabs and into place.

This removal and installation process will be the same where other service latches are offered in this system.

MILWAUKEE TOOL • www.milwaukeetool.com
13135 W. LISBON RD., BROOKFIELD, WI 53005
Drwg. 10

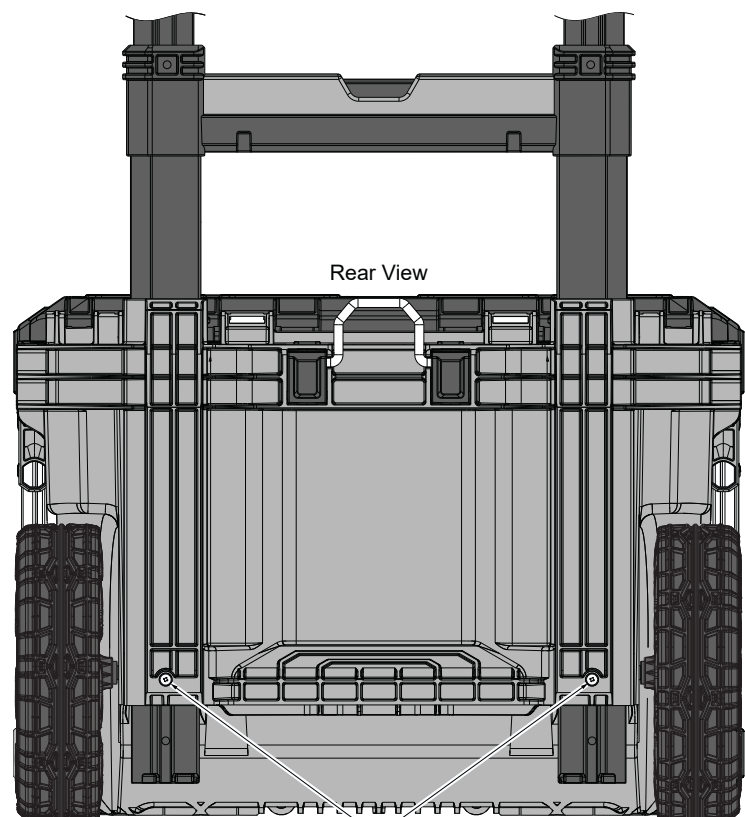




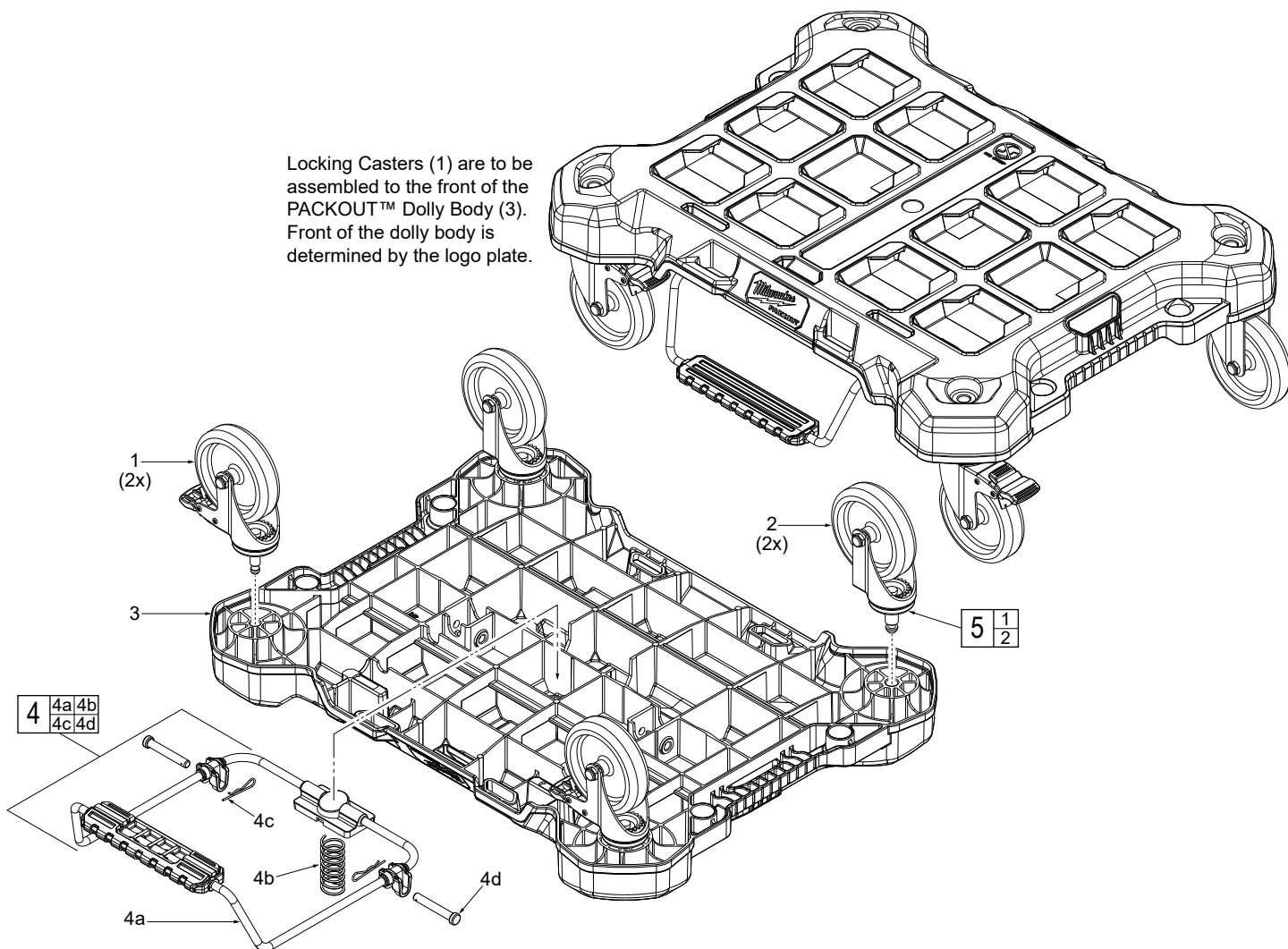
As an aid to installation, collapse the Retractable Handle Assembly (3).

Properly orient the assembly and insert both sides into tool box channels.

Holes of Retractable Handle Assembly (3) must line up with holes on the back of tool box body prior to securing with screws (4).

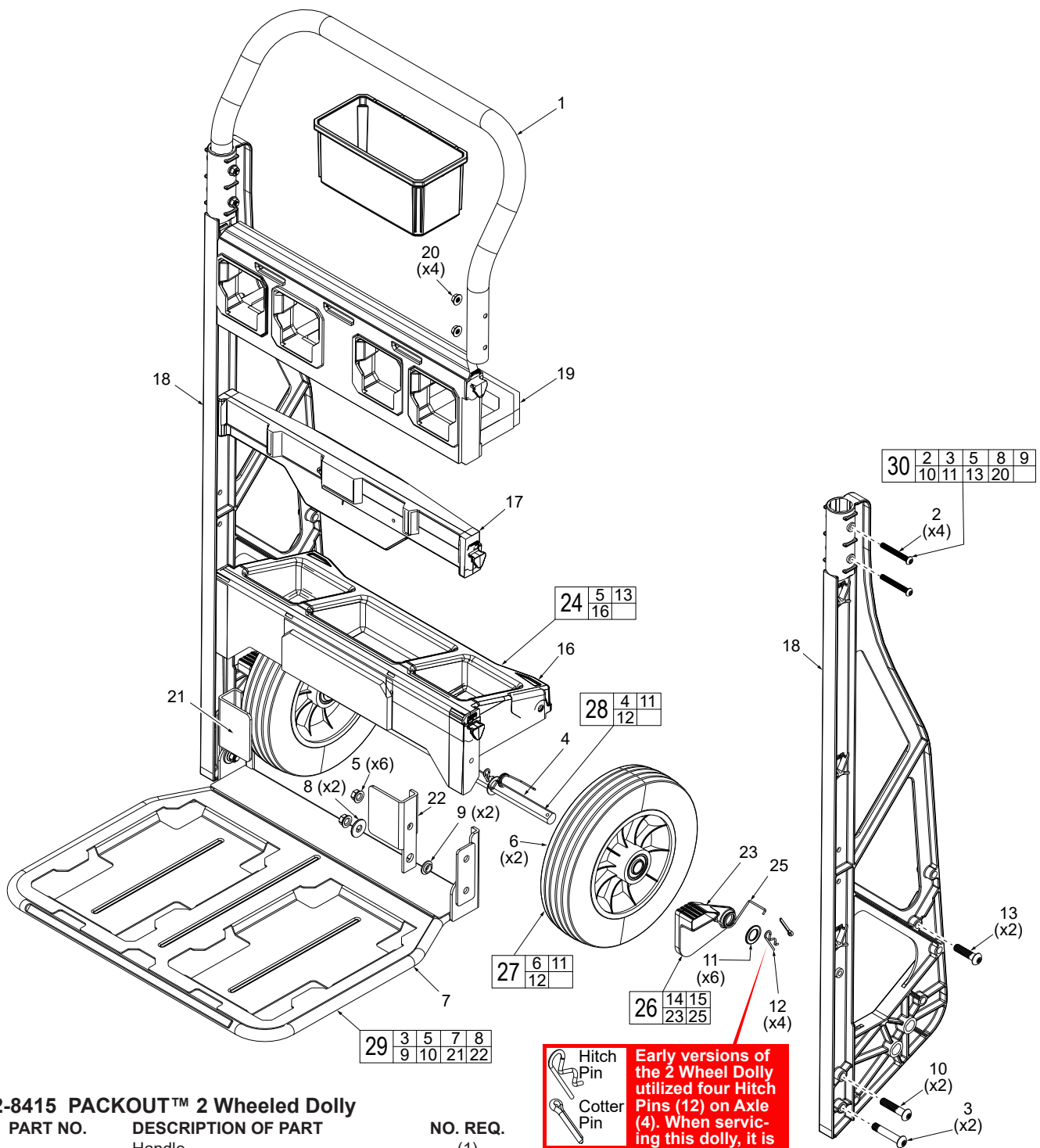


Screws (4)



48-22-8410 PACKOUT™ Flat Dolly

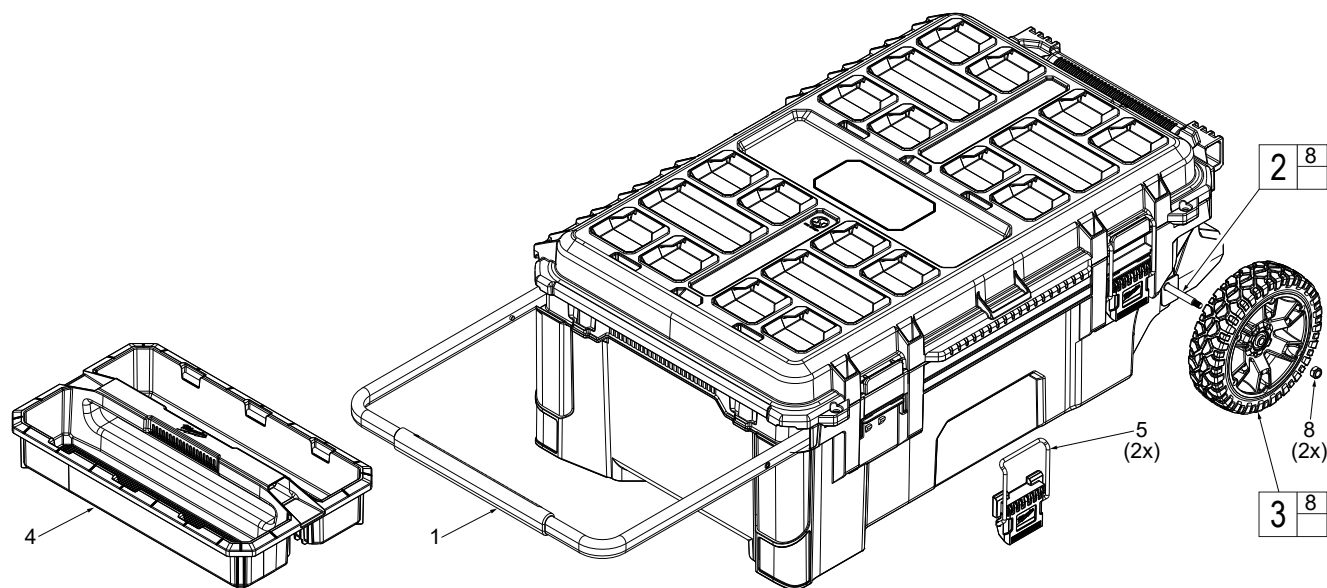
FIG.	PART NO.	DESCRIPTION OF PART	NO. REQ.
1	-----	Locking Swivel Caster	(2)
2	-----	Swivel Caster	(2)
3	-----	Dolly Base	(1)
4	14-04-8410	Dolly Foot Brake Kit	(1)
4a	-----	Dolly Foot Brake	(1)
4b	-----	Spring	(1)
4c	-----	Cotter Pin	(2)
4d	-----	Retaining Pin	(2)
5	45-94-8410	Swivel Caster Kit (Set of 4)	(1)



48-22-8415 PACKOUT™ 2 Wheeled Dolly

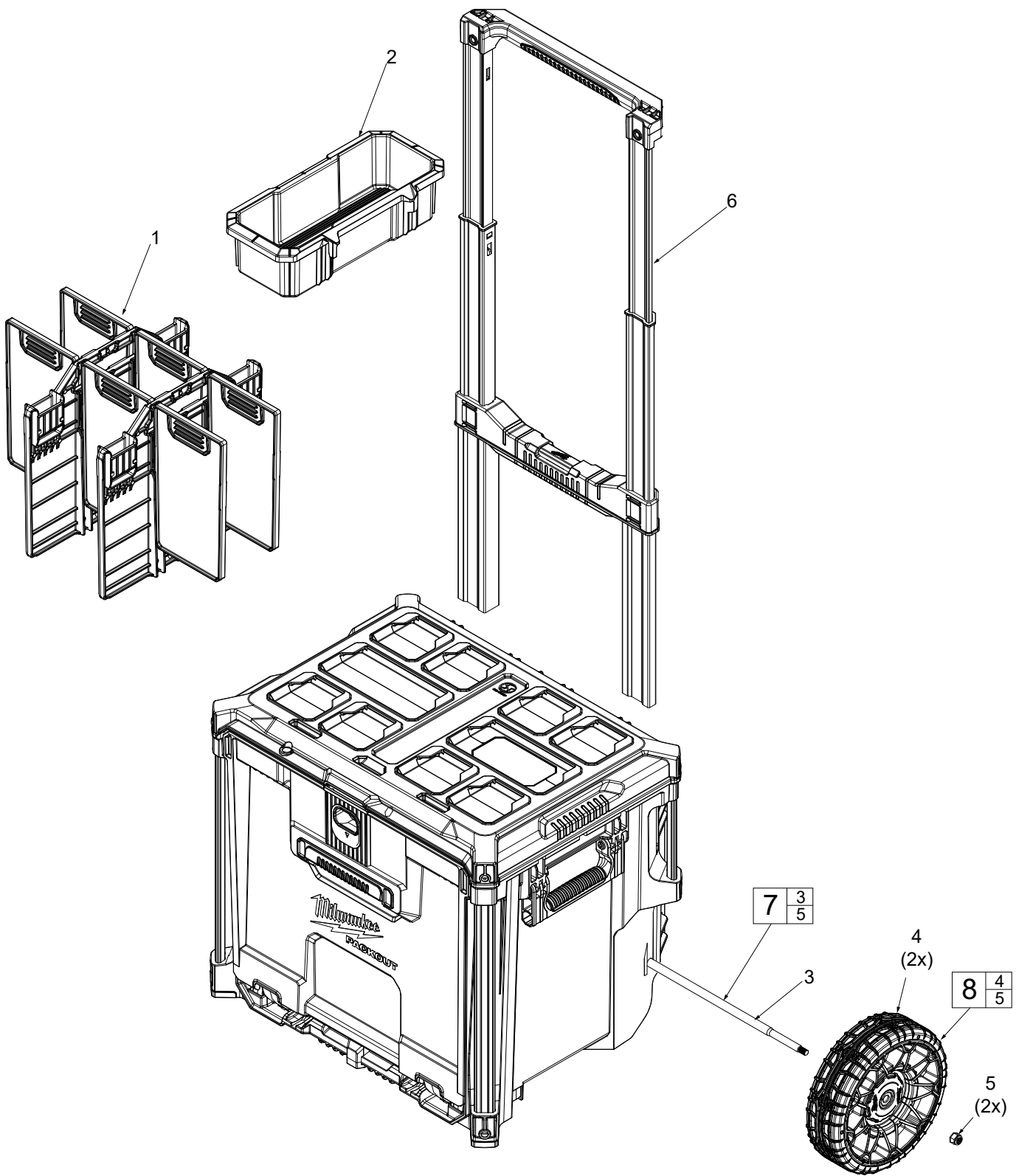
FIG.	PART NO.	DESCRIPTION OF PART	NO. REQ.
1	-----	Handle	(1)
2	-----	20 x 1.875" Bolts	(4)
3	-----	3/8-16 x 2 Bolts	(2)
4	-----	Axle	(1)
5	-----	3/8-16 Lock Nut	(6)
6	-----	Wheel	(2)
7	-----	Base Plate	(1)
8	-----	Washer	(2)
9	-----	Nylon Shoulder Washer	(2)
10	-----	3/8-16 x 1.75" Bolts	(2)
11	-----	5/8" Bushing Washers	(6)
12	-----	Cotter Pin	(4)
13	-----	3/8-16 x 1.5" Bolts	(2)
14	-----	Right Spring (Not Shown)	(1)
15	31-52-8415A	Toe Plate Lock Right (Not Shown)	(1)
16	31-01-8415	Bottom Tray	(1)
17	31-86-8415	Logo Cross Member	(1)
18	-----	Side Frame	(2)
19	31-10-8415	PACKOUT Cross Member	(1)
20	-----	Handle Nut	(4)
21	-----	Right Lock/Fender Assembly	(1)

FIG.	PART NO.	DESCRIPTION OF PART	NO. REQ.
22	-----	Left Lock/Fender Assembly	(1)
23	-----	Toe Plate Lock Left (Not Shown)	(1)
24	31-01-8415	Bottom Tray Kit	(1)
25	-----	Left Spring (Not Shown)	(1)
26	31-52-8415	Toe Plate Lock Kit	(1)
27	45-94-8415	Wheel Kit	(1)
28	42-12-8415	Axle Kit	(1)
29	42-36-8415	Toe Plate Kit	(1)
30	14-46-8415	Hardware Kit	(1)



48-22-8428 PACKOUT™ Rolling Tool Chest

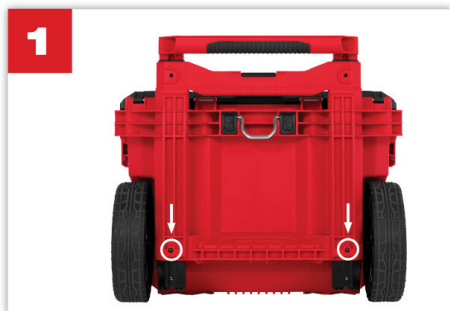
FIG.	PART NO.	DESCRIPTION OF PART	NO. REQ.
1	43-62-8428	Handle Service Kit (Handle and 2 Screws)	(1)
2	42-12-8426	Axle Service Kit (Axle and 2 Nuts)	(1)
3	45-94-8426	Wheel Service Kit (2 Wheels)	(1)
4	31-01-8428	Tool Chest Tray	(1)
5	44-20-8428	Latch Service Kit (2 Latches)	(1)
7	43-44-8428	Lid Gasket (Not Shown)	(1)
8	-----	Hex Nut	(2)



48-22-8420 PACKOUT™ Rolling Drawer Tool Box

FIG.	PART NO.	DESCRIPTION OF PART	NO. REQ.
1	31-86-8420	Divider Kit (Contains 2 large and 6 small)	(1)
2	31-01-8420	Tray	(1)
3	-----	Axle	(1)
4	-----	Wheel	(2)
5	-----	Locking Hex Nut	(2)
6	48-22-8027	Low-Profile Handle	(1)
7	42-12-8420	Axle Kit (Contains 1 Axle and 2 Locking Hex Nuts)	(1)
8	48-22-8098	Wheel Kit (Contains 2 Wheels and 2 Locking Hex Nuts)	(1)

INSTALLATION



1
Locate both identified screws and remove them with a #2 Phillips screwdriver



2
Remove the existing handle from the PACKOUT™ Rolling Tool Box



3
Insert the new handle into the openings where the existing handle was removed



4
Using the original screws, fasten in the new handle