

# WIRING INSTRUCTIONS

**TITLE**

**12 VOLT "D"-HANDLE TOOLS**

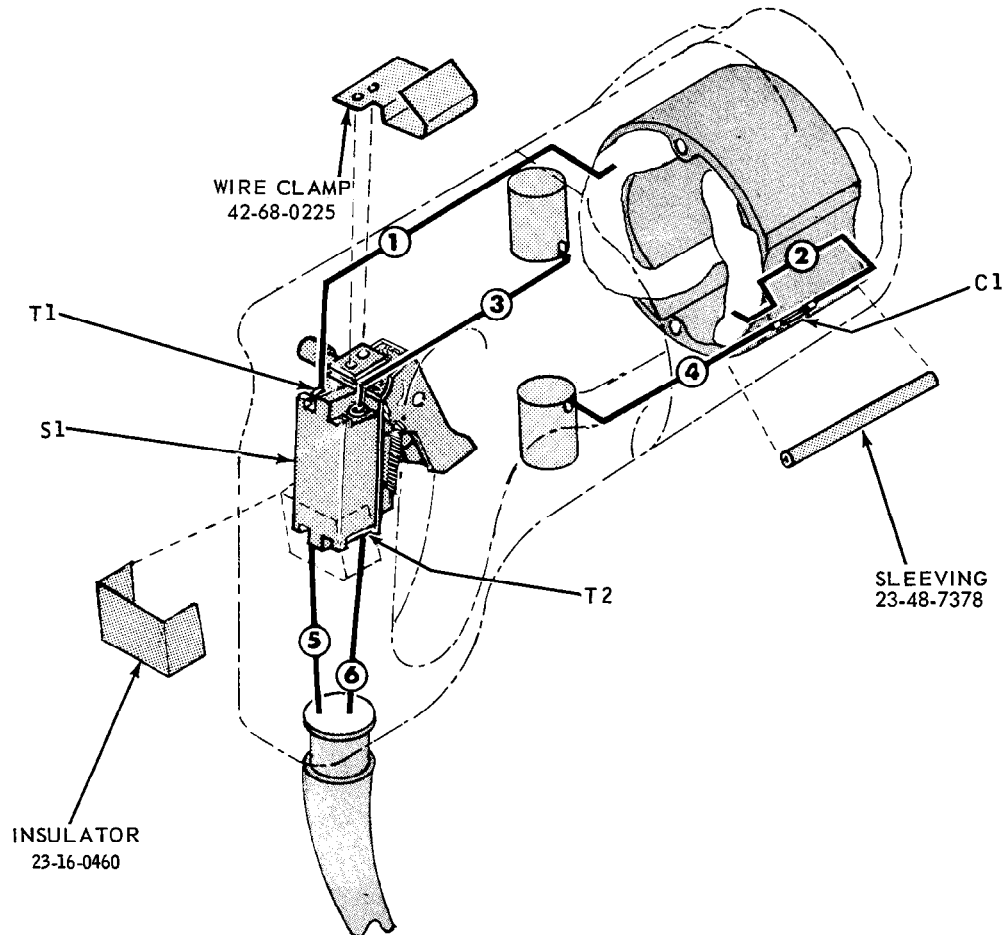
MILWAUKEE ELECTRIC TOOL CORP.

13135 WEST LISBON RD. BROOKFIELD, WIS

Date  
April '72

**BULLETIN**  
**58-01-0140**

Wire No. 1 runs above  
field mounting boss.



USE LOCK WASHERS UNDER  
ALL SWITCH TERMINALS.

WHERE TERMINAL AND CONNECTOR COMBINATIONS ARE SPECIFIED, SEE ELECTRICAL PARTS CHART  
FOR PART NO. AND QUANTITY AND DRAWING FOR ACTUAL HOOK-UP

NOTE:  
ALL LEADS MUST BE HELD TO  $\pm 1/8''$   
ALL FIELD LEADS TO BE MEASURED FROM  
AND PERPENDICULAR TO LAMINATIONS.  
ALL LEAD LENGTHS ARE BEFORE STRIPPING

## WIRING SPECIFICATIONS

Wire Color	Wire No.	Ga.	Lgth. in.	Terminal				Connector				Wire Color	Wire No.	Ga.	Lgth. in.	Terminal				Connector			
				T1	T2	T3	T4	C1	C2	C3	C4					T1	T2	T3	T4	C1	C2	C3	C4
White	1	Fld.	7-3/4	X																			
White	2	Fld.	4					X															
Black	3	Brsh.	5	X																			
Black	4	Brsh.	2-3/8					X															
Black	5	Cord	3-1/8		X																		
White	6	Cord	3-1/8		X																		

## Electrical Parts

TERMINAL DESCRIPTION		
Code	Part No.	Qty.
T1	23-74-0330	2
T2	23-74-0210	2
CONNECTOR DESCRIPTION		
Code	Part No.	Qty.
C1	23-74-0200	2
SWITCH DESCRIPTION		
Code	Part No.	Qty.
S1	23-66-0230	1