

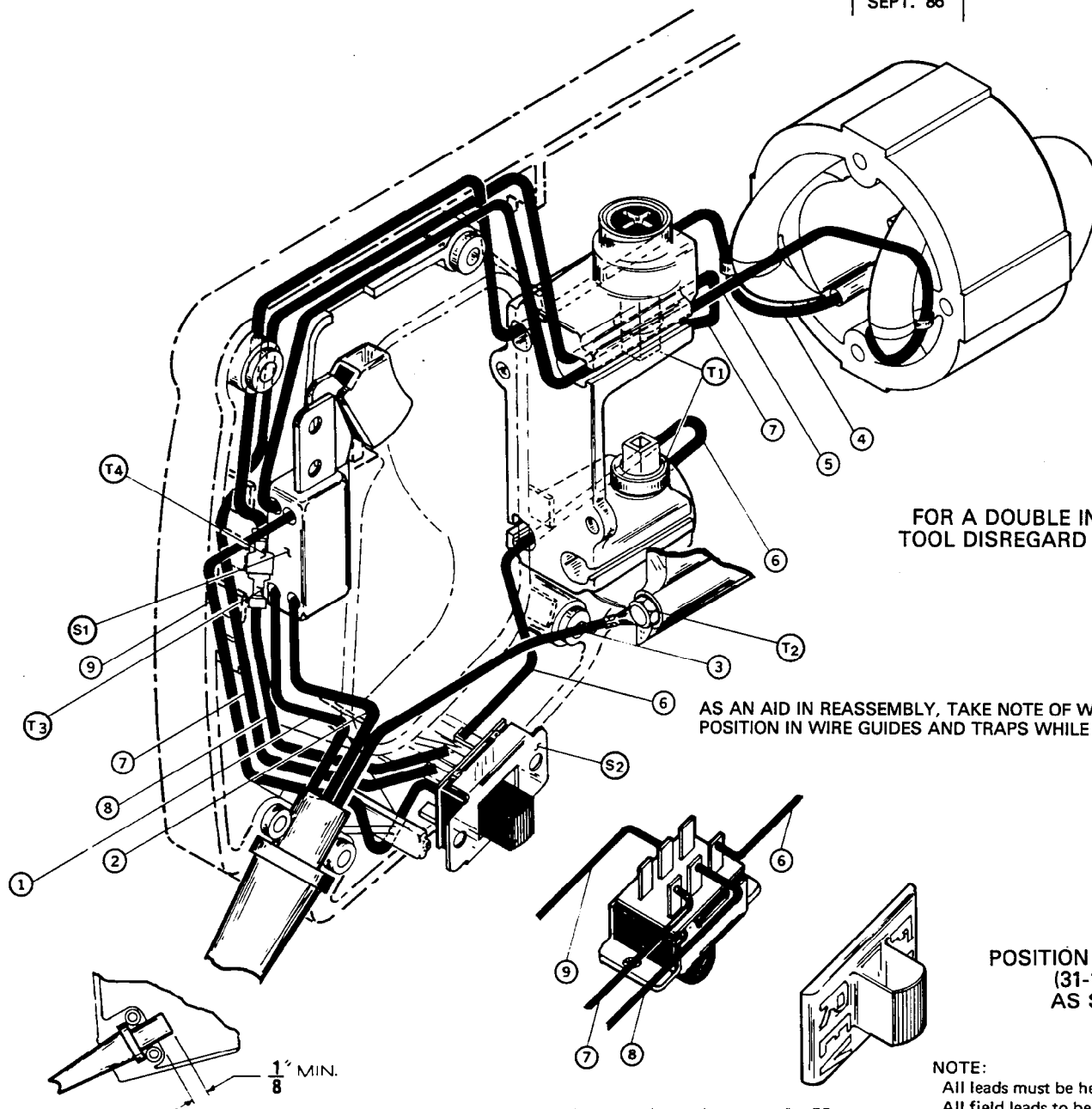
# WIRING INSTRUCTIONS

**TITLE TRIPLE REDUCTION REVERSING "D" HANDLE TOOLS**

MILWAUKEE ELECTRIC TOOL CORP. 13135 WEST LISBON RD. BROOKFIELD, WIS

DATE  
SEPT. '86

**BULLETIN  
58-01-0213**



FOR A DOUBLE INSULATED  
TOOL DISREGARD WIRE NO. 3

AS AN AID IN REASSEMBLY, TAKE NOTE OF WIRE ROUTING AND  
POSITION IN WIRE GUIDES AND TRAPS WHILE DISMANTLING TOOL.

POSITION SWITCH CAP  
(31-12-0195)  
AS SHOWN

NOTE:  
All leads must be held to  $\pm 1/8''$ .  
All field leads to be measured from  
and perpendicular to laminations.  
All lead lengths are before stripping.

WIRING SPECIFICATIONS				
Wire No.	Wire Color	Origin or Gauge	Length	Terminals, Connectors and 1 or 2 End Wire Preparation
1	BLACK	CORD	2-11/16"	STRIP 3/8" AND TIN.
2	WHITE	CORD	2-11/16"	STRIP 3/8" AND TIN.
3	GREEN	CORD	4-1/2"	STRIP 3/16" FOR T2.
4	RED	FIELD	8-1/2"	STRIP 3/16" FOR T4.
5	BROWN	FIELD	8-1/2"	STRIP 3/8" AND TIN.
6	WHITE	—	—	COMPONENT OF SWITCH ASSEMBLY S2.
7	YELLOW	—	—	COMPONENT OF SWITCH ASSEMBLY S2.
8	WHITE	—	—	COMPONENT OF SWITCH ASSEMBLY S2.
9	YELLOW	—	—	COMPONENT OF SWITCH ASSEMBLY S2.

TERMINAL DESCRIPTION		
Code	Part No.	Qty.
T1	22-44-0090	2
T2	23-74-0896	1
T3	23-74-0430	1
T4	23-74-0440	1

CONNECTOR DESCRIPTION		
Code	Part No.	Qty.
S1	23-66-0167	1
S2	23-66-1453	1