

WIRING INSTRUCTIONS

TITLE

POLISHERS

MILWAUKEE ELECTRIC TOOL CORP. 13135 WEST LISBON RD. BROOKFIELD, WIS.

DATE _____

Feb.'90

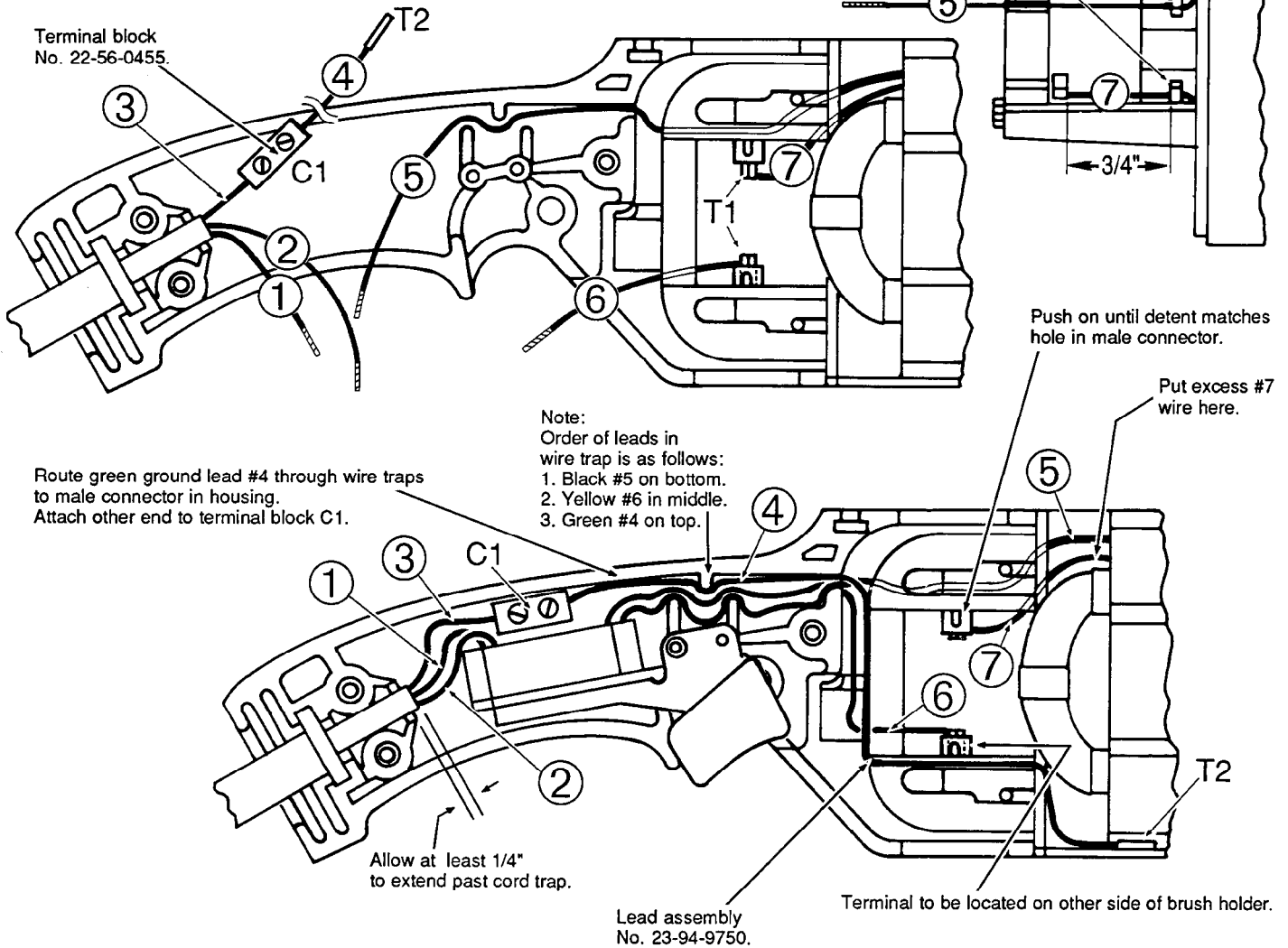
BULLETIN

58-01-0295

DOUBLE INSULATED-

disregard ground wire #3, terminal block (C1), ground lead #4 and ground lead terminal T2.

Route black field lead #5
through wiretraps to switch.
Note wire traps(3 places)



WIRING SPECIFICATIONS

Wire No.	Wire Color	Origin or Gauge	Length	Terminals, Connectors and 1 or 2 End Wire Preparation
1	Black	Cord	1-1/2"	Strip 3/8" And Tin.
2	White	Cord	1-1/2"	Strip 3/8" And Tin.
3	Green	Cord	1-1/2"	Strip 3/16" And Tin For C1.
4	Green	23-94-9750	9"	Strip 3/16" For T2.
				Strip 3/16" And Tin For C1.
5	Black	Field	7"	Strip 3/8" And Tin.
6	Yellow	Brush	7"	Strip 3/8" And Tin / Strip 1/8" For T1.
7	Yellow	Field	1-3/4"	Strip 1/8" For T1.

NOTE:

All leads must be held to $\pm 1/8"$.
All field leads to be measured from
and perpendicular to laminations.
All lead lengths are before stripping.

TERMINAL DESCRIPTION

Code	Part No.	Qty.
T1	23-74-0750	2
T2	23-74-0810	1
CONNECTOR DESCRIPTION		
C1	22-56-0455	1