

WIRING INSTRUCTIONS

TITLE NON-REVERSING LARGE DRILL

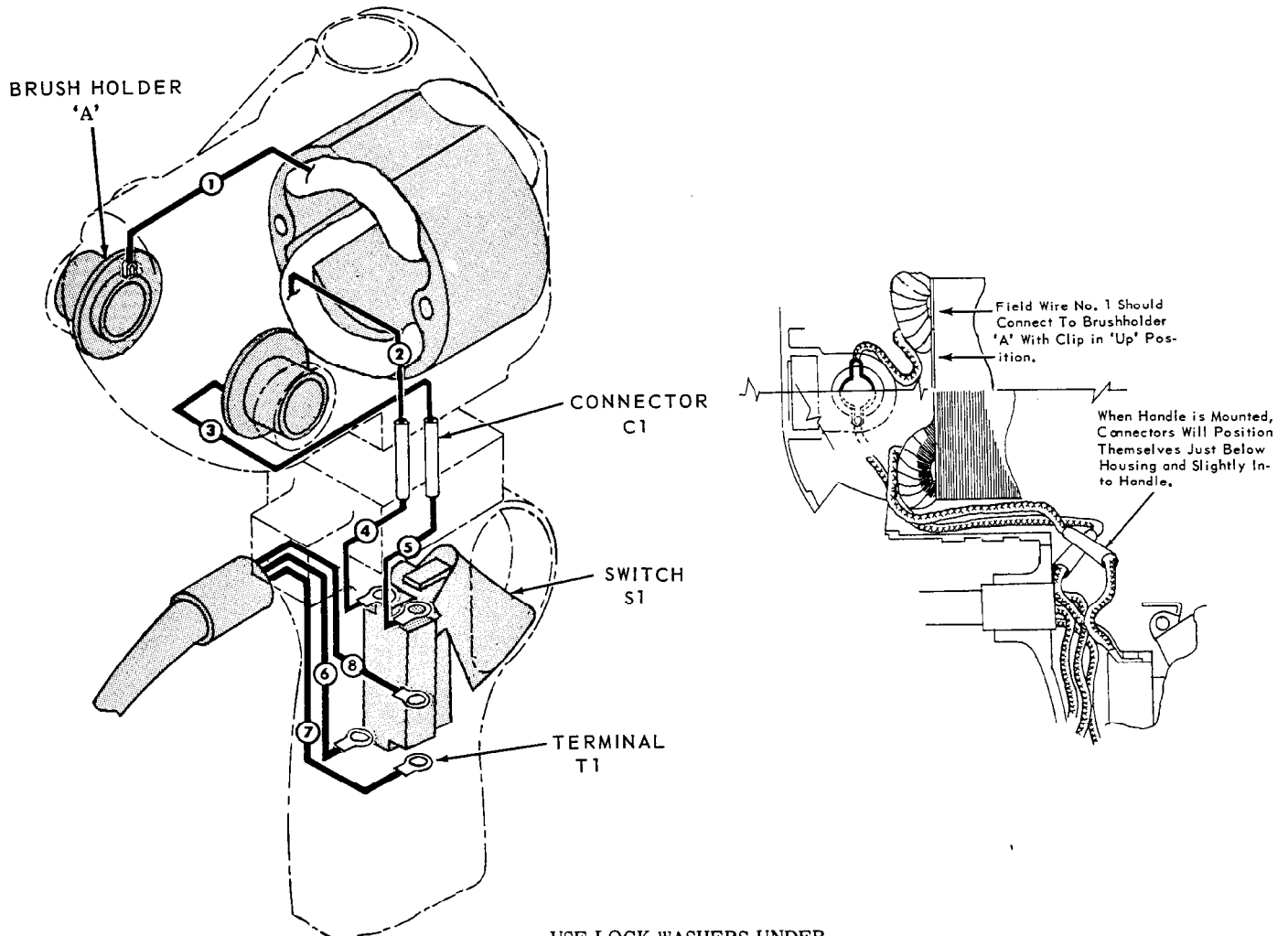
MILWAUKEE ELECTRIC TOOL CORP.

13135 WEST LISBON RD. BROOKFIELD, WIS.

Date

Jan. '74

BULLETIN
58-01-0600



USE LOCK WASHERS UNDER
ALL SWITCH TERMINALS.

Where Terminal and Connector Combinations are Specified, See Electrical Parts Chart
For Part No. and Quantity. See Drawing For Actual Hookup.

WIRING SPECIFICATIONS

WIRING SPECIFICATIONS																							
Wire Color	Wire No.	Ga.	Lgth. in.	Terminal				Connector				Wire Color	Wire No.	Ga.	Lgth. in.	Terminal				Connector			
				T1	T2	T3	T4	C1	C2	C3	C4					T1	T2	T3	T4	C1	C2	C3	C4
Yellow	1	Fld.	2-3/8									Black	6	Cord	6	X							
Black	2	Fld.	5-5/8					X				White	7	Cord	6	X							
												Green	8	Cord	3-1/4	X							
Yellow	3	16	6-1/4					X															
Yellow	4	16	4	X																			
Yellow	5	16	4	X																			

Electrical Parts

TERMINAL DESCRIPTION

Code	Part No.	Qty.
T1	23-74-0050	5

CONNECTOR DESCRIPTION

Code	Part No.	Qty.
C1	23-74-0360	2

SWITCH DESCRIPTION

Code	Part No.	Qty.
S1	Refer to Parts List	1