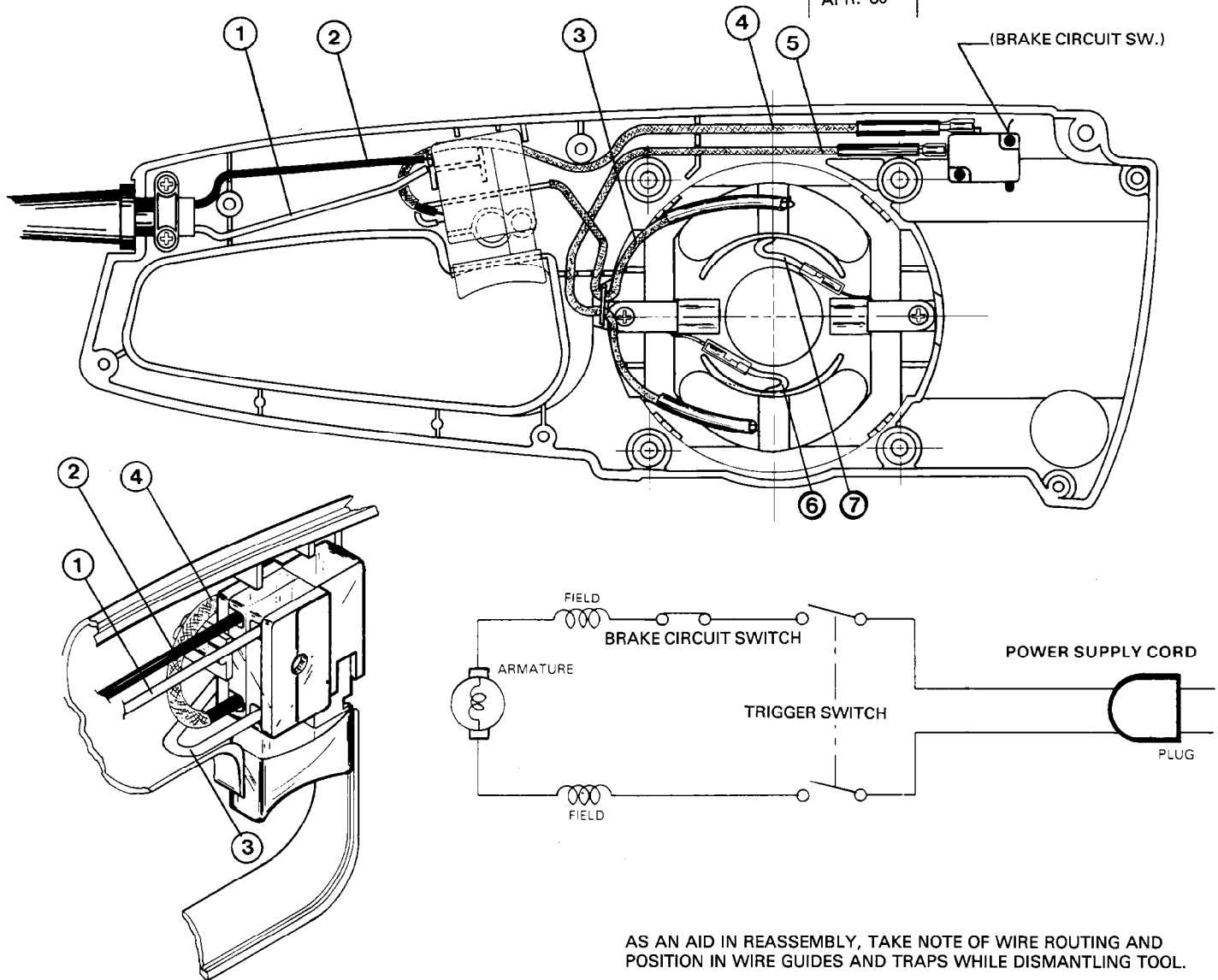


TITLE		CHAIN SAW	BULLETIN
MILWAUKEE ELECTRIC TOOL CORP.		13135 WEST LISBON RD. BROOKFIELD, WIS.	58-01-0955
		DATE APR. '86	



WIRING SPECIFICATIONS				
Wire No.	Wire Color	Origin or Gauge	Length	Terminals, Connectors and 1 or 2 End Wire Preparation
1	WHITE	CORD	3-1/2 ± 1/8	1/2" STRIP AND TIN
2	BLACK	CORD	3-1/2 ± 1/8	1/2" STRIP AND TIN
3	WHITE	FIELD	11 ± 1/8	1/2" STRIP AND TIN
4	BLACK	JUMPER	—	T1—3/8" STRIP AND TIN
5	YELLOW	FIELD	—	T1—3/8" STRIP AND TIN
6	WHITE	FIELD	—	T2—3/8" STRIP AND TIN
7	WHITE	FIELD	—	T2—3/8" STRIP AND TIN

**NOTE:**

All leads must be held to  $\pm 1/8"$ .  
All field leads to be measured from  
and perpendicular to laminations.  
All lead lengths are before stripping.

TERMINAL DESCRIPTION		
Code	Part No.	Qty.
T1	AMP 3-350816-2	1
T2	AMP 3-350820-2	1

CONNECTOR DESCRIPTION		
Code	Part No.	Qty.