

WIRING INSTRUCTIONS

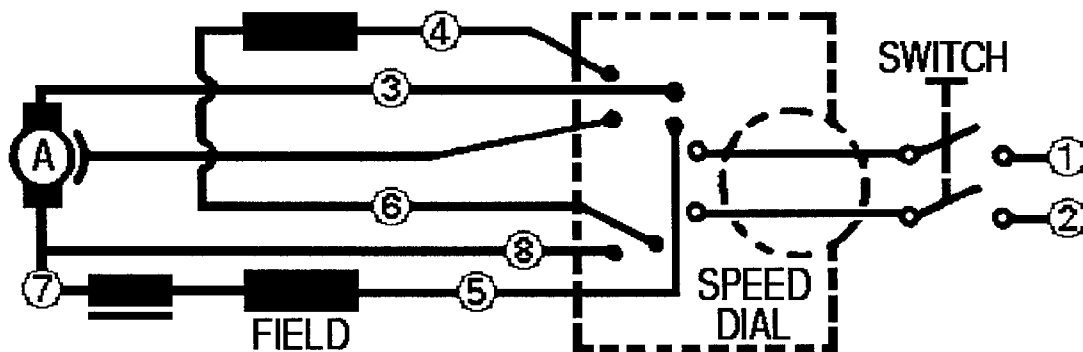
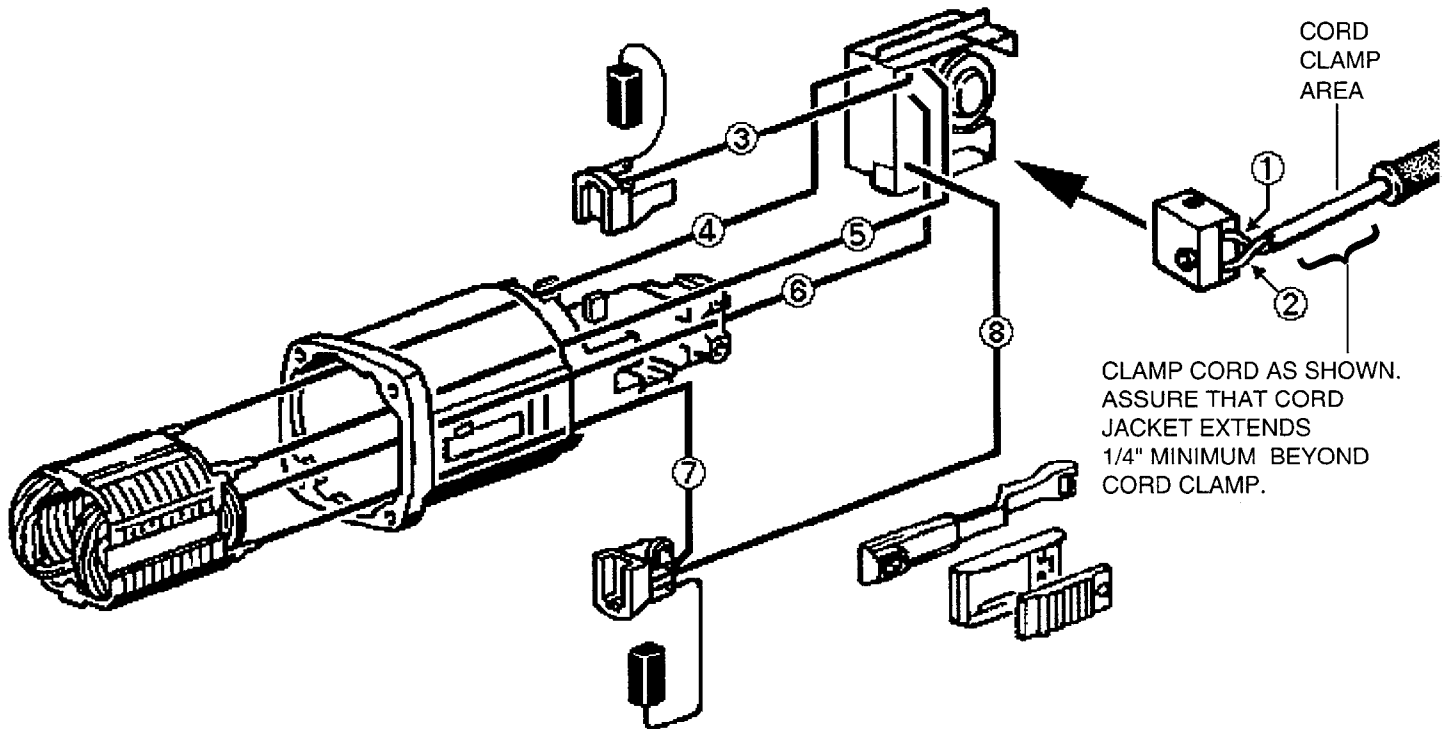
TITLE

ORBITAL JIG SAW

MILWAUKEE ELECTRIC TOOL CORP. 13135 WEST LISBON RD. BROOKFIELD, WIS.

DATE
Feb. '96

BULLETIN
58-01-1170



WIRING SPECIFICATIONS

Wire No.	Wire Color	Origin or Gauge	Length	Terminals, Connectors and 1 or 2 End Wire Preparation
1	BLACK	CORD	----	STRIP 1/4" FOR T1
2	WHITE	CORD	----	STRIP 1/4" FOR T1
3	BLACK	DIAL ASSY.	----	COMPONENT OF SPEED DIAL ASSEMBLY
4	BLUE	DIAL ASSY.	----	COMPONENT OF SPEED DIAL ASSEMBLY
5	RED	DIAL ASSY.	----	COMPONENT OF SPEED DIAL ASSEMBLY
6	VIOLET	DIAL ASSY.	----	COMPONENT OF SPEED DIAL ASSEMBLY
7	RED	DIAL ASSY.	----	COMPONENT OF SPEED DIAL ASSEMBLY
8	BROWN	DIAL ASSY.	----	COMPONENT OF SPEED DIAL ASSEMBLY

BULK LEAD WIRE - BULLETIN 58-01-0003

NOTE:
All leads must be held to $\pm 1/16"$.
All lead lengths are before stripping.

TERMINAL DESCRIPTION

Code	Part No.	Qty.
T1	23-74-0155	2

CONNECTOR DESCRIPTION

--	--	--