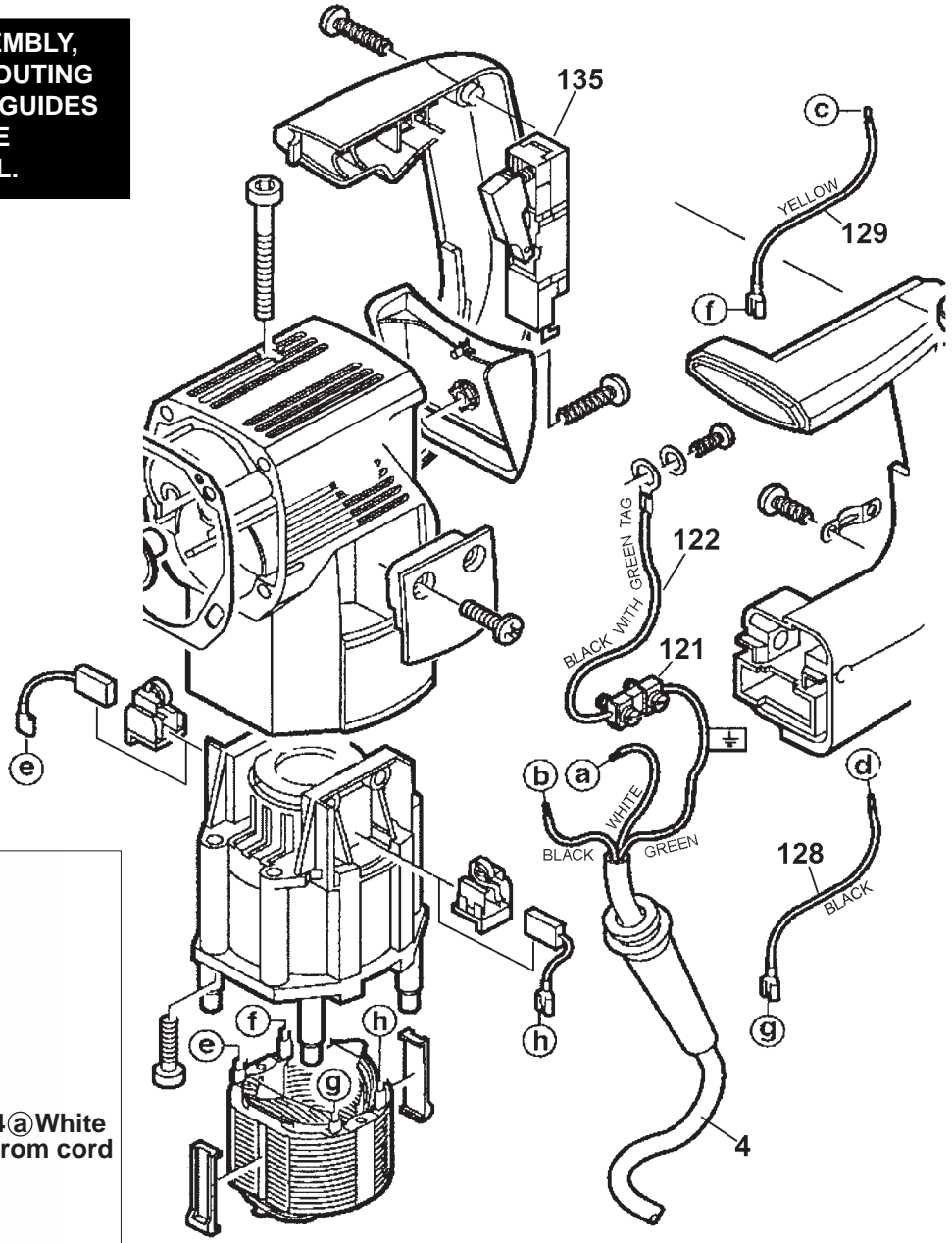


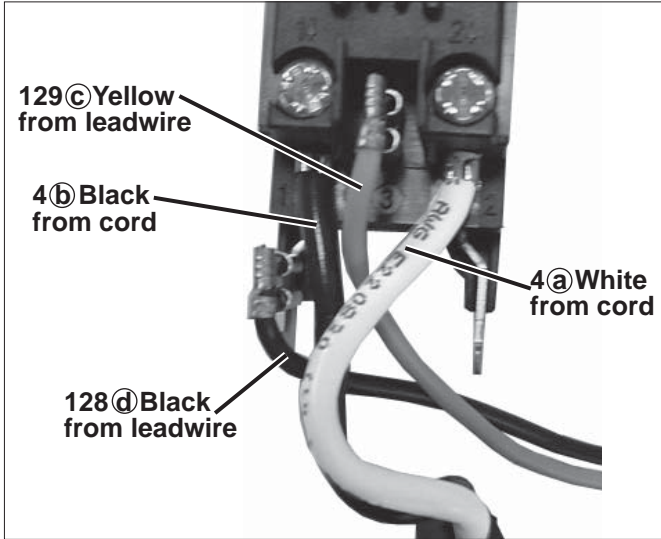
WIRING INSTRUCTIONS

TITLE 5359-21 409B (409A Series II) 1-1/8" ROTARY HAMMER	BULLETIN 58-01-1861
MILWAUKEE ELECTRIC TOOL CORP. 13135 WEST LISBON RD. BROOKFIELD, WIS.	DATE Jan. 2007

AS AN AID TO REASSEMBLY,
TAKE NOTE OF WIRE ROUTING
AND POSITION IN WIRE GUIDES
AND TRAPS WHILE
DISMANTLING TOOL.



23-66-0012 Switch



WIRING SPECIFICATIONS				
Wire No.	Wire Color	Origin or Gauge	Length	Terminals, Connectors and 1 or 2 End Wire Preparation
4a	White	Cord	----	Component of cord set
4b	Black	Cord	----	Component of cord set
4c	Green	Cord	----	Component of cord set
122	Black	23-94-1034	----	Leadwire assembly with green tag.
128	Black	23-94-0003	----	Leadwire assembly
129	Yellow	23-94-1037	----	Leadwire assembly

NOTE:
All leads must be held to $\pm 1/16"$.
All lead lengths are before stripping.

TERMINAL DESCRIPTION		
Code	Part No.	Qty.

CONNECTOR DESCRIPTION		
Code	Part No.	Qty.

BULK LEAD WIRE - BULLETIN 58-01-0003