



## SERVICE PARTS LIST

BULLETIN NO.  
PN0004827

SPECIFY CATALOG NO. AND SERIAL NO. WHEN ORDERING PARTS		REVISED BULLETIN	DATE
<b>NEXUS™ DEDICATED DEBRIS SEPARATOR</b>			June 2025
CATALOG NO. 0990-20	SERIAL NO. R43A	WIRING INSTRUCTION	

00 0

**EXAMPLE:**

Component Parts (Small #)  
Are Included When Ordering  
The Assembly (Large #).

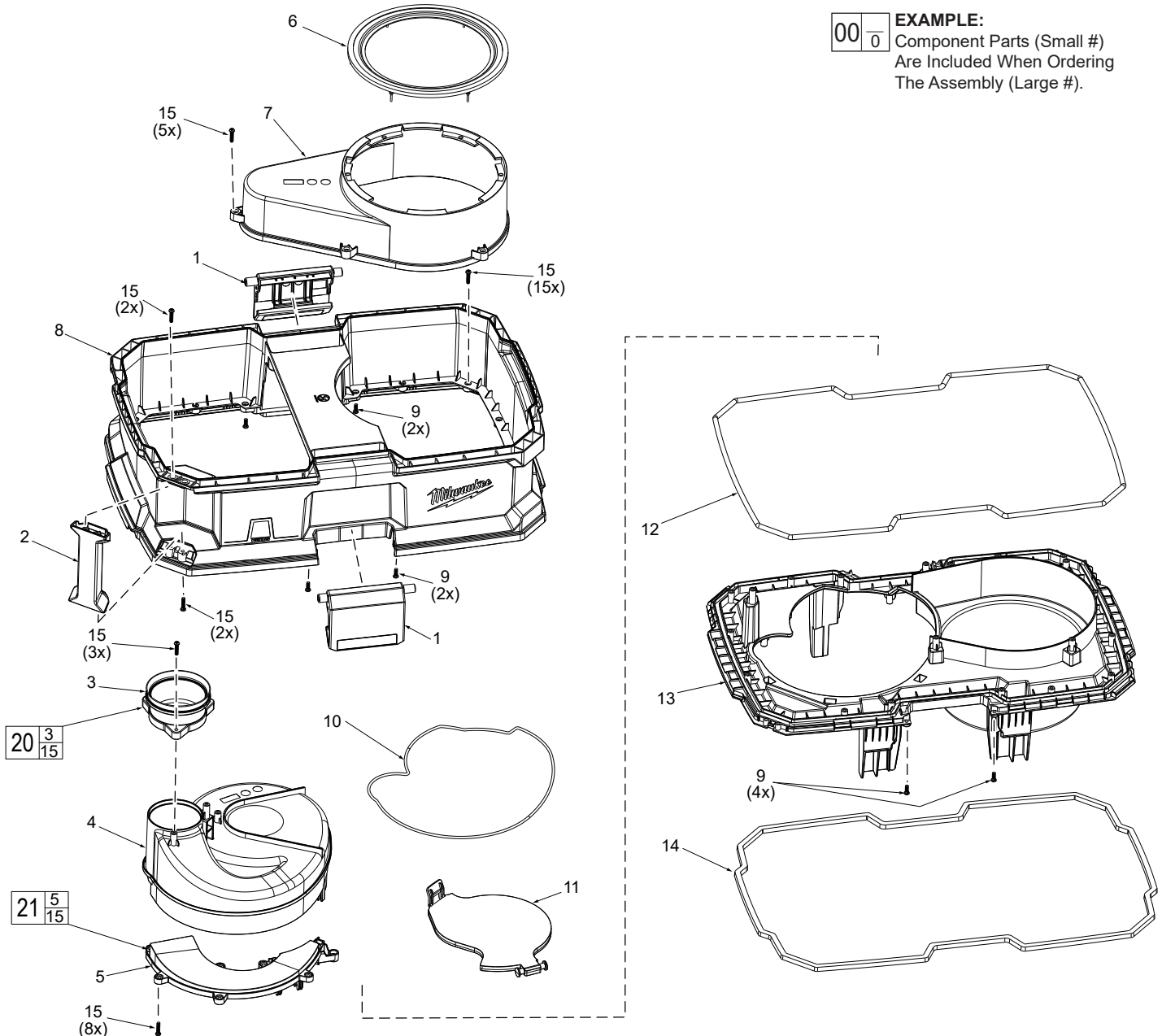
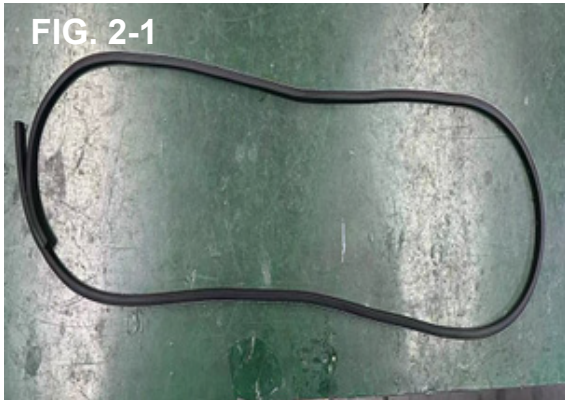


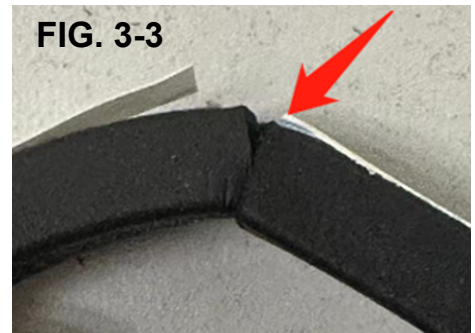
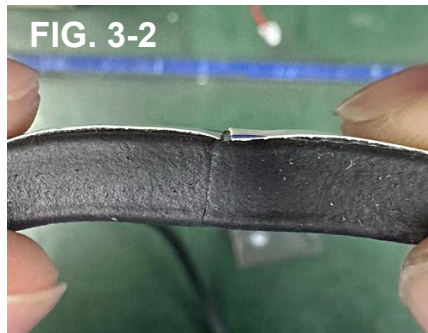
FIG.	PART NO.	DESCRIPTION OF PART	NO. REQ.
1	-----	Latch	(2)
2	-----	Handle	(1)
3	-----	Inlet Assembly	(1)
4	-----	Cyclone Cover	(1)
5	-----	Inlet Plate	(1)
6	43-44-0004	Outlet Cover Seal	(1)
7	-----	Outlet Cover	(1)
8	-----	Housing	(1)
9	05-88-0042	M4 x 10mm PH Tamperproof Screw	(4)
10	-----	Gasket	(1)
11	31-15-0403	Cyclone Plate	(1)
12	-----	Housing Gasket	(1)
13	-----	Bottom Plate	(1)
14	43-44-0003	Bottom Plate Gasket	(1)
15	05-88-0003	M4 x 16mm PH Tamperproof Screw	(38)
20	14-46-0735	Inlet Kit	(1)
21	14-46-0736	Inlet Plate Kit	(1)
22	12-20-9901	Service Nameplate (not shown)	(1)

## BOTTOM SEAL REPLACEMENT INSTRUCTIONS

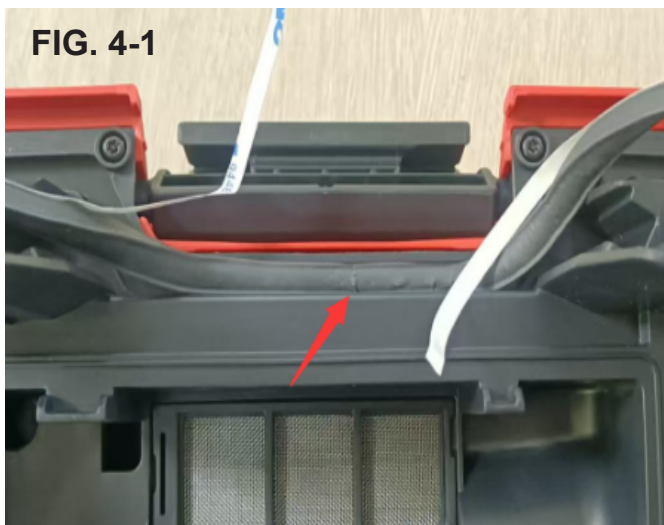
1. Remove the original seal and clean the groove.



2. Remove seal and unroll. Make sure seal is not twisted. (FIG. 2-1 is correct, FIG. 2-2 is incorrect).



3. Apply small amount of glue to one end of seal, coating evenly (FIG. 3-1). Align and press the ends together, holding for at least 5 seconds to ensure adhesion. Verify ends are aligned and attached. (FIG. 3-2 is correct, FIG. 3-3 is incorrect.)



4. Start installation with the joined end aligned with the center of the latch (FIG. 4-1). Peel off the protective film while attaching the seal into the slot of the base (FIG. 4-2).

**NOTE:** Make sure there is no lifting or breakage of the seal.