



SERVICE PARTS LIST

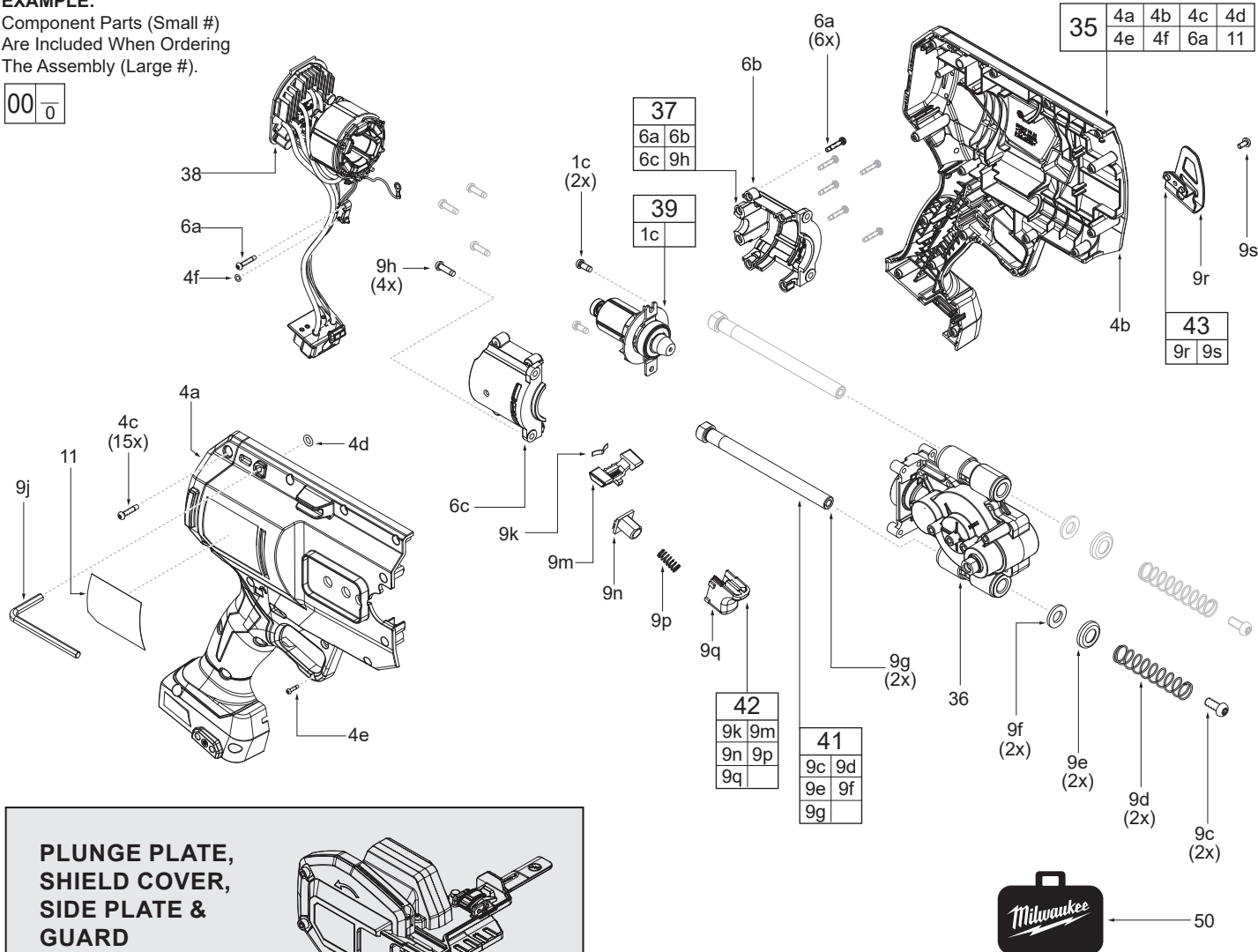
BULLETIN NO.
PN0005261

| SPECIFY CATALOG NO. AND SERIAL NO. WHEN ORDERING PARTS | | REVISED BULLETIN | DATE |
|--|---------|--------------------|----------|
| M18 FUEL™ 1/2" – 1" STEEL PIPE CUTTER | | | May 2025 |
| CATALOG NO. | 3469-20 | WIRING INSTRUCTION | |
| SERIAL NO. | R22A | See Page 4 | |

EXAMPLE:

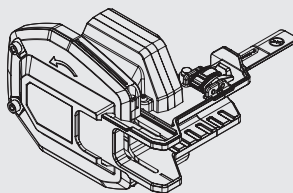
Component Parts (Small #)
Are Included When Ordering
The Assembly (Large #).

00 0



PLUNGE PLATE, SHIELD COVER, SIDE PLATE & GUARD

- See page 2



| FIG. | PART NO. | DESCRIPTION OF PART | NO. REQ. |
|------|------------|--|----------|
| 1c | 05-78-0105 | M4 x 10mm Pan Hd. Torx T-20 Screw | (2) |
| 4a | ----- | Housing Cover | (1) |
| 4b | ----- | Housing Support | (1) |
| 4c | 05-88-0122 | M3.5 x 16mm PH Torx Self Tapping Screw | (15) |
| 4d | 34-40-4480 | O-Ring | (1) |
| 4e | ----- | M2.3 x 9mm PH Torx T-8 B ST Screw | (1) |
| 4f | ----- | O-Ring for Trigger Switch | (1) |
| 6a | 06-82-6351 | M3 x 16mm PH Torx T-10 B ST Screw | (7) |
| 6b | ----- | Motor Housing Support | (1) |
| 6c | ----- | Motor Housing Cover | (1) |
| 9c | 05-81-0132 | M6 x 14mm PH Torx T-30 M Screw | (2) |
| 9d | ----- | Compression Spring | (2) |
| 9e | ----- | Dust Cover | (2) |
| 9f | ----- | Dust Felt | (2) |
| 9g | ----- | Guide Pin | (2) |
| 9h | 05-78-5316 | M4 x 14mm Torx T-20 Taptite Screw | (4) |
| 9j | 49-96-0600 | 3/16" Hex Key | (1) |
| 9k | ----- | Spring Plate | (1) |
| 9m | ----- | Forward & Reverse Shuttle | (1) |
| 9n | ----- | Spring Housing Switch | (1) |
| 9p | ----- | Trigger Spring | (1) |

| FIG. | PART NO. | DESCRIPTION OF PART | NO. REQ. |
|------|------------|-----------------------------------|----------|
| 9q | ----- | Linear Trigger Cap | (1) |
| 9r | 42-70-5151 | Belt Hook | (1) |
| 9s | 06-82-2500 | #6-32 PH Torx T-15 & Slot M Screw | (1) |
| 11 | 12-20-3469 | Service Nameplate | (1) |
| 35 | 31-50-3400 | Housing Kit | (1) |
| 36 | 14-29-3400 | Gearbox Assembly | (1) |
| 37 | 14-46-3402 | Motor Housing Kit | (1) |
| 38 | 14-20-3401 | Electronics Assembly | (1) |
| 39 | 16-01-3400 | Rotor Assembly | (1) |
| 41 | 14-46-3404 | Guide Pin & Spring Kit | (1) |
| 42 | 14-46-3403 | Trigger Kit | (1) |
| 43 | 42-70-0950 | Belt Clip Kit | (1) |
| 50 | 42-55-0081 | BMC - Blow Molded Case | (1) |

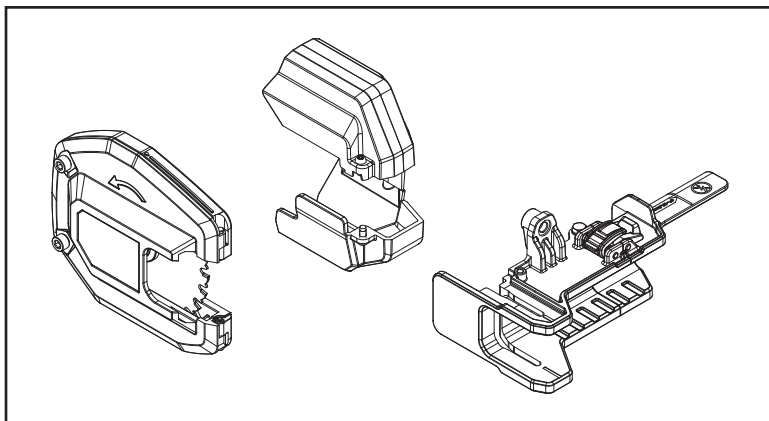
FIG.
11,12

SERVICE NOTES

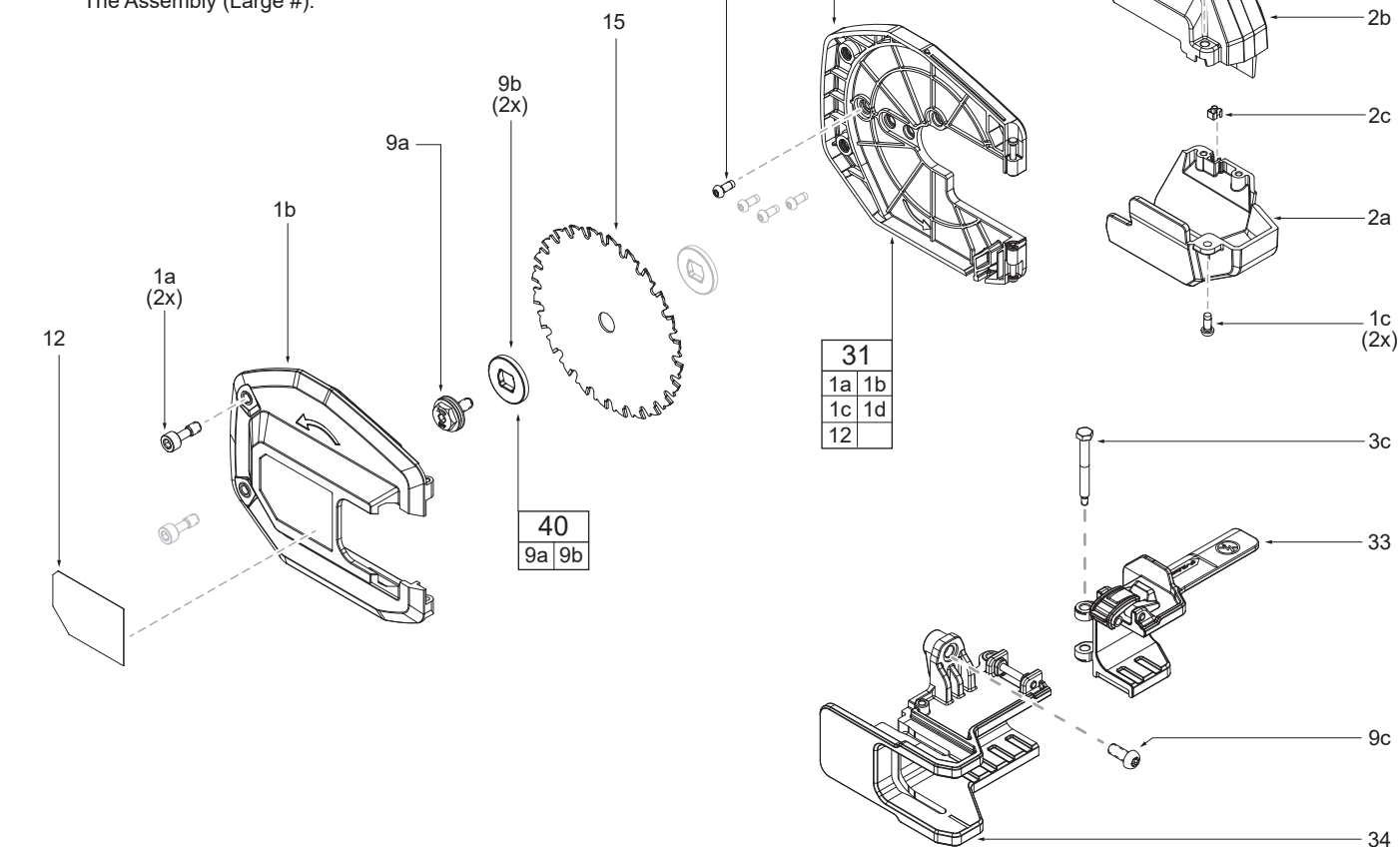
A clean, dry surface is essential for proper performance for any adhesive system. The area intended for application of any adhesive label or nameplate must be prepared by cleaning with isopropyl alcohol. The solvent is to be applied with a clean, lint free applicator and the surface allowed to dry before applying the label or nameplate.

SERVICE BILL OF MATERIAL (BOM) LISTING - Cont'd

Guard • Shield Cover • Plunge Plate & Side Grip



EXAMPLE:
Component Parts (Small #)
Are Included When Ordering
The Assembly (Large #).



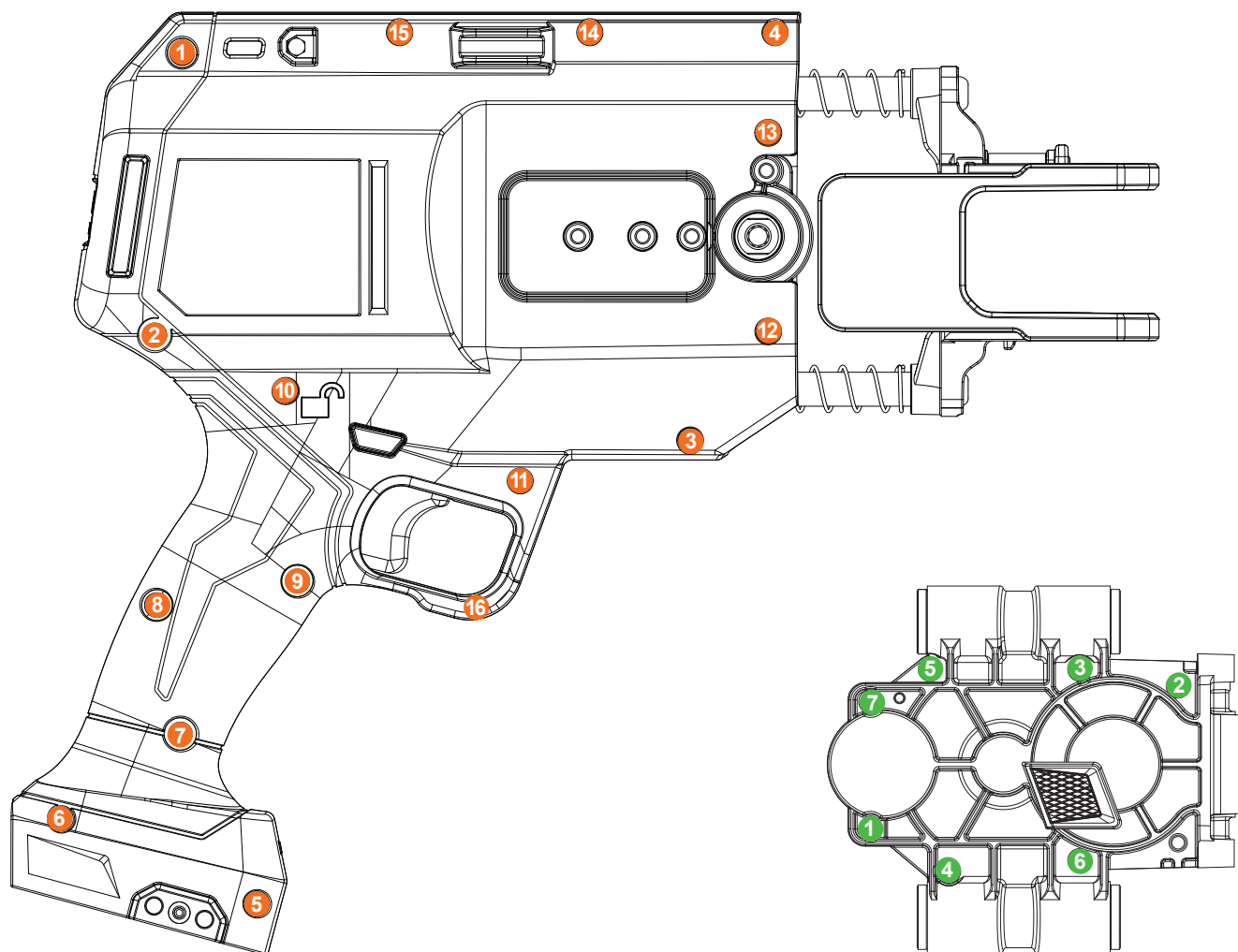
| FIG. | PART NO. | DESCRIPTION OF PART | NO. REQ. |
|------|------------|----------------------------------|----------|
| 1a | ----- | Guard Screw | (2) |
| 1b | ----- | Blade Guard (Right) | (1) |
| 1c | 05-78-0105 | M4 x 10mm PH T-20 Taptite Screw | (6) |
| 1d | ----- | Blade Guard (Left) | (1) |
| 2a | ----- | Bottom Shield Cover | (1) |
| 2b | ----- | Top Shield Cover | (1) |
| 2c | 44-60-5335 | Detent, Side Grip | (1) |
| 2d | ----- | M4 x 12mm PH T-20 ST Screw | (2) |
| 3c | 44-60-3400 | Folding Handle Slide Pin | (1) |
| 9a | ----- | M6 x SEMS Screw with Disc Spring | (1) |

| FIG. | PART NO. | DESCRIPTION OF PART | NO. REQ. |
|------|------------|--------------------------------|----------|
| 9b | ----- | Inner Flange | (2) |
| 9c | 05-81-0132 | M6 x 14mm PH Torx T-30 M Screw | (1) |
| 12 | 10-22-3400 | Warning Label | (1) |
| 15 | 48-40-4062 | Blade | (1) |
| 31 | 14-32-0365 | Guard Assembly | (1) |
| 32 | 14-46-3406 | Shield Cover Kit | (1) |
| 33 | 43-56-3400 | Side Grip Assembly | (1) |
| 34 | 44-70-3400 | Plunge Plate Assembly | (1) |
| 40 | 14-46-3401 | Blade Flange Kit | (1) |

SCREW FASTENING ORDER

Handle Housing • Gearcase

Please follow the screw sequence below when tightening and loosening the screws.



SCREW TORQUE SPECIFICATIONS

| FIG. | PART NO. | DESCRIPTION OF FASTENER | QTY | WHERE USED | SEAT TORQUE | |
|------|------------|-----------------------------------|-----|-----------------------|-------------|------------|
| | | | | | (kgf-cm) | (lb-in) |
| 1a | ----- | Guard Screw w/ THD. M6x1.0 Hex | 2 | Blade Guard (Right) | 30 ± 3 | 26 ± 2.6 |
| 1c | 05-78-0105 | M4 x 10mm PH T-20 Taptite Screw | 4 | Blade Guard (Left) | 23 ± 3 | 20 ± 2.6 |
| | | | 2 | Bearing Retainer | 23 ± 3 | 20 ± 2.6 |
| | | | 2 | Shield Cover | 19 ± 2 | 16.5 ± 1.7 |
| 2d | ----- | M4 x 12mm PH T-20 ST Screw | 2 | Shield Cover | 16 ± 2 | 13.8 ± 1.7 |
| 3c | 44-60-3400 | Folding Handle Slide Pin | 1 | Plunge Plate | 15 ± 2 | 13 ± 1.7 |
| 4c | 06-82-2025 | M3.5 x 16mm PH Self Tapping Screw | 15 | Housing Cover | 12 ± 2 | 17 ± 1.7 |
| 4e | ----- | M2.3 x 9mm PH Torx T-8 B ST Screw | 1 | Housing Cover | 3.5 ± 0.5 | 3 ± 0.4 |
| 6a | ----- | M3 x 16mm PH Torx T-10 B ST Screw | 6 | Motor Housing Support | 10 ± 2 | 8.6 ± 1.7 |
| | | | 1 | PCBA Electronics | 4 ± 0.5 | 3.5 ± 0.4 |
| 9a | ----- | M6 x SEMS Screw with Disc Spring | 1 | Inner Flange | 60 ± 5 | 52 ± 4.3 |
| 9c | 05-81-0132 | M6 x 14mm PH Torx T-30 M Screw | 2 | Plunge Plate | 85 ± 8 | 74 ± 6.9 |
| 9h | 05-78-5316 | M4 x 14mm Torx T-20 Taptite Screw | 4 | Motor Housing Cover | 19 ± 2 | 16.5 ± 1.7 |
| 9s | ----- | #6-32 PH Torx T-15 & Slot M Screw | 1 | Belt Hook | 16 ± 2 | 13.8 ± 1.7 |

LUBRICATION INSTRUCTIONS

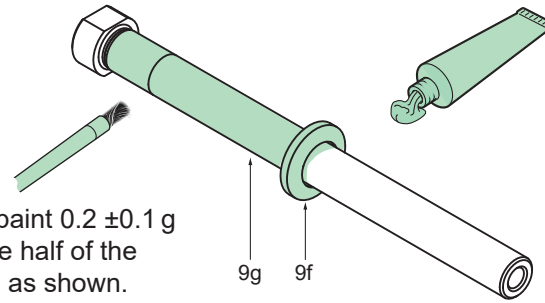
► Type "J" Grease

No. 49-08-4220, 1 lb can

Apply thin coat of grease to areas indicated.

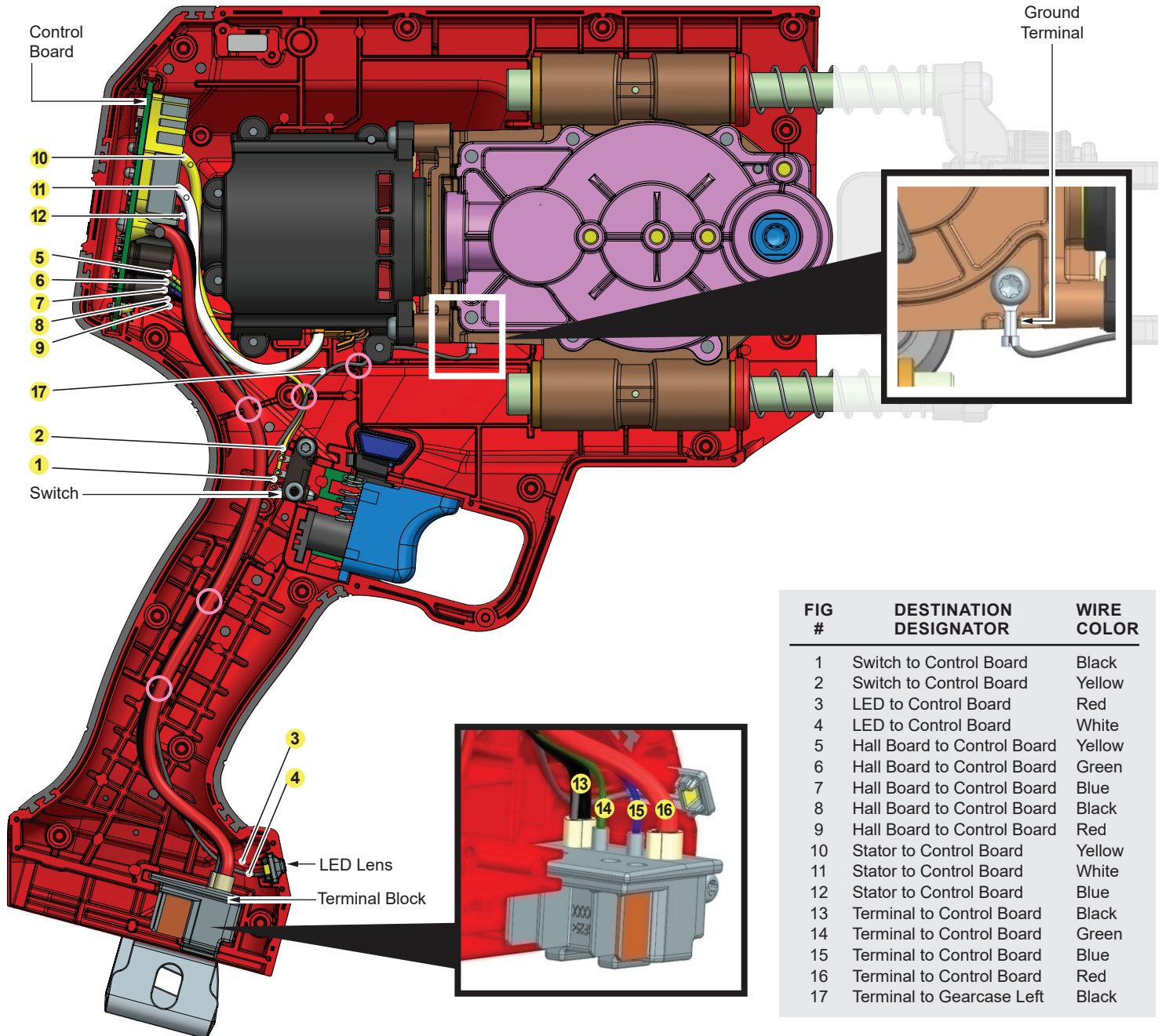
NOTE: When servicing, remove 90-95% of the existing grease prior to installing Type "J". Original grease may be similar in color but not compatible with "J".

Use a brush to paint 0.2 ± 0.1 g of Grease on the half of the Guide Pin (#9g) as shown.



Apply 0.5 ± 0.2 g of Grease on the Dust Felt (#9f)

WIRING INSTRUCTIONS



| FIG # | DESTINATION DESIGNATOR | WIRE COLOR |
|-------|-----------------------------|------------|
| 1 | Switch to Control Board | Black |
| 2 | Switch to Control Board | Yellow |
| 3 | LED to Control Board | Red |
| 4 | LED to Control Board | White |
| 5 | Hall Board to Control Board | Yellow |
| 6 | Hall Board to Control Board | Green |
| 7 | Hall Board to Control Board | Blue |
| 8 | Hall Board to Control Board | Black |
| 9 | Hall Board to Control Board | Red |
| 10 | Stator to Control Board | Yellow |
| 11 | Stator to Control Board | White |
| 12 | Stator to Control Board | Blue |
| 13 | Terminal to Control Board | Black |
| 14 | Terminal to Control Board | Green |
| 15 | Terminal to Control Board | Blue |
| 16 | Terminal to Control Board | Red |
| 17 | Terminal to Gearcase Left | Black |

WARNING

- Take notice of wire routing and position in wire guides and traps while dismantling tool.
- Be sure that all components of the electronics kit are seated firmly and squarely in housing recesses.
- Avoid pinched wires, be sure all wires and sleeves are pressed completely down in wire guides and traps.
- Prior to installing housing cover onto handle support, be sure that there are no interferences.
- Be sure to check for C functionality of switches and buttons after housing halves have been secured.

WIRE TRAPS are designated by pink circle