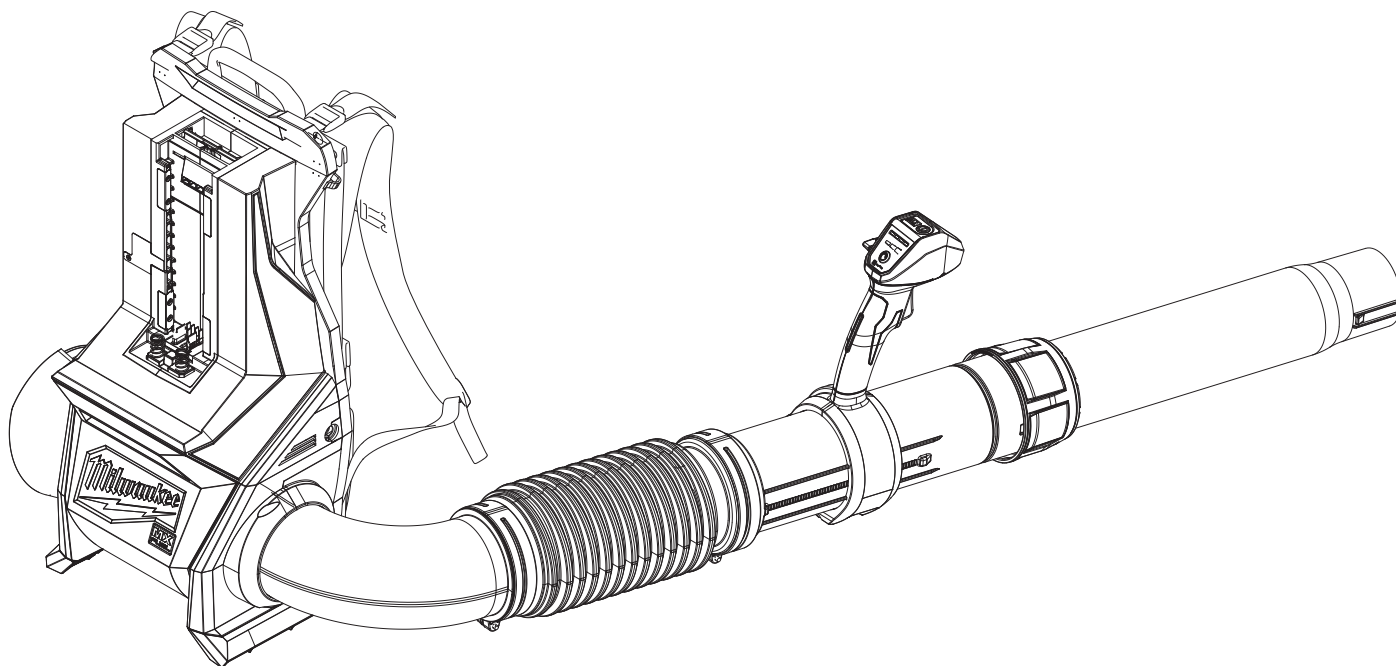




## SERVICE PARTS LIST

BULLETIN NO.  
PN0006853

SPECIFY CATALOG NO. AND SERIAL NO. WHEN ORDERING PARTS		REVISED BULLETIN	DATE
MX FUEL™ Backpack Blower			Aug. 2025
CATALOG NO. MXF600	SERIAL NO. P31A	WIRING INSTRUCTION See Pages 4-5	



Only maintenance, service, repairs, and replacements of parts as defined in the Operator's Manual can be performed by the user.

All other repairs are to **ONLY** be performed by personnel authorized by MILWAUKEE TOOL. Do not attempt to install other parts; this **COULD** void your tool warranty.

### For service, parts, or inquiries, contact us:

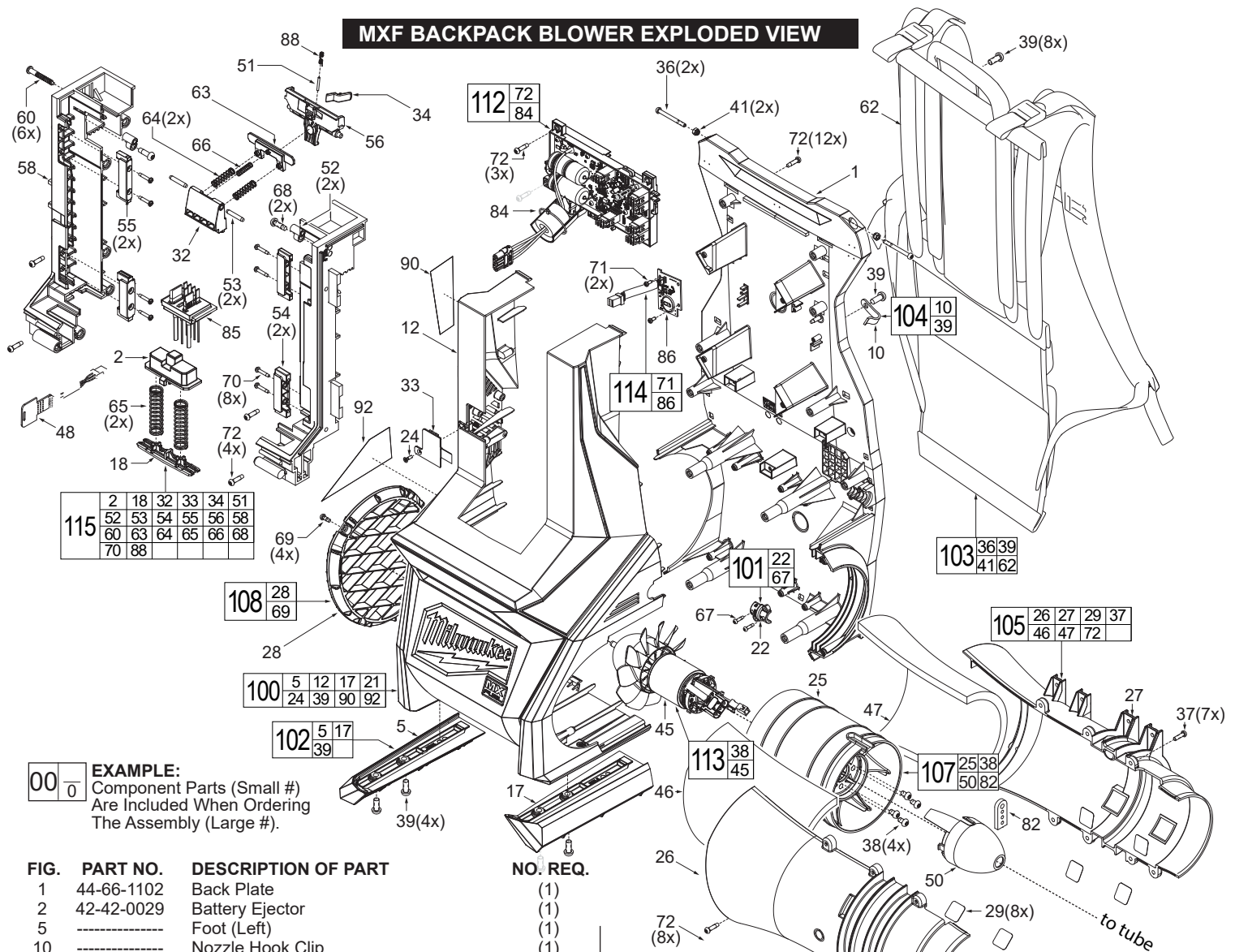
- Customer Service at 1.800.SAWDUST (1.800.729.3878)
- E-Service tool repair at: [www.milwaukeetool.com/e-service](http://www.milwaukeetool.com/e-service)
- Find a local authorized MILWAUKEE service location at [Milwaukeetool.com](http://Milwaukeetool.com)
- Find a MILWAUKEE *factory* Service Center Location or MILWAUKEE *factory* Central Repair Center at [Milwaukeetool.com](http://Milwaukeetool.com). Send the following, posted paid and insured:
  - Your name, address, and phone number
  - Description of the issues
  - Copy of the proof of purchase
  - Tool, charger, and batteries involved with the issues

### MILWAUKEE *factory* Central Repair Centers:

MILWAUKEE TOOL  
Central Repair  
1401 Sycamore Avenue  
Greenwood, MS 38930

MILWAUKEE TOOL  
Central Repair  
2198 Southtech Drive  
Greenwood, IN 46143

# MXF BACKPACK BLOWER EXPLODED VIEW



## EXAMPLE:

Component Parts (Small #)  
Are Included When Ordering  
The Assembly (Large #).

FIG.	PART NO.	DESCRIPTION OF PART	NO. REQ.
1	44-66-1102	Back Plate	(1)
2	42-42-0029	Battery Ejector	(1)
5	-----	Foot (Left)	(1)
10	-----	Nozzle Hook Clip	(1)
12	-----	Access Door	(1)
17	-----	Foot (Right)	(1)
18	44-34-0021	Ejection Spring Holder	(1)
19	43-33-0022	Elbow	(1)
21	-----	Front Cover	(1)
22	-----	Grommet Cover	(1)
24	-----	Coin Cell Door Screw	(1)
25	-----	Inlet Duct	(1)
26	-----	Inlet Muffer Cover	(1)
27	-----	Inlet Muffer Support	(1)
28	42-52-0047	Inlet Vent	(1)
29	44-52-1001	Isolating Rubber Pad	(8)
32	-----	Latch	(1)
33	-----	Power Pack Rail (Left)	(1)
34	44-10-0021	Lever Lock Out	(1)
36	05-81-0277	M4 x .7 Pan Hd. T-20 Screw	(2)
37	05-81-1221	M4 x .7 Pan Hd. T-20 Screw	(7)
38	05-78-0029	M5 x 8mm Machine Screw	(4)
39	05-81-0132	M6 x 1 Pan Hd. T-30 Screw	(13)
41	05-55-0101	Hex Nut w/Nylon Insert	(2)
43	05-74-0200	M4 x 36.5mm Screw	(1)
45	23-30-0002	Motor	(1)
46	-----	Muffer Foam A	(1)
47	-----	Muffer Foam B	(1)
48	66-82-0002	Coin Cell Board	(1)
50	31-15-0003	Outlet Cone	(1)
51	44-60-5280	Lock Off Lever Pin	(1)
52	42-40-7080	Pivot Bushing	(2)
53	06-65-7330	Pivot Shaft	(2)
54	-----	Rail Insert	(2)
55	-----	Rear Rail Insert	(2)
56	44-10-0019	Release Lever	(1)
57	-----	Retaining Ring & Foam Sub-Assembly	(1)
58	-----	Power Pack Rail (Right)	(1)
60	05-88-0002	M3 x 1.058 Pan Hd. T-10 Screw	(6)

FIG.	PART NO.	DESCRIPTION OF PART	NO. REQ.
62	23-94-0013	Harness Assembly	(1)
63	44-34-0022	Pivot Latch Spring Holder	(1)
64	40-50-0106	Spring	(2)
65	40-50-0109	Spring	(2)
66	40-50-8945	Spring	(1)
68	06-82-0029	M5 x 16mm Pan Hd. T-25 Screw	(2)
70	06-82-9630	M3 Non-Return Tamperproof Screw	(8)
71	06-82-0027	M3 x 7mm Pan Hd. T-10 Screw	(2)
72	06-82-1076	M4 x 1.41 Pan Hd. T-20 Screw	(27)
74	22-22-0023	Throttle Control Tube	(1)
76	34-40-0234	Telescoping Tube Pivot Ring	(1)
77	42-90-0038	Telescoping Tube Threaded Coupler	(1)
78	42-90-0034	Telescoping Tube Threaded Handle Adapter	(1)
82	22-90-0001	Wire Grommet	(1)
83	05-81-2005	M5 x .188 Pan Hd. T-25 Screw	(2)
84	-----	Main Control Board	(1)
85	-----	Battery Terminal	(1)
86	-----	BLE Board	(1)
88	40-50-0124	Lock-Off Lever Torsion Spring	(1)
90	10-22-2999	Caution Label	(1)
92	12-20-2686	Service Nameplate	(1)
100	14-46-1127	Front Cover Kit	(1)
101	14-46-1130	Grommet Cover Kit	(1)
102	14-46-1128	Feet Kit	(1)
103	14-46-1129	Harness Kit	(1)
104	14-46-1131	Nozzle Hook Kit	(1)
105	14-46-1130	Muffer Kit	(1)
107	14-46-1133	Inlet Duct Kit	(1)
108	14-46-1135	Muffer Grate Kit	(1)
112	14-20-0701	Power Control Board Kit	(1)
113	14-50-0006	Motor Kit	(1)
114	14-20-0702	BLE Board Assembly	(1)
115	14-46-1154	Battery Rail Assembly	(1)

# MXF BACKPACK BLOWER EXPLODED VIEW (continued)

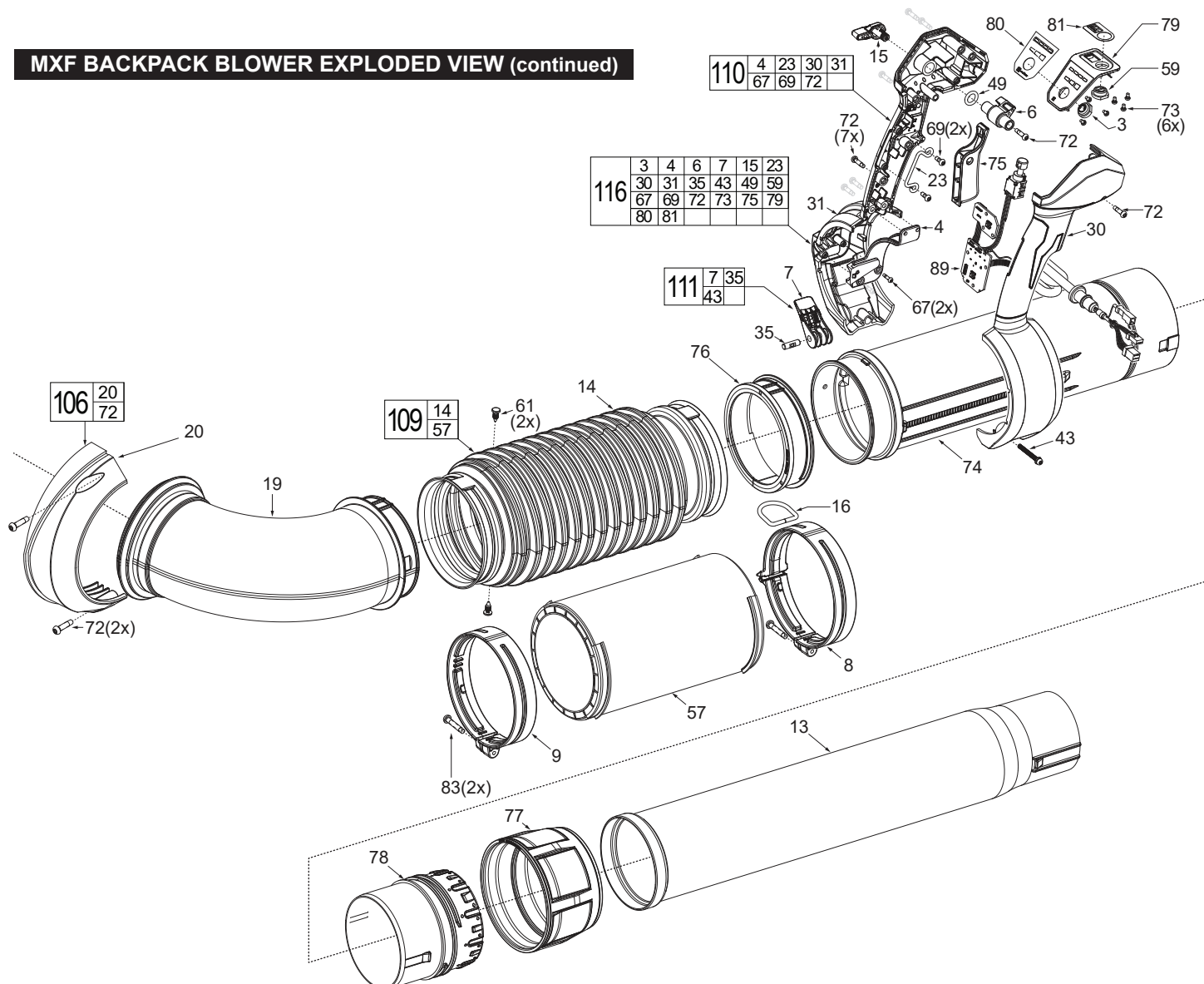


FIG.	PART NO.	DESCRIPTION OF PART	NO. REQ.
3	42-42-0005	Speed Select Button	(1)
4	42-36-0006	Power Cable Bracket	(1)
6	31-11-0001	Cam	(1)
7	31-42-0017	Handle Cam Lock	(1)
8	28-10-0104	Clamp (Large)	(1)
9	28-10-0103	Clamp (Small)	(1)
13	22-22-0024	Combined Extension Tube	(1)
14	31-01-1101	Corrugated Tube	(1)
15	23-66-0002	Cruise Control Lever	(1)
16	34-40-0233	D-Ring	(1)
20	-----	Elbow Cover	(1)
23	22-38-0101	Grounding Wire	(1)
30	-----	Joystick (Left)	(1)
31	-----	Joystick (Right)	(1)
35	31-10-0024	Lever Lock Pin	(1)
49	34-40-1003	O-Ring	(1)
59	31-15-0043	Rubber Arm Button	(1)
61	44-86-0004	Plastic Retainer	(2)
67	06-82-1080	M3 Screw	(4)
69	05-88-1220	M4 x 10mm Pan Hd. T-20 Screw	(6)
71	06-82-0027	M3 x 16mm Pan Hd. T-10 Screw	(2)
72	06-82-1076	M4 x 1.41 Pan Hd. T-20 Screw	(11)
73	06-82-0153	Ball Bearing	(1)
75	23-66-0003	PCBA Assembly	(1)
79	23-35-0001	UI Panel	(1)
80	10-05-1011	UI Label	(1)
81	10-05-1012	UI Label	(1)
89	22-80-0003	UI PCB Board	(1)
106	14-46-1132	Elbow Cover Kit	(1)
109	14-46-1136	Corrugate Kit	(1)
110	14-46-1139	Joystick Shell Kit	(1)

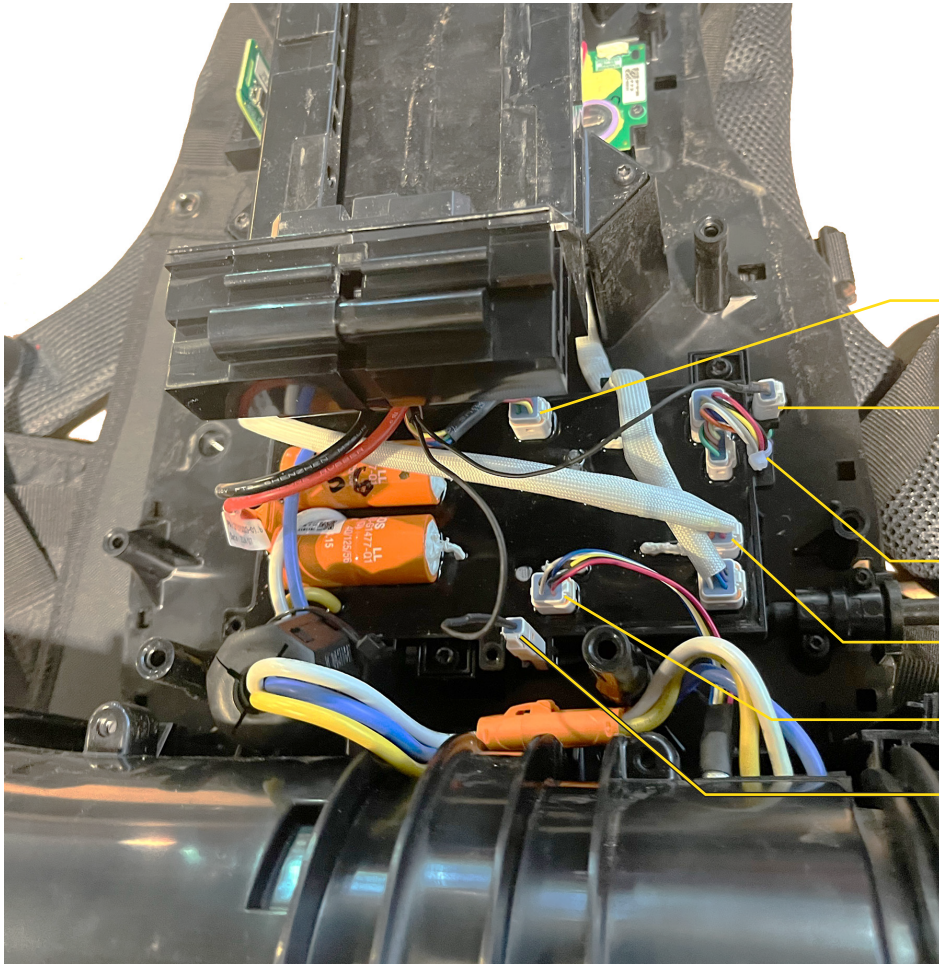
FIG.	PART NO.	DESCRIPTION OF PART	NO. REQ.
111	14-46-1138	UI Latch Kit	(1)
116	14-46-1156	Joystick Assembly	(1)

**FIG. 80,81 NOTES**  
A clean, dry surface is essential for proper performance for any adhesive system. The area intended for application of any adhesive label or nameplate must be prepared by cleaning with isopropyl alcohol. The solvent is to be applied with a clean, lint free applicator and the surface allowed to dry before applying any label or nameplate.

SCREW TORQUE SPECIFICATIONS				
FIG.	PART NO.	WHERE USED	SEAT TORQUE	
			(kgf-cm)	(lb-in)
24	-----	Coin Cell Door	3±1	3±1
36	05-81-2550	Back Plate Straps	5±0.5	4±0.4
37	05-81-1221	Muffler Halves	10±1	9±1
38	05-78-0029	Motor to Stator	20±2	17±2
39	05-81-0132	Harness/Feet	30±3	26±3
43	05-74-0200	Cam Lock	3.5±0.5	3±0.4
60	05-88-0002	Battery Rail Assy.	23±2	20±2
61	05-88-0001	Cam to Cruise Lever	8±1	7±1
67	06-82-1080	Grommet Cover	4±0.5	3±0.4
68	06-82-0029	Batt. Rail Pivot Bushings	23±2	20±2
69	05-88-1220	Grnd Wire/Muffler Grate	8±1	7±1
70	06-82-9630	Battery Rail Inserts	5±0.5	4±0.4
71	06-82-0027	BLE Board	4±0.5	3±0.4
72	06-82-1076	Handle Halves	10.3±1	8.9±1
		Back Plate	12.5±1	10.8±1
73	06-82-0153	UI	4±0.5	3±0.4
83	05-81-2005	Corrugate Tube Clamps	35±2.5	30±2.2



## MXF BACKPACK BLOWER WIRING - BACKPLATE



Plug Connector Assembly from Battery Rails into PCBA

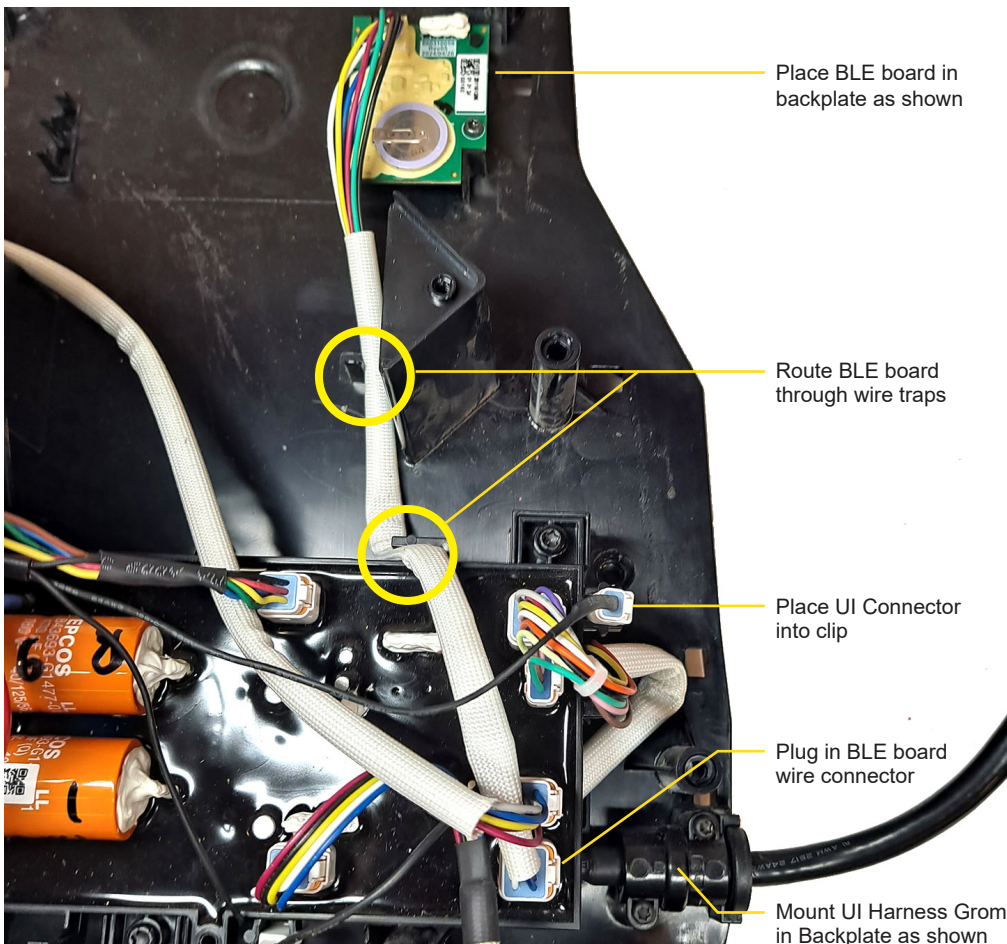
Plug one of Male Ground Connectors from Battery Rails into UI Connector attached to PCBA. Be sure connector stays seated in clip.

Slide UI wires into wire trap as shown

Plug Coin Cell Board Connector into PCBA

Plug Hall Sensor Wires Connector into PCBA

Connect Female Ground Connector from Inlet Assembly to remaining Male Ground Connector from Battery Rails and Place in Connector Clip as shown



Place BLE board in backplate as shown

Route BLE board through wire traps

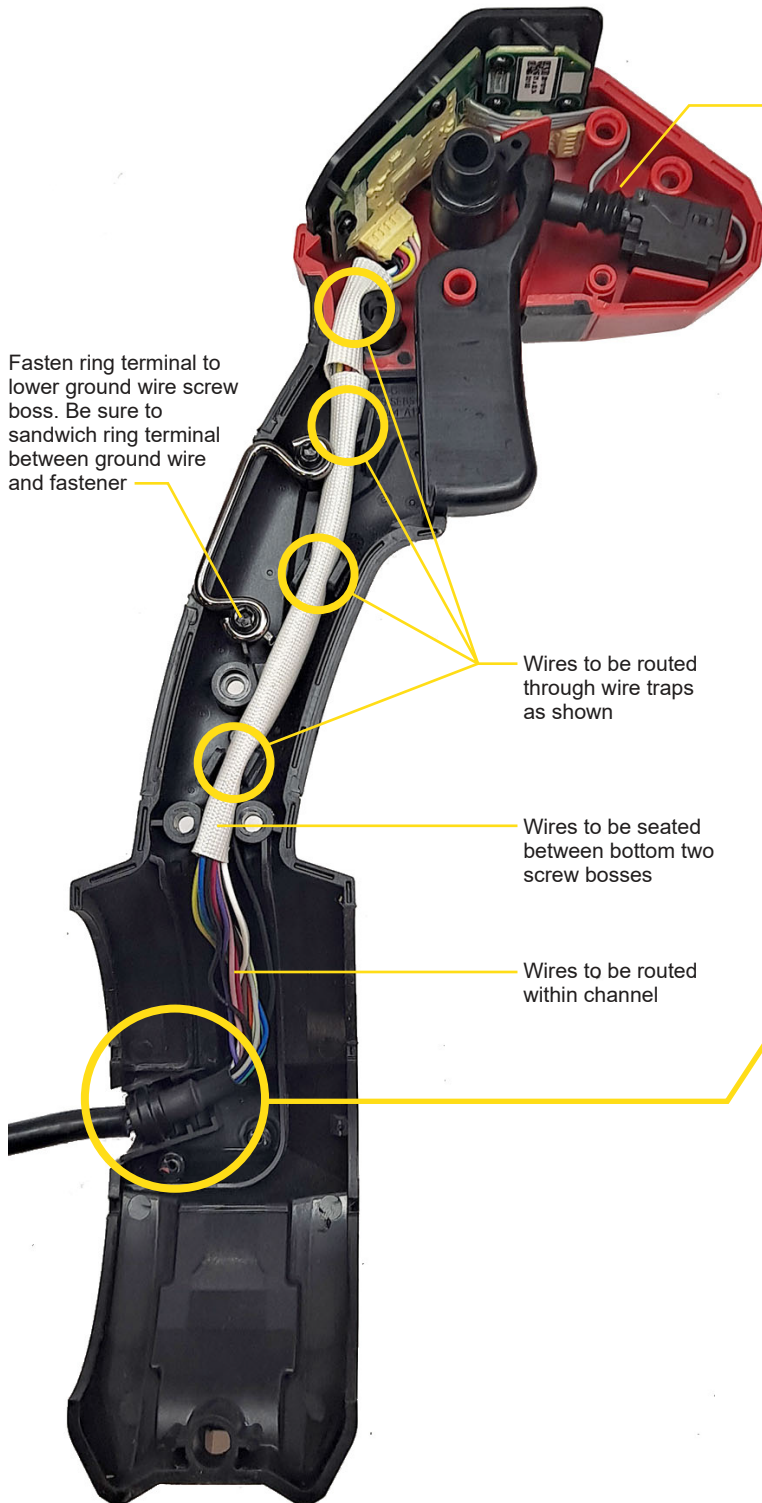
Place UI Connector into clip

Plug in BLE board wire connector

Mount UI Harness Grommet in Backplate as shown



## MXF BACKPACK BLOWER WIRING - UI & STATOR



Place switch wire above handle mounts with excess wire loop between screw bosses

Fasten ring terminal to lower ground wire screw boss. Be sure to sandwich ring terminal between ground wire and fastener

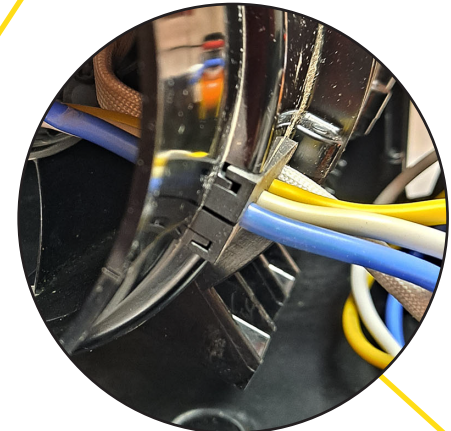
Wires to be routed through wire traps as shown

Wires to be seated between bottom two screw bosses

Wires to be routed within channel



Grommet to be seated in location shown



Grommet to be fully seated in stator ribs  
Make sure there is 4cm of wire exposed past grommet

Slide motor wires through large slot in stator

Excess wire looped inside of exit cone

