



SERVICE PARTS LIST

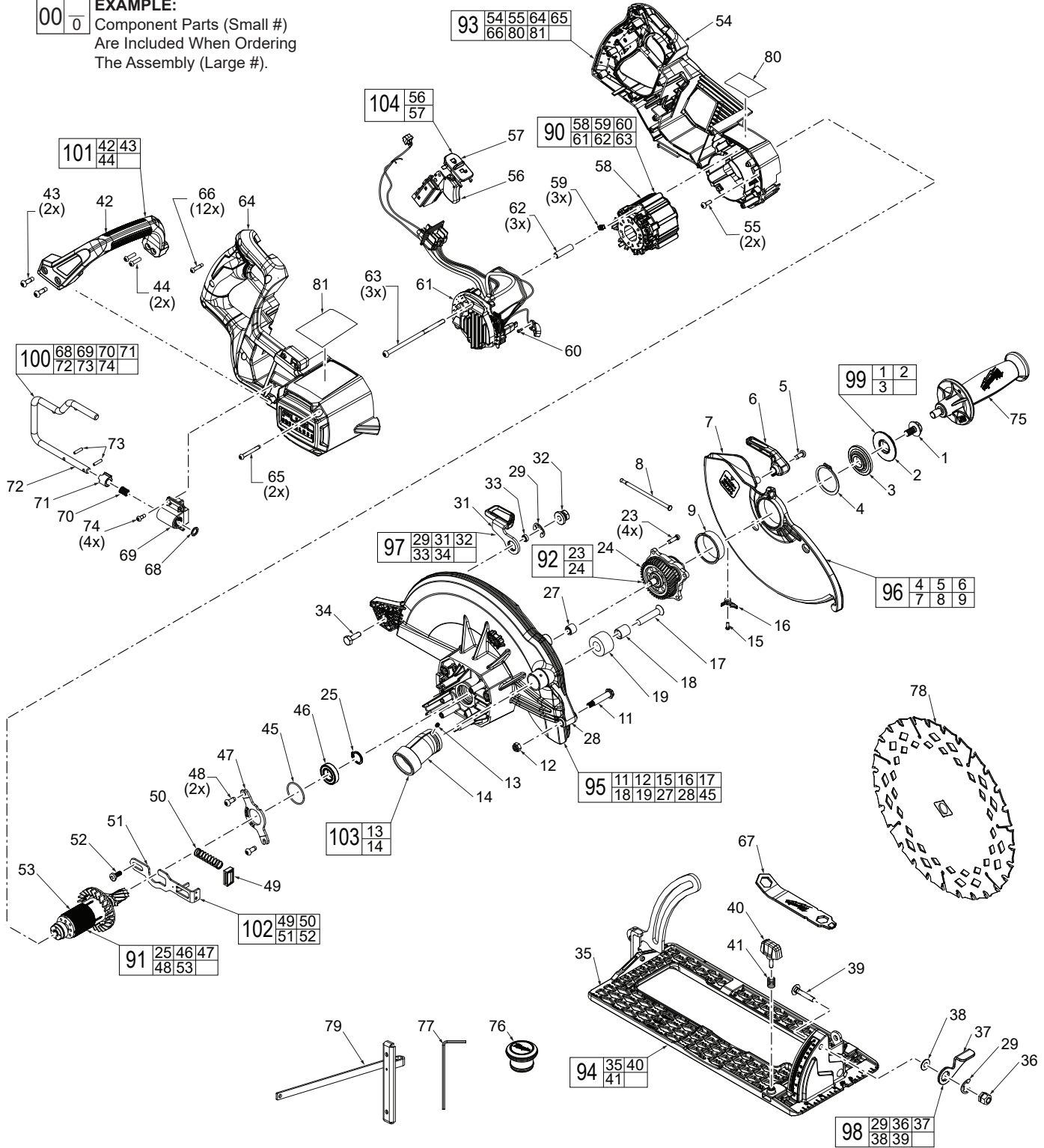
BULLETIN NO.
PN0008141

SPECIFY CATALOG NO. AND SERIAL NO. WHEN ORDERING PARTS		REVISED BULLETIN	DATE
M18 FUEL™ 10-1/4" Circular Saw			May 2026
CATALOG NO. 3026-20	SERIAL NO. R48A	WIRING INSTRUCTION See Pages 5 - 6	
NAMEPLATE SPECIFICATIONS: INPUT: 18 V \approx n_0 3 250 min ⁻¹ (RPM)			

EXAMPLE:

00	0
----	---

 Component Parts (Small #)
 Are Included When Ordering
 The Assembly (Large #).



BILL OF MATERIAL

FIG.	PART NO.	DESCRIPTION OF PART	NO. REQ.
1	06-75-1010	#5/16-18 x 15mm CH Hex Screw	(1)
2	-----	Outer Blade Flange	(1)
3	-----	Inner Blade Flange	(1)
4	34-60-0860	Retaining Ring	(1)
5	06-82-5314	#10-24 x 1/2" PH T-25 Taptite Screw	(1)
6	28-41-0000	Lower Guard Lever	(1)
7	-----	Lower Guard	(1)
8	40-50-7753	Bugle Spring	(1)
9	42-38-0028	Sleeve Ring	(1)
11	06-14-0036	Pivot Shoulder Bolt	(1)
12	06-04-8412	M6 x 6mm Hex Nut	(1)
13	05-74-0143	M4 Set Screw	(1)
14	-----	Dust Collection Outlet Nozzle	(1)
15	05-81-0015	M3 x 8.5mm PH T-10 Machine Screw	(1)
16	-----	Dust Clogging	(1)
17	-----	M8 x 40mm FH T-30 Machine Screw	(1)
18	-----	Sleeve	(1)
19	42-38-0225	Rubber Bumper	(1)
23	06-82-0189	#8-32 x 16mm PH T-15 Taptite Screw	(4)
24	-----	Output Hub	(1)
25	-----	Snap Ring	(2)
27	-----	Needle Bearing	(1)
28	-----	Upper Guard Gearcase	(1)
29	-----	Bowed E-ring	(2)
31	-----	Depth Adjust Level	(1)
32	-----	Depth Lever Nut	(1)
33	-----	Bushing	(1)
34	05-85-0056	M6 x 19mm Hex Head Machine Screw	(1)
35	-----	Shoe Assembly	(1)
36	-----	M6 Hex Nut	(1)
37	-----	Bevel Lever	(1)
38	-----	16mm Washer	(1)
39	06-10-0025	M6 x 33mm Bevel Machine Screw	(1)
40	43-30-5581	Rip Fence Knob	(1)
41	40-50-0650	Spring	(1)
42	-----	Secondary Handle	(1)
43	05-74-0986	M4 x 15mm Cap Hd. T-20 Screw	(2)
44	06-82-0029	M5 x 16mm PH T-25 ST Screw	(2)
45	02-02-0137	O-ring	(1)
46	-----	Ball Bearing	(1)
47	-----	Retaining Plate	(1)
48	05-74-1030	M5 x 12mm PH T-25 Taptite Screw	(2)
49	-----	Spindle Lock Lever Cover	(1)
50	-----	Spindle Lock Spring	(1)
51	-----	Spindle Lock Plate	(1)
52	45-04-1224	M5 x 10mm Binding Head T-25 Screw	(1)
53	-----	Rotor Assembly	(1)
54	-----	Handle Support	(1)
55	-----	M4 x 12mm PH T-20 Machine Screw	(2)
56	23-66-0116	Switch	(1)
57	-----	Trigger Lock Slider	(1)
58	-----	Stator	(1)
59	-----	Isolator	(3)
60	05-88-0015	M2.3 x 7mm CH T-8 ST Screw	(1)
61	-----	PCBA Assembly	(1)
62	-----	Heat Sink Spacer	(3)
63	05-74-0910	M5 x 108mm PH T-25 Machine Screw	(3)
64	-----	Handle Cover	(1)
65	-----	M4 x 32mm CH T-20 CH Taptite Screw	(2)
66	06-82-7470	6-19 x 17.5mm Pan Hd. ST T-15 Screw	(12)
67	49-96-0190	Wrench	(1)
68	-----	Flat Washer	(1)
69	-----	Rafter Hook Base Plate	(1)
70	-----	Detent Spring	(1)
71	-----	Detent Sleeve	(1)
72	-----	Rafter Hook	(1)
73	-----	Spring Pin	(2)
74	05-88-1220	M4 x 10mm PH T-20 ST Screw	(4)

FIG.	PART NO.	DESCRIPTION OF PART	NO. REQ.
75	31-44-0345	Side Handle (Accessory)	(1)
76	06-67-4624	Dust Port Rubber Plug (Accessory)	(1)
77	45-96-6334	M2 Hex Wrench (Accessory)	(1)
78	48-40-1048	10.25" Blade (Accessory)	(1)
79	49-22-1005	Rip Fence (Accessory)	(1)
80	12-20-0473	Service Nameplate	(1)
81	10-22-3009	Warning Label	(1)
90	14-20-0424	PCBA and Stator Assembly	(1)
91	23-40-0000	Rotor Assembly	(1)
92	06-82-0183	Hub Assembly	(1)
93	31-44-0229	Handle Kit	(1)
94	26-06-0000	Shoe Assembly	(1)
95	26-41-0000	Upper Guard Assembly	(1)
96	25-41-0000	Lower Guard Kit	(1)
97	45-16-0000	Depth Adjustment Kit	(1)
98	14-46-0602	Bevel Adjustment Kit	(1)
99	14-46-0603	Blade Bolt and Flange Kit	(1)
100	14-36-0005	Rafter Hook Assembly	(1)
101	14-34-0004	Secondary Handle Kit	(1)
102	14-73-0000	Spindle Lock Kit	(1)
103	48-09-0000	Dust Collection Outlet Kit	(1)
104	31-89-0000	Switch Kit	(1)

FIG. NOTES

80, 81 A clean, dry surface is essential for proper performance for any adhesive system. The area intended for application of any adhesive label or nameplate must be prepared by cleaning with isopropyl alcohol. The solvent is to be applied with a clean, lint free applicator and the surface allowed to dry before applying the label or nameplate.

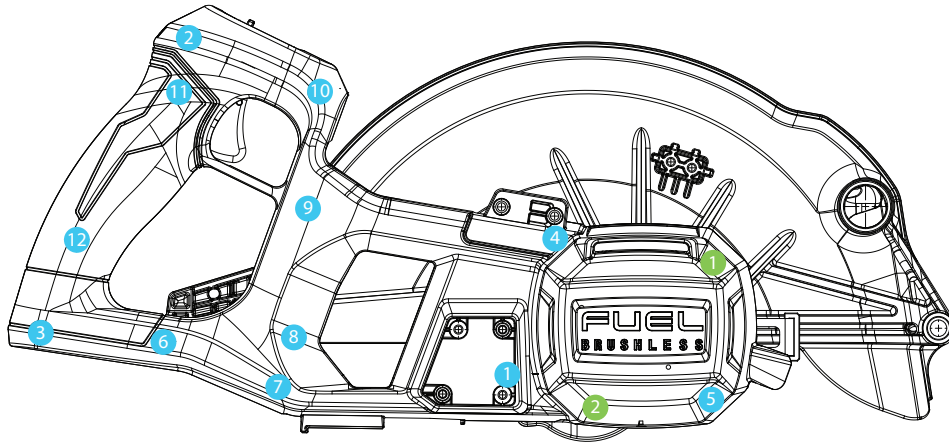
SCREW TORQUE SPECIFICATIONS

FIG.	PART NO.	WHERE USED	SEAT TORQUE	
			kgf-cm	lb-in
1	06-75-1010	Blade Flange	10±1	18±1
5	06-82-5314	Lower Guard Lever	35±4	8±1
11	06-14-0036	Upper Guard Gearcase	22±2	8±1
13	05-74-0143	Dust Collection Outlet Nozzle	4.5±0.5 Turns	
15	05-81-0015	Dust Clogging	10±1	8±1
17	-----	Sleeve	35±3	8±1
23	06-82-0189	Output Hub	22±2	8±1
32	-----	Depth Adjust Level	40±4	8±1
36	-----	Bevel Lever	22±2	8±1
43	05-74-0986	Secondary Handle	9±1	8±1
44	06-82-0029	Secondary Handle	22±2	8±1
48	05-74-1030	Retaining Plate	30±3	8±1
52	45-04-1224	Spindle Lock Plate	21±2	8±1
55	-----	Handle Support	10±1	8±1
56	23-66-0116	Switch	10±1	8±1
60	05-88-0015	PCBA	2.3±0.3	8±1
63	05-74-0910	Stator	182±2	8±1
65	-----	Handle Cover	16±1.5	8±1
66	06-82-7470	Handle Cover	16±1.5	8±1
74	05-88-1220	Rafter Hook Base Plate	11±1	8±1

FASTENER ORDER

● = Fig. 66

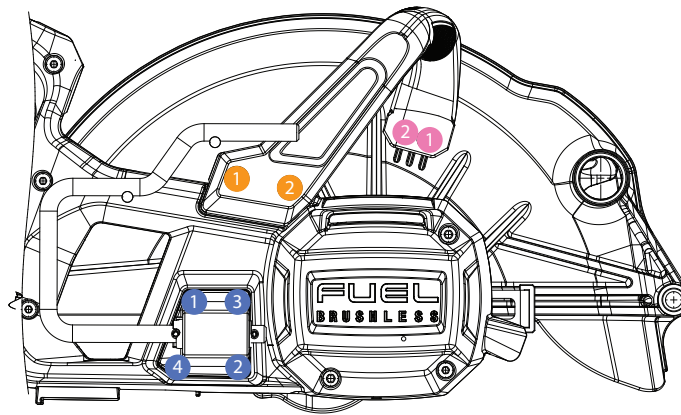
● = Fig. 65



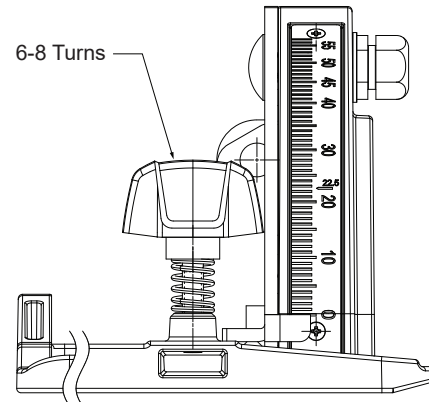
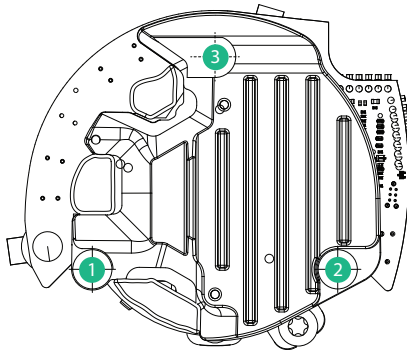
● = Fig. 43

● = Fig. 44

● = Fig. 74



● = Fig. 63



LUBRICATION INSTRUCTIONS

● 277 Red Loctite® No. 44-22-0050

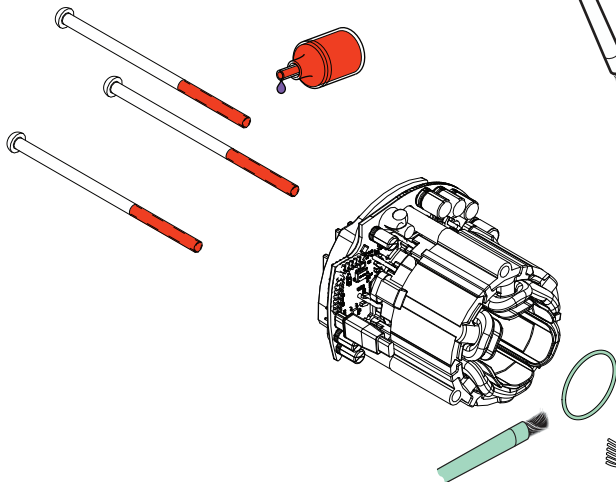
● Type 'J' Grease, No.49-08-4220

NOTE

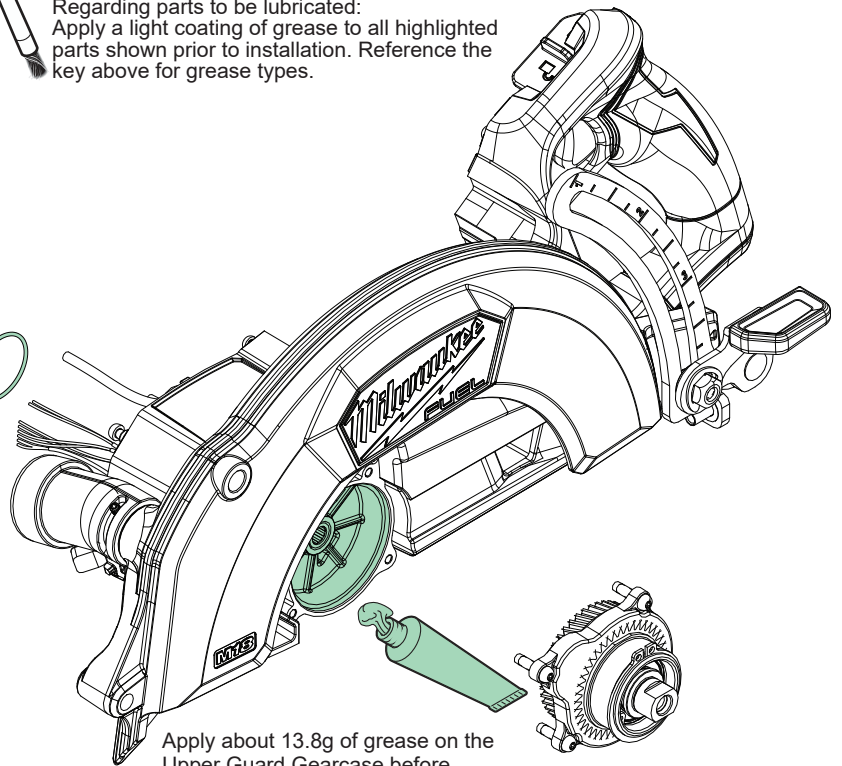
Regarding parts to receive thread locking sealant:
Place one to two drops of the recommended Loctite® thread locking sealant (or the equivalent) to the threads of parts shown prior to installation.

NOTE

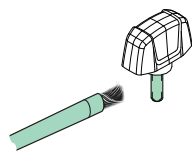
Regarding parts to be lubricated:
Apply a light coating of grease to all highlighted parts shown prior to installation. Reference the key above for grease types.



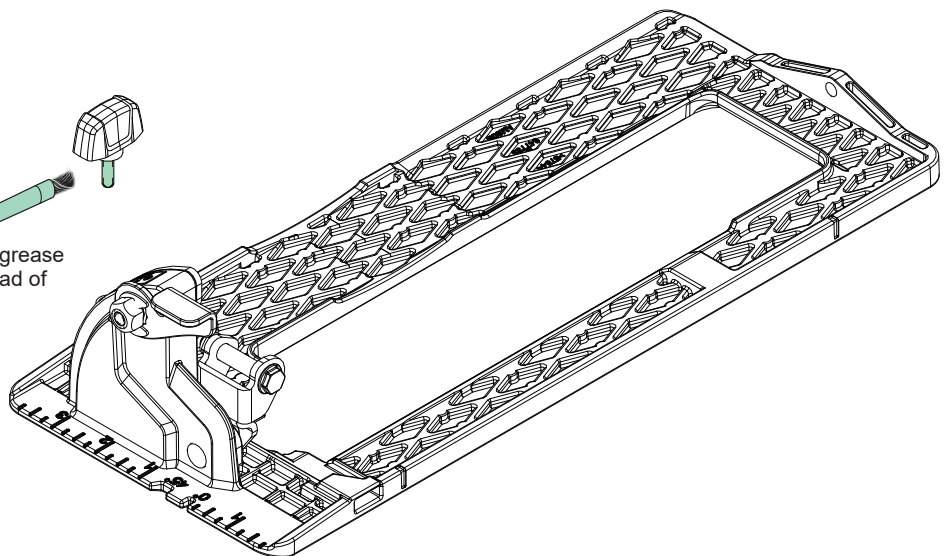
Brush a light coating of grease (about 0.05g) on the surface of the O-Ring.



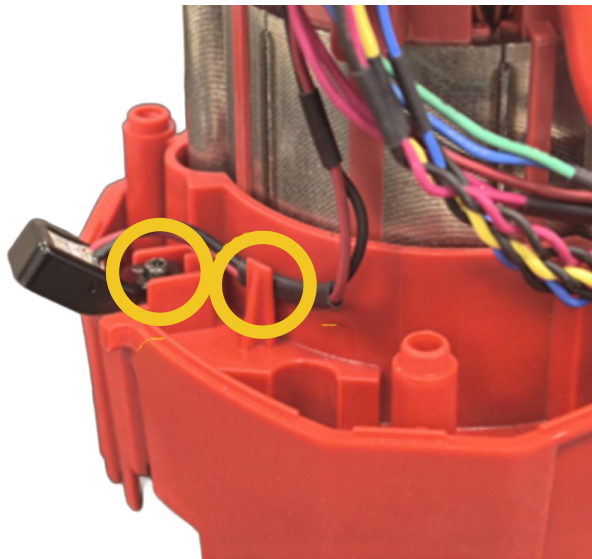
Apply about 13.8g of grease on the Upper Guard Gearcase before assembling the Output Shaft Assembly.



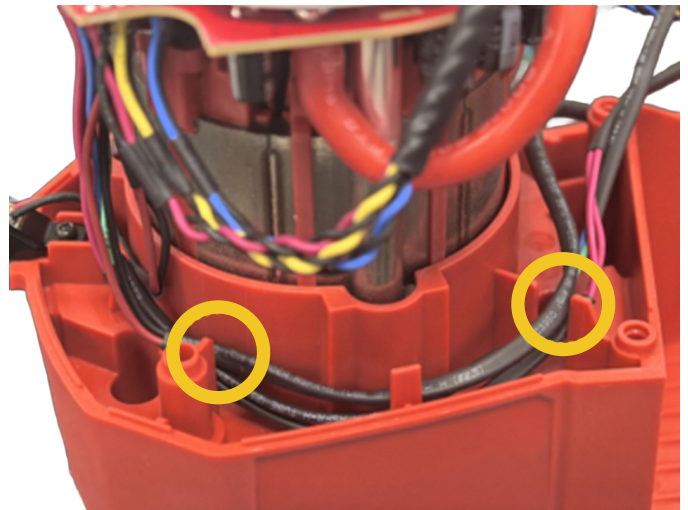
Brush a light coating of grease (about 0.2g) on the thread of the Rip Fence Knob.



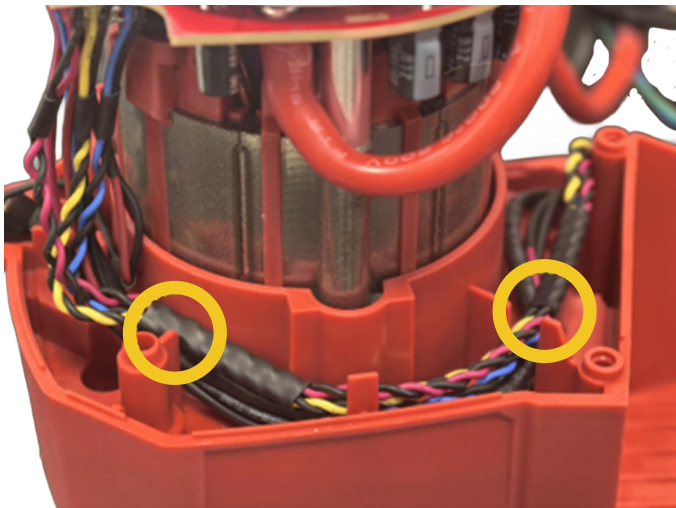
WIRING INSTRUCTIONS



- 1) Place LED into the slot and install screw.
- 2) Place LED Wire into the wiretrap.



- 3) Place Switch Wire (Red/Red) into the wiretraps.
- 4) Place Terminal Wire (Blue/Green) into the wiretraps.
- 5) Place Autostop Wire (Black/Red) into the wiretraps.



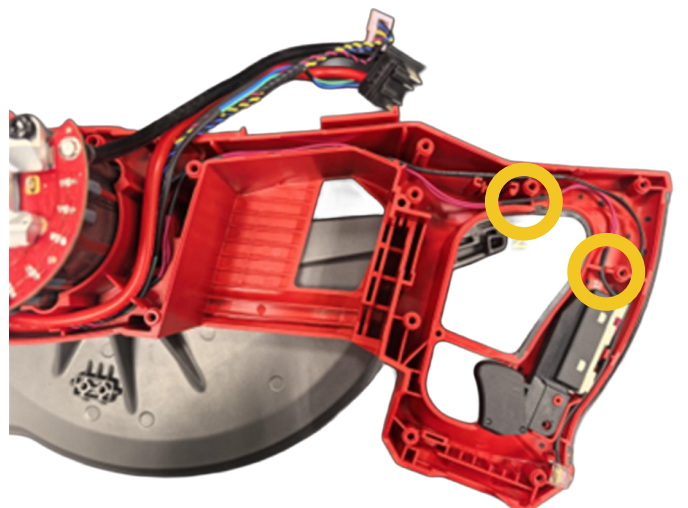
- 6) Place IMU Daughter Board Wires into the wiretraps.



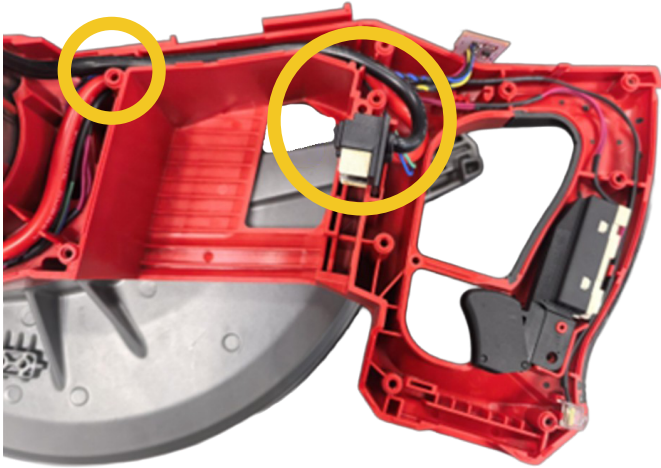
- 7) Place Red Wire into the wiretraps.



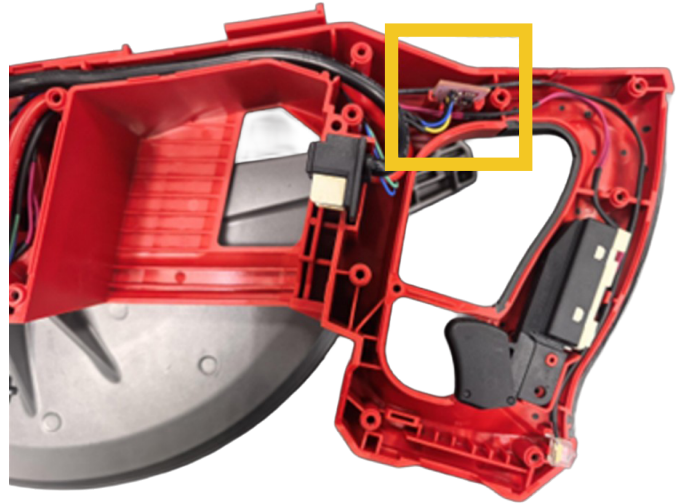
- 8) Place LED Wires into the wiretraps.



- 9) Place Switch Wires into the wiretraps.



10) Place Red Wire and Black Wire into the guide and wiretraps.



11) Place IMU Daughter Board into the slot.



Take notice of wire routing and position in wire guides and traps while dismantling tool.

Be sure that all components of the electronics kit are seated firmly and squarely in housing recesses.

Avoid pinched wires, be sure all wires and sleeves are pressed completely down in wire guides and traps.

Prior to installing housing cover onto handle support, be sure that there are no interferences.

Be sure to check for functionality of switches and buttons after housing halves have been secured.