

TO INFORM YOU

PRODUCT SUPPORT BULLETIN # 254 Revised

TO: AUTHORIZED *Portable Electric Tool* SERVICE STATIONS
BRANCH OFFICE/SERVICE CENTERS
BRANCH/SERVICE CENTER MANAGERS
REGIONAL MANAGERS
DISTRICT MANAGERS

DATE SEPTEMBER, 1993

FROM: Corbert A. Garb - National Service Manager

TOOL(S)\PRODUCT(S) AFFECTED:

6140 4-1/2" SANDER/GRINDER
SERIAL NUMBER RANGE 762-225408 thru 762-233406
6145 4-1/2" SANDER/GRINDER
SERIAL NUMBER RANGE 627-418057 thru 627-419390

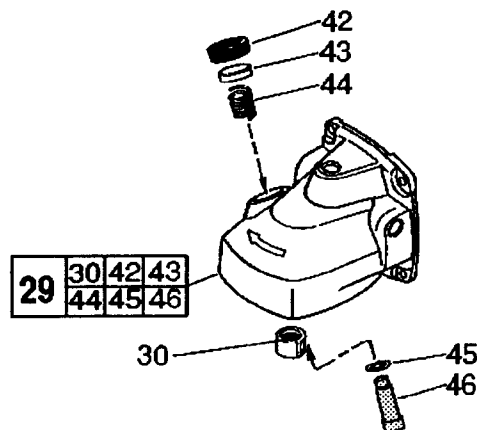
SUBJECT: DEFECTIVE SPINDLE LOCK MECHANISM

14-30-0301 GEAR CASE ASSEMBLY

LIST PRICE \$14.40

FIG.	PART NO.	DESCRIPTION OF PART	NO. REQ.	LIST PRICE
29	14-30-0301 *	Gear Case Assembly	1	14.40
30	02-50-2423	Needle Bearing	1	.85
42	31-12-0265	Cap	1	.35
43	42-42-0075	Lock Button	1	.35
44	40-50-1300	Coil Spring	1	.50
45	34-40-4300	O-ring	1	.25
46	44-60-1370	Lock Pin	1	2.75

* COMPONENT PARTS (SMALL#) ARE INCLUDED WHEN ORDERING THE ASSEMBLY (LARGE#)



A POTENTIAL PROBLEM WITH THE GEAR CASE ASSEMBLY'S' SPINDLE LOCK MECHANISM NOT PROPERLY ENGAGING WITH THE SLOTS OF THE TOOL'S SPIRAL BEVEL GEAR (32-05-2230), EXISTS IN 6140 and 6145 4-1/2" SANDER/GRINDERS WITHIN SERIAL NUMBER RANGES LISTED ABOVE.

TO CORRECT THE PROBLEM THE GEAR CASE ASSEMBLY 14-30-0301 MUST BE CHANGED, AS THE COUNTER BORE FOR THE SPINDLE LOCK MECHANISM HAS BEEN REVISED.

This bulletin is for informational purposes. PLEASE NOTE ON SERVICE PARTS LIST 54-38-3506 & -3553.