



## TO INFORM YOU

PRODUCT  
SUPPORT  
BULLETIN # 197

**TO:** Authorized Service Stations  
Branch Office/Service Centers  
Branch/Service Center Managers  
Regional Managers  
District Sales Managers

**DATE** July, 1989

**FROM:** Corbert A. Garb - National Service Manager

**TOOL(S)/PRODUCT(S) AFFECTED:**

6140 4-1/2" Sander/Grinder	Serial # 762-6472 thru 762-19796
6141 5" Sander/Grinder	Serial # 763-2001 thru 763-9720
6145 4-1/2" Sander/Grinder	Serial # 627-264027 thru 627-306417

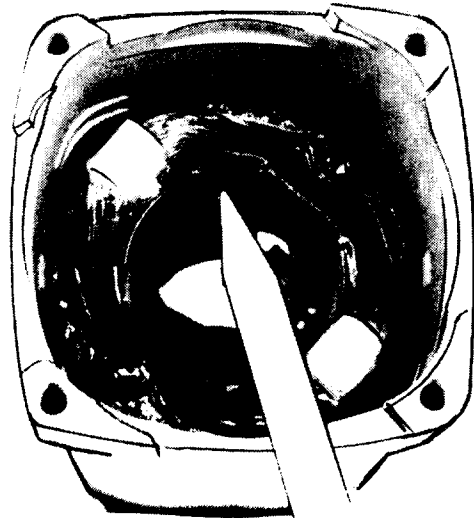
**SUBJECT:** Armature & Field Burnout  
31-50-0425 Motor Housing

The problem of complete burnout of the armature and field, after a very brief time in actual use, generally occurs because of overload\abuse of the tool.

However, the problem may be the fit between the gear case and motor housing. An oversize motor housing gear case mounting area can exist, (*in the serial numbers ranges listed*) causing the fit between the gear case and motor housing to be loose; in turn allowing the armature to rub on the field and possible armature \ field burnout.

To determine a defective from non-defective 31-50-0425 motor housing, inspect the condition of the field laminations. If gear case mounting screws are tight and the field laminations show rub marks which are isolated to the upper portion of the laminations (see illustration), the motor housing should be considered defective and replaced at no-charge.

If the field laminations show rubbing through-out, the possible cause is either gear case or field mounting screws that loosened up and the motor housing should not be considered defective.



This bulletin is for informational purposes; please note on Service Parts Lists 54-38-0253, -3503 and -3550

MILWAUKEE ELECTRIC TOOL CORPORATION  
13135 W. LISBON RD., BROOKFIELD, WIS. 53005  
(414) 781-3600