



TO INFORM YOU

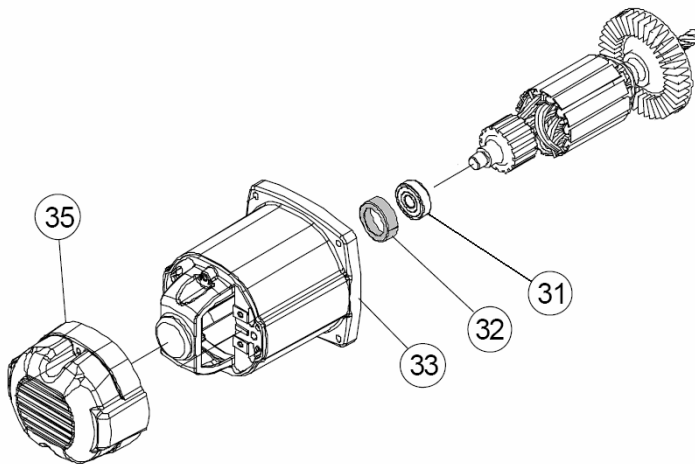
**PRODUCT  
SUPPORT  
BULLETIN # 428**

TO: AUTHORIZED *portable electric tool* SERVICE STATIONS  
*factory* SERVICE / SALES SUPPORT BRANCH  
SALES COMPANIES

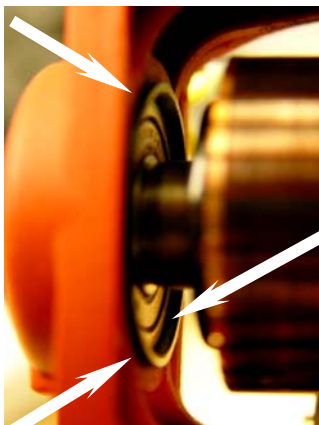
DATE: January 2005

TOOL(S) \ PRODUCT(S) AFFECTED: 6180-20 14" Premium (Abrasive) Cut-Off Machine  
6190-20 14" Dry Cut-Off Machine

**SUBJECT: 42-96-0020 Rubber (Bearing) Cup Installation**



- **Install 42-96-0020 Rubber Cup** [fig. 32] **into Motor Housing** [fig. 33] **before** assembling motor housing / field coil / fan (baffle) guide onto armature and gear housing of the cut-off machine.
- Check to insure rear armature ball bearing is properly seated into 42-96-0020 Rubber Cup. Rubber Cup 42-96-0020 must extend beyond race of ball bearing and motor housing bearing bore – see illustration. An incorrect installation of Rubber Cup will allow it to easily work its way out of the motor housing bore.



This bulletin is for informational purposes. PLEASE NOTE ON SERVICE PARTS LIST: 54-40-0900, 54-40-0925