



TO INFORM YOU

PRODUCT
SUPPORT
BULLETIN # 463

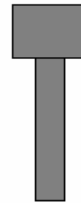
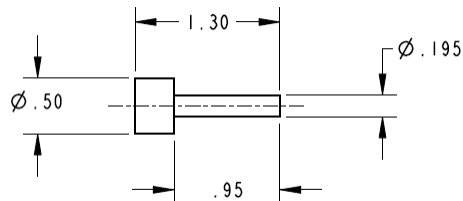
TO: AUTHORIZED *Portable Electric Tool* SERVICE STATIONS
factory SERVICE / SALES SUPPORT BRANCH CENTERS

DATE: February 2007

TOOL(S) \ PRODUCT(S) AFFECTED: 0756-20 V28™ 1" Compact SDS Rotary Hammer

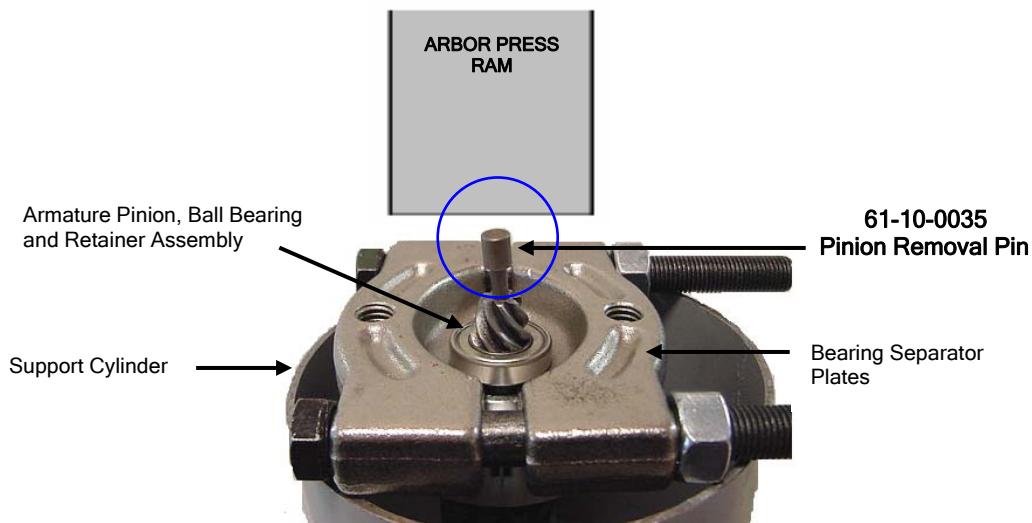
SUBJECT: 61-10-0035 Armature Pinion Gear Removal Pin

Net \$ 9.00



Pinion Removal Pin

Pinion Removal Pin service fixture designed to help in removing / pressing the pinion / ball bearing assembly from the 16-07-0210 armature assembly of a 0756-20 V28™ 1" Compact Cordless SDS+ Rotary Hammer



WARNING! SAFETY FIRST!

Always wear safety glasses when using Pinion Removal Pin for pressing and removing armature pinion & ball bearing.

This bulletin is for informational purposes. PLEASE NOTE ON SERVICE PARTS LIST: 54-24-7020