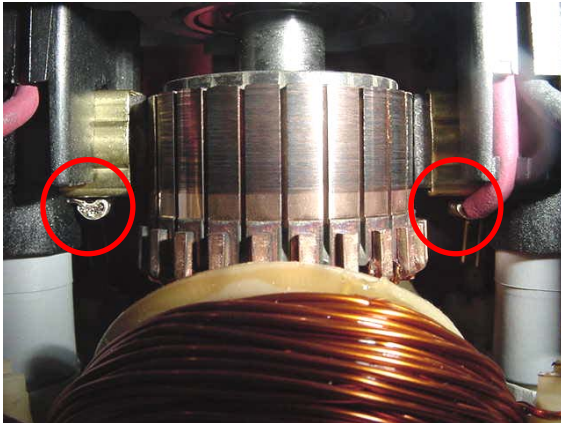


TO: AUTHORIZED *portable electric tool* SERVICE STATIONS
factory SERVICE CENTERS

DATE: July, 2010

TOOL(S) \ PRODUCT(S) AFFECTED: 4270-20 COMPACT ELECTROMAGNETIC DRILL PRESS

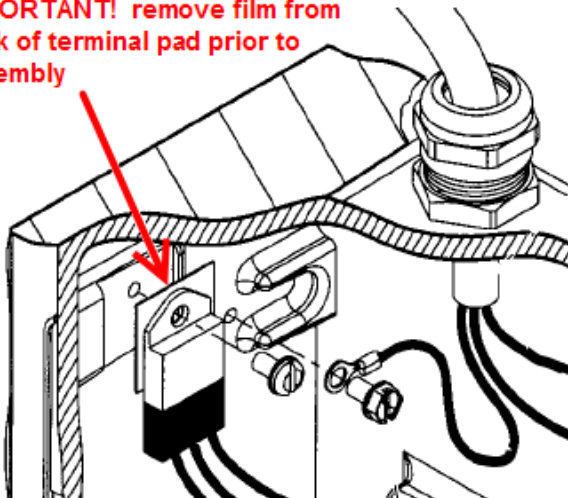
SUBJECT: *complaint that 4270-20 is not working or working only intermittently...*



- Check for loose Flag terminals at the brush holder (s); **if**, loose push terminal all the way down beside brass brush tube and solder into place

A, flag terminal not inserted fully in a brush tube can causing a loose connection which in-turn may cause the tool to run intermittently and can also allow arcing and burning between brush tube and terminal. In rare occurrences terminals can drop down against Commutator causing an open in the Commutator bars.

IMPORTANT! remove film from back of terminal pad prior to assembly



- Next, check for removal of the plastic film from the heat sink... remove Clear Film from Heat Sink found on Control Panel Assembly 23-35-0360 - if clear film is not removed from the back of the terminal pad / heat sink it will not dissipate heat away from the PCB affecting the holding pressure of the stand and can cause motor operation problems

- Next, check OHM RESISTANCE of magnet; resistance should be between **335Ω** and **355Ω** - if above 355 Ohm's change out / replace the magnet...

- Next, if flag terminals are tight; if plastic film has been removed from heat sink; if ohms resistance of magnet are within 335 Ω/355 Ω specified range; **change out the Complete Control Panel Assembly 23-35-0360**

This bulletin is for informational purposes. PLEASE NOTE ON SERVICE PARTS LIST: 54-46-0400