



TO INFORM YOU

**PRODUCT
SUPPORT
BULLETIN # 340**

TO: AUTHORIZED *Portable Electric Tool* SERVICE STATIONS
BRANCH OFFICE SERVICE CENTERS
SALES COMPANIES

DATE: DECEMBER, 1999

FROM: Corbert A. Garb - National Service Manager

TOOL(S) \ PRODUCT(S) AFFECTED

6701-22 *extended reach* Sharp-Fire™ Screw-Shooter System

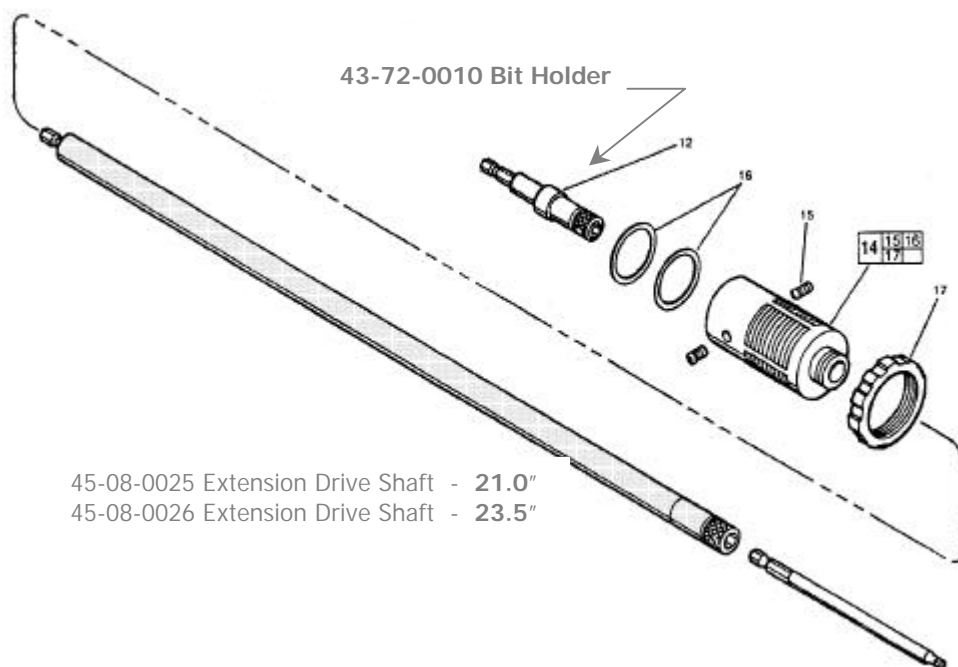
6701-23 *extended reach* Sharp-Fire™ Screw-Shooter System

SUBJECT: 45-08-0025 [21.0"] Extension Drive Shaft

45-08-0025 Extension Drive Shaft is obsolete – replaced by 45-08-0026 Extension Drive Shaft. The 45-08-0025 Shaft measures **21.0"** and 45-08-0026 Shaft measures **23.5"**.

To use the longer **23.5"** 45-08-0026 Shaft in place of the **21.0"** 45-08-0025 Shaft requires removal of the 43-72-0010 Bit Holder [fig. 12] from the *extended reach* 6701-22 Sharp-Fire™ Screw-Shooter.

To remove the 43-72-0010 Bit Holder loosen the two (2) 3mm Socket Head Set Screws [fig. 15] in the 43-76-0295 Adapter Assembly and slide the Adapter off, exposing and removing the Bit Holder. The Adapter Assembly is then re-installed and the long shaft 45-08-0026 is inserted directly into the 42-66-0710 Clutch Chuck Assembly of the Screw-Shooter.



To convert an *extended reach* 6701-23 Sharp-Fire™ Screw-Shooter, using the 23.5" 45-08-0026 Extension Drive Shaft, to a standard *short configuration* 6701-21 Sharp-Fire™ Screw-Shooter — before its 'magazine attachment' can be attached, it requires installing a 43-72-0010 Bit Holder and 43-76-0295 Adapter Assembly to the nose of the Screw-Shooter. This also requires a 14-46-0905 2-Bend Belt Guide Assembly to be install to the 'magazine attachment' [see insert on Service Parts List bulletin 54-42-5855].

Please note on Service Parts List Bulletin 54-42-5800, -5850, -5851, -5855