



TO INFORM YOU

**PRODUCT
SUPPORT
BULLETIN # 356**

TO: AUTHORIZED *Portable Electric Tool* SERVICE STATIONS
factory SERVICE CENTERS
SALES COMPANIES

DATE: JANUARY, 2001

FROM: Corbert A. Garb - National Service Manager

TOOL(S) \ PRODUCT(S) AFFECTED

6101, 6105, 6101-6 BANDFILE

SUBJECT: 14-46-0975 BANDFILE Head Assembly

List Price \$67.75 USD

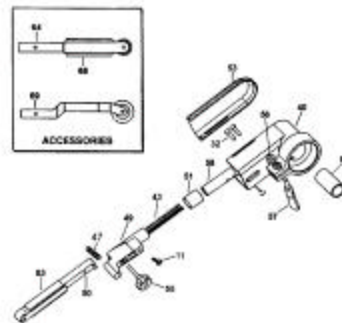
14-46-0975 BANDFILE Head Assembly is **replacing** the 28-50-0250 Housing found on the 6101 and 6105 BandFile.



14-46-0975 BANDFILE Head Assembly

Please note the Contact Arm Assembly and component parts of the 14-46-0975 BANDFILE Head Assembly are **NOT** interchangeable with original equipment Contact Arm Assemblies and components of the 6101 and 6105 BandFile.

After a 14-46-0975 BANDFILE Head Assembly is installed we recommend stamping or etching a 'C' next to the catalog number on the 6101 or 6105 BandFile nameplate. The 'C' will show that the BandFile has been converted. Knowing that a tool has the 14-46-0975 BANDFILE Head Assembly installed will help assure correct replacement parts are ordered/sent should a contact arm, et cetera need replacement at a later date.



Please refer to Service Parts List Bulletin **54-38-0828** for a complete listing of the components of the 14-46-0975 BANDFILE Head Assembly

Note! The major visual difference between an original equipment BANDFILE Head Assembly found on 6101 and 6105 BandFiles and the 14-46-0975 BANDFILE Head Assembly, is the one piece collar and clamp screw [thumbscrew] attachment of the 14-46-0975 housing to the spindle hub / gear case of the motor.

This bulletin is for informational purposes. PLEASE NOTE ON SERVICE PARTS LIST; Domestic **54-38-0825**, -0826, -0828, -0827, -0850, -0851, -0852